



**Long Range Development Plan Mt. San Antonio College  
2018 Educational and Facilities Master Plan (EFMP)  
Draft Environmental Impact Report (EIR)**

September 19, 2018 // Public Scoping Meeting



# Agenda

/ Introductions

/ Purpose of Tonight's Scoping Meeting

/ 2018 Educational and Facilities Master Plan (EFMP) Background

/ Description of EIR Proposed Project

/ Overview of Environmental Review Process

/ Public Comment Period



# Purpose of Tonight's Scoping Meeting

## California Code of Regulations

§ 15082. Notice of Preparation and Determination of Scope of EIR.

“to assist the lead agency in determining the scope and content of the environmental information that the responsible or trustee agency may require.”

*Please note that video/audio of this meeting is taking place for record purposes.*

- ❖ An opportunity to provide comments about the **type**, (content) and **extent** (scope) of environmental analyses to be undertaken in the **Environmental Impact Report (EIR)**
- ❖ Comments may include:
  - Potential environmental impacts to be addressed in the EIR
  - Alternatives to be evaluated in the EIR
- ❖ Methods for Comments:
  - Verbal (tonight at Scoping Meeting)
  - Written (see Comment sheets) – mail, email, or hand delivery
  - All comments must be received no later than **5:00 PM on October, 4, 2018**





# 2018 Educational and Facilities Master Plan (EFMP) Background

- Draft Document
- Planning Process
- Community Participation + Feedback
- Integrated Planning



## Draft EFMP Document

Planning at Mt. SAC focuses on excellence and innovation in programs, services, and facilities that promote and support student access, equity, and success.

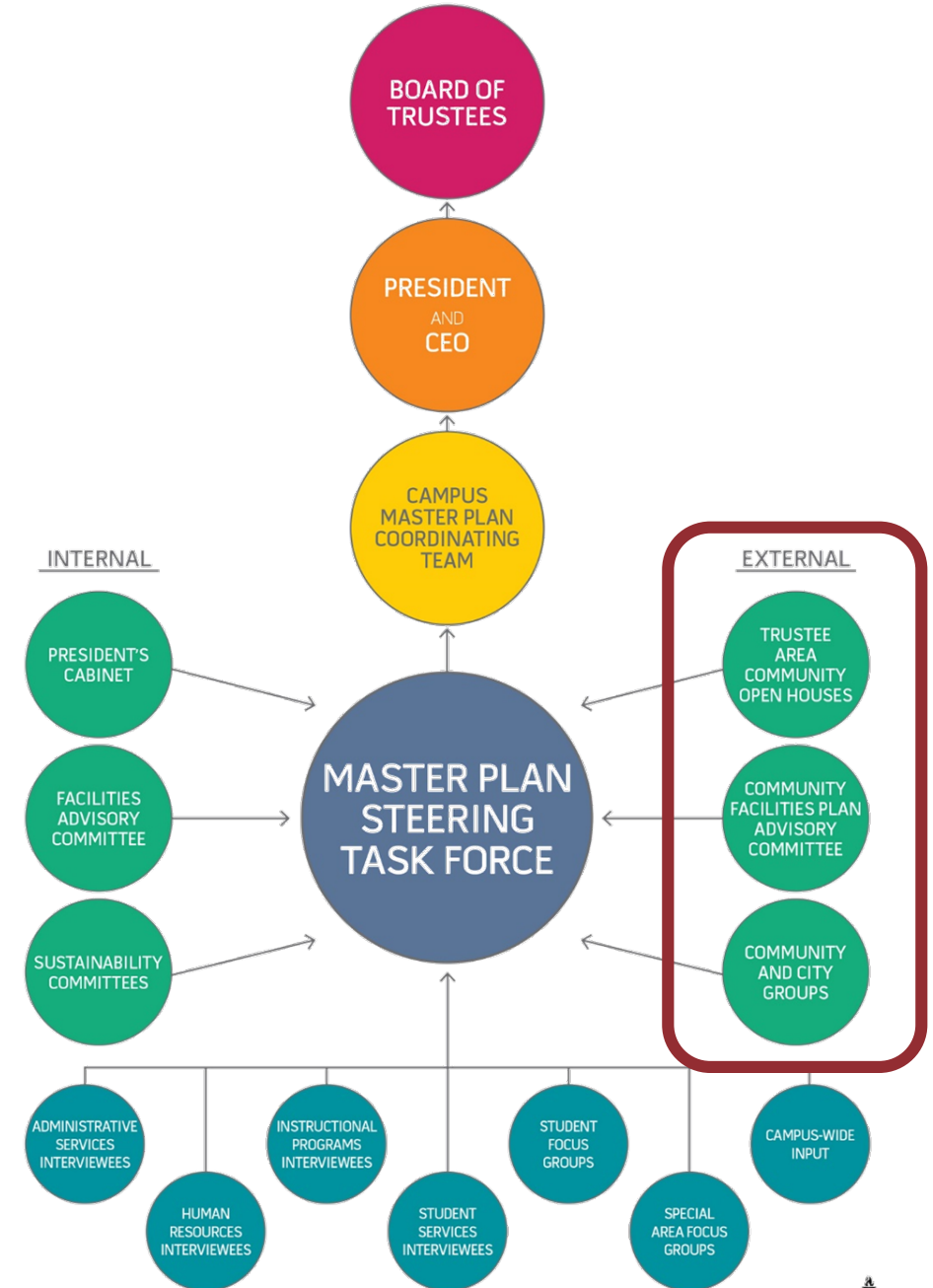
The Mt. SAC 2018 Educational and Facilities Master Plan (EFMP) is the College's long-term plan and serves as the foundation for other components of the College's integrated planning process and cycle of continuous quality improvement.

The Draft EFMP dated May 9, 2018 is available on the campus website.

[http://www.mtsac.edu/efmp/Draft  
EFMP.html](http://www.mtsac.edu/efmp/Draft_EFMP.html)

# EFMP Process

- A **broad cross-section** of campus and community stakeholders met, reviewed, and provided input to the EFMP
- The **Master Plan Steering Task Force** included faculty, staff, students, and managers
- The **Community Facilities Plan Advisory Committee** includes elected officials, civic leaders, and leaders of community based organizations
- **Six key goals** were established to guide development of the EFMP:
  1. Collaborative
  2. Comprehensive
  3. Data-driven
  4. Dynamic
  5. Inclusive
  6. Transparent



# EFMP Community Participation + Feedback

## Community Participation

- ❖ The **Community Facilities Plan Advisory Committee (CFPAC)** was created to be a conduit to the broader community for the purposes of publicizing participation opportunities and soliciting input.
- ❖ In February and March 2017, The Board of Trustees hosted a series of **nine interactive public workshops**:
  - The workshops aimed to introduce the EFMP project and encourage community feedback while informing the public about programming, resources, and all that the College has to offer its service area.
- ❖ June 2017 - **“Town/Gown” Design Charrette with the City of Walnut**

## Community Feedback

- ❖ Building Improvements
- ❖ Campus Access
- ❖ Curriculum and Programming
- ❖ Energy Efficiency
- ❖ Parking and Traffic
- ❖ Safety
- ❖ Signage and Wayfinding
- ❖ Town / Gown Integration



# Integrated Planning

## Educational Planning

- Develop and analyze **internal and external data** to identify **major needs and challenges** that currently exist or are anticipated to exist in the **next ten years**
- Project the College's **overall growth** and the growth of **programs and services** over the **next ten years**
- Provide a common **foundation** for discussion about the College's **programs and facilities**

## Facilities Planning

- Develop recommendations for **site and facilities** improvements that are **informed by educational planning**
- Provide a **foundation for other College plans**, such as the *Strategic Plan* and *Technology Plan*
- **Inform the public** of the College's intentions and **garner support** for the services provided in and to the community





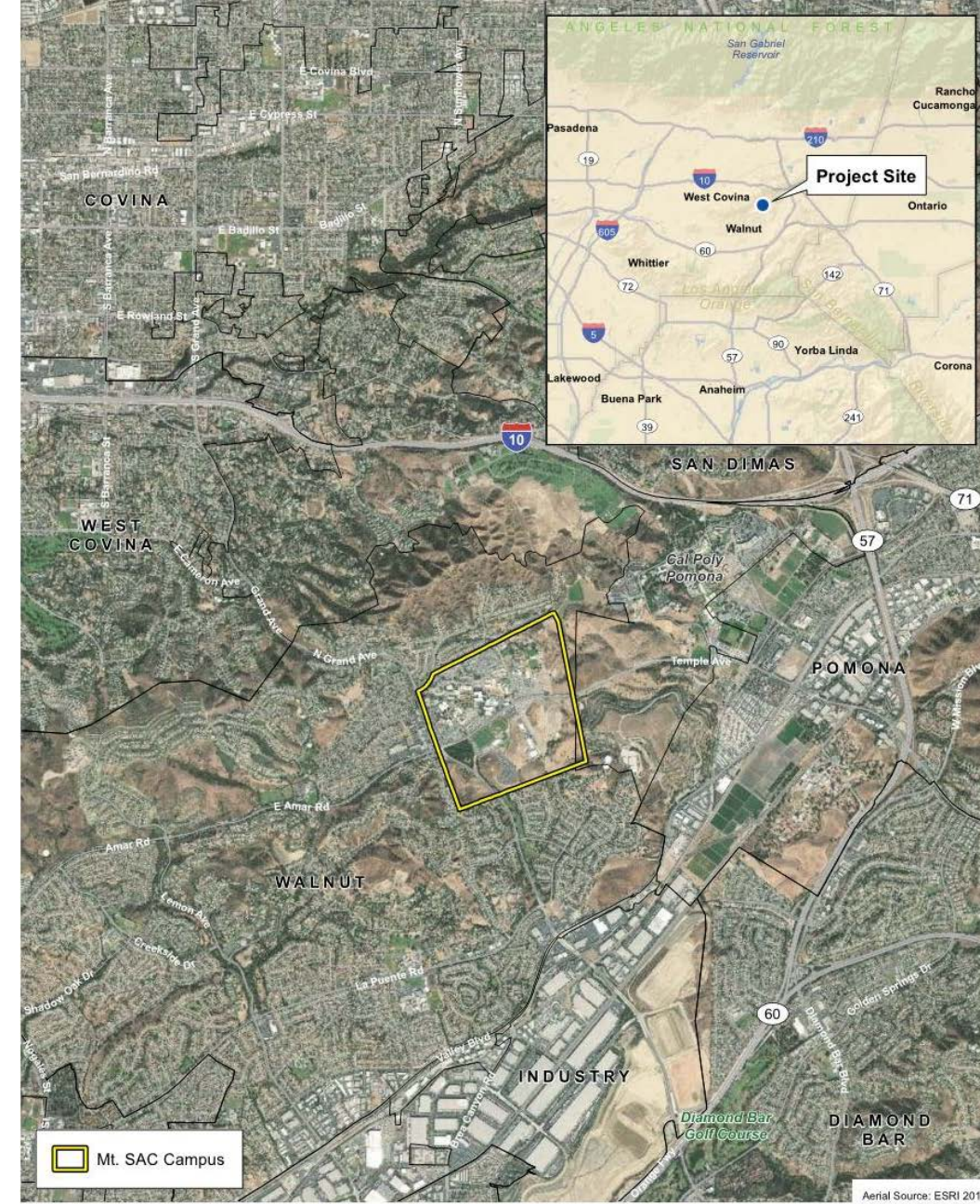
# Description of EIR Proposed Project

- Project Location
- 2018 Facilities Master Plan
- EIR: Project Description
- EIR: New Major Buildings
- EIR: Major Renovations
- EIR: Minor New Construction, Renovation, and Site + Infrastructure Projects
- EIR: Cumulative Projects
- EIR: Project-specific Analyses



# Project Location

- ❖ The Mt. San Antonio College (Mt. SAC) campus is located in the **City of Walnut, in Los Angeles County**.
- ❖ The campus encompasses **418.44 acres** (comprised of 3 parcels) and is located north and south of Temple Avenue east of Grand Avenue, with the “West Parcel” located west of Grand Avenue and south of Amar Road/Temple Avenue.
- ❖ Mountaineer Road and Edinger Way form the northern boundary of the campus and the eastern boundary is consistent with the City of Walnut’s eastern boundary.
- ❖ The California State Polytechnic University (Cal Poly) Pomona is located immediately east of the campus.
- ❖ The Mt. SAC campus is approximately 1.8 miles west of State Route (SR)-57, 1.0 mile south of Interstate (I)-10, and 0.9 mile north of SR-60.



Local and Regional Vicinity Map

Mt. SAC 2018 Educational and Facilities Master Plan

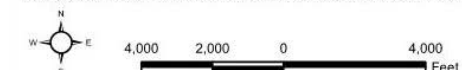


Exhibit 1



# 2018 Facilities Master Plan







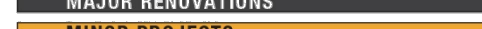


## Facilities recommendations:

- ❖ Campus-wide projects
- ❖ New Major Buildings
- ❖ Major Renovations
- ❖ Minor Projects

## Site and Infrastructure Improvement recommendations:

- ❖ Natural Habitat/Urban Forest
- ❖ Vehicular Circulation + Parking
- ❖ Bicycle Circulation
- ❖ Pedestrian Circulation
- ❖ Open Space
- ❖ Farm Precinct

### LEGEND

	PROPERTY LINE
	EXISTING PERMANENT FACILITIES
	EXISTING TEMPORARY FACILITIES
	NEW MAJOR BUILDINGS
	PARKING STRUCTURES
	MAJOR RENOVATIONS
	MINOR PROJECTS
	EXISTING UTILITIES INFRASTRUCTURE (UNDERGROUND)
	NEW UTILITIES INFRASTRUCTURE (UNDERGROUND)







## EIR: Project Description

Range	Growth Rate
Slow	0.18%
<b>Medium</b>	<b>0.75%</b>
High	1.22%

Using this mid-point of 0.75 percent, the College's projected growth rate is **8.6 percent over the next ten years.**

- ❖ **Stand-alone EIR** (not tiered from previous efforts)
- ❖ Generally has a development and planning horizon of approximately **10 years (through 2027)**
- ❖ Anticipates an increase in campus headcount from **37,864 students in fall 2017 to between 40,802 and 42,745 students in fall 2027** (based on estimated medium and high growth rates)
- ❖ Components associated with **Phase 1A, Phase 1B, and Phase 2** would be implemented during the 10 year horizon period
- ❖ EIR will include both **program and project-level analyses** (where appropriate)

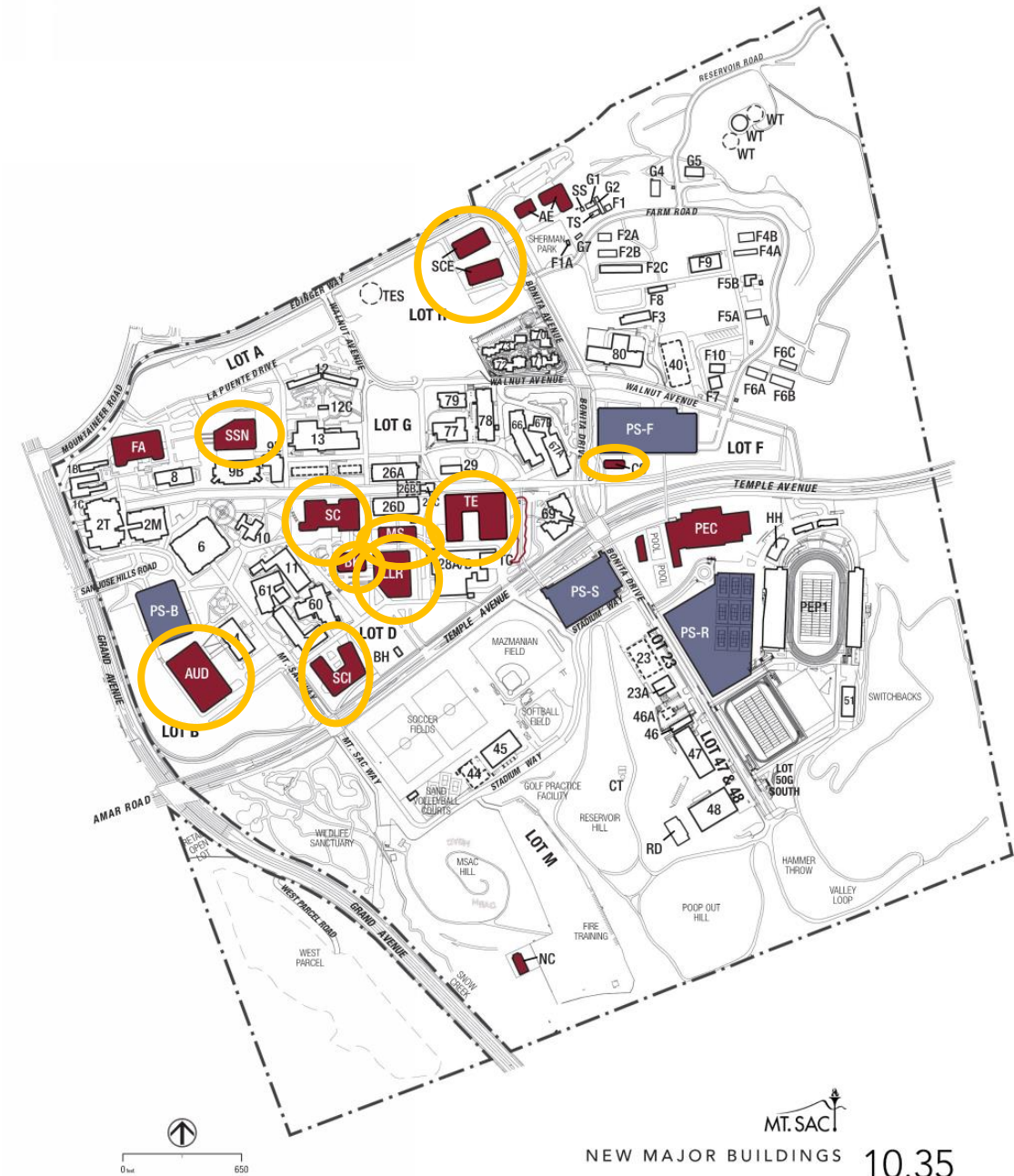


# EIR: New Major Buildings

1. Auditorium
2. Bookstore
3. Campus Safety
4. Library/Learning Resources
5. Makerspace
6. School of Continuing Education
7. Science
8. Student Center
9. Student Services North
10. Technical Education

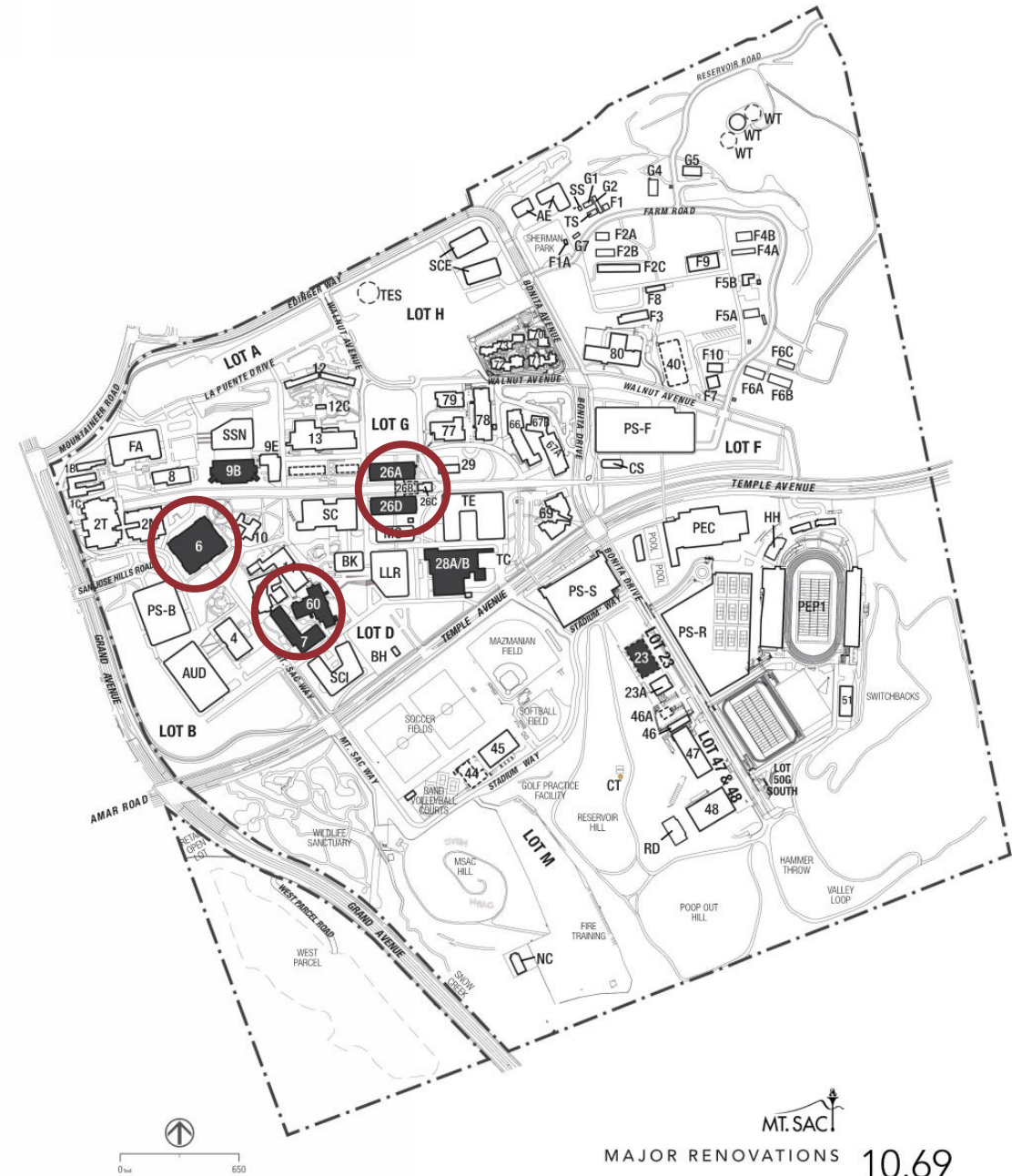
## LEGEND

- PROPERTY LINE
- PERMANENT FACILITIES
- TEMPORARY FACILITIES
- NEW MAJOR BUILDINGS
- PARKING STRUCTURES
- UTILITIES INFRASTRUCTURE (UNDERGROUND)



# EIR: Major Renovations

1. College Services (6)
2. Humanities and Social Sciences (26ABD)
3. Science (7 and 60)



**LEGEND**

- PROPERTY LINE
- EXISTING PERMANENT FACILITIES
- EXISTING TEMPORARY FACILITIES
- MAJOR RENOVATIONS
- UTILITIES INFRASTRUCTURE (UNDERGROUND)



# EIR: Minor New Construction, Renovation, and Site + Infrastructure Projects

Various **minor new construction and renovation projects** on the main campus that are smaller in scope but necessary to provide needed space for:

- ❖ Athletics
- ❖ Instruction/training
- ❖ Offices
- ❖ Storage
- ❖ Workspace

**Site and infrastructure improvement projects** include, but are not limited to:

- ❖ Vehicular and non-vehicular parking and circulation improvements including the construction of 3-4 parking structures
- ❖ Outdoor open space
- ❖ Improvements at the Wildlife Sanctuary
- ❖ Utility infrastructure
- ❖ Farm Precinct infrastructure improvements including two new underground water tanks



## EIR: Cumulative Projects



### **Previously Approved:**

- ❖ Athletics Complex East (PEP Phase 1)
- ❖ Physical Education Complex (PEP Phase 2)
- ❖ West Parcel Site Improvement Project

### **Currently Being Processed:**

- ❖ Transit Center



# EIR Project-Specific Analyses

1. Student Center + Central Campus Infrastructure
2. Bookstore
3. Parking Structure R + Tennis Courts
4. Parking Structure S
5. Sand Volleyball Courts
6. Replacement Communication Tower

## LEGEND

---	PROPERTY LINE
▬	EXISTING PERMANENT FACILITIES
- - -	EXISTING TEMPORARY FACILITIES
■	NEW MAJOR BUILDINGS
■	PARKING STRUCTURES
■	MAJOR RENOVATIONS
■	MINOR PROJECTS
●	EXISTING UTILITIES INFRASTRUCTURE (UNDERGROUND)
●	NEW UTILITIES INFRASTRUCTURE (UNDERGROUND)







# Overview of Environmental Review Process

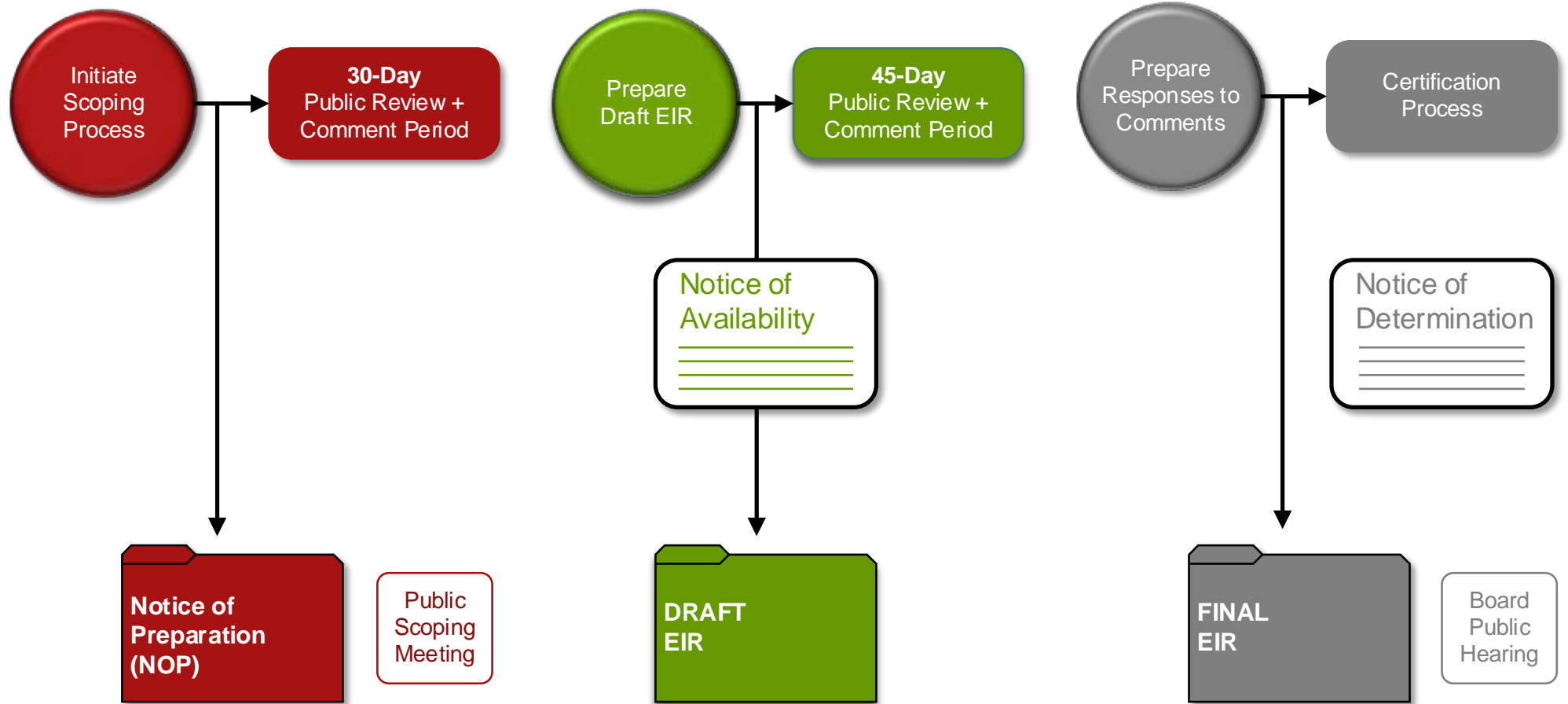
- Environmental Process
- EIR: Sequence
- Issues to be Addressed in the EIR
- Other EIR Sections
- Additional Opportunities for Public Comment

# Environmental Process



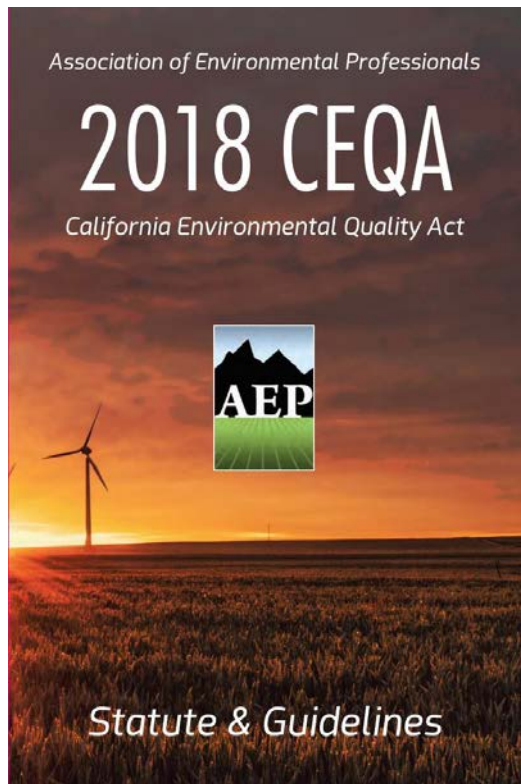
- ❖ The California Environmental Quality Act (CEQA) requires **Mt. SAC, as lead agency**, to review potential environmental effects of the proposed project prior to approval.
- ❖ Mt. SAC has determined that an **Environmental Impact Report (EIR)** is the appropriate form of CEQA documentation.
- ❖ Mt. SAC issued a **Notice of Preparation (NOP)** on September 5, 2018:
  - Notice that an EIR is being prepared.
  - Solicits input regarding the scope of analysis to be included in the EIR
  - **30-day review period ends October 4, 2018**

# EIR: Sequence



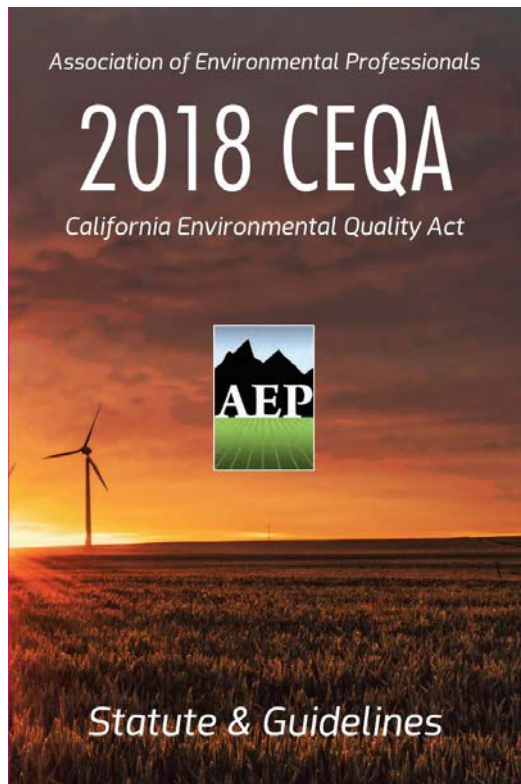


# Issues to be Addressed in EIR



- I. Aesthetics
- II. ~~Agriculture and Forestry Resources~~
- III. Air Quality
- IV. Biological Resources
- V. Cultural Resources
- VI. Geology and Soils
- VII. Greenhouse Gas Emissions
- VIII. Hazards and Hazardous Materials
- IX. Hydrology and Water Quality
- X. Land Use and Planning
- XI. ~~Mineral Resources~~
- XII. Noise
- XIII. Population and Housing
- XIV. Public Services
- XV. Recreation
- XVI. Transportation/Traffic
- XVII. Tribal Cultural Resources
- XVIII. Utilities and Service Systems

# Other EIR Sections



- ❖ Energy Analysis
- ❖ Alternatives to the Proposed Project:
  - No project
  - Alternatives that would avoid or reduce significant impacts
- ❖ Cumulative Effects
- ❖ Growth Inducing Effects



## Additional Opportunities for Public Comment



- ❖ Notice of Preparation (NOP):
  - Submit comments tonight or via mail, email, or hand delivery by **5:00 PM on October 4, 2018**
- ❖ **Draft Environmental Impact Report (EIR):**
  - **45-day public comment period**
- ❖ Mt.SAC Board of Trustees **Public Hearing:**
  - Date TBD



# Public Comment Period





## Public Comment



- ❖ Please come to the front of the room
  - Please **speak into the microphone**
- ❖ State your **name and association**, if appropriate, for the record
- ❖ All comments will be **recorded and considered** during the preparation of the EIR



Remember

THANK YOU

- ❖ Written comments on the Notice of Preparation (NOP) must be submitted by **5:00 PM on October 4, 2018**
- ❖ Written comments on the Draft EIR must be submitted by the close of public comment period or prior to the close of public hearings