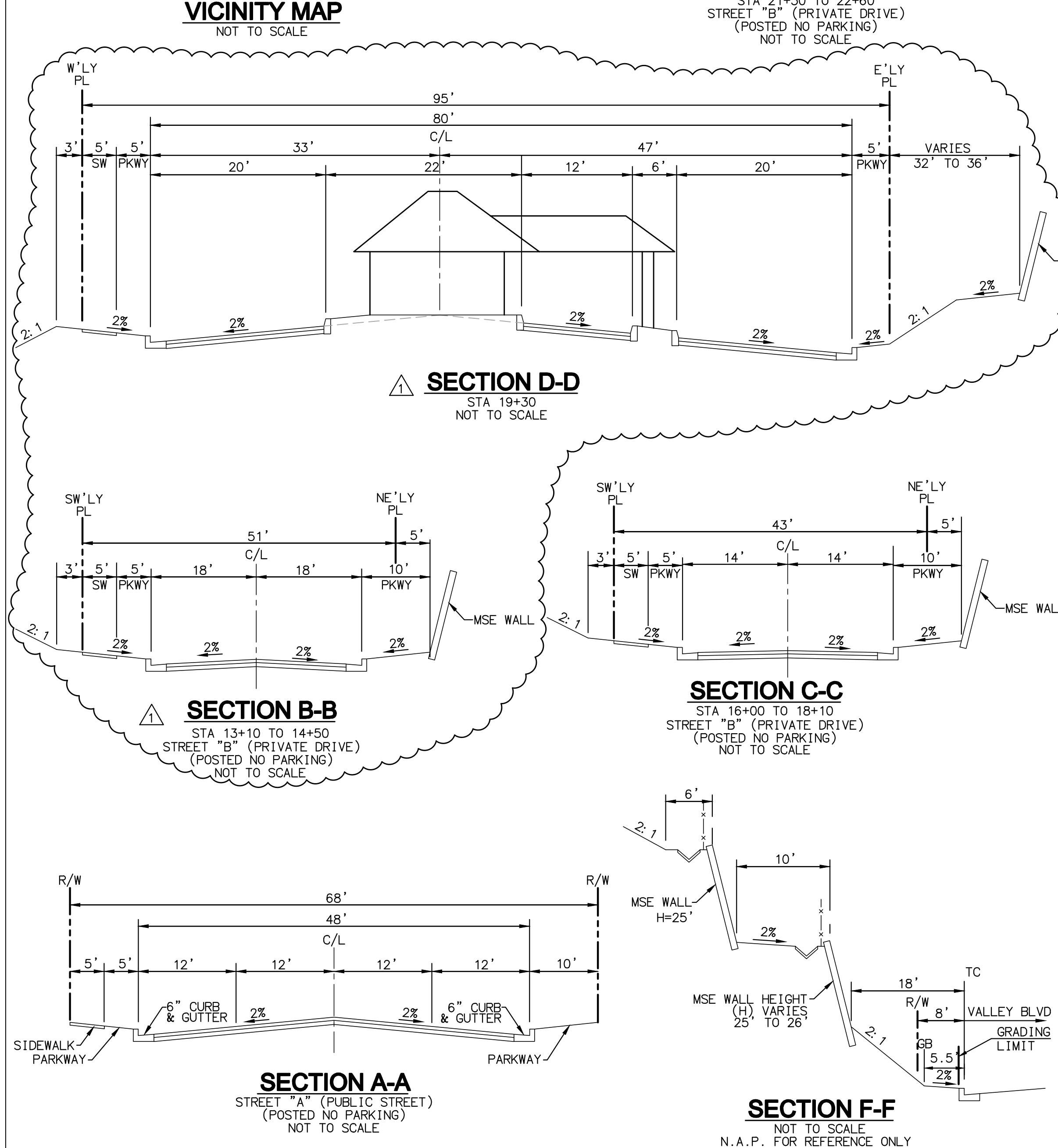
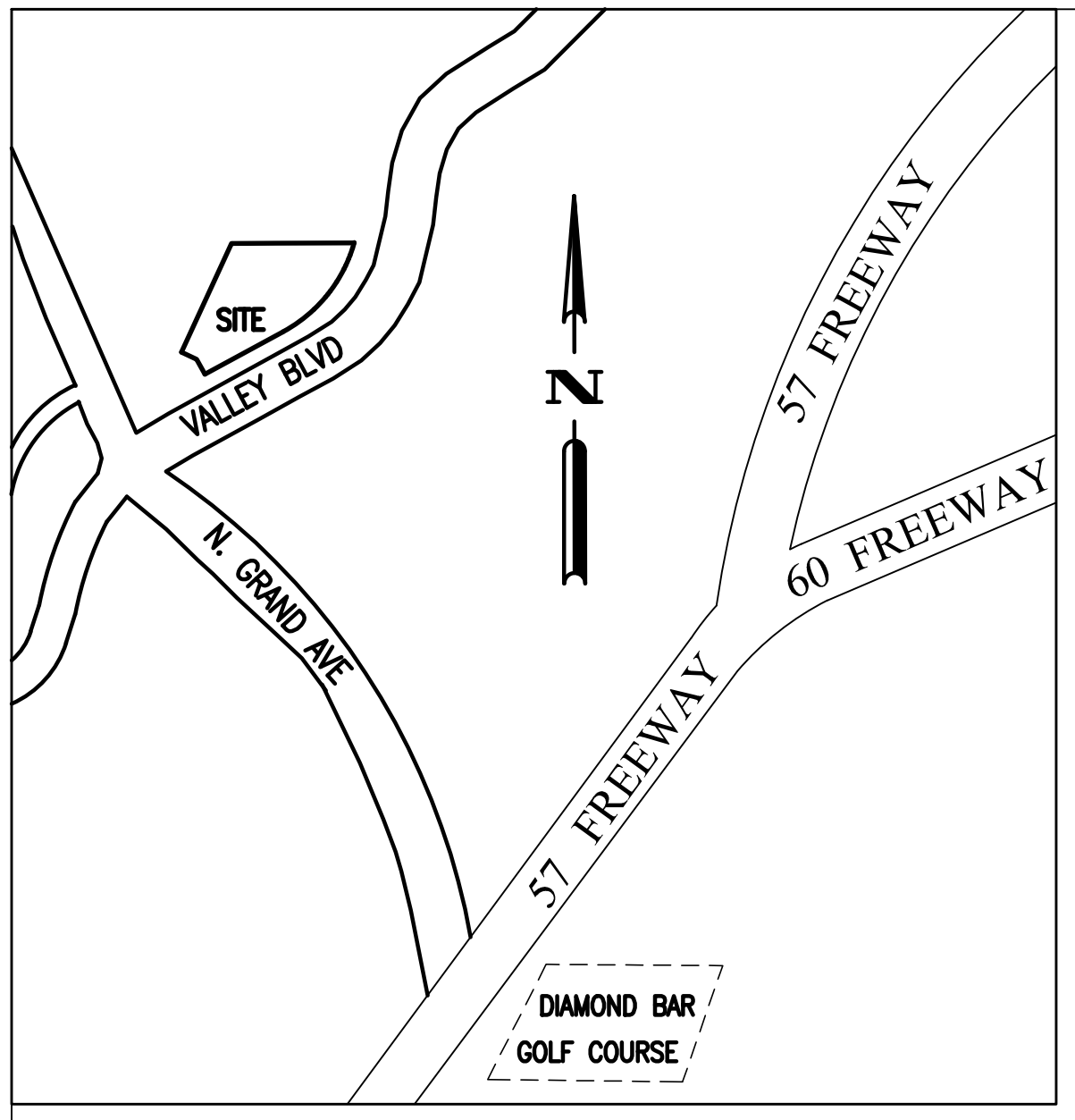


THE TERRACES AT WALNUT AMENDMENT 1 - TTM No. 78210 - EXHIBIT A

City of Walnut, County of Los Angeles
State of California

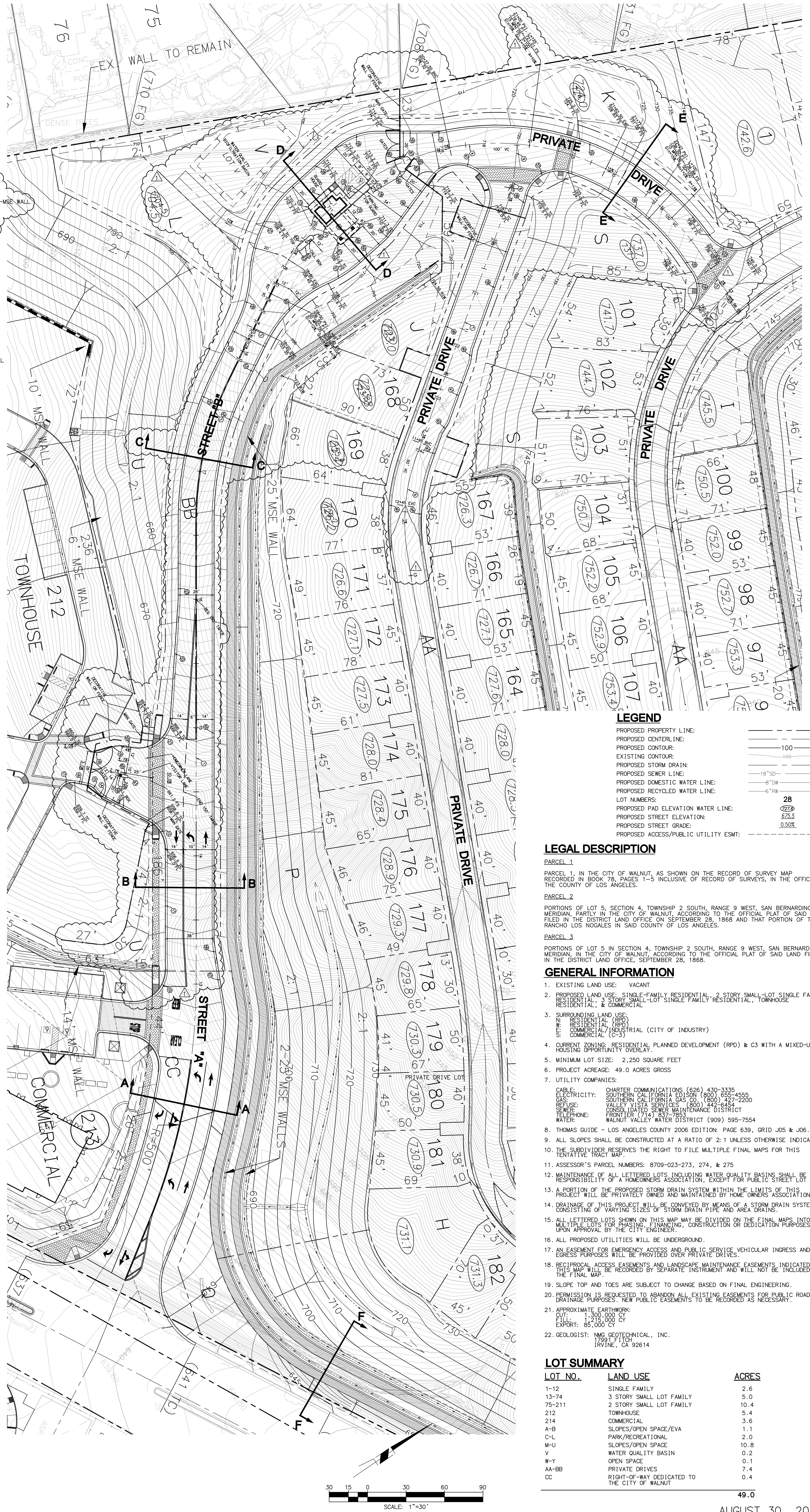


NO	BEARING/Delta	RADIUS	LENGTH	TANGENT
1	N 55° 38' 28" W	250.00'	358.67'	57.81'
2	S 89° 02' 30" W	---	87.12'	---
3	N 29° 36' 58" W	---	87.12'	---
4	N 119° 30' 54" E	190.00'	396.31'	325.86'
5	N 68° 43' 16" E	---	61.37'	---
6	N 29° 13' 14" E	150.00'	76.50'	39.10'
7	N 35° 49' 53" W	---	203.93'	---
8	N 15° 00' 08" E	150.00'	39.28'	19.75'
9	N 50° 50' 01" W	---	14.00'	---
10	N 95° 58' 05" E	25.00'	41.87'	27.75'
11	N 55° 39' 28" W	---	358.67'	---
12	N 55° 39' 28" W	---	358.67'	---
13	N 61° 42' 59" E	---	37.01'	---
14	N 24° 27' 26" E	25.00'	10.67'	5.42'
15	N 40° 41' 20" E	10.00'	7.10'	3.71'
16	N 45° 29' 05" E	---	10.49'	---
17	N 73° 46' 06" E	10.00'	12.88'	7.50'
18	N 149° 27' 54" E	10.00'	26.29'	36.64'
19	N 43° 14' 00" E	25.00'	18.86'	9.91'
20	N 45° 29' 05" E	---	4.20'	---
21	N 97° 19' 42" E	25.00'	42.47'	28.42'

NO	BEARING/Delta	RADIUS	LENGTH	TANGENT
43	N 35° 49' 53" W	---	23.63'	---
44	N 29° 13' 12" E	137.00'	69.87'	35.71'
45	N 61° 42' 59" E	---	37.01'	---
46	N 35° 49' 53" W	---	201.78'	---
47	N 163° 21' 02" E	25.00'	71.28'	170.85'
48	N 180° 00' 00" E	---	51.66'	---
49	N 11° 40' 28" E	60.00'	12.23'	6.13'
50	N 07° 30' 27" W	---	23.00'	---
51	N 15° 29' 53" E	100.00'	31.17'	15.18'
52	N 59° 22' 00" E	100.00'	68.71'	35.77'
53	N 29° 36' 58" W	---	38.37'	---
54	N 26° 02' 30" W	236.00'	107.27'	54.58'
55	N 59° 22' 00" E	---	324.92'	---
56	N 08° 55' 40" E	50.00'	7.79'	3.90'
57	N 64° 35' 08" W	---	50.00'	---
58	N 45° 29' 05" E	---	6.00'	---
59	N 180° 00' 00" E	1.00'	3.14'	---
60	N 45° 29' 05" E	---	6.00'	---
61	N 126° 37' 17" E	1.00'	3.14'	---
62	N 07° 30' 27" W	---	12.00'	---
63	N 180° 00' 00" E	---	6.28'	---

LOT NO.	AREA (SF)	LOT NO.	AREA (SF)	LOT NO.	AREA (SF)	LOT NO.	AREA (SF)	LOT NO.	AREA (SF)
1	11,772	37	3,195	73	3,356	109	2,970	145	3,166
2	10,462	38	3,300	74	3,789	110	3,060	146	3,166
3	10,988	39	3,300	75	4,134	111	3,060	147	3,166
4	9,164	40	3,300	76	3,293	112	3,060	148	3,166
5	11,279	41	3,300	77	3,137	113	3,129	149	3,166
6	13,121	42	3,300	78	3,137	114	3,039	150	3,166
7	7,680	43	3,300	79	3,137	115	3,039	151	3,166
8	7,680	44	3,300	80	3,161	116	3,129	152	3,166
9	7,680	45	3,300	81	3,173	117	3,129	153	3,166
10	7,680	46	3,305	82	3,173	118	3,039	154	3,166
11	7,680	47	3,334	83	3,173	119	3,039	155	3,166
12	8,294	48	3,360	84	3,173	120	3,039	156	3,166
13	4,960	49	3,565	85	3,173	121	3,976	157	3,567
14	3,449	50	4,994	86	3,173	122	3,064	158	3,291
15	3,375	51	4,354	87	3,173	123	3,129	159	3,227
16	3,377	52	3,468	88	3,173	124	3,039	160	3,063
17	3,805	53	3,451	89	3,173	125	3,039	161	3,083
18	3,194	54	4,382	90	3,173	126	3,016	162	3,083
19	3,195	55	3,197	91	3,430	127	3,012	163	3,083
20	3,285	56	3,195	92	3,430	128	3,102	164	3,083
21	3,285	57	3,195	93	3,083	129	3,102	165	3,083
22	3,195	58	3,195	94	3,083	130	3,319	166	3,087
23	3,195	59	3,195	95	3,083	131	3,786	167	3,372
24	3,308	60	3,195	96	3,083	132	4,281	168	4,347
25	3,719	61	3,905	97	3,083	133	4,259	169	4,256
26	5,040	62	3,814	98	3,083	134	3,243	170	4,106
27	3,286	63	3,258	99	3,083	135	3,136	171	3,591
28	3,286	64	3,285	100	3,321	136	3,136	172	3,465
29	4,649	65	3,195	101	4,763	137	3,136	173	3,409
30	4,857	66	3,195	102	4,327	138	3,136	174	3,518
31	3,328	67	3,285	103	3,992	139	3,136	175	3,611
32	3,195	68	3,285	104	3,521	140	3,136	176	3,473
33	3,195	69	3,533	105	3,060	141	3,159	177	3,093
34	3,285	70	3,627	106	2,970	142	3,166	178	3,043
35	3,285	71	3,356	107	2,970	143	3,166	179	3,112
36	3,195	72	3,356	108	2,970	144	3,166	180	2,976

LOT NO.	AREA (SF)	LAND USE	LOT NO.	AREA (SF)	LAND USE
A	9,121	SLOPES/OPEN SPACE/EVA	O	90,423	SLOPES/OPEN SPACE
B	46,190	SLOPES/OPEN SPACE/EVA	P	62,437	SLOPES/OPEN SPACE
C	7,174	PARK/RECREATIONAL	Q	3,863	SLOPES/OPEN SPACE
D	23,993	PARK/RECREATIONAL	R	19,099	SLOPES/OPEN SPACE
E	2,319	PARK/RECREATIONAL	S	20,081	SLOPES/OPEN SPACE
F	9,238	PARK/RECREATIONAL	S-2	7,218	PARK/RECREATIONAL
G	3,073	PARK/RECREATIONAL	T	28,418	SLOPES/OPEN SPACE
H	5,644	PARK/RECREATIONAL	U	74,926	SLOPES/OPEN SPACE
I	4,078	PARK/RECREATIONAL	V	9,709	WATER QUALITY BASIN
J	4,530	PARK/RECREATIONAL	W	1,197	OPEN SPACE
K	12,114	PARK/RECREATIONAL	X	662	OPEN SPACE
L	7,332	PARK/RECREATIONAL	Y	699	OPEN SPACE
M	62,729	SLOPES/OPEN SPACE	AA	228,658	PRIVATE DRIVE
N	108,282	SLOPES/OPEN SPACE	BB	38,669	PRIVATE DRIVE
			CC	18,159	RIGHT OF WAY TO CITY



REVISIONS: 8/31/22

PREPARED BY: **Michael Baker INTERNATIONAL**

OWNER & DEVELOPER: SUNJOINT DEVELOPMENT, LLC
280 MACHIN CT.
CITY OF INDUSTRY, CA 91789
ATTN: CHEN FENG (KATHY CAO)
PHONE: (909) 594-7757

THE TERRACES AT WALNUT
AMENDMENT 1 - TTM NO. 78210
EXHIBIT A
City of Walnut, County of Los Angeles

AUGUST 30, 2022

SHEET **1** OF 1