

CITY OF WALNUT
PARKS AND RECREATION COMMISSION AGENDA
WALNUT CITY HALL
21201 LA PUENTE ROAD, WALNUT
SEPTEMBER 19, 2023

1. CALL TO ORDER 7:00 P.M.
2. FLAG SALUTE COMMISSIONER POLLALIS
3. ROLL CALL COMMISSIONERS BRION, LEPP, MUNGUIA, PEDERSEN & POLLALIS
4. MINUTES REGULAR MINUTES OF AUGUST 15, 2023

5. ORAL COMMUNICATIONS

Any person may present public testimony at this time. If any person wishes to address the Parks and Recreation Commission on any item on the agenda or on any other matter, please present your testimony at this time, and please limit your comments to three minutes. The Commission may choose to remove the item for discussion.

The Chairperson may impose reasonable limitations on public comments to assure an orderly and timely meeting. When addressing the Commission, please write your name and address on the sheet provided on the podium.

6. WRITTEN COMMUNICATIONS

7. CONSENT CALENDAR

A. Parks and Maintenance Report for August 2023

Recommendation: Receive and file.

B. Administratively Approved Park Use Requests August 2023

Recommendation: Receive and file.

C. Recreation Division Activities Summary August 2023

Recommendation: Receive and file.

8. ITEMS REMOVED FROM CONSENT CALENDAR

9. DISCUSSION

A. Dog Park

Recommendation:

1. Conduct an open discussion regarding potential locations in Walnut for a dog park.; and
2. Receive and file this report.

10. COMMISSION ITEMS

11. STAFF ITEMS

- A. Upcoming Recreation Programs/Events
- B. Park Project Updates

12. ANNOUNCEMENTS

13. ADJOURNMENT

Minutes of the Regular Meeting
of the Parks and Recreation Commission
of the City of Walnut

A regular meeting of the City of Walnut Parks and Recreation Commission was held on Tuesday, August 15, 2023.

CALL TO ORDER: The meeting was called to order by C/Lepp at 7:00 p.m.

FLAG SALUTE: Commissioner Pedersen

ROLL CALL:

PRESENT: Commissioners Brion, Lepp, Munguia & Pedersen

ABSENT: Commissioners Pollalis

Also present at the meeting were Director Community Services Barcelo, Deputy Community Services Director Bumia, Community Services Superintendent Martinez, Management Analyst Munoz and Executive Assistant Vermeer.

MINUTES:

C/Pedersen made a motion, seconded by C/Munguia and was carried 3-0 to approve the minutes on June 20, 2023.

AYES: Brion, Munguia & Pedersen

ABSENT: Pollalis

ABSTAIN: Lepp

REORGANIZATION

C/Pedersen nominated C/Munguia for Chairperson.

C/Munguia nominated C/Pedersen for Chairperson.

Vote for Gloria Munguia as Chairperson

AYES: Brion, Lepp & Pedersen

ABSENT: Pollalis

ABSTAIN: Munguia

With a majority vote, DCS Barcelo declared Gloria Munguia Chairperson.

C/Lepp nominated C/Brion for Vice Chairperson.
C/Brion nominated C/Pedersen for Vice Chairperson.

Vote for Alger Brion as Vice Chairperson

AYES: Lepp, Munguia & Pedersen
ABSENT: Pollalis
ABSTAIN: Brion

With a majority vote, C/Munguia declared Alger Brion Vice Chairperson.

ORAL COMMUNICATIONS:

WRITTEN COMMUNICATIONS:

CONSENT CALENDAR:

C/Pedersen made a motion, seconded by C/Brion and carried 4-0, to accept items 8A – 8C under Consent Calendar as recommended.

AYES: Brion, Lepp, Munguia & Pedersen
ABSENT: Pollalis
ABSTAIN: None

ITEMS PULLED FROM CONSENT CALENDAR FOR DISCUSSION:

DISCUSSION:

C/Lepp made a motion, seconded by C/Pedersen and carried 4-0, to receive and file 10A under Discussion.

C/Lepp made a motion, seconded by C/Brion and was carried 4-0, to have staff report on park usage of three possible dog park locations within the city and prepare estimated operational costs.

COMMISSION ITEMS:

STAFF ITEMS:

ANNOUNCEMENTS:

ADJOURNMENT:

There being no further business to come before the Commission, the meeting adjourned at 8:57 p.m.

Chairperson

ATTEST:

Executive Assistant



AGENDA ITEM 7A

- Consent Calendar
- Discussion

WALNUT PARKS AND RECREATION COMMISSION

AGENDA DATE: SEPTEMBER 19, 2023

TO: Parks and Recreation Commission

VIA: Melissa Barcelo, Community Services Director MB

FROM: Kenny Martinez, Community Services Superintendent KM

SUBJECT: Parks Maintenance Report for August 2023

RECOMMENDATION:

It is recommended that the Parks and Recreation Commission receive and file the Parks and Maintenance Report for August 2023.

BACKGROUND:

This report is prepared and provided for the Parks and Recreation Commission for review and information on the current status of the maintenance and operations of the City of Walnut's Park system.

The Maintenance Division of the Community Services Department manages general park maintenance at all City parks. General maintenance is performed largely by a landscape maintenance contractor and some by the City staff. The general maintenance includes mowing, edging, hedging, pruning of shrubs and trees, as well as the monitoring of rodents and pests. It also includes irrigation audits and playground inspections. Restroom maintenance services are provided by the custodial contractor. Park restrooms are open and maintained seven days a week, with the exception of two holidays per year (Thanksgiving Day and Christmas Day).

City parks with sports fields are maintained at an optimum level through the services of sports field specialists. City staff augments the maintenance services through regular inspections and audits of the fields.

City maintenance staff also performs special projects in all parks including graffiti removal and playground equipment repairs. In order to conform to California playground standards, staff performs playground inspections on a weekly basis.

Additional maintenance activities for the division in August included the following:

Arroyo:

- Conducted weekly inspections of the park.

Butterfield:

- Conducted weekly inspections of the Park.
- Removed Graffiti during the month.

Country Hollow:

- Conducted weekly inspections of the park.

Creekside:

- Verticut, and top dressed with sand in the grass areas on baseball fields 1, 2, and the Shetland Field.
- Removed graffiti during the month.
- Treated for gophers throughout the Park.

Heidelberg:

- Unclogged one drinking fountain.

Lemon Creek:

- Removed graffiti during the month.

Ashley:

- Conducted weekly inspections of the park.

Snow Creek:

- Verticut, and top dressed with sand in the grass areas on baseball fields 1, 2, and the Shetland Field.
- Replaced the pressure regulator on the water heater in the plumbing closet.
- Repaired the toilet in the women's restroom.
- Repaired the faucet in the men's restroom.
- Treated for fire ants throughout the Park.
- Treated for gophers throughout the Park.

Suzanne:

- Treated for gophers throughout the Park.

Walnut Hills:

- Conducted weekly inspections of the park.

Walnut Ranch:

- Treated for ground squirrels around the snack bar and electric cage.
- Treated for fire ants throughout the Park.

RELATION TO MISSION STATEMENT:

We will enhance civic pride by offering superior facilities and programs.



AGENDA ITEM 7B

- Consent Calendar
 Discussion

WALNUT PARKS AND RECREATION COMMISSION

AGENDA DATE: SEPTEMBER 19, 2023

TO: Parks and Recreation Commission

VIA: Melissa Barcelo, Director Community Services

MB

FROM: Chris Vermeer, Executive Assistant

CV

SUBJECT: Administratively Approved Park Use Requests – AUGUST 2023

RECOMMENDATION:

It is recommended that the Parks and Recreation Commission receive and file this informational report.

ANALYSIS:

Attached, please find a list of park use requests that were administratively approved during the month of August. In addition, staff included requests that were administratively approved since June and have been reviewed by the Commission during previous meetings.

RELATION TO MISSION STATEMENT:

We will enhance civic pride by offering superior facilities and programs.

Location	Date	Day	Start - End Time	Event	Attend/Qty
Lemon Creek Picnic Area	Jun 3, 2023	Saturday	12:00 PM - 05:00 PM	Birthday	20
	Jun 10, 2023	Saturday	10:00 AM - 06:00 PM	Picnic	100
	Jun 17, 2023	Saturday	10:00 AM - 05:00 PM	Picnic	60
	Jun 18, 2023	Sunday	11:00 AM - 05:00 PM	Picnic	40
	Jun 24, 2023	Saturday	09:00 AM - 03:00 PM	Picnic	45
	Jul 8, 2023	Saturday	09:00 AM - 08:00 PM	Birthday	60
	Jul 9, 2023	Sunday	03:00 PM - 07:00 PM	Birthday	40
	Jul 15, 2023	Saturday	10:00 AM - 05:00 PM	Birthday	60
	Jul 16, 2023	Sunday	01:00 PM - 07:00 PM	Picnic	50
	Jul 22, 2023	Saturday	09:00 AM - 05:00 PM	Picnic	70
	Jul 23, 2023	Sunday	08:00 AM - 05:00 PM	Picnic	80
	Jul 29, 2023	Saturday	05:00 PM - 08:00 PM	Birthday	20
	Jul 30, 2023	Sunday	01:00 PM - 06:00 PM	Picnic	90
	Aug 5, 2023	Saturday	10:00 AM - 06:00 PM	Birthday	20
	Aug 13, 2023	Sunday	11:00 AM - 07:00 PM	Reunion	50
	Aug 19, 2023	Saturday	09:00 AM - 08:00 PM	Birthday	75
	Aug 26, 2023	Saturday	02:00 PM - 07:00 PM	Birthday	60
Suzanne Picnic Area	Jun 3, 2023	Saturday	09:00 AM - 04:00 PM	Picnic	30
	Jun 4, 2023	Sunday	12:00 PM - 06:00 PM	Birthday	70
	Jun 10, 2023	Saturday	09:00 AM - 02:00 PM	Picnic	80
	Jun 11, 2023	Sunday	12:00 PM - 06:00 PM	Birthday	30
	Jun 17, 2023	Saturday	08:00 AM - 04:00 PM	Picnic	50
	Jun 18, 2023	Sunday	01:00 PM - 06:00 PM	Picnic	20
	Jun 24, 2023	Saturday	12:00 PM - 08:00 PM	Reunion	60
	Jun 25, 2023	Sunday	10:00 AM - 05:00 PM	Birthday	50
	Jul 1, 2023	Saturday	02:00 PM - 08:00 PM	Birthday	65
	Jul 8, 2023	Saturday	07:00 AM - 10:00 PM	Reunion	75
	Jul 9, 2023	Sunday	03:00 PM - 09:00 PM	Picnic	149
	Jul 15, 2023	Saturday	10:00 AM - 05:00 PM	Picnic	100
	Jul 16, 2023	Sunday	10:00 AM - 04:00 PM	Picnic	40
	Jul 22, 2023	Saturday	02:00 PM - 09:00 PM	Picnic	128
	Jul 23, 2023	Sunday	09:00 AM - 03:00 PM	Birthday	40
	Jul 29, 2023	Saturday	02:00 PM - 06:00 PM	Birthday	70
	Aug 5, 2023	Saturday	04:00 PM - 07:30 PM	Picnic	110
	Aug 6, 2023	Sunday	07:00 AM - 02:00 PM	Baby Shower	50
	Aug 12, 2023	Saturday	11:00 AM - 04:00 PM	Picnic	95
	Aug 19, 2023	Saturday	12:00 PM - 07:00 PM	Picnic	35
Aug 26, 2023	Saturday	10:00 AM - 07:00 PM	Birthday	30	



AGENDA ITEM 7C

Consent Calendar

Discussion

WALNUT PARKS AND RECREATION COMMISSION

AGENDA DATE: SEPTEMBER 19, 2023

TO: Parks and Recreation Commission

VIA: Melissa Barcelo, Community Services Director MB

FROM: Jamie Bumia, Deputy Community Services Director JB

SUBJECT: Recreation Division Activities Summary

RECOMMENDATION:

Staff recommends that the Parks and Recreation Commission receive and file this report.

BACKGROUND:

This report is prepared and provided for the Parks and Recreation Commission for review and information on the Recreation Programs that occurred during the months of June and July.

SENIOR PROGRAMS:

SENIOR DINE-IN NUTRITION LUNCH PROGRAM

The Senior Dine-In Nutrition program is open to seniors 60 years and older. Since the start of May, hot meals are being served Monday through Friday, on a first-come first-serve basis. To participate in this program guests must complete a YWCA intake form, check-in begins at 10:30 a.m. with meals served from 11:00 a.m. to 12:00 p.m. or until food is available. Average attendance : 60+

SOCIAL CONNECTIONS:

The City of Walnut Senior Center is now partnering with the Los Angeles County of Mental Health Department, on Mondays from 11:00 am to 12:00 pm to offer a one-hour support group for seniors allowing individuals to come together around a common activity to develop social connections. Here seniors are able to come and socialize, play games, share their stories, and explore different topics with the Department Staff and their fellow peers.

Average attendance: 15-20 participants

SENIOR SEMINARS / SPECIAL EVENTS:

Free Seminar: Dementia Home Safety

August 8, 2023

Presented by: Alzheimer Association

Info: Learn about methods to modify your home to improve safety living for people with dementia. Attendance: 15

Meet & Greet: Aging Next

August 9, 2023

Info: Local non-profit organization providing a broad range of services and support to older adults to empower independence at home.

Meet & Greet: Foothill Family

August 16, 2023

Info: Local non-profit organization helping families and older adults thrive through community-based services.

Free Seminar: Caregivers are People Too

August 22, 2023

Presented by: Independence at Home

Info: Caring for someone else is one of the most rewarding things you can do, but it is also one of the hardest. Learn how to take care of yourself to be the best caregiver you can be. Attendance: 6

Meet & Greet: California Phones

August 23, 2023

Info: California Phones from the California Telephone Access Program provides free specialized phones and accessories to all who qualify.

Endless Summer Dinner and Dance

Date: August 17, 2023

Info: The guests danced the night away to the music from band duo, Global Affair. Also, they enjoyed a delicious buffet dinner from Tiscareno's Catering. A Door-prize opportunity drawing was held for great prizes. Finally, a fun tropical fan and swirl straw were available for purchase as a keepsake. A total of 86 participants attended this event.

OLDER ADULT CLASSES:

OLDER ADULT CLASSES

Heart and Soul Line Dance classes started offering lessons twice a week. Monday classes are perfect for the working older adult and scheduled for 6pm. Thursday classes are perfect for the retired person, scheduled for the morning at 9:30 am. These classes are a perfect way to good

heart health without the constant strain on joints and easy to follow. All levels are welcome and no partner is necessary.

Zumba Gold classes are now being offered at the Senior Center on Mondays from 12:30 pm to 1:30 pm. Zumba Gold is a lower impact dance class designed with seniors in mind. This fun and social class will teach different types of Latin and international dances. This class provides simple to follow Zumba choreography that promotes balance, range of motion, posture strengthening and coordination.

GROW GROUP COUNSELING

The Senior Group GROW Group Counseling program has continued to be in person, since the transition of the virtual forum. GROW meets the first Friday of every month from 9:00 am to 11:00 am. Participants ages 55 and older are welcome and encouraged to learn new skills that will allow them to GROW.

TEEN CENTER:

On August 14, the Teen Center welcomed back students for the new school year. Teens in 6th through 12th grades are able to enjoy activities including sports, crafts, board games, movies, air hockey, table tennis, foosball and pool. Homework assistance is available to those who wish and new this year the Teen Center's Computer lab reopened with 10 new computers for the teens to utilize for homework and games. Teen Center membership for the school-year will be \$120 for the year or \$75 for each semester. Staff began the year with bringing back the popular Special Day treats with Snow Cones, Nachos and Back to School Punch. Staff is working on preparing for the return of Teen Friday Nights (TFN's) in September. Currently there are 206 Teen Center members registered.

Youth and Family Group Counseling

This program is conducted every Monday at 6:00 pm at the Walnut Senior Center.

SUMMER CAMPS AND AQUATICS:

Camp Movin' n' Groovin' (CMG)

CMG opened it's 10-week program on June

Camp Movin' n' Groovin (CMG) is back this summer to host ten weeks of fun programming.

This camp is appropriate for youth ages 7 to 14 years. It includes an assortment of activities designed to get children "moving" as well as crafts, trips and snacks. In the month of August CMG was completely sold out with 40 campers each week. Parents can choose to have their children participate in Movin' All Day from 7:00 am to 6:00 pm for \$200 a week or In the Grove from 9:00 am to 3:00 pm for \$150 a week.

AQUATICS

The Walnut Valley Unified School District allocated time at the Walnut High School pool this summer. While this time is truncated from prior years, it most importantly permits the City to

offer Tiny Tots, all swim levels (1 – 5), adaptive lessons and adult lap swim. Current staffing levels also work well with the allotted time. Group and adaptive swim classes began May 30 as well with classes starting at 9:15 am and running approximately 30 minutes throughout the morning concluding by 1:00 pm. The Aquatics program ran for 10 weeks and concluded on August 4.

The Recreation Division Sharks Swim Team for the summer began practices May 30 practices are held Monday through Friday from 7:00 am to 9:00 am. The Sharks Swim team competed in the SCMAF Championship Swim Meet on August 12 in the City of Santa Clarita where they competed against swim teams from all over the Southern California as far south as Santa Ana up to Kern County. We had 29 of the 51 Sharks Swim team represent the City at the Championship meet. The Sharks also participated in a quad meet against the Covina Blue Rays Covina, Irwindale and Duarte teams to prepare them for the SCMAF Championship on August 5.

SPORTS LEAGUES & CLASSES:

Open Gym hours for Table Tennis, Badminton, and Basketball are available in the morning from 8:30 am to 1:30 pm at the Walnut Gymnasium and volleyball on Tuesdays from 7:00 pm to 10:30 pm. Starting in August additional hours for those activities were added on to Saturdays and will be open until November.

Uptempo Basketball Academy held the last of their three camps in August. This camp hosted 56 participants from August 7 -10. The camp ran from 9:00 am to 2:00 pm and participants were engaged in multiple skill learning drills and scrimmage games on a daily basis.

Walnut Youth Basketball (WYB)

The Summer WYB season was a six-week coed league with 22 teams for children in grades K through 8th. Games concluded on August 5. Staff is preparing for the upcoming Winter season which will begin registration the end of September.

The Adult Basketball League (ABL)

The Summer ABL for Wednesday, Thursday and Sunday League continued in August with a total of 54 teams playing those days. New this year we added a 35 and older Division on Thursday night and have 4 teams participating.

SENIOR/COMMUNITY EXCURSIONS:

<u>Senior Excursions:</u>	<u>Date</u>	<u>Participants</u>
Reagan Presidential Library	August 8	46 (FULL)
Smooth Summer Jazz	August 27	46 (FULL)

<u>Community Excursions:</u>	<u>Date</u>	<u>Participants</u>
Lake Arrowhead Tour and Explore	August 12	46 (FULL)

RECREATION CLASSES:

Webby Dance Ballet, Jazz and Hip Hop and Creative Dance, Young Rembrandts Drawing classes, Da Hula Studio, Heart and Soul Line Dance and International Line Dance continue to hold strong numbers for the beginning weeks of the spring session. Classes are offered both at the Senior Center and Gymnasium.

CITY-WIDE SPECIAL EVENTS:

Music and Movies in the Park

The Music and Movies in the Park series began on Tuesday, July 11 and continued every Tuesday in the month through National Night Out, August 1. The series was held from 6:00 pm to 10:30 pm with each week featuring a Community Showcase. This year's sponsors included our loyal sponsor Valley Vista Services and US Bank. Also joining us each night was the Walnut Valley Sheriffs, with their public outreach program and a variety of Food Trucks.

On Tuesday, August 1 the City hosted the finale to the Music and Movies in the Park Series with National Night Out featuring the Ace Band, and the movie, The League of Super Pets. Approximately 500+ guests were in attendance for the event. Our vendor booths included Walnut/Diamond Bar Sheriffs Department, Valley Vista Services, US Bank, Assemblymember Lisa Calderon, Red Cross, Community Services, and an Arbor Booth. Our Community Showcase featured: Champions Karate Dojo. Food Trucks included Kogi BBQ, Savage Tacos, Philly Phil's Italian Ice, and The Hibachi Truck



AGENDA ITEM 9A

- Consent Calendar
 Discussion

WALNUT PARKS AND RECREATION COMMISSION

AGENDA DATE: SEPTEMBER 19, 2023

TO: Parks and Recreation Commission

VIA: Melissa Barcelo, Community Services Director MB

**FROM : Jamie Bumia, Deputy Community Services Director
Corinne Munoz, Management Analyst**

SUBJECT: Discussion Re: Dog Park

RECOMMENDATION:

Staff recommends that the Parks and Recreation Commission:

1. Conduct an open discussion regarding potential locations in Walnut for a dog park.; and
2. Receive and file this report.

BACKGROUND:

The Commission has considered dog park development in past years, most recently in October 2022 and January 2020. The Commission has supported the idea, even including it as a proposed amenity in the Walnut Ranch Park Expansion Environmental Impact Report.

At the August 15, 2023 Parks and Recreation Commission Meeting, Mayor Pro Tem, Linda Freedman requested the Commission to revisit the topic of a dog park and discuss the feasibility of constructing one in Walnut. Staff was directed to come back to the Commission with specific information regarding a dog park in the City of Walnut.

ANALYSIS:

At the previous Parks and Recreation Commission Meeting on August 15, 2023 Staff was directed to look at potential site(s):

1. North 40 located at Walnut Ranch Park
2. Country Hollow Park
3. Snow Creek Park
4. Suzanne Park

While researching the site(s), Staff also has to consider the following:

1. Size—be at least one acre or more in size,
2. Perimeter Fencing—be surrounded by a 4'-6' fence and gated (divided for large and small dogs),
3. Amenities—shade and water for people and dogs, sitting areas,
4. Have set hours of operation,
5. Have ample parking,
6. Contain pet waste bag dispensers and pet waste collection stations,
7. Be accessible per ADA regulations, and
8. Have low-level security lighting at night for security purposes.

Other factors that need to be considered that are associated with the establishment of a Dog Park include financial and community support, impacts related to noise, lighting, site maintenance, environmental concerns, health concerns for both individual and animals.

The following attachment outlines the following:

- Potential Location(s)
- Pros and Cons of site(s)
- An overlook of surrounding Dog Parks within the following cities:
 - Diamond Bar
 - Chino Hills
 - Claremont
 - San Dimas
 - Brea
- Points to Consider
- Next Steps

One of the biggest factors with dog parks is location, both in terms of neighborhood compatibility and the fit with other park uses. In addition, since there are not a large number of dog parks, they tend to attract users from surrounding communities. As such, parking is of paramount importance and should be considered when identifying a potential location. Within the attachment, Staff has outlined each potential site with size, proximity to surrounding residential homes and existing/possible parking location(s).

Staff is looking for further direction from the Parks and Recreation Commission for selecting a potential dog site location.

RELATION TO MISSION STATEMENT:

We will collaborate by encouraging open discussion.

Attachment:

1. Dog Park PowerPoint Presentation



Dog Park

CITY OF WALNUT

Dog Park

Overview of Discussion



- ❖ Potential Site(s)
- ❖ Pros & Cons of Site(s)
- ❖ Local Dog Parks
 - Diamond Bar – Pantera Dog Park
 - Chino Hills – Vila Borba Dog Park
 - Claremont – Pooch Dog Park
 - San Dimas – Dog Park
 - Brea – Wildcatters Dog Park
- ❖ Points to Consider



Potential Site(s) – Site 1

North 40 (Walnut Ranch Park)





North 40 Walnut Ranch Park

Pros

- ▶ Parking available
- ▶ Existing amenities:
 - Restrooms
 - Playground

Cons

- ▶ Soccer Fields
 - AYSO & Diamond Bar Walnut Valley United Soccer Club
- ▶ Westhoff Elementary School
- ▶ Topography
- ▶ No existing amenities in area

Potential Site(s) – Site 2

Country Hollow Park



Country Hollow Park



Pros

- ▶ Grading
- ▶ Lighting
- ▶ Existing flat area
- ▶ Existing amenities include:
 - Picnic tables
 - Shade structure

Cons

- ▶ Closer proximity to residence
 - Noise
 - Safety
- ▶ Limited Parking

Potential Site(s) Site 3

Snow Creek Park



Approx. 178'
to residence

Approx. 30 existing
parking spaces

Dog Park
± 1.1 acres

Approx. 230'
to residence

Snow Creek Park



Pros

- ▶ Parking
- ▶ Grading
- ▶ Lighting
- ▶ Existing amenities include:
 - Restroom
 - Playground
- ▶ More centralized

Cons

- ▶ Loss of one (1) baseball field



Snow Creek Park

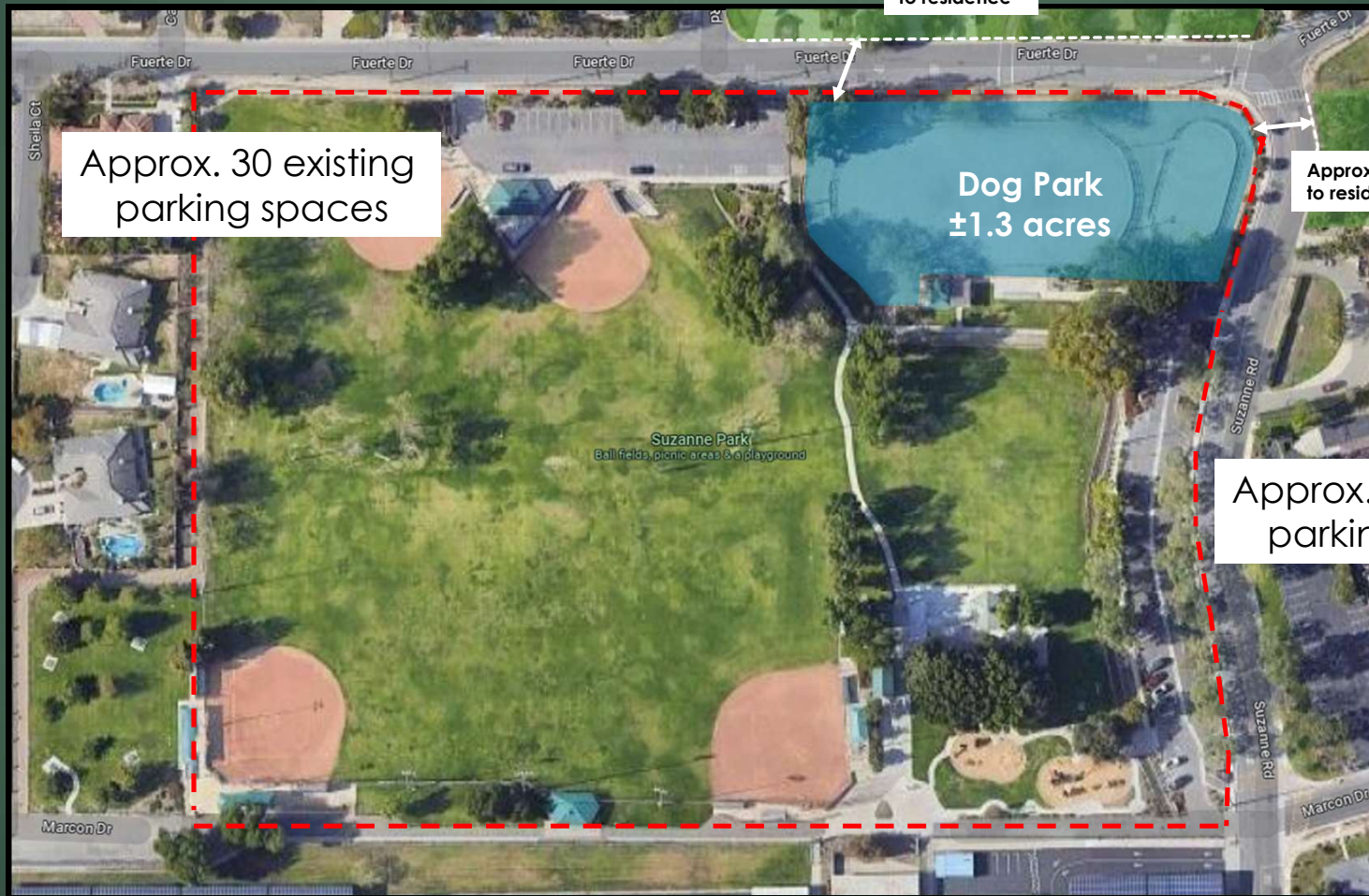
One Pony Division
Baseball Field (Ages 13-
14)

Walnut Pony Baseball

- ▶ Fall/Spring Season Schedule
 - Monday – Friday (Practice)
 - Saturday's (Games)
- ▶ 15 Pony Division Players
 - 6 Walnut Resident's/ 9 other
 - \$120 total for Pony Player Fees

Potential Site(s) Site 4

Suzanne Park



Approx. 30 existing parking spaces

Approx. 50' to residence

Dog Park
±1.3 acres

Approx. 50' to residence

Approx. 50 existing parking spaces

Suzanne Park



Pros

- ▶ Parking
- ▶ Grading
- ▶ Lighting
- ▶ Existing amenities include:
 - Restroom
 - Playground
- ▶ Centralized

Cons

- ▶ Loss of one (1) horse arena

Pantera Dog Park Diamond Bar



- ▶ Two enclosures:
 - 0.6-acre (Large Dogs over 25 lbs)
 - 0.3-acre (Small Dogs under 25 lbs)
- ▶ Six-inches of wood fiber used for ground cover
- ▶ Hours of Operation: 30 mins before sunrise until 30 mins after sunset
- ▶ Amenities
 - ADA accessible drinking fountain with pet bowl
 - Hose bibs for additional water access
 - Trash receptacles
 - Park benches
 - ADA accessible walkway leading to trail
 - Pet waste bags for clean-up by pet owners
- ▶ Total Project Cost:
 - \$234,408.00
- ▶ Population size = 53,857

Pantera Dog Park Diamond Bar



Dog Park Rules

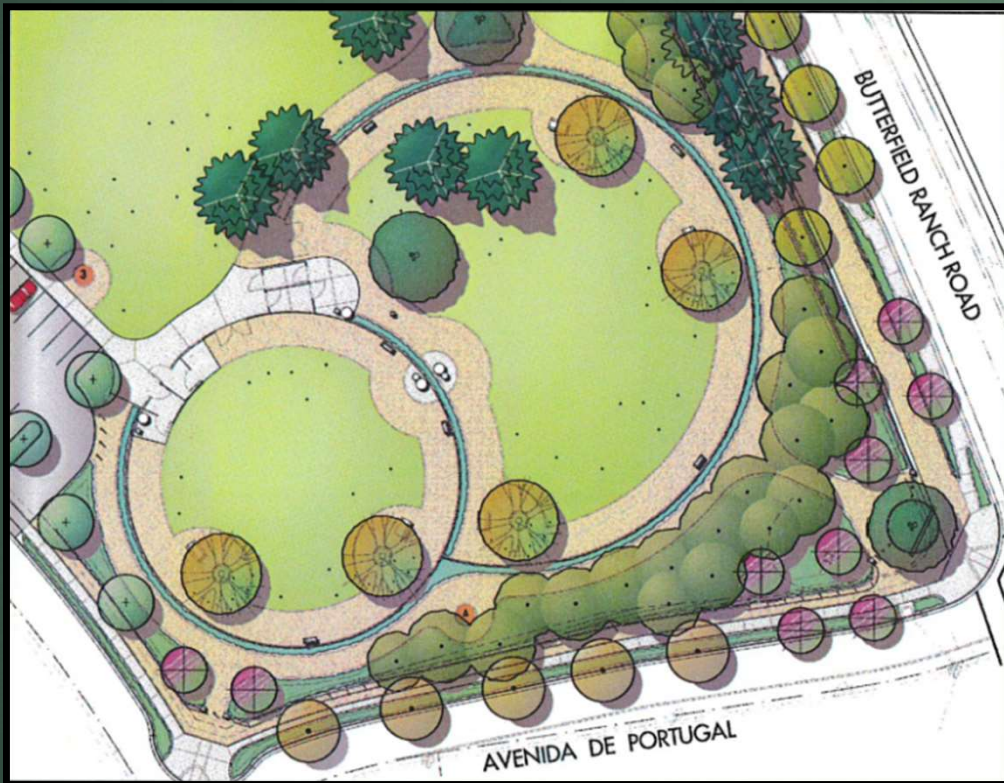
- Park use is limited to dog owners and their dog(s).
- All other animals and activities are prohibited.
- Areas Separated by Weight - Large dogs 25 pounds and over; Small dogs less than 25 pounds
- Handlers may not bring more than 3 dogs at any one time
- Children under the age of 14 years must be accompanied by an adult
- Dogs and children must never be left unattended
- Dogs must be on a leash at all times whenever outside of fenced area
- Current license tag must be worn at all times and vaccinations must be current
- Owners must clean up after their dog(s) and properly dispose of the waste
- Leashed dogs are not allowed within the fenced areas
- Spiked collars are not allowed
- Aggressive dogs, dogs in heat, and puppies younger than four months are not allowed
- Digging not allowed, all holes must be promptly filled by owner
- Spectators are not allowed within the fenced area
- Food of any kind (including dog treats), and glass containers are not allowed
- Unauthorized pieces of equipment are not allowed
- Alcohol or drug use is not allowed
- Special events or contests are not allowed without prior written authorization
- Visitors' use of Dog Park is of their own risk
- All other park rules are applicable and enforceable

Vila Borba Dog Park Chino Hills



- ▶ Proximity to nearest homes – 660'
- ▶ Two enclosures:
 - 0.7-acre (Large Dogs over 25 lbs or taller than 18")
 - 0.4-acre (Small Dogs under 25 lbs, max 18" tall.)
- ▶ Turf ground cover
- ▶ Hours of Operation: 30 mins before sunrise until 30 mins after sunset.
 - Closed from 6:00-11:00 am for regular maintenance every Tuesday.
 - Closed during wet weather, possibly 3 days following
- ▶ Amenities
 - Shade Structures
 - Trash receptacles
 - Park benches
 - ADA accessible
 - Pet waste bags for clean-up by pet owners
 - Dog-friendly drinking fountains
- ▶ Population size = 78,665
- ▶ Operation Cost:
 - \$23,000 annually on dog bags
 - Maintenance and Staff cost tbd

Vila Borba Dog Park Chino Hills



Required

1. Ensure that dogs are properly licensed and vaccinated prior to visiting the dog park.
2. Dog handlers under the age of 14 years old must be accompanied by an adult.
3. Dogs are to be leashed until they are safely inside the dog park transition area. Dogs must be re-leashed prior to exiting the dog park.
4. Owners must supervise dogs at all times and intervene if any rough play or digging occurs.
5. Dogs must be removed for the remainder of the day if behavior becomes aggressive or barking becomes excessive.
6. Remove and properly dispose of dog waste in provided receptacles.

Not Permitted

1. Handlers bringing more than three (3) dogs into the park at a time.
2. Dogs that are not comfortable around other dogs.
3. Aggressive dogs, dogs in heat, and puppies younger than four (4) months old.
4. Food of any kind (including dog treats).
5. Children's strollers, children's toys, wheeled toys, or dog strollers.
6. Unattended or abandoned dogs.
7. Professional dog training or other special events without prior approval from the City's Community Services Department.

Note: If a dog injures a person or another animal, the person responsible for the dog shall immediately provide the dog owner's name and address, as well as any insurance information requested by or on behalf of the injured person, or by any city employee and shall file a report with the City within five (5) days on a form approved by the Community Services Director.

Vila Borba Dog Park Chino Hills



Pooch Dog Park Claremont



- ▶ Two enclosures:
 - 0.85-acre (Large Dogs over 25 lbs)
 - 0.15-acre (Small Dogs under 25 lbs)
- ▶ Turf ground cover
- ▶ Hours of Operation: 7:00 a.m. to 9:00 p.m.
 - Closed during the months of April & November for turf renovation and maintenance
- ▶ Amenities
 - Trash receptacles
 - Park benches/picnic tables
 - Water Fountains
 - Dog exercise equipment
 - Dog wash
 - Dog waste bags NOT provided
 - Walkway path
- ▶ Population size = 35,703



FEATURE LEGEND:

- | | |
|--|---|
| ① Renovated turf area. New soil preparation, new irrigation system and hybrid Bermuda "Bandera" sod within existing concrete header. | ⑭ Existing cloth shade cover with four posts to remain. |
| ② New stabilized and compacted decomposed granite paving with dust control irrigation. | ⑮ Existing picnic table. |
| ③ New concrete under existing bench seating and adjacent to shade structure pad next to turf. | ⑯ Existing pet bag waste station. |
| ④ New masonry wall storage area with gates and new concrete paving. | ⑰ Existing chain link fencing. |
| ⑤ New beach pebble fill at existing dog wash area. | ⑱ Existing trees to remain with new mulch rings on turf. |
| ⑥ New 3" thick mulch layer at existing and new planters. | ⑲ Existing bulletin board with new stone veneer accent column wrap and new concrete paving. |
| ⑦ New tree in circular planter with concrete header. | ⑳ Existing trees at south perimeter to be trimmed to allow more sunlight. |
| ⑧ New Boston Ivy planted next to wall. | ㉑ New hose bib at dog wash area with auto shut-off and hose rack. |
| ⑨ New plastisol-coated trash receptacle with lid. | ㉒ Existing palm tree to remain. |
| ⑩ New 12" wide concrete header beneath fence separating small and large dog areas. | ㉓ Remove existing hose and cage. |
| ⑪ Remove existing hose bib on riser. | ㉔ Relocated bench with new concrete pad below. |
| ⑫ Existing concrete paving. | ㉕ Existing mower double access gates to remain. |
| ⑬ Existing drinking fountain with attached pet bowl in concrete area to remain. | ㉖ Existing access gate and concrete pad to remain. |
| | ㉗ Remove existing tree. |
| | ㉘ Remove existing tree and concrete header. |
| | ㉙ New canine exercise equipment. |

Pooch Dog Park Claremont

ATTACHMENT A

Pooch Dog Park Claremont



Pooch Dog Park Claremont



1. Hours of operation: 7:00 a.m. to 9 p.m.
2. Dogs and people are not permitted in the dog park outside of these hours.
3. The park is not recommended for infants and toddlers.
4. Off-leash dogs must be accompanied by their users at all times.
5. Users must keep their dogs on leashes going to and from the leash-free area.
6. All dogs must be under the voice control of their caretakers at all times.
7. No animals other than dogs permitted.
8. No more than 2 dogs per person are permitted.
9. Aggressive dogs, dogs in heat, and dogs that are sick or injured are not permitted.
10. Dogs must be at least 4 months of age, currently licensed with tags and vaccinated for rabies.
11. Barking dogs must be quieted or removed.
12. Caretakers must clean-up after their dogs and put feces and trash in the proper containers.
13. No smoking.
14. No alcoholic beverages, food, or dog treats.
15. No children's toys, strollers, carriages, scooters, skateboards, bicycles, or roller blades.
16. Owner/caretakers must fill holes made by their dogs.
17. Owners/caretakers are liable for injuries or damage caused by their dogs.
18. The leash-free area is subject to closure without notice for maintenance.
19. Dog obedience classes and events other than those authorized by the City of Claremont are prohibited.

Dog Park San Dimas



- ▶ Two enclosures:
 - 0.7-acre (Large Dogs over 25 lbs)
 - 0.4-acre (Small Dogs under 25 lbs)
- ▶ Turf ground cover
- ▶ Hours of Operation: Sunrise to Sunset.
 - Closed Wednesdays from 12:00 p.m. – 2:00 p.m.
 - After heavy rain
- ▶ Amenities
 - Benches
 - Picnic Area
 - Water Fountain
 - Restrooms
- ▶ Population size = 34,064

Dog Park San Dimas



- PARK HOURS - SUNRISE TO SUNSET (M.C. 13.16.190)
- Users Must Keep Their Dogs on Leashes Going To and From the Leash-Free Area.
- Users Must Monitor and Control Their Dogs at All Times.
- No More than 3 Dogs per Person are Allowed in the Park at One Time.
- Dogs Must Never Be Left Unattended.
- Owners Must Clean Up After Their Dogs .
- Dogs Must Have Current Licenses and Vaccinations, and Be Free from Contagious Diseases.
- Dogs Must Wear a Flat Collar with Current Tags Visible. No Pronged, Spiked or Choke Collars Allowed.
- Aggressive Behavior by Dogs is Not Permitted.
- Puppies Under 4 Months of Age Are Not Permitted.
- Spaying/Neutering of Dogs is required.
- Children 12 Years and Under Must Be Closely Supervised by an Adult at All Times. Infants and Toddlers Are Not Recommended.
- Parents Must Ask Permission From the Dog Owner for Children to Play With a Dog.
- No Food or Treats of Any Kind, Dog or Human, are Permitted.
- Excessive Barking is Not Allowed.
- Users Must Fill Holes Made by Their Dogs.
- Commercial/Professional Dog Training is Not Permitted Unless Approved by the City.
- No Animals Other Than Dogs Permitted.
- Users Must Obey All Other Park Rules.
- Smoking, Vaping and Alcohol are Prohibited.
- The City Reserves the Right to Refuse Patron Access.
- The Leash-Free Area is Subject to Closure Without Notice for Maintenance.

Dog Park San Dimas



Wildcatters Dog Park Brea

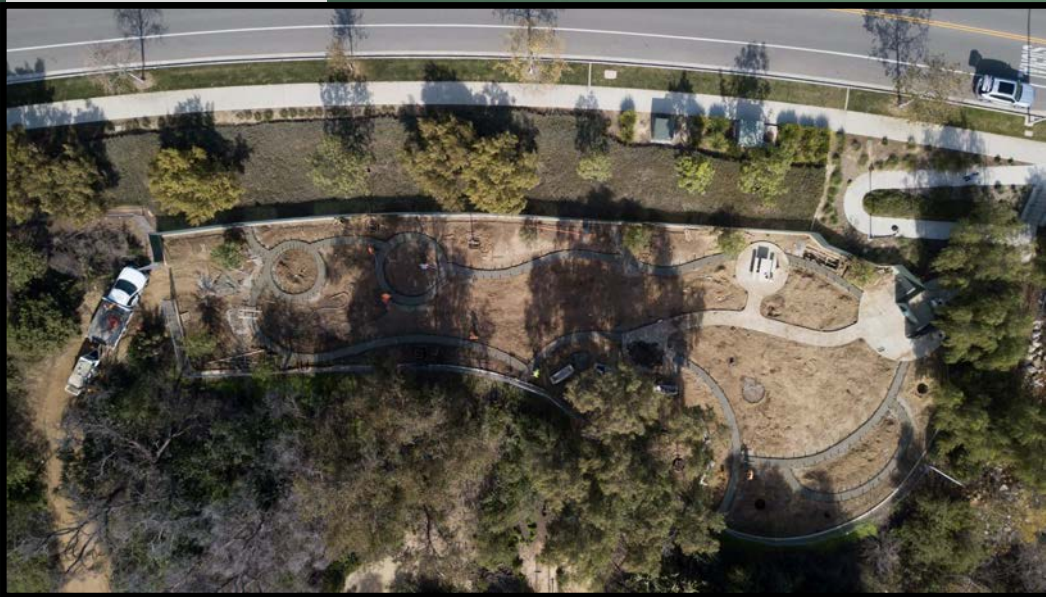


- ▶ Two enclosures:
 - 1.2-acres (Large Dogs over 25 lbs)
 - 0.3-acre (Small Dogs under 25 lbs)
- ▶ Grass turf ground cover
- ▶ Hours of Operation: 7:00 a.m. to Dusk.
 - Closed Thursday from 7:00 a.m. to 12:00 p.m. for maintenance
 - Closed when raining
- ▶ Amenities
 - Shaded Benches
 - Drinking fountains w/ attached dog bowls
 - Picnic tables
 - Dog waste clean up stations (No bags provided)
- ▶ Population size = 47,589

Wildcatters Dog Park Brea



Small Dog Park



Large Dog Park

Potential Concerns to Consider



- ▶ Noise
- ▶ Availability of parking
- ▶ Impact on existing users
- ▶ Traffic
- ▶ Safety
- ▶ Proximity to homes
- ▶ Regional attraction
- ▶ Community Support
- ▶ Environmental concerns
- ▶ Health concerns for both individuals and animals
- ▶ Construction, on-going maintenance, and Staff costs

Next Steps



- ▶ Send out an electronic survey (via Survey Monkey)
- ▶ Host a Community Meeting
- ▶ In-person survey and Community feedback at City Special Events
- ▶ Any other next steps the Commission would like Staff to consider