



***Environmental
Services Guide***

City of Walnut

Table of Contents

Solid Waste/Recycling and Street Sweeping

Solid Waste/Recycling - Valley Vista Services	2
Street Sweeping.....	3
Bulky Item Collection	4

City Environmental Programs

Used Oil & Filter Recycling.....	5
Christmas Tree Recycling.....	6
Electronic Waste Collection/Recycling.....	6
City Trails and Parks	7

Household Hazardous Material Disposal

Household Hazardous Waste Disposal.....	8
-----------------------------------------	---

Pollution Prevention

Storm Drain Pollution Prevention	9-10
Water Pollution Prevention	11
Pet Waste Pick Up Ordinance.....	11

Recycling

Plastic Grocery Bag Recycling.....	12
Beverage Container Recycling.....	12
Cell Phone/Office Supply Recycling.....	13
Composting.....	13

Water Service & Conservation Information

Residential Water Service Providers.....	14
Water Conservation.....	14

Public Transportation Passes

MetroLink and Metro EZ Passes	15
-------------------------------------	----

Environmental Website Links

City/County/State/Federal Websites.....	15
Energy Rebates/Incentives.....	16

Pests and Animals

Pest & Animals: Contact Information	16
Huanglongbing (Citrus Greening) Tree Disease	17
West Nile Virus	18

Solid Waste/Recycling - Valley Vista Services



Valley Vista Services, Inc. has an exclusive franchise contract to provide trash collection and recycling services in the City of Walnut.

Valley Vista Services owns and operates a Materials Recovery Facility which means that all waste collected in Walnut is sorted and separated for recyclable material before going to a landfill. The City also requires that Valley Vista use only alternative fuel trucks for solid waste collection.

Residential trash and recycling is collected once per week in Walnut (Commercial business schedules vary). Valley Vista Services will be closed on the six holidays listed below. **If one of the holidays listed below falls on a Saturday or Sunday, there will be no change in your service day.** If your collection day falls on one of the holidays listed below, your collection will be picked up the next business day. Trash scheduled to be picked up on Friday will be picked up on Saturday. Regular collections will occur on all other holidays not listed below.

- Christmas Day – December 25
- New Year's Day – January 1
- Memorial Day – Last Monday in May
- Independence Day – July 4
- Labor Day – First Monday in September
- Thanksgiving Day – Fourth Thursday in November



Visit Valley Vista Services' website (www.valleyvistaservices.com) for more information.

Please call the Valley Vista Services customer service department if you have any questions or concerns at (800) 442-6454. Their business hours are Monday through Friday: 8:00 am to 5:00 pm and on Saturdays: 8:00 am to 1:00 pm (excluding holidays).

Street Sweeping

City streets and median are swept every other week by Municipal Maintenance Inc. Street sweeping is important because removing debris from gutters and roadsides means less debris goes down storm drains and into our local waterways, causing water pollution.

The City requires that Municipal Maintenance use only alternative fuel trucks for street sweeping activities.

The City's street sweeping program is only part of the solution to water pollution. Residents can help by being aware of how their actions can contribute to or help solve the problem. For instance, over-watering may wash pollutants (such as pesticides, fertilizers, motor oil and yard clippings) from yards into gutters and storm drains. Residents should also keep their cars off the streets during sweep days and be sure their trees/vegetation are not overgrown (this can keep the street sweeper from getting close to the gutter).

Street Sweeping Days by General Area:

Monday (generally Northwest Walnut)

Tuesday (generally South Walnut)

Wednesday (generally Central Walnut - areas near Lemon Ave)

Thursday (generally Southeast Walnut)

Friday (generally Northeast Walnut)

To view Street Sweeping Area maps and the current street sweeping schedule, visit www.ci.walnut.ca.us (Keyword search "Sweeping").

Please call Municipal Maintenance at (626) 934-0476 if you have any questions or concerns regarding street sweeping in the City of Walnut.



Bulky Item Collection

Valley Vista Services provides unlimited, on-call bulky item collection service to City of Walnut residents at no additional charge. Each resident must call Valley Vista at (800) 442-6454 in advance of their regularly scheduled collection day and schedule a special collection of large bulky items.



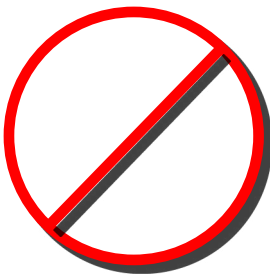
Please note the prohibited items listed below. Prohibited items will not be picked up and it will be the homeowner's responsibility to remove and properly dispose of such items. For information on disposal of household hazardous waste, please call (888) CLEANLA (888-253-2652).



Acceptable Items for Bulky Pick-Up

- Items must be able to be lifted by only two people
- Tires (no wheels, rims, commercial sized truck/tractor tires)
- Furniture
- Appliances
- Lumber, small quantity (no construction projects)
- Bundled and tied vegetative trimmings (less than 4 feet long)
- Electronics such as televisions, computers, electronic devices
- Other household items

Prohibited Items for Pick-Up



- Construction and demolition debris
- Concrete/Masonry
- Rebar
- Roofing Materials
- Bricks
- Broken Asphalt
- Auto Parts
- Household Hazardous Waste
- Rocks
- Sod/Dirt

Used Oil & Filter Recycling

Did you know that motor oil never wears out? It does get dirty, but it can be recycled, cleaned, and used again!

Recycling used motor oil conserves a natural resource. As much as 2 quarts of re-refined oil can be produced from one gallon of used oil. It takes less energy to produce a gallon of re-refined motor oil than to produce the same amount from crude oil.



Recycling used oil is also good for the environment. Motor oil poured onto the ground or into storm drains, or tossed into trash cans (even in a sealed container) can contaminate and pollute the soil, groundwater, streams, and rivers.

Oil filters can also be recycled. They are made from steel and after they are removed from a vehicle, they still can contain up to 45 percent used motor oil in weight – oil that can and should be recycled. When you take your used oil and used oil filters to a Certified Collection Center for recycling, you are protecting the environment and conserving a valuable resource.

On-Going Used Oil and Oil Filter Recycling

Residents who take uncontaminated used oil and oil filters in secured, non-leaking containers to one of the certified Used Oil Collection Centers in Walnut (listed below) are eligible to receive a 4-cent per quart of used oil rebate from the collection center.

Residents are limited to a maximum of 5 gallons per visit. Walnut residents may pick up free used oil containers and used oil filter containers at the Maintenance and Recreation Facility at 21701 E. Valley Blvd. (proof of residency required).

The current Certified Used Oil Collection Centers in Walnut are:

- Firestone Tires 860 N. Nogales Street, (626) 965-2224
- The Oilmen, 856 N. Nogales Street, (626) 965-4798
- O'Reilly Auto Parts (formerly Kragen), 18724 Amar Road, (626) 965-6012
- Mobil Xpress Lube, 762 N. Nogales Street, (626) 965-6032

(Please call ahead for hours of operation. Used oil can only be dropped off during working hours.)



Christmas Tree Recycling

Walnut residents may recycle their live holiday trees by using the **free Christmas Tree Recycling Program** sponsored by the LA County Sanitation Districts in conjunction with Valley Vista Services. Flocked or fire retardant trees will be accepted.

The program generally runs between Christmas and the first week in January. Please visit the City of Walnut website (www.ci.walnut.ca.us, Keyword "Christmas") for exact dates. During the collection dates, Valley Vista Services will pick up Christmas tree curbside on your regular trash day; if you follow a few basic rules.

- All trees must have the following items removed:
- Plastic or metal watering containers
- Plastic or metal stands
- Ornaments and other decorations
- The majority of tinsel



After this service has ended, trees must be cut to fit into your regular green waste container (with the lid closed). Call Valley Vista Services at (800) 442-6454 for more information.

Electronic Waste Recycling

It is illegal to dispose of Electronic Waste in your trash.

However, thanks to Valley Vista Services, the City of Walnut can offer curbside E-Waste collection for the residents of Walnut at no additional charge to their current monthly fee. Walnut residents may call Valley Vista Services at (800) 442-6454 for a pick up.

Examples of Electronic Waste: Batteries, lamp bulbs and fluorescent tubes, computers/monitors, televisions, radios, telephones, cell phones, keyboards, cables, routers, microwave ovens, fans, printers (non-commercial units only), VCR's, CD players, stereos, speakers, fax machines, copiers (non-commercial desk top units), toasters, curling irons, CD-ROM's, etc.

For more information on household hazardous waste disposal, call (888) CLEANLA (888-253-2652) or visit www.CLEANLA.com.

City Trails and Parks

Trails

There are 26 miles of equestrian/hiking trails winding through Walnut's rolling hills. The scenic, rolling natural topography provides an idea place for riding, mountain bike riding, and hiking. The City maintains 19 miles of the trail system. The City's trails connect to seven miles of County of Los Angeles trails for a total of 26 miles.



Parks

The City of Walnut Parks system includes eleven parks with 90 total acres of maintained facilities. To help residents keep our parks clean, there are trash cans, recycling containers and pet waste stations located within each park. The convenient location of the parks allows residents to have a recreational area near their

neighborhood to enjoy a picnic, celebrate a birthday party or just relax with family or friends.

Walnut residents may reserve Snow Creek, Creekside, Lemon Creek, or Suzanne Park by visiting the Parks and Recreation department at least one week in advance. Reservations for parties include tables and grills and are on a first come first served basis. The City does not allow moon bounces or carnival rides in any park. Reservations of 150 or more must be approved by the Parks and Recreation Commission and should be made at least four weeks in advance. Parks may not be reserved for major holidays.

Please note: Section 17-25.1(b)(11) of the Walnut Municipal Code prohibits the taking of any bird, animal, fish or other aquatic life from City Creeks on City Property, which includes City Parks. "Take" is defined as hunt, seize, pursue, catch, capture, or kill, or attempt to hunt, pursue, catch, capture or kill.

Visit the City website (www.ci.walnut.ca.us) for a City Park Guide, a Park Reservation Form or a Hiking/Equestrian Trail Map.

Trail/Park Clean Up Program

Service and community organizations interested in helping maintain Walnut's parks or trails by volunteering to clean up trash and debris may contact the City of Walnut Parks and Maintenance Department at (909) 598-5605.

Household Hazardous Waste



Products deemed hazardous to people and the environment must be separated from the regular trash and collected for safe disposal.

To help you properly dispose of such items, the County of Los Angeles offers free county-wide Household Hazardous Waste collections throughout

LA County almost every weekend.

Residents can find out the latest scheduled roundups, or obtain information by going online to www.CLEANLA.com or by calling either the Los Angeles County Department of Public Works at (888) CLEAN LA (888-253-2652) or the Sanitation Districts of Los Angeles County at (888) 238-0172 .

The roundups are always on Saturdays, from 9:00 am to 3:00 pm, rain or shine. **Please use these roundups to properly dispose of the following hazardous items:**

- Paint, cleaners/solvents, and fertilizers.
- “Sharps” (which are defined as hypodermic needles, pen needles, intravenous needles, lancets, and other devices that are used to penetrate the skin for the delivery of medications).
- Thermostats, thermometers and novelty items: Thermometers, greeting cards that play music, shoes with lighted soles, and certain maze games contain mercury.
- Pilot light sensors, electric switches, barometers, blood pressure devices, stoves, ovens, water heaters, space heaters, clothes dryers, and furnaces frequently use mercury switches.
- Aerosol cans: Flammable propellants such as butane can remain in aerosol cans if not completely empty. If a can is marked “flammable” or “toxic,” it should not be tossed into the trash unless it is completely empty of all contents.



Storm Drain Pollution Prevention

The City of Walnut is committed to reducing the impact of pollutants from urban runoff through our Storm Water Pollution Prevention Program.

The storm drain system is comprised of gutters and storm drains which are designed to prevent flooding by moving rain water away from City streets and directly into local rivers (which flow to the ocean).

Storm water pollution occurs because rainwater and urban runoff (such as irrigation) pick up pollutants as they flow across urban surfaces and carry them into the storm drain system. The water in this system is not treated or filtered, which means any pollutants in the water goes directly into the rivers and to the ocean.

Common sources of storm water pollution include litter, trash, pet waste, paint residue, organic material (yard waste), fertilizers, pesticides, sediments, construction debris, cooking grease, and illegally dumped motor oil and other harmful fluids. Many of these pollutants come from every day activities and can be easily reduced by using common sense and good housekeeping practices. Good housekeeping measures used to reduce storm water pollution are referred to as Best Management Practices, or BMPs.

Certain activities, such as construction and renovation, may require a permit from the City of Walnut. Aspects of such permits may include BMP requirements to minimize water run-off and reduce the potential for storm water pollution.

**For more information on draining your pool, which construction activities may require a permit, or any other storm water related questions, please contact:
Walnut City Hall - Building and Safety Department
Phone: (909) 595-7543**

County of Los Angeles maintains a 24-hour toll free water pollution reporting hotline: (888) CLEANLA.

To report serious spills emergencies (chemical/gas), call 911

Storm Drain Pollution Prevention

Frequently Asked Questions

1. Are sewers and storm drains the same thing?

Sewers and storm drains are not the same thing. Sewers collect wastewater from indoor plumbing, such as toilets, sinks, washing machines, and floor drains.

A municipal sewer system includes the collection, treatment, and disposal of sewage water. **A municipal storm water system only transports water for flood control purposes; no treatment of storm water occurs before it is discharged to local water bodies.**



2. How do I drain my swimming pool?

There are two LA County Codes which define the legal method by which swimming pool or spa water may be disposed: Ord. 2007-0110 § 7 (part), 2007 & Ord. 99-0042 § 38 (part), 1999. **Due to pollution and run-off concerns, the discharge of any such water (including water from filter and pool equipment cleaning) into the street or storm drain system is generally prohibited.**

The best way to drain swimming pool water is into the municipal sewer system (see question #1 for an explanation of this system). In-ground pools typically have a sanitary sewer drainage inlet near the pool equipment. Pools and spas that not plumbed with a sanitary sewer drainage inlet can be drained to a sanitary sewer line plumbed to the home.

This applies to **rinsing your pool filter** as well. This may only be done if the water drains to a sewer system. Some people rinse the filter in their bathtub.

Consult a licensed plumber or pool professional if you are unsure how to go about properly draining your pool.

3. If yard clippings and leaves are natural, why are they considered pollutants?

As yard clippings and leaves decompose, they deplete water of dissolved oxygen that aquatic species, including fish and turtles, need to survive. Excessive plant material also encourages algae growth. Additionally, contaminants such as dog waste, fertilizers, and oil from road dirt can adhere organic material so that when they get washed into the storm drains, so do the contaminants.

Water Pollution Prevention



Pet waste, litter, fertilizers and other pollutants on our streets and sidewalks can be washed into the gutter by water from rain, sprinklers, or hoses. This pollution flows through the storm drain system and directly into the ocean. We can all help reduce this water pollution by remembering:

- To not litter (every little piece counts)
- To pick up and properly dispose of **pet waste** (*see below*)
- To clean your driveway/sidewalk with a broom not a hose
- To buy environmentally safe household and garden products
- To properly dispose of used oil, antifreeze, paints, solvents, cleaners, pesticides, chemicals and fertilizers at a household hazardous materials collection site call (888) CLEANLA

Pet Waste Pick Up Ordinance



Picking up after your dog in public places is required of pet owners by Los Angeles County Code (Title 10 Animals, Chapter 10.40.060, B.).

Why? Because animal waste contains disease-causing pathogens and harmful elements. When left on the ground or in a park, such waste may be washed into streets/storm drains and contaminate local waterways and beaches. Not picking up after your pet is not only discourteous it is also unhealthy for the entire community!

For the convenience of residents, the City of Walnut has installed pet waste stations at all City parks and at many trail heads. These stations come equipped with biodegradable waste bags and a waste deposit basket.



Plastic Grocery Bag Recycling



Consumers can return clean, dry, empty plastic grocery bags in designated collection bins at participating grocery stores or recycling centers. Please be sure plastic bags are clean, dry and that you have removed any receipts.

Please note, plastic bags may NOT be recycled if they:

- Contain any other bag, material or waste
- Have had direct contact with food, organic material or waste
- Have been taped, glued, or painted

These are considered contaminants and they make the plastic bag illegible to be returned to the grocery store for recycling.

The following grocery stores in Walnut accept plastic grocery bags:

- Stater Bros Markets: 20677 Amar Rd, Walnut, CA 91789
- Vons: 350 N Lemon Ave, Walnut, CA 91789

Beverage Container Recycling

Almost every bottle and can you use can be recycled. Look at the label for the universal recycle symbol and such words as “CA CASH REFUND” or “CA CRV.” Containers with these markings can go in your curbside recycling bin and are also accepted at recycling centers.

There is one State Certified Beverage Recycling Collection Center in the City of Walnut:

rePLANET LLC (CertID: RCI56438.001)

18730 Amar Rd., Walnut, CA 91789

Website: www.replanetusa.com

Tel: (877) 737-5263 (*Call ahead for hours of operation*)



For more information on Beverage Container Recycling, go to the State’s CalRecycle website (www.calrecycle.ca.gov/BevContainer/Consumers/Recycle101.htm).

Cell Phones & Office Supply Recycling

The following Walnut store accepts used cell phones and office supplies:

Staples

21555 Valley Blvd, Walnut
(909) 594-6379

Accepts: Rechargeable batteries, ink & toner, and office & personal electronics (including cell phones, desktop and laptop computers, and digital cameras)



Composting



Residential yard waste adds to our landfills and diminishes their capacity. However, yard trimmings and kitchen waste can be valuable resources to compost and nurture our own backyards.

When you compost you will conserve water and energy, save time and money, improve your yard and garden, recycle yard waste and kitchen scraps, reduce waste going to our landfills, and help preserve the environment. Composting does not take much time, and it will help you develop healthy and beautiful lawns and gardens to enjoy.

To learn about composting or sign up for a free workshop, visit Los Angeles County's SmartGardening website at: www.SmartGardening.com or call (888) CLEANLA.

The City of Walnut also hosts an annual composting workshop each Spring. Call (909) 598-5605 for more information.

Water Service Providers

Walnut residents are serviced by one of three water companies (based on geographic location). Check with your service provider for ways to save water and money.

Walnut Valley Water District

(909) 595-7554 (www.wvwd.com)

Suburban Water Systems

(626) 543-2640 (www.suburbanwatersystems.com)

Golden State Water Company

(800) 999-4033 (www.aswater.com)

Water Conservation

California's water situation remains serious, so here's a few suggestions on how you can save water and make a difference!

Indoors - What you can do:

- Turn off the water when you brush your teeth
- Fix leaky faucets
- Wash only full loads of laundry

Outdoors - What you can do:

- Water yard before 8:00 am to reduce evaporation
- Install a smart sprinkler controller
- Regularly check your sprinkler system for leaks
- Use mulch around plants to reduce evaporation



Water Conservation/Information Websites

Earth 911:

www.earth911.org

Water Education Water Awareness Committee

www.usewaterwisely.com

CA Department of Water

www.water.ca.gov

Be Water Wise

www.bewaterwise.com

Metrolink & Metro EZ Passes

The City of Walnut encourages our residents to help reduce air pollution and traffic congestion by taking public transportation.

Metrolink Pass: Metrolink monthly passes for the Riverside Line (Industry Station on Brea Canyon Road to Los Angeles Union Station) are sold at a discounted rate to City of Walnut residents (must live within the actual City boundaries, not just have a Walnut zip code). Passes can be purchased at City Hall (21201 La Puente Rd.), Monday through Thursday from 7:00 am to 6:00 pm at the rate of \$184.25 for an Adult monthly pass and \$133.25 for Senior/Disabled monthly pass (Proof of residency, age or disability required).

Metro EZ Pass: The EZ Transit Pass, good for unlimited travel on 22 transit agencies throughout Los Angeles County, including Foothill Transit, can now be purchased at Walnut City Hall (21201 La Puente Rd.), Monday through Thursday from 7:00 am to 6:00 pm. Payment by cash or check only.

Environmental Websites

CITY OF WALNUT

Go Green With Walnut
www.ci.walnut.ca.us ("Go Green")

LA COUNTY/LOCAL

Sanitation Districts of LA County
www.lacsd.org

CLEAN-LA
www.dpw.lacounty.gov/epd/cleanla/

Southern CA Edison
www.sce.com

The Gas Company
www.socalgas.com

LA Smart Gardening (Composting)
www.smartgardening.com

Air Quality Management District
www.aqmd.gov

STATE

CalRecycle
www.calrecycle.ca.gov

CA Environmental Protection Agency
www.calepa.ca.gov

CA Department of Conservation
www.conservation.ca.gov/Index/Pages/Index.aspx

CA Department of Water Resources
www.water.ca.gov

FEDERAL

Environmental Protection Agency
www.epa.gov

Department of Energy
www.energy.gov

Energy Rebates & Incentives

The Gas Company

www.socalgas.com/for-your-home/rebates

Southern California Edison

www.sce.com/residential/rebates-savings/rebates-savings.htm

California Solar Initiative (Edison)

www.sce.com/solarleadership/gosolar/california-solar-initiative/default.htm

Energy Upgrade California

www.energyupgradeca.org/county/los_angeles/overview

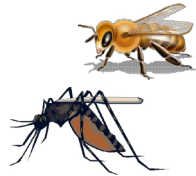
Pests & Animals

San Gabriel Valley Vector Control

(Pests, Mosquitoes, West Nile Virus, Bees, Fire Ants)

www.sgvmosquito.org

(626) 814-9466



LA County Department of Animal Care & Control

(Dogs, Cats, Wild Animals)

www.animalcare.lacounty.gov

Living with Wild Animals (CA Fish and Game)

www.dfg.ca.gov/keepmewild/index.html



Inland Valley Humane Society

500 Humane Way, Pomona, CA 91766. (909) 623-9777

www.ivhsspca.org

Endangered Species and Other Wildlife Information



CA Department of Fish and Game

www.dfg.ca.gov

US Fish and Wildlife Services

www.fws.gov

Huanglongbing Tree Disease



Asian Citrus Psyllid

The citrus tree disease Huanglongbing (HLB), or Citrus Greening, which is spread by the Asian Citrus Psyllid pest, has been detected near in Hacienda Heights. As a result, the California Department of Food and Agriculture has put in place a **citrus quarantine zone which**

includes areas in the City of Walnut west of Grand Ave.

For more information, and to find out what to look for, visit www.CaliforniaCitrusThreat.org.

The disease is bacterial and attacks the vascular system of plants.

IT IS NOT A THREAT TO HUMANS OR ANIMALS. The

bacteria is spread as the pest feeds on citrus trees and other plants. Once a tree is infected, there is no cure; it typically declines and dies within a few years.

WHAT TO DO: The best way to protect citrus trees from the disease is to control the psyllid population.

- Inspect citrus trees for signs of the pest and disease each month or whenever watering, spraying, pruning or tending trees.
- Call the California Department of Food & Agriculture hotline at (800) 491-1899 if any suspicious pests or symptoms of HLB are found.
- Don't bring any plant material into California from other states or countries and don't move citrus plants out of quarantined areas, because they might be carrying psyllids or be infected with HLB.
- Only buy citrus trees from reputable, licensed California nurseries.
- Dry or double bag plant clippings before placing in green waste recycle bins to avoid moving psyllids and HLB-infected plant material.
- Cooperate with agriculture officials on detection and suppression efforts of the psyllid and HLB.



Infected Citrus Tree

West Nile Virus

The San Gabriel Valley Mosquito and Vector Control District continues to caution residents about the risk of West Nile Virus (WNV) in the San Gabriel Valley.



Asian Tiger Mosquito

Residents can continue to enjoy the outdoors as usual, yet are reminded that if you are outdoors between dusk and dawn, you are advised to wear a long sleeve shirt and pants and to apply an effective mosquito repellent according to the label.

The San Gabriel Valley Mosquito and Vector Control District asks all area residents to remain vigilant and survey their property for any standing water and eliminate it promptly.

Additionally, residents are encouraged to report any dead birds to the California West Nile Hotline at (877) WNV-BIRD (877-968-2473) or online at www.westnile.ca.gov (this website shows all reported occurrences of dead birds, as well as reported equine and human cases of West Nile Virus).

The San Gabriel Valley Mosquito and Vector Control District website (www.sgymosquito.org) contains an abundance of information on West Nile Virus and other “Vectors” (a term which generally refers to, but is not limited to, mosquitoes, flies, other insects, ticks, mites, and rats capable of transmitting human disease or discomfort).



Crane Fly

Are you seeing “GIANT” mosquitoes? Good news - those are not mosquitoes, but a close relative - the crane fly. Crane flies do not bite nor transmit disease. They only live a short time as adults and do serve as an important food source for birds. If they get inside the house, just take them back outside.



City of Walnut
Environmental Services
(909) 598-5605
www.ci.walnut.ca.us
Keywords: "Go Green"