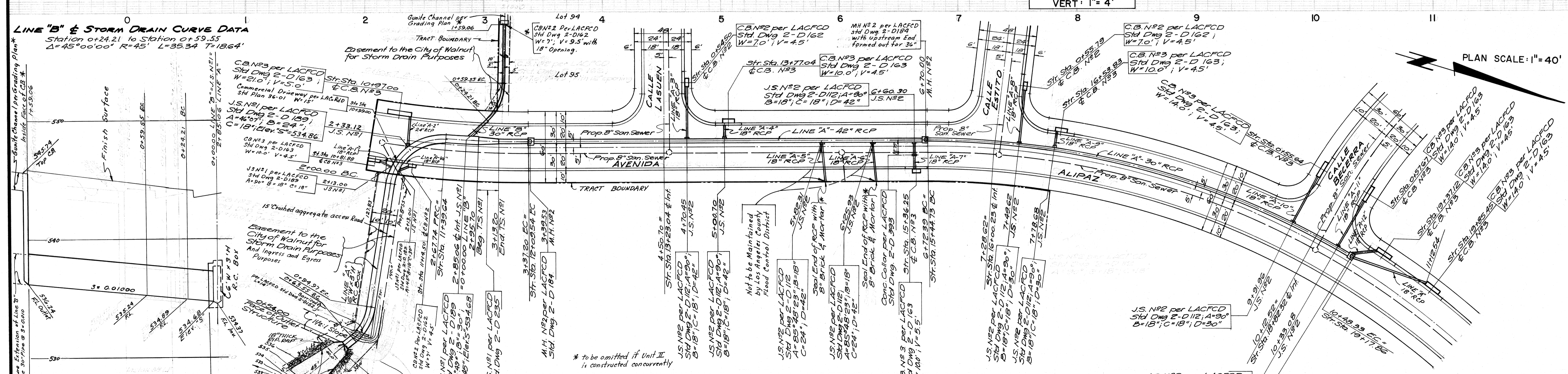
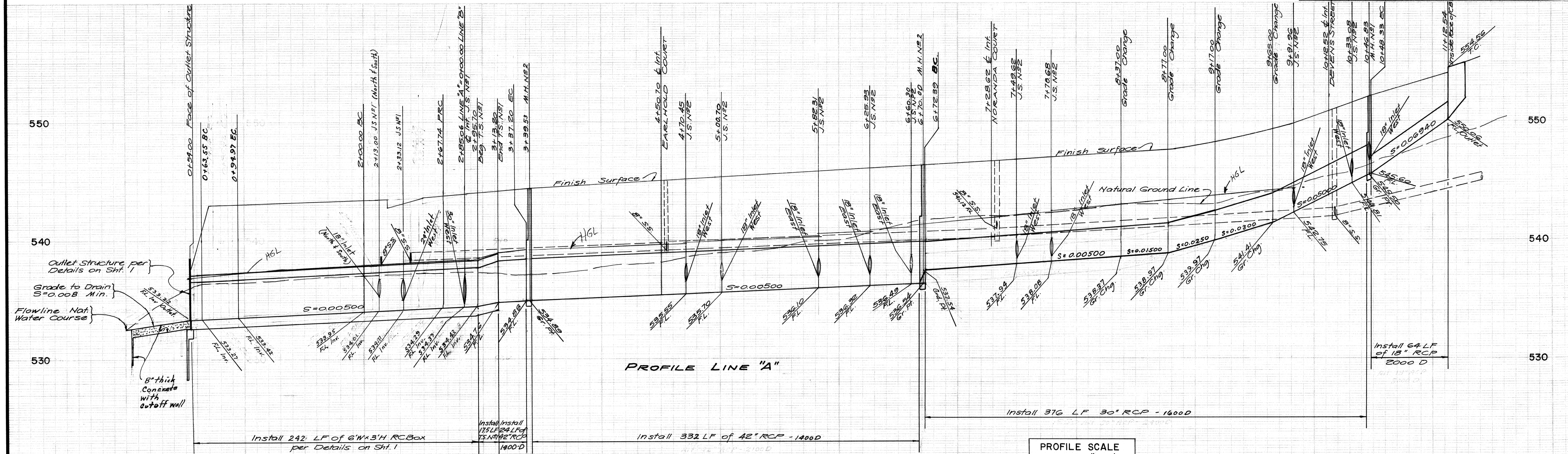


STORM DRAIN PLANS IN TRACT No. 31378 M.T.D. 483



LINE "B" & STORM DRAIN CURVE DATA
 Station at 24.21 to Station at 59.53
 $\Delta = 45^\circ 00' 00''$ $R = 45'$ $L = 35.34$ $T = 18.64'$

LINE "A" & STORM DRAIN CURVE DATA

Station to Station	Δ	R	L	T
0+63.55 to 0+94.97	40° 00' 00"	45'	31.42'	16.38'
2+00.00 to 2+67.74	86° 14' 45"	45'	62.74'	42.14'
2+67.74 to 3+37.20	5° 00' 23"	795'	69.46'	34.76'
6+72.39 to 10+46.83	32° 11' 49"	669'	376.94'	193.05'

NOTE: For Profiles Lines A-1; A-1a; A-2; A-3; A-4; A-5; A-6; A-7; A-8; A-9; A-10; A-11; A-12 See Sheet 3

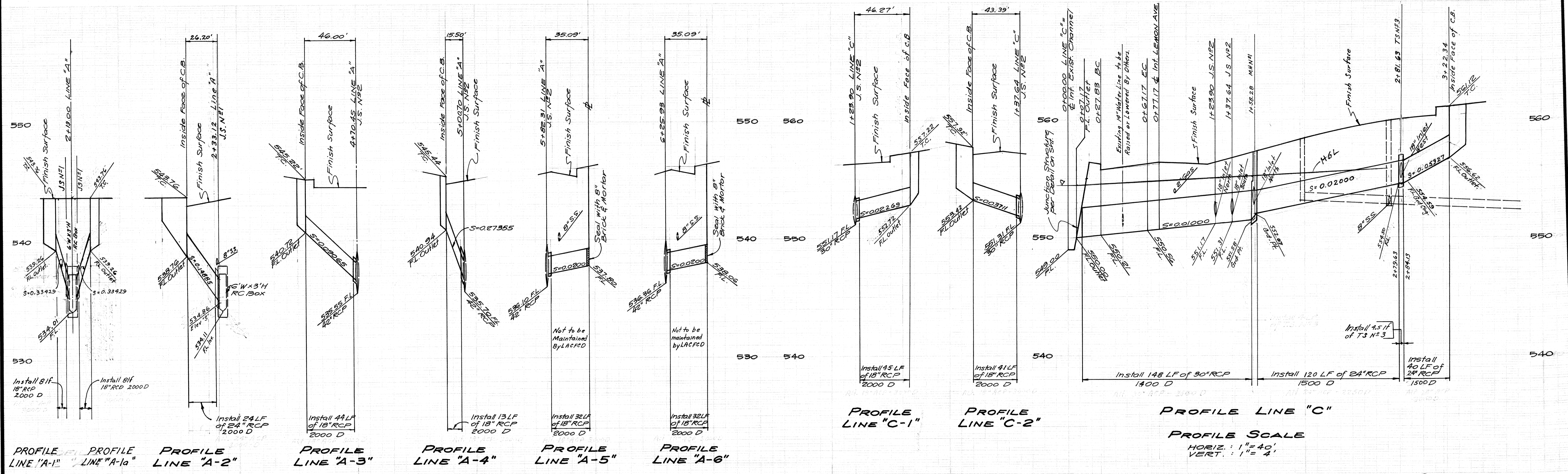
NOTE: Catch Basins shall have Local Depression No. 9 per LACFCD Std Dwg. 2-0415 with H=2"

LIND & HILLERUD, INC.
 2100 HUNTINGTON DRIVE
 SAN MARINO, CALIFORNIA 91108
 (213) 576-1654
 BY: WESLEY R. LIND
 SIGNATURE: *Wesley R. Lind* R.C.E. No. 16362

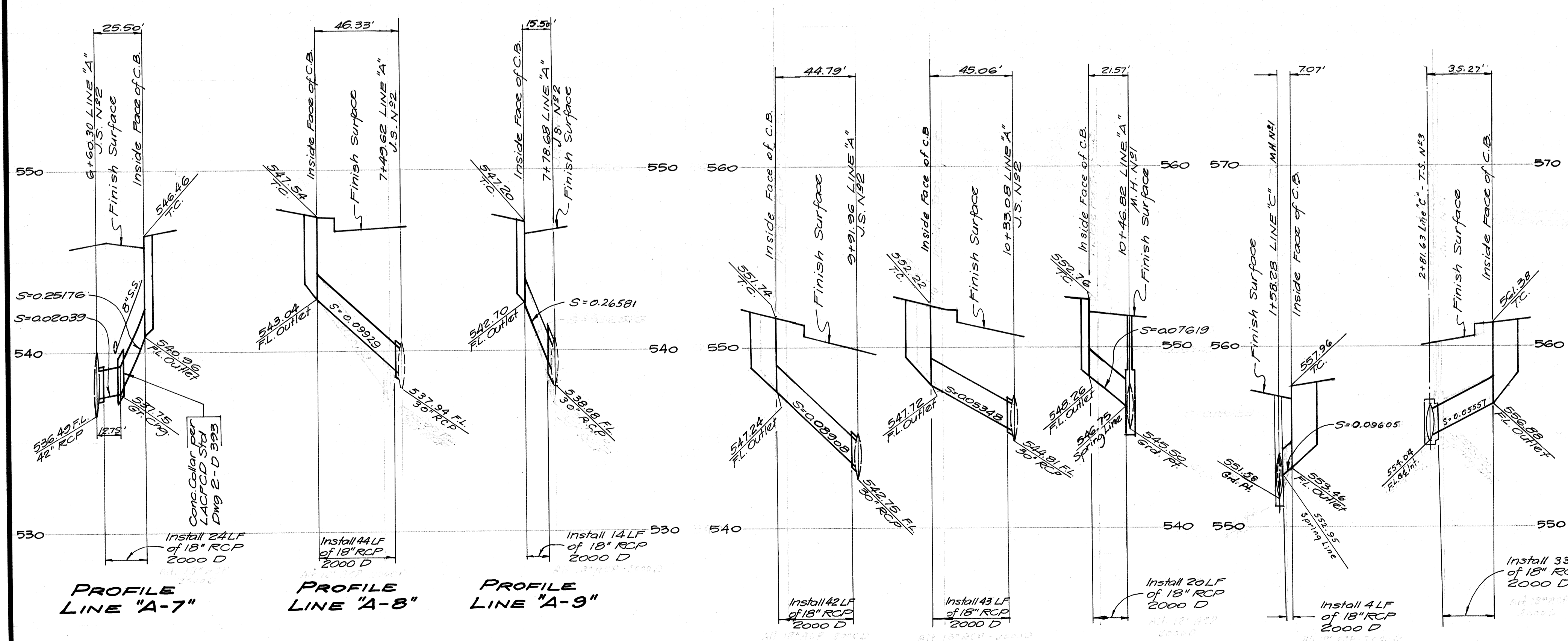
CITY OF WALNUT, GELES, CALIFORNIA
 JOHN A. LAMBIE
 W.P.D. 103
 CHECKED BY: *Ray A. Schmitt* R.C.E. No. 15920 DATE: 4/18/73
 OFFICE OF CITY ENGINEER

AS BUILT

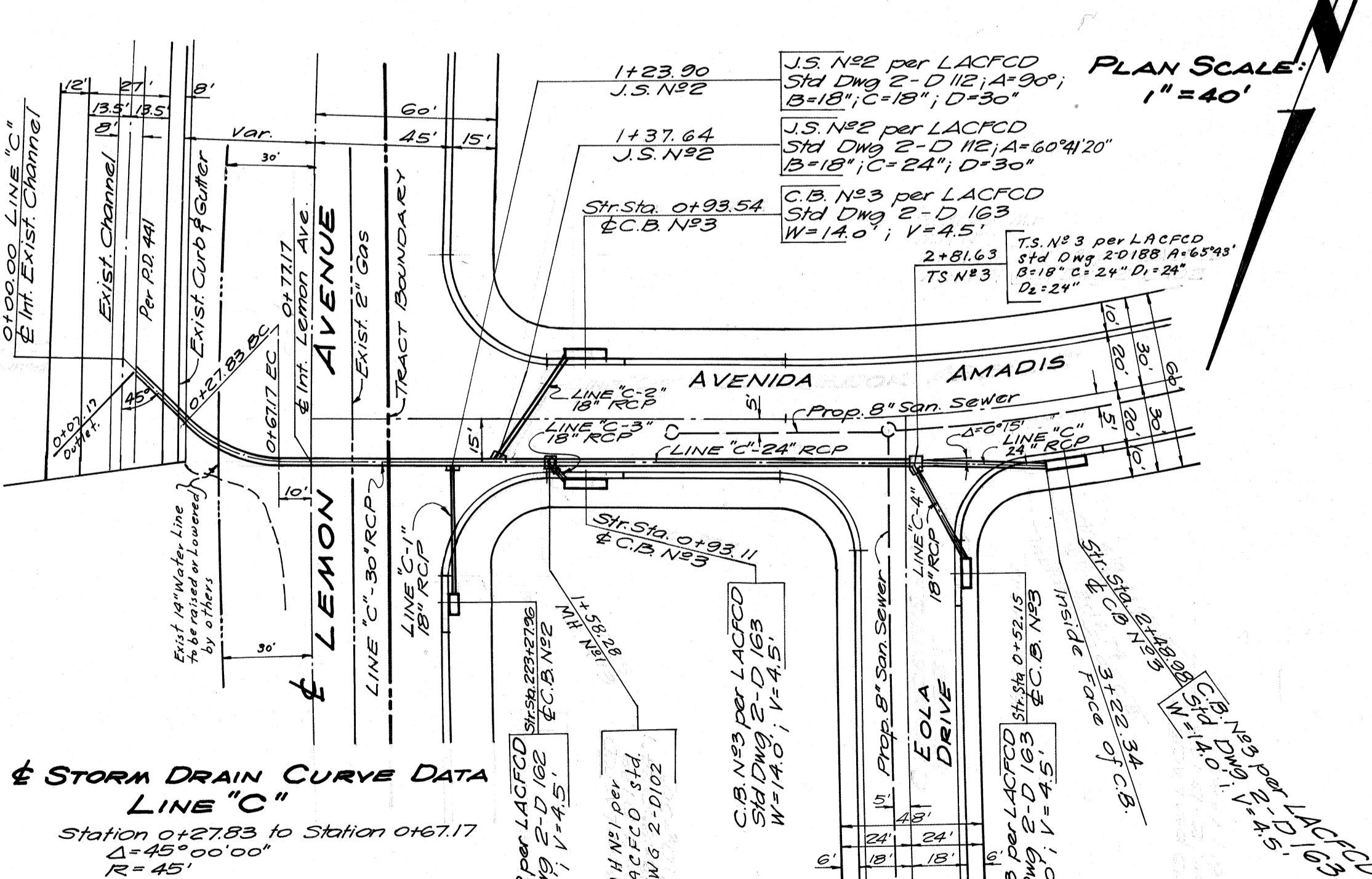
STORM DRAIN PLANS IN
TRACT No. 31378 M.T.D. 483



PROFILE LINE "A-1" PROFILE LINE "A-2" PROFILE LINE "A-3" PROFILE LINE "A-4" PROFILE LINE "A-5" PROFILE LINE "A-6" PROFILE LINE "C-1" PROFILE LINE "C-2" PROFILE SCALE
HORIZ: 1" = 40'
VERT: 1" = 4'



PROFILE LINE "A-7" PROFILE LINE "A-8" PROFILE LINE "A-9" PROFILE LINE "A-10" PROFILE LINE "A-11" PROFILE LINE "A-12" PROFILE LINE "C-3"



STORM DRAIN CURVE DATA
LINE "C"
Station 0+27.83 to Station 0+67.17
 $\Delta = 49.3417$
 $R = 45'$
 $L = 35.34'$
 $T = 18.64'$

AS BUILT

LIND & HILLERUD, INC.
2100 HUNTINGTON DRIVE
SAN MARINO, CALIFORNIA 91108
(213) 576-1654
BY: WESLEY R. LIND

CITY OF WALNUT, ANGELES, CALIFORNIA
W.P.D. 103
CHECKED BY: [Signature] R.C.E. NO. 15398 DATE: 4/18/73
OFFICE OF CITY ENGINEER

E01.PAIN

1060