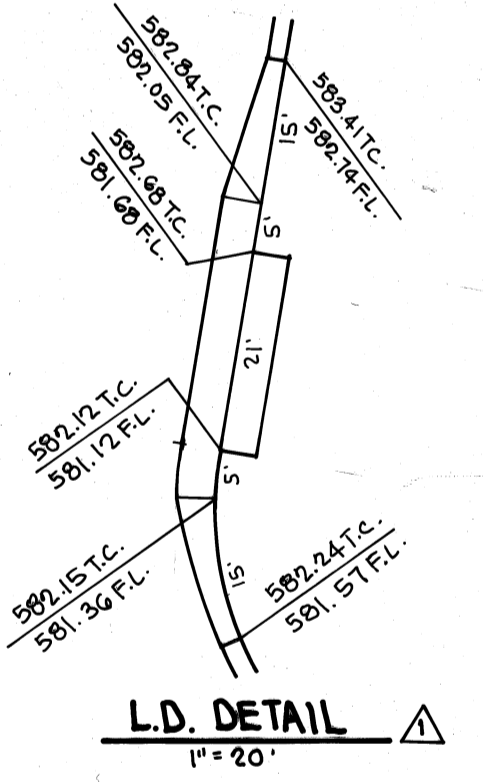
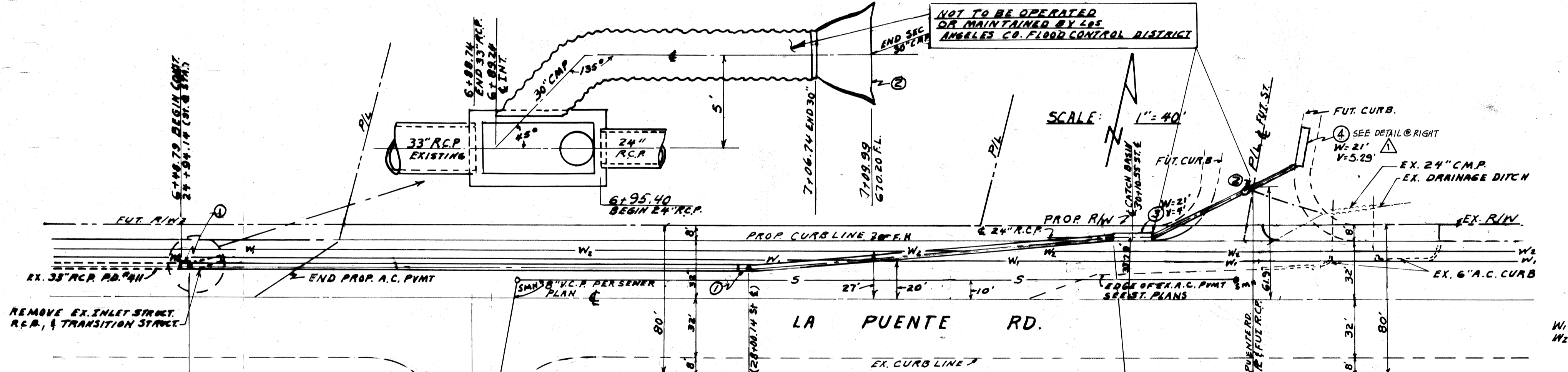


PROFILE SCALE
 HORIZ: 1" = 40'
 VERT: 1" = 4'

AS BUILT

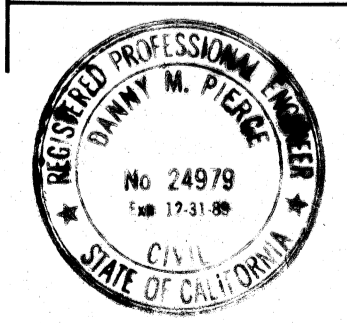


LEGEND
 W₁ - EX. 27\"/>

NOTE

THE ENGINEER HAS INVESTIGATED ALL AVAILABLE RECORDS OF THE CITY AND THE UTILITY COMPANIES INVOLVED AND ALL KNOWN SUBSTRUCTURES ARE SHOWN HEREON. IT SHALL BE THE RESPONSIBILITY OF THE CONTRACTOR TO LOCATE ALL SUBSTRUCTURES, WHETHER SHOWN HEREON OR NOT, AND TO PROTECT THEM FROM DAMAGE. THE CONTRACTOR SHALL BEAR THE TOTAL EXPENSE OF REPAIR OR REPLACEMENT OF SAID SUBSTRUCTURES DAMAGED BY HIS OPERATIONS IN CONNECTION WITH THE PROSECUTION OF SAID WORK.

BENCHMARK: B.G. 3417 ELEV. 588.012
 RD. B.M. TAG IN CURB 33' N. & LA PUENTE RD.
 4' EAST OF END CURB 60' EAST & DRIVEWAY
 TO HOUSE NO. 20505, COVINA QUAD. 1870



EXTENDED STORM DRAIN CONSTRUCTION AT THE EASTERLY END

GENERAL NOTES FOR STORM DRAIN CONSTRUCTION

- ALL PIPE LAID IN OPEN TRENCH SHALL BE BEDDED IN ACCORDANCE WITH L.A. COUNTY ENGINEER CASE 14 BEDDING PER STD. 54.
- 24 HOURS PRIOR TO CONSTRUCTION THE CONTRACTOR SHALL NOTIFY THE LOS ANGELES COUNTY FLOOD CONTROL DISTRICT AREA INSPECTOR AT 223-2111; EXT. 24211.
- ALL WORK SHALL CONFORM TO THE REQUIREMENTS OF THE STANDARD SPECIFICATIONS FOR PUBLIC WORKS CONSTRUCTION (1970 EDITION), INCLUDING ALL AMENDMENTS ADOPTED THEREO PRIOR TO THE DATE OF APPROVAL OF PLANS, AND TO SATISFACTION OF THE CITY ENGINEER.
- BEFORE WORK COMMENCES, THE CONTRACTOR MUST OBTAIN A PERMIT TO EXCAVATE IN CITY STREETS FROM THE CITY ENGINEER.
- ALL BACKFILL SHALL BE COMPACTED TO A RELATIVE DENSITY OF 90%.
- ALL STATE AND LOCAL TRENCH SAFETY RULES WILL BE RIGIDLY ENFORCED.
- THE CONTRACTOR MUST MAINTAIN ALL TRAFFIC SIGNS IN AN ERECT, READILY DISCRIBIBLE POSITION AND FREE FROM OBSTRUCTIONS TO MOTORIST'S VISION, AND SHALL RESET SAME IN THE PROPER POSITION UPON COMPLETION OF CONSTRUCTION.
- STORM DRAINS CROSSING UTILITIES SHALL BE SUPPORTED PER 2-D173, AS DIRECTED BY THE CITY ENGINEER.
- R.C.P. SHALL BE MANUFACTURED AND INSPECTED IN ACCORDANCE WITH SECT. 207-2.7, 2.8, 2.9, OF THE STANDARD SPECIF.
- CONTRACTOR SHALL FURNISH A LETTER OF CERTIFICATION FROM PIPE MANUFACTURER AS TO TEST RESULTS OF PIPE INSTALLED.
- ALL PIPE LENGTHS SHOWN ARE HORIZONTAL PROJECTIONS, UNLESS OTHERWISE NOTED.
- ALL REINFORCED CONCRETE SHALL HAVE ULTIMATE STRENGTH OF 4000 PSI (COMP)

- CONSTRUCTION NOTES
- CONSTRUCT MANHOLE NO. 1 PER L.A.C.R.D. STD. 2-D102.
 - CONSTRUCT INLET NO. 1 - CASE 2 PER L.A.C.R.D. STD. 2-D265
 - CONSTRUCT CATCH BASIN NO. 2 PER L.A.C.R.D. STD. 2-D163; SEE PLAN FOR 'W' & 'V' DIMENSIONS. LOCAL DEPRESSION NO. 4 PER 2-D415.
 - CONSTRUCT CATCH BASIN NO. 3 PER L.A.C.R.D. STD. 2-D163, W=21', V=5.29' WITH LOCAL DEPRESSION NO. 2 PER L.A.C.R.D. STD. 48-02

HYDRAULIC DATA					
PIPE SIZE	LOCATION	Q ₁₀ (CFS)	S _{Full}	V ₁₀ (FPS)	N
33"	EXISTING	570	.00162	9.6	.013
24"	6+53.79 TO 11+28.79	200	.0078	6.37	.013

PLANS PREPARED BY:
 GLENN D. WARD
 20829 CIENEGA AVENUE
 COVINA, CALIF. 91724
 (213) 332-9843

Signature: *Glenn D. Ward* 11/27 3/20/72
 RCE DATE

MTD # 431

CITY OF WALNUT
 STORM DRAIN
 MISCELLANEOUS TRANSFER DRAIN NO. 431
 LA PUENTE RD - FROM STA. 6+88.74 TO STA. 12+74.17
 W.P.D. 102

REVISION PREPARED BY:
 G.V.W. ENGINEERING, INC.
 667 BREA CANYON ROAD, SUITE 27
 WALNUT, CA. 91789 (714) 594-0552

CITY OF WALNUT
 CITY ENGINEER
 APPROVAL OF REVISION
 RONALD L. KRANZER RCE 18503

Signature: *Danny M. Pierce* JUNE 3, 1988
 DANNY M. PIERCE RCE 24979 DATE

Signature: *Jack Istik* 6/7/88
 JACK ISTIK RCE 26558 DATE

DATE MAY 1972	SUBMITTED <i>Glenn D. Ward</i>	SHEET NO.
SCALE AS SHOWN	DATE May 26 1972	1 OF 1
DESIGN G.D.W.	APPROVED <i>Ronald L. Kranzer</i>	
DRAWN G.D.W.	DATE 9-18-72	
CHECKED	CITY ENGINEER	