

PROFILE SCALE
HORIZ. : 1" = 40'
VERT. : 1" = 4'

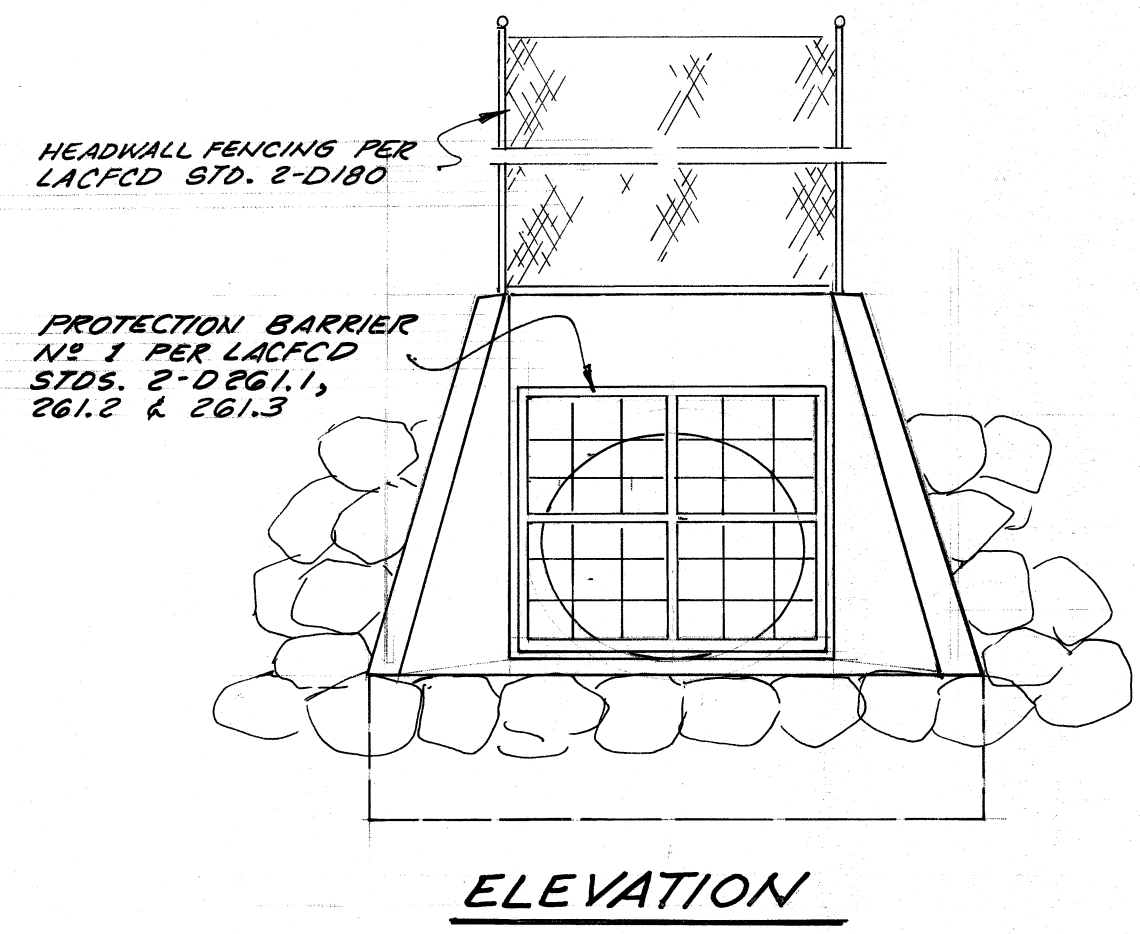
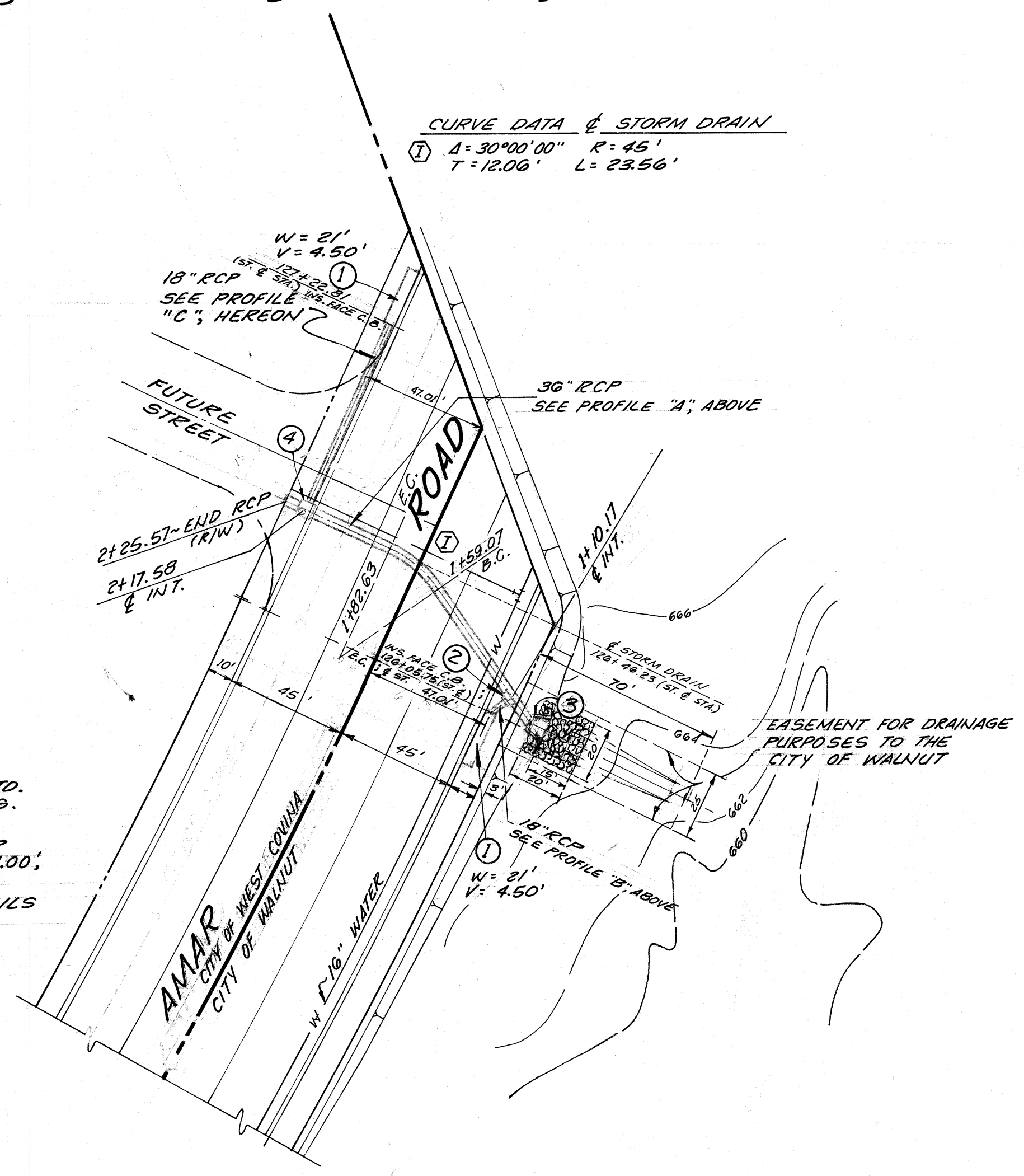
CURVE DATA & STORM DRAIN
① A: 30°00'00" R=45' T=12.00' L=23.56'

SCALE: 1" = 40'

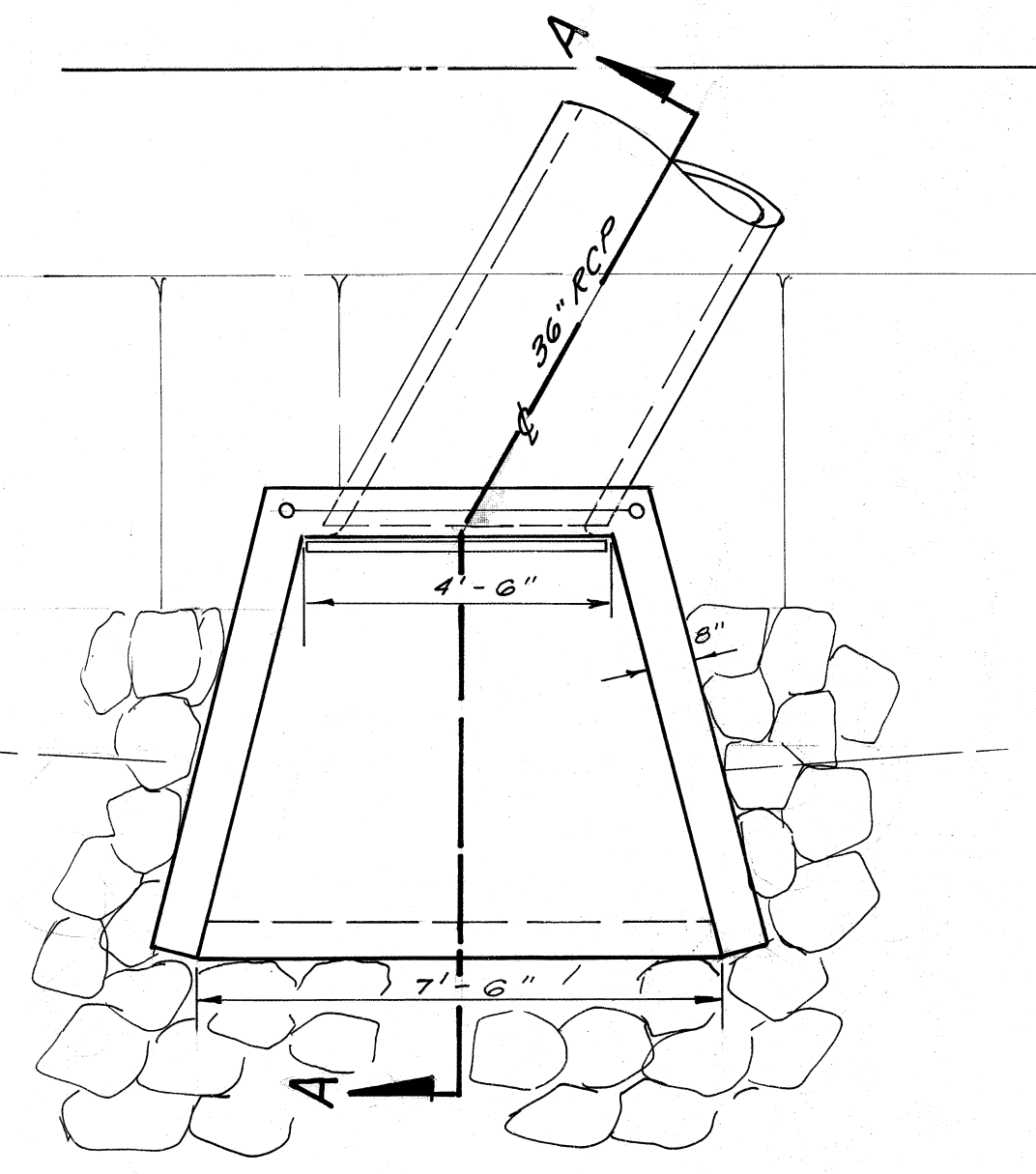
HYDRAULIC ELEMENTS						
STA. TO STA.	SIZE	Q (cfs)	V	T	V	T
A 1100.00 1101.17	36"	89.8	0.1778	12.0	0.03	
A 1101.17 2117.58	36"	84.7	0.1618	11.3	0.03	
A 2117.58 2125.57	36"	80.0	0.1443	11.3	0.03	
B 1101.17 C.B.	18"	4.1	0.0152	2.3	0.03	
C 2117.58 C.B.	18"	4.7	0.0200	10.0	0.03	

CONSTRUCTION NOTES

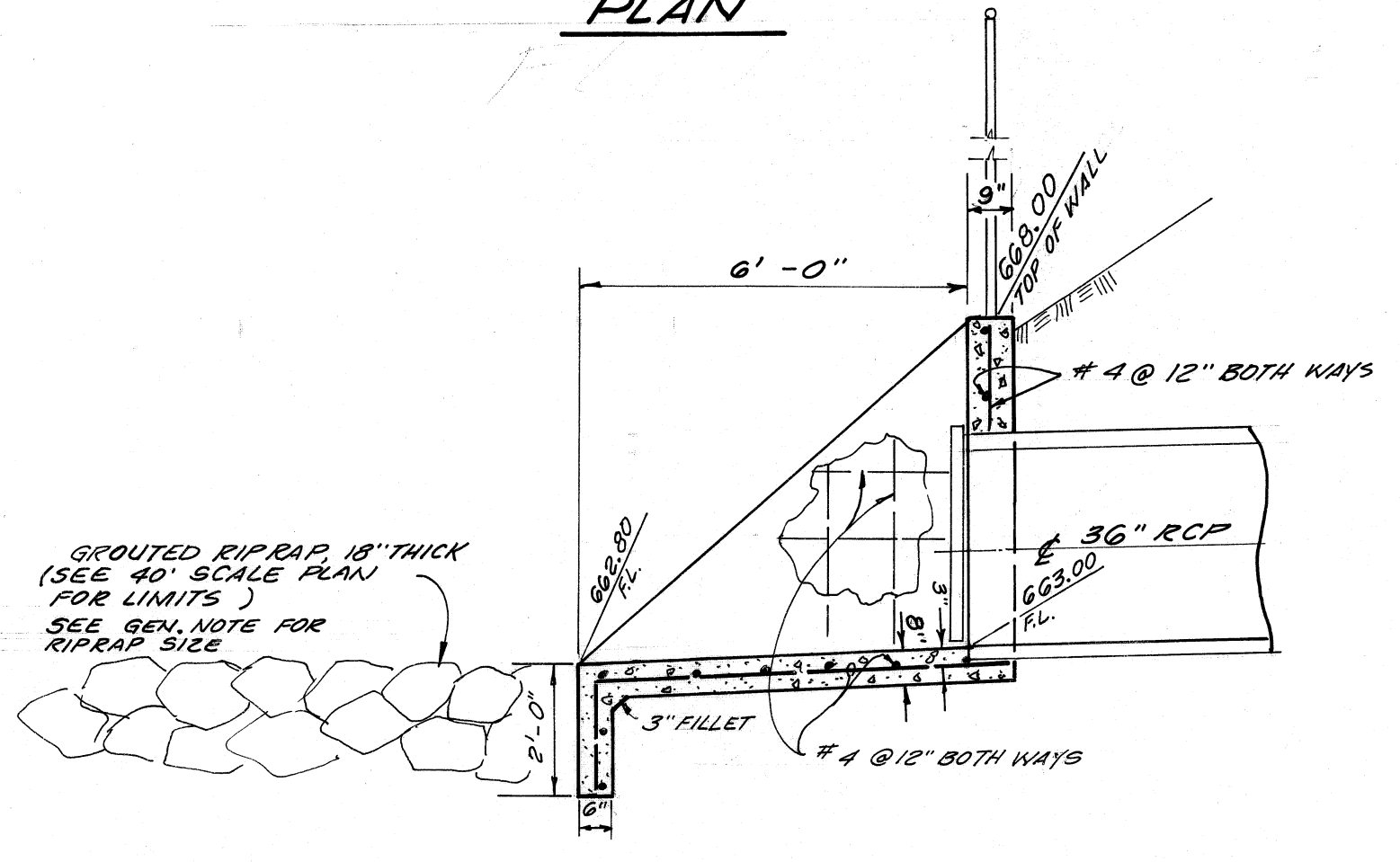
- CONSTRUCT CATCH BASIN NO 3 PER LACFCD STD. 2-D183; SEE PLAN FOR "W" AND "V" DIMENSIONS. LOCAL DEPRESSION NO 4 PER STD. 2-D145.
- CONSTRUCT JUNCTION STRUCTURE NO 2 PER LACFCD STD. 2-D112; A=30", B=18", C=1.00', D=36"
- CONSTRUCT OUTLET STRUCTURE PER DETAILS AT RIGHT HEREON.
- CONSTRUCT MANHOLE NO 2 PER LACFCD STD. 2-D184.



ELEVATION



PLAN



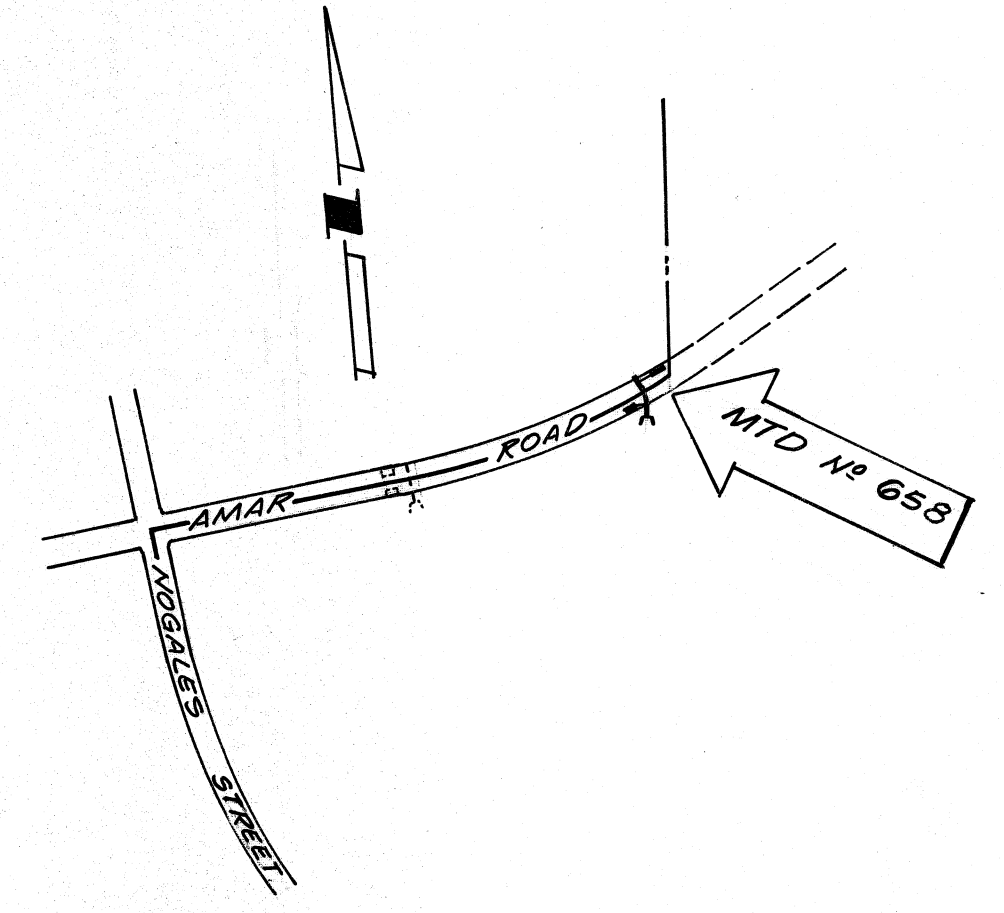
SECTION A-A

OUTLET STRUCTURE DETAILS

SCALE: 3/8" = 1'-0"

GENERAL NOTES FOR STORM DRAIN CONSTRUCTION

- ALL PIPE LAID IN OPEN TRENCH SHALL BE BEDDED IN ACCORDANCE WITH LOS ANGELES COUNTY ENGINEER CASE AND BEDDING PER STD. NO. D-54.
- 24 HOURS PRIOR TO CONSTRUCTION, THE CONTRACTOR SHALL NOTIFY THE LOS ANGELES COUNTY FLOOD CONTROL DISTRICT INSPECTOR AT (213) 226-4206, AND WALNUT CITY ENGINEER @ (909) 865-1229.
- ALL WORK SHALL CONFORM TO THE REQUIREMENTS OF THE STANDARD SPECIFICATIONS FOR PUBLIC WORKS CONSTRUCTION (1976 EDITION), INCLUDING ALL AMENDMENTS ADOPTED THERE TO PRIOR TO THE DATE OF APPROVAL OF THESE RULES, AND TO THE SATISFACTION OF THE CITY ENGINEER.
- BEFORE WORK COMMENCES, THE CONTRACTOR MUST OBTAIN A PERMIT FROM THE CITY ENGINEER TO EXCAVATE IN CITY STREETS. THE PERMIT WILL BE ISSUED WITHOUT FEE.
- ALL BACKFILL SHALL BE COMPACTED TO A RELATIVE DENSITY OF 90%.
- ALL STATE AND LOCAL TRENCH SAFETY RULES WILL BE RIGIDLY ENFORCED.
- THE CONTRACTOR MUST MAINTAIN ALL TRAFFIC SIGNS IN AN ERECT, READILY DISCOVERABLE POSITION, FREE FROM OBSTRUCTIONS TO MOTORIST'S VISION, AND SHALL RESET SAME IN THE PROPER POSITION UPON COMPLETION OF CONSTRUCTION.
- ANY EXISTING UTILITIES CROSSING THE STORM DRAIN SHALL BE SUPPORTED PER STD. NO. 2-D173, AS DIRECTED BY THE CITY ENGINEER.
- R.C.P. SHALL BE MANUFACTURED AND INSPECTED IN ACCORDANCE WITH SECTION 207-2.1, 2.2 AND 2.3 OF THE STANDARD SPECIFICATIONS.
- THE CONTRACTOR SHALL FURNISH A LETTER OF CERTIFICATION FROM THE PIPE MANUFACTURER AS TO TEST RESULTS OF THE PIPE INSTALLED.
- ALL PIPE LENGTHS SHOWN ARE HORIZONTAL PROJECTIONS, UNLESS NOTED OTHERWISE.
- THE ENGINEER, V.T.H., HAS INVESTIGATED ALL AVAILABLE RECORDS OF THE CITY AND OF THE OTHER PUBLIC UTILITIES INVOLVED, AND ALL KNOWN SUBSTRUCTURES ARE SHOWN HEREON. IT SHALL BE THE RESPONSIBILITY OF THE CONTRACTOR TO LOCATE ALL SUBSTRUCTURES, WHETHER SHOWN HEREON OR NOT, AND TO PROTECT THEM FROM DAMAGE. THE CONTRACTOR SHALL BEAR THE TOTAL EXPENSE OF REPAIR OR REPLACEMENT OF ANY SAID SUBSTRUCTURES DAMAGED BY HIS OPERATIONS IN CONNECTION WITH THE PROSECUTION OF SAID WORK.
- ELEVATIONS ARE IN FEET ABOVE U.S.C. & G.S. MEAN SEA LEVEL DATUM OF 1929.
- THIS STORM DRAIN WILL NOT BE ACCEPTED FOR MAINTENANCE UNTIL THE STREETS HAVE BEEN PAVED, MANHOLES BROUGHT UP TO GRADE, AND THE SYSTEM CLEANED TO THE SATISFACTION OF THE CITY ENGINEER.
- THE CONTRACTOR'S ATTENTION IS DIRECTED TO SECTION 7-10.4.1 OF THE STANDARD SPECIFICATIONS FOR PUBLIC WORKS CONSTRUCTION IN REGARD TO SAFETY ORDERS.
- THE CONTRACTOR SHALL CONFORM TO THE "MINIMUM PUBLIC SAFETY REQUIREMENTS" AS SHOWN ON LOS ANGELES COUNTY ENGINEER STANDARD S-2.
- ALL CONCRETE SHALL BE 3,000 POUNDS PER SQUARE INCH PORTLAND CEMENT CONCRETE, UNLESS OTHERWISE SPECIFIED.
- FINISH ALL EXPOSED EDGES WITH 3/4 INCH CHAMFERED.
- REINFORCEMENT SHALL BE DEFORMED BARS OF INTERMEDIATE GRADE STEEL IN ACCORDANCE WITH ASTM A-615.
- ROCK FOR GROUTED RIPRAP SHALL BE GOOD QUALITY BROKEN CONCRETE AND/OR RIVER RUN ROCK. THE SMALLEST DIMENSION SHALL EXCEED 3 INCHES AND THE LARGEST DIMENSION SHALL NOT EXCEED 18 INCHES. THE LARGEST DIMENSION SHALL NOT EXCEED 4 TIMES THE SMALLEST DIMENSION.
- THERE SHALL BE A GRAVEL BED OF AT LEAST 2 INCHES BENEATH THE FIRST LAYER OF ROCK. ALL THE VOIDS BETWEEN THE ROCKS SHALL BE FILLED WITH GROUT. MAXIMUM SPACING BETWEEN ROCKS SHALL BE 2 INCHES.
- SURFACE ROCKS SHALL BE EMBEDDED FROM 1/2 TO 2/3 THEIR MAXIMUM DIMENSION.



LOCATION MAP
NO SCALE

LIST OF STANDARD DRAWINGS

L.A. COUNTY ENGINEER STD.	
CATCH BASIN NO 3	2-D183
LOCAL DEPRESSION NO 4	2-D145
JUNCTION STR. NO 2	2-D112
CATCH BASIN OPENING	2-D232
C.B. REINFORCING	2-D172
C.B. REIN. (FOR ROUND M.H.)	2-D157
STD. DRAIN STEP	2-D186
M.H. FRAME & COVER (FOR C.B.)	2-D169
PROTECTION BAR	2-D175
PROTECTION BAR STIRRUP	2-D264
PROTECTION BARRIER	2-D261, 2, 3
SEWER PROTECTION	2-D251
MANHOLE NO 2	2-D184
HEADWALL FENCING	2-D180
C.B. CONNECTION	2-D224
M.H. FRAME & COVER	2-D427

BENCHMARK DATA NO. 1372
C.S. MON. IN WELL AT INT. OF AMAR ROAD AND
PASS AND COVINA ROAD
1968 ELEV. 426.871

**STORM DRAIN
MISCELLANEOUS
TRANSFER DRAIN NO 658**

CITY OF WALNUT
APPROVED: *Frank W. Saff* 8/30/76
DATE

PREPARED IN THE OFFICES OF:
Marvin P. [Signature] 6-30-76
DATE

APPROVED BY:
B.L. AS SHOWN
B.L. AS SHOWN
N.J.D. & J.M.G.
Harry Wilton 8-12-76
185-71
7000

Note: This project primarily administered by City of West Covina. West Covina has FCD Green Sheet & handled transfer to FCD for Maintenance FWS 7/1/78