

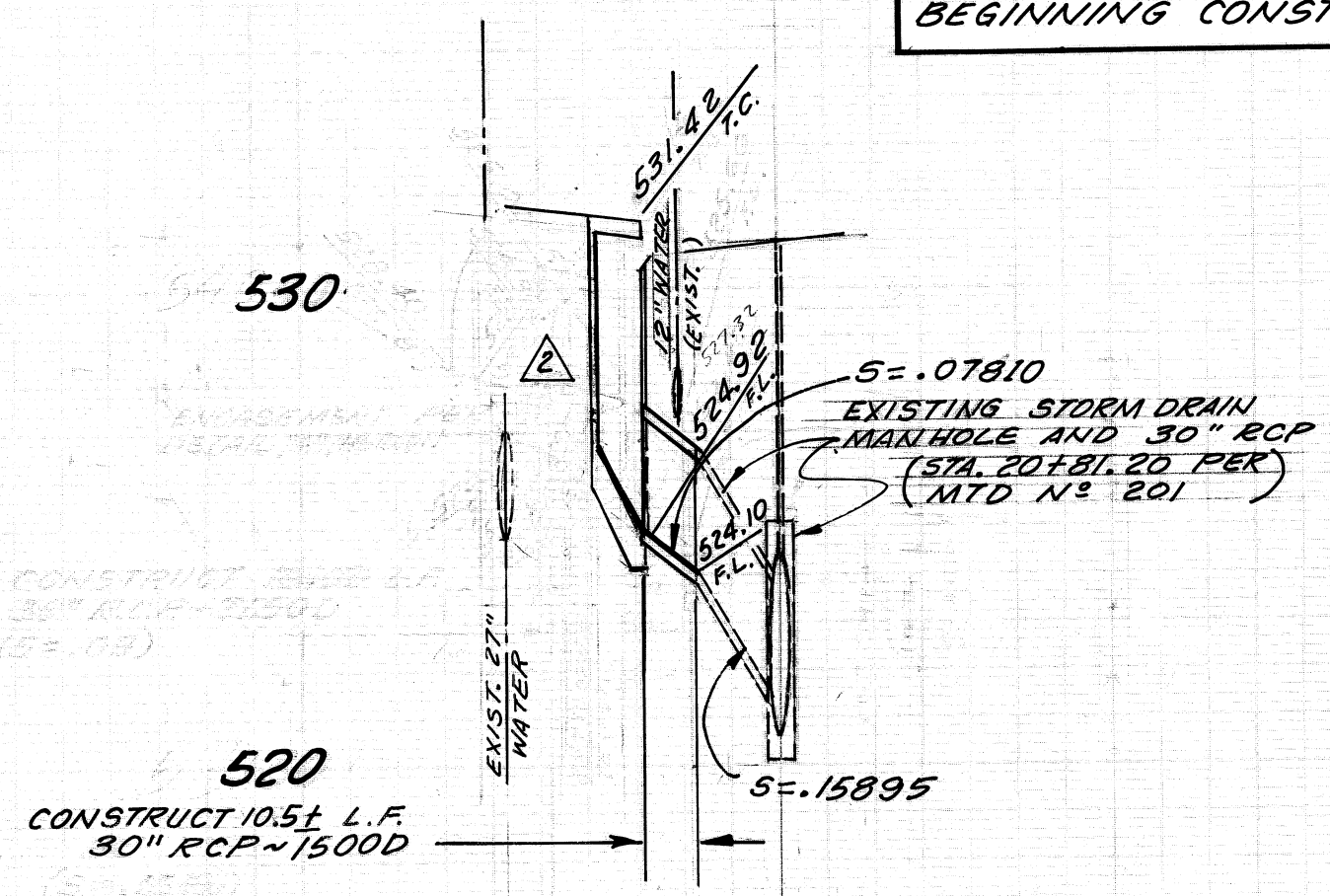
**GENERAL NOTES FOR STORM DRAIN CONSTRUCTION**

1. ALL PIPE LAID IN OPEN TRENCH SHALL BE BEDDED IN ACCORDANCE WITH L.A. COUNTY ENGINEER CASE AND BEDDING PER STD. D-54.
2. APPLICATION FOR INSPECTION BY THE CITY OF WALNUT SHALL BE MADE BY THE CONTRACTOR AT LEAST 24 HOURS BEFORE THE SERVICES THEREOF WILL BE REQUIRED. PHONE 714-595-7543.
3. 24 HOURS PRIOR TO CONSTRUCTION, THE CONTRACTOR SHALL NOTIFY THE LOS ANGELES COUNTY FLOOD CONTROL DISTRICT INSPECTOR AT 213-223-2111, EXT. 74211.
4. ALL WORK SHALL CONFORM TO THE REQUIREMENTS OF THE STANDARD SPECIFICATIONS FOR PUBLIC WORKS CONSTRUCTION (1973 ED. AND 1974 SUPPLEMENT).
5. ALL BACKFILL SHALL BE COMPACTED TO A RELATIVE DENSITY OF 90%.
6. ALL STATE AND LOCAL TRENCH SAFETY RULES WILL BE RIGIDLY ENFORCED.
7. THE CONTRACTOR MUST MAINTAIN ALL TRAFFIC SIGNS IN AN UPRIGHT, READILY DISCOVERABLE POSITION AND FREE FROM OBSTRUCTIONS TO MOTORIST'S VISION, AND SHALL RESET SAME IN THE PROPER POSITION UPON COMPLETION OF CONSTRUCTION.
8. EXISTING UTILITIES CROSSING STORM DRAIN SHALL BE SUPPORTED PER 2-D173 OR AS DIRECTED BY THE CITY ENGINEER.
9. R.C.P. SHALL BE MANUFACTURED AND INSPECTED IN ACCORDANCE WITH SECTION 207-2.1, 2.8 & 2.9 OF STANDARD SPECIFICATIONS.
10. CONTRACTOR SHALL FURNISH A LETTER OF CERTIFICATION FROM THE PIPE MANUFACTURER AS TO TEST RESULTS OF PIPE INSTALLED.
11. ALL PIPE LENGTHS SHOWN ARE HORIZONTAL PROJECTIONS, UNLESS OTHERWISE NOTED.
12. THE ENGINEER, V.T.N., HAS INVESTIGATED ALL AVAILABLE RECORDS OF THE CITY AND OF THE UTILITY COMPANIES INVOLVED, AND ALL KNOWN SUBSTRUCTURES HEREIN SHOWN HEREOF, IT SHALL BE THE RESPONSIBILITY OF THE CONTRACTOR TO LOCATE ALL SUBSTRUCTURES, WHETHER SHOWN OR NOT, AND TO PROTECT THEM FROM DAMAGE. THE CONTRACTOR SHALL BEAR THE TOTAL EXPENSE OF REPAIR OR REPLACEMENT OF SAID SUBSTRUCTURES DAMAGED BY HIS OPERATIONS IN CONNECTION WITH THE PROSECUTION OF SAID WORK.
13. ALL CONCRETE SHALL HAVE A 28 DAY COMPRESSIVE STRENGTH OF 4000 P.S.I.
14. ALL REINFORCING STEEL SHALL CONFORM TO A.S.T.M. A-615-GRD. 60.
15. THE INSPECTOR MAY HAVE THE OPTION TO REQUIRE CONCRETE BACKFILL DURING CONSTRUCTION WHEN THE PIPE HAS LESS THAN ONE FOOT OF COVER. THE CONCRETE BACKFILL SHALL CONSIST OF 1:3:5 MIX P.C.C. POURED FROM WALL TO WALL OF TRENCH AND FROM BOTTOM OF TRENCH TO A MINIMUM DEPTH OF 4" OVER TOP OF PIPE.
16. ELEVATIONS ARE IN FEET ABOVE U.S.C. & G.S. MEAN SEA LEVEL.

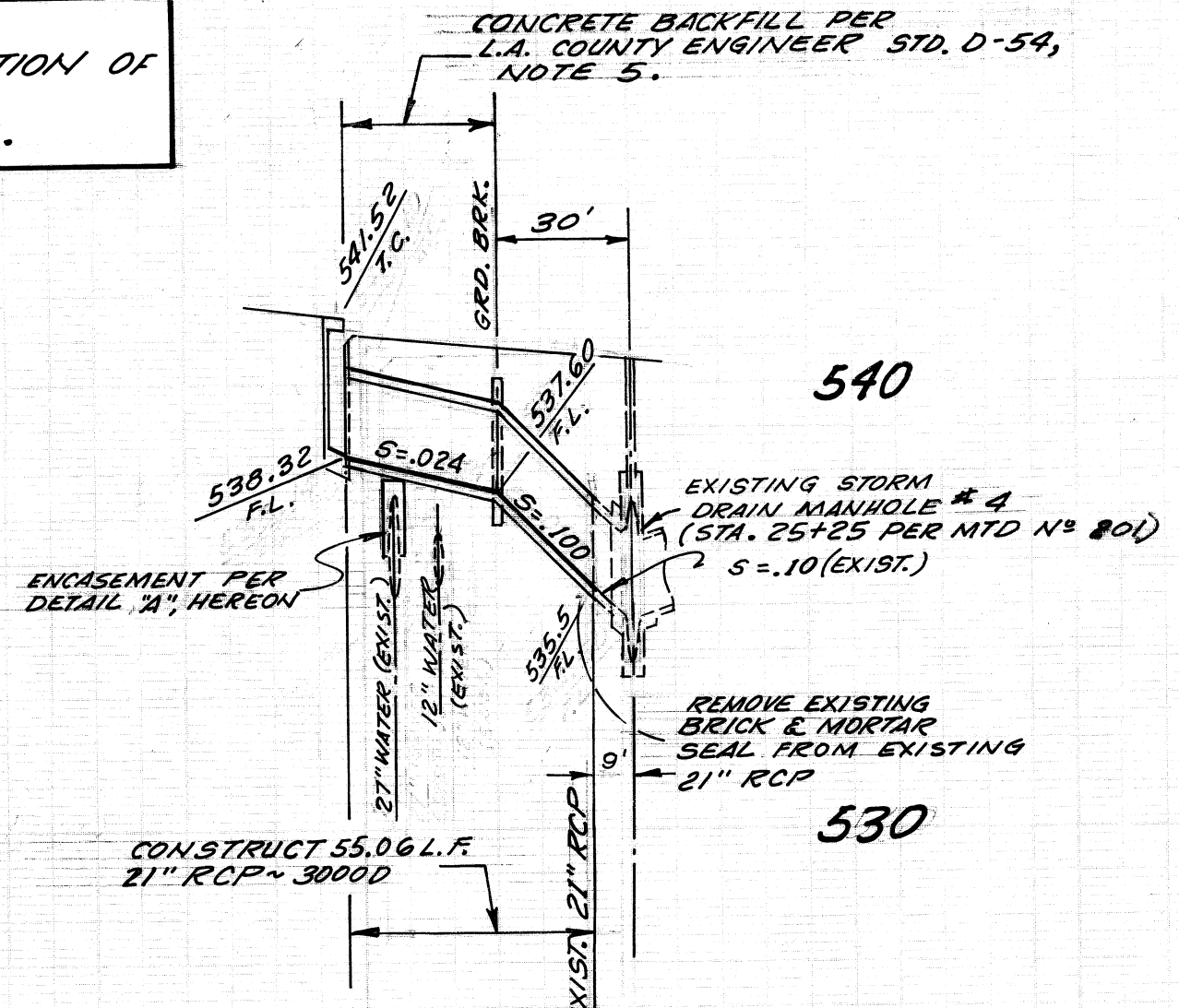
**CONCRETE AND REINFORCEMENT NOTES**

1. DIMENSIONS ARE FROM FACE OF CONCRETE TO CENTER OF REINFORCING BARS, UNLESS OTHERWISE SPECIFIED.
2. ALL STEEL SHOWN ADJACENT TO A CONCRETE FACE SHALL BE PLACED 2 1/2 INCHES FROM THE CONCRETE FACE UNLESS OTHERWISE SHOWN.
3. LONGITUDINAL STEEL SHALL BE CONTINUOUS AND EXTEND THROUGH ALL CONSTRUCTION JOINTS EXCEPT TRANSVERSE JOINTS IN RECTANGULAR CHANNELS, AND AROUND ALL CORNERS, UNLESS OTHERWISE SHOWN.
4. ALL STEEL THAT IS TO BE CONTINUOUS SHALL HAVE A MINIMUM LAP AT SPICES OF 30 BAR DIAMETERS.
5. AT THE BEGINNING AND OF ALL POURS, A LAYER OF REINFORCEMENT SHALL BE PLACED WITHIN THREE INCHES OF THE TRANSVERSE CONSTRUCTION JOINTS.
6. TRANSVERSE REINFORCEMENT AND TRANSVERSE JOINTS SHALL BE PLACED AT RIGHT ANGLES (OR RADIAL) TO CONDUIT CENTER LINE UNLESS OTHERWISE SHOWN.
7. UNLESS OTHERWISE SHOWN, CONCRETE DIMENSIONS SHALL BE MEASURED VERTICALLY OR HORIZONTALLY AND PARALLEL OR AT RIGHT ANGLES (OR RADIAL) TO THE CENTERLINE OF CONSTRUCTION.
8. UNLESS OTHERWISE SHOWN, TRANSVERSE JOINT KEYWAYS IN BOTH SLABS AND WALLS SHALL BE PLACED AT THE END OF EACH POUR, BUT THE SPACING THEREOF SHALL NOT EXCEED 50 FEET OR BE LESS THAN 10 FEET.
9. TRANSVERSE CONSTRUCTION JOINTS SHALL NOT BE PLACED WITHIN 30 INCHES OF MANHOLE OR JUNCTION STRUCTURE OPENINGS.
10. ALL PIPES SHALL BE EMBEDDED A MINIMUM OF 5 INCHES INTO HEADWALLS OR OTHER STRUCTURES.

NOTE: VERIFY LOCATION AND ELEVATION OF EXISTING UTILITIES BEFORE BEGINNING CONSTRUCTION.



PROFILE "I"

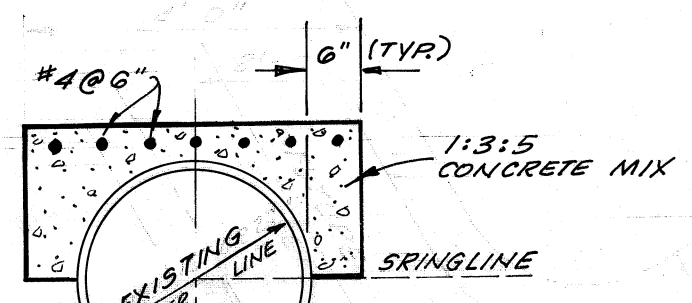


PROFILE "II"

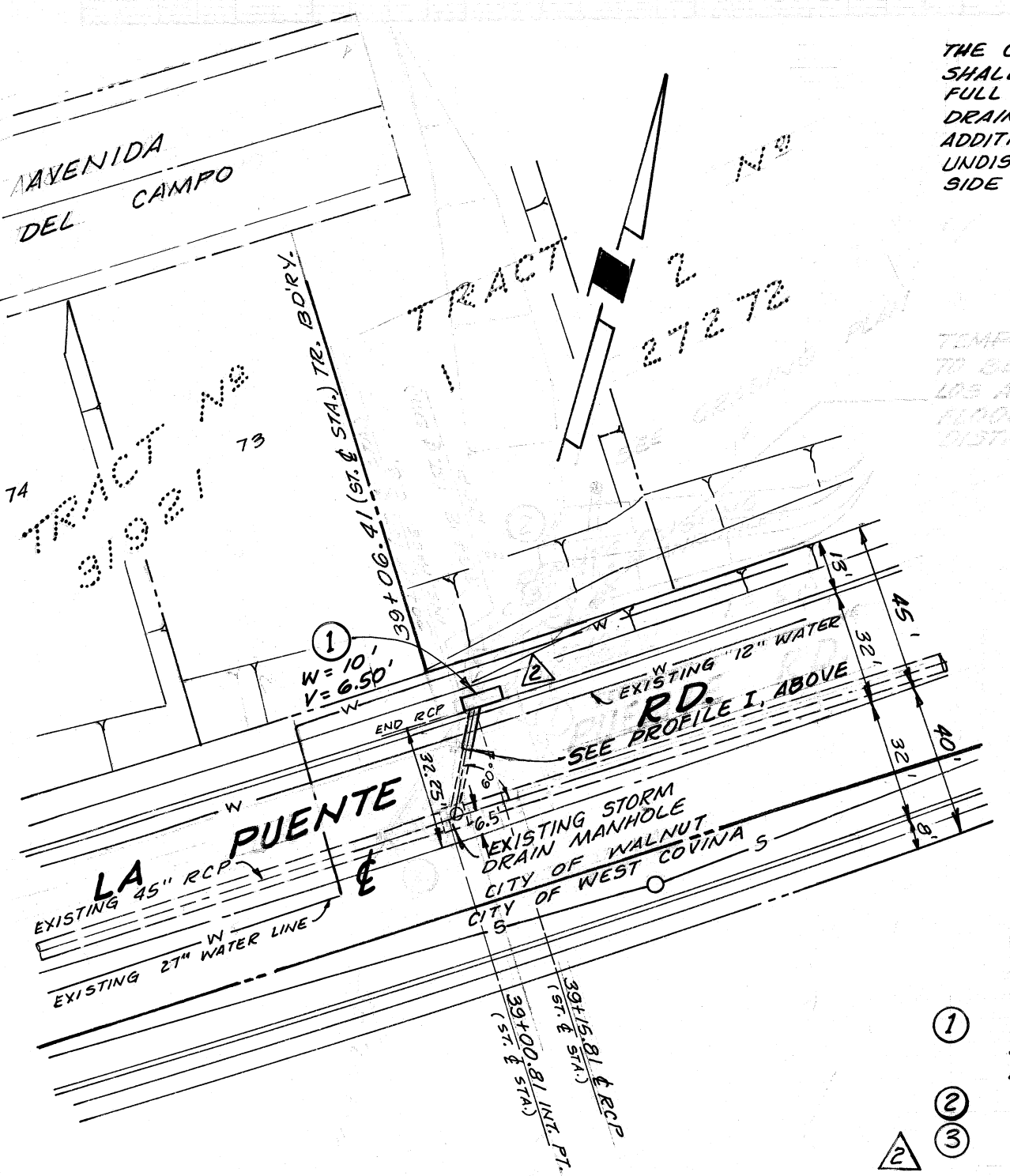
**HYDRAULIC ELEMENT TABLE**

LATERAL	Qcfs	D	Vcfs	Sf	l7
I	INT. - 11.6	30"	2.4	.00080	.013
	ULT. - 1.4	30"	0.3	.00001	.013
II	3.7	21"	1.5	.0005	.013
III	62.2	6'-0" x 1'-6" RCB	6.9	.0072	.013
IV	121.0	8'-3" x 1'-6" RCB	9.8	.0134	.013
V	3.8	21"	1.6	.00057	.013

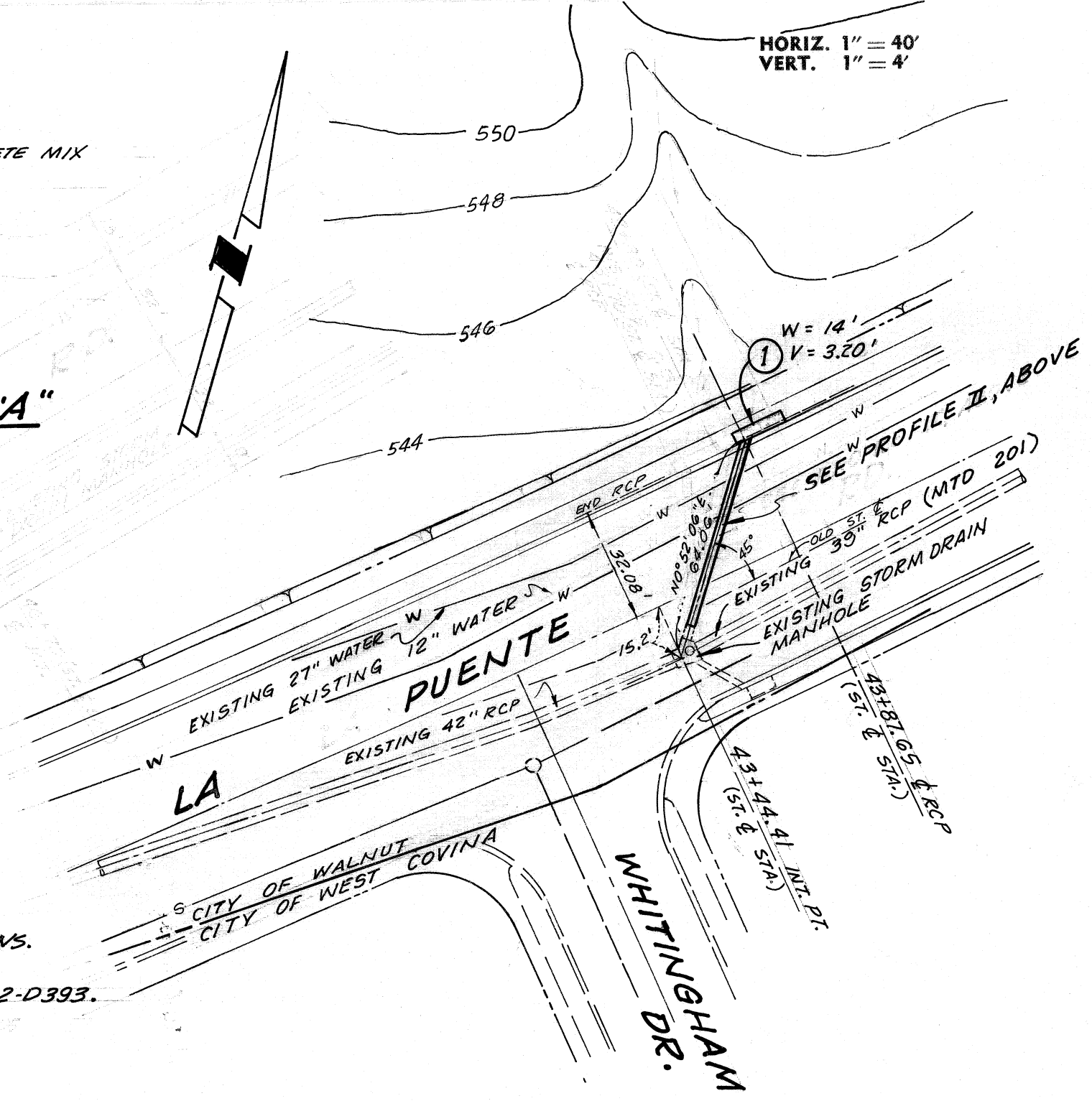
PROFILE SCALE  
HORIZ. : 1" = 40'  
VERT. : 1" = 4'



ENCASEMENT DETAIL "A"  
EXISTING WATER LINE



- CONSTRUCTION NOTES**
1. CONSTRUCT CATCH BASIN #3 PER L.A.C.F.C.D. STD. 2-DIGS. SEE PLAN FOR "W" & "V" DIMENSIONS. LOCAL DEPRESSION #4 PER STD. 2-D415.
  2. CONSTRUCT CONCRETE COLLAR PER L.A.C.F.C.D. STD. 2-D393.
  3. DELETED.



VICINITY MAP  
NO SCALE

**LIST OF STANDARD DRAWINGS**

CATCH BASIN #3	2-D163	PIPE SUPPORT ACROSS TRENCHES	2-D173.1, .2 & .3
TRANSITION STRUCT #3	2-D188	MANHOLE FRAME AND COVER	2-D472
INLET #1	2-D265		
CONCRETE COLLAR	2-D393		
LOCAL DEPRESSION #4	2-D415		
PROTECTION BAR	2-D175		
CURB OPENING	2-D282		
STD. DROP STEP	2-D36		
CATCH BASIN FRAME & COVER	2-D156		
CATCH BASIN REINFORCEMENT (WALLS)	2-D172		
CATCH BASIN REINF. (ROUND M.H.)	2-D157		
CONNECTION TO CATCH BASIN FOR 12" TO 12" PIPES	2-D224		
ADJ. PROTECTION BAR STIRRUP	2-D264		
MANHOLE #3	2-D109		
CONC. RINGS (MANHOLE SHAFT)	2-D107		

GRADE APPROVAL ONLY  
SUBJECT TO REVISION BY  
SIX INCHES  
NOT GOOD FOR BUILDING ELEVATIONS  
FOR L.A. CO. RD. DEPT.  
BY \_\_\_\_\_ DATE \_\_\_\_\_

CITY OF WALNUT  
APPROVED:  
*Frank W. Saffers* 7/2/75  
DATE

PLANS PREPARED BY:  
**V.T.N.**  
SIGNATURE *Buckner* 3/5/75  
DATE  
CIVIL ENGINEER

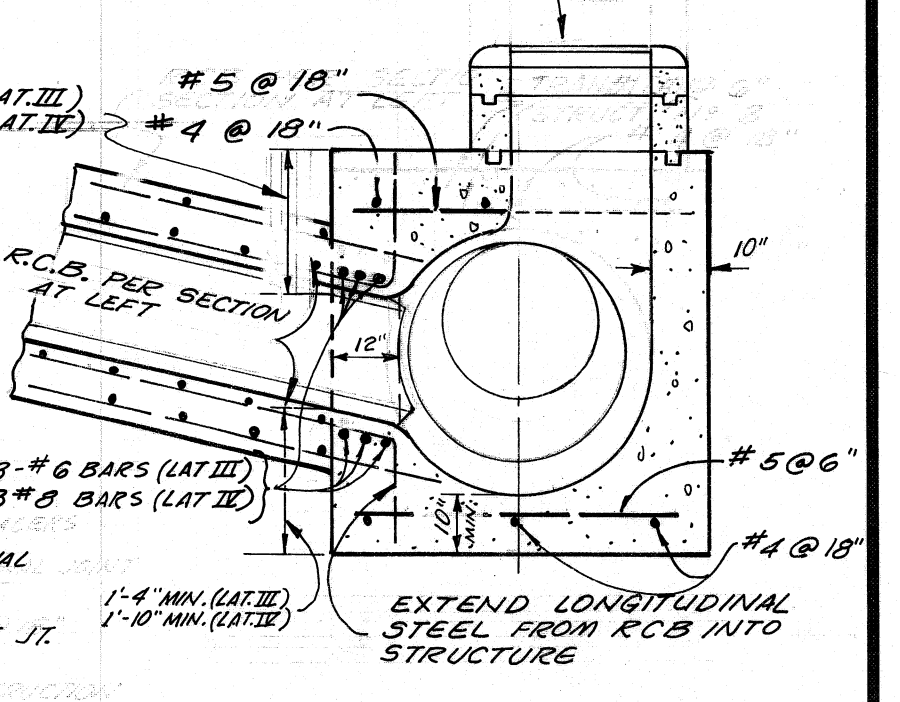
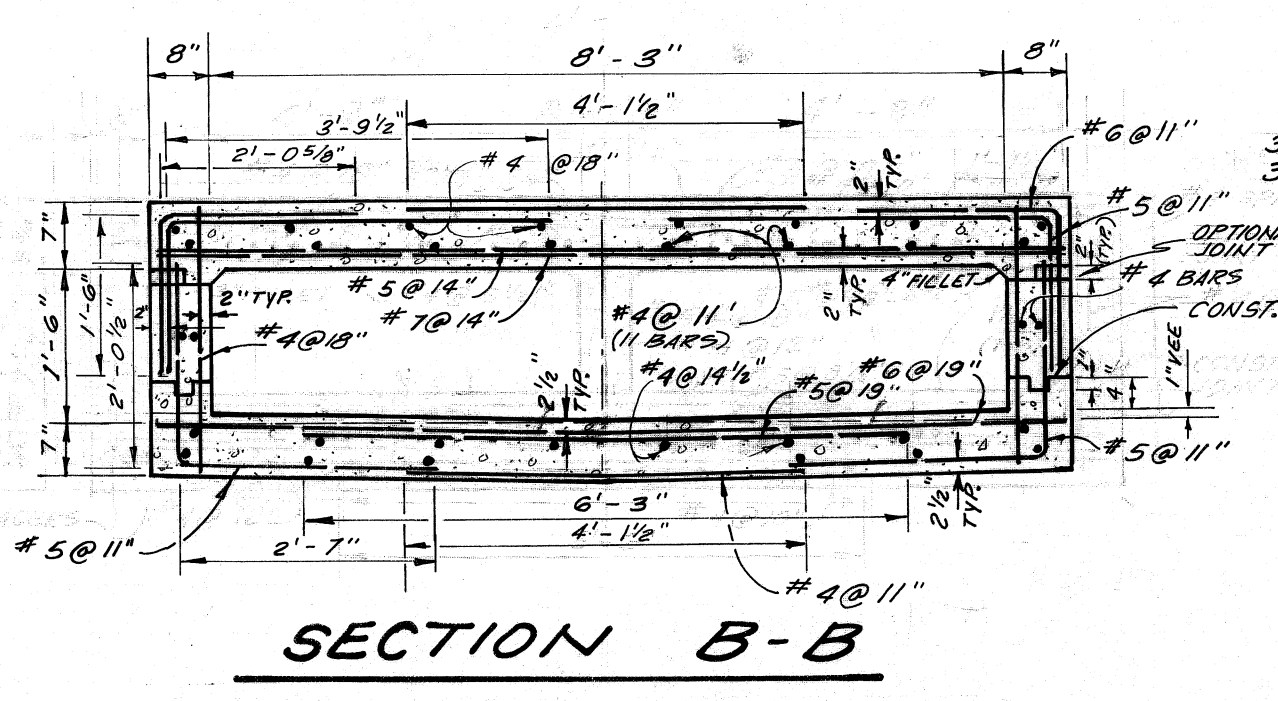
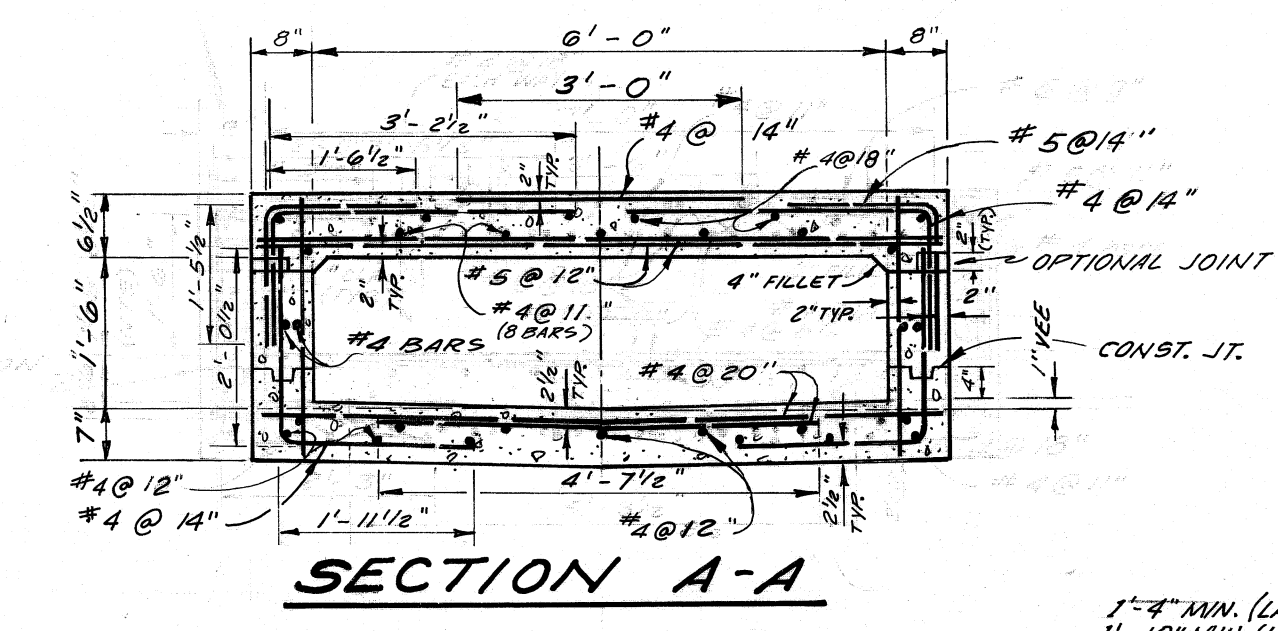
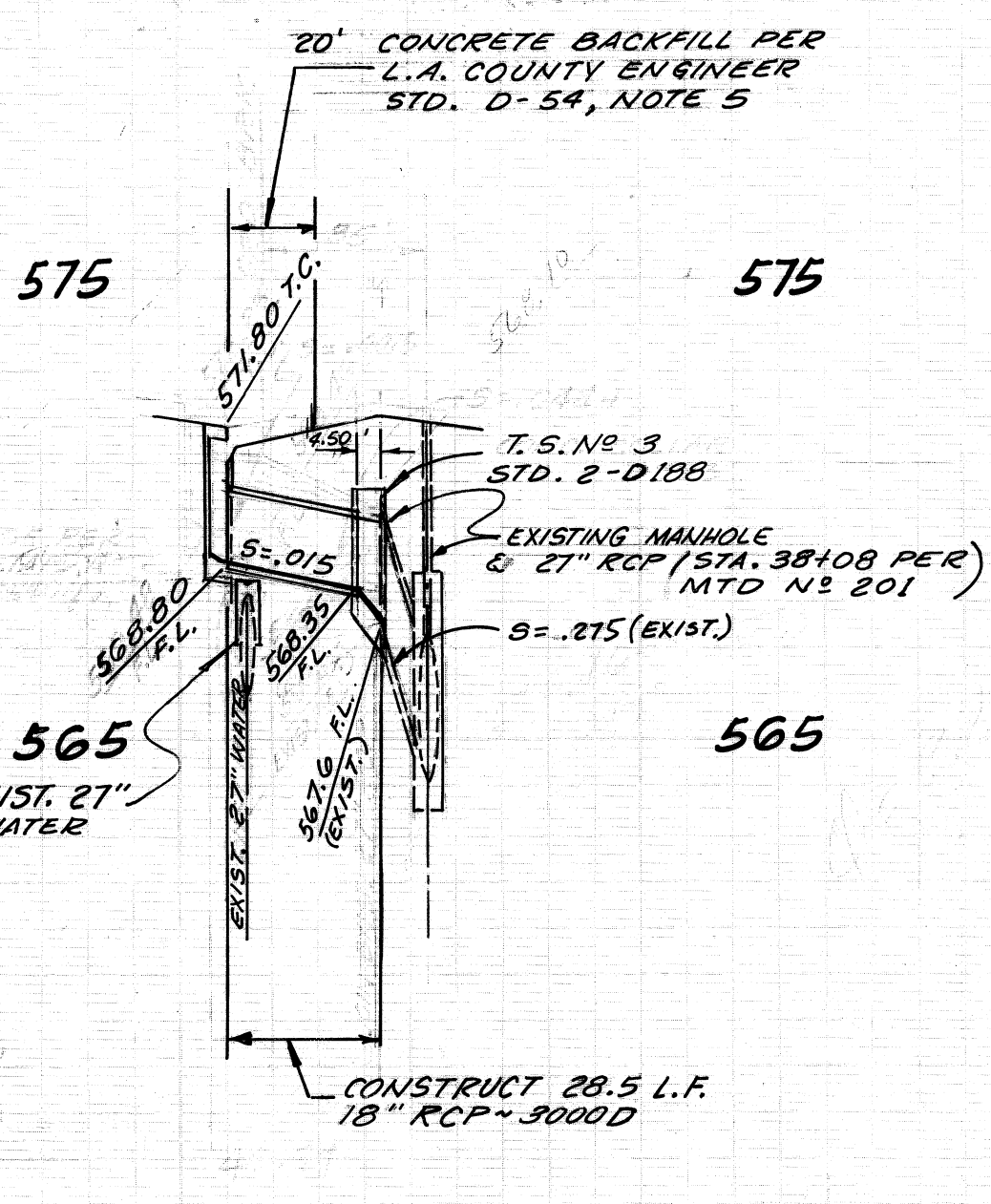
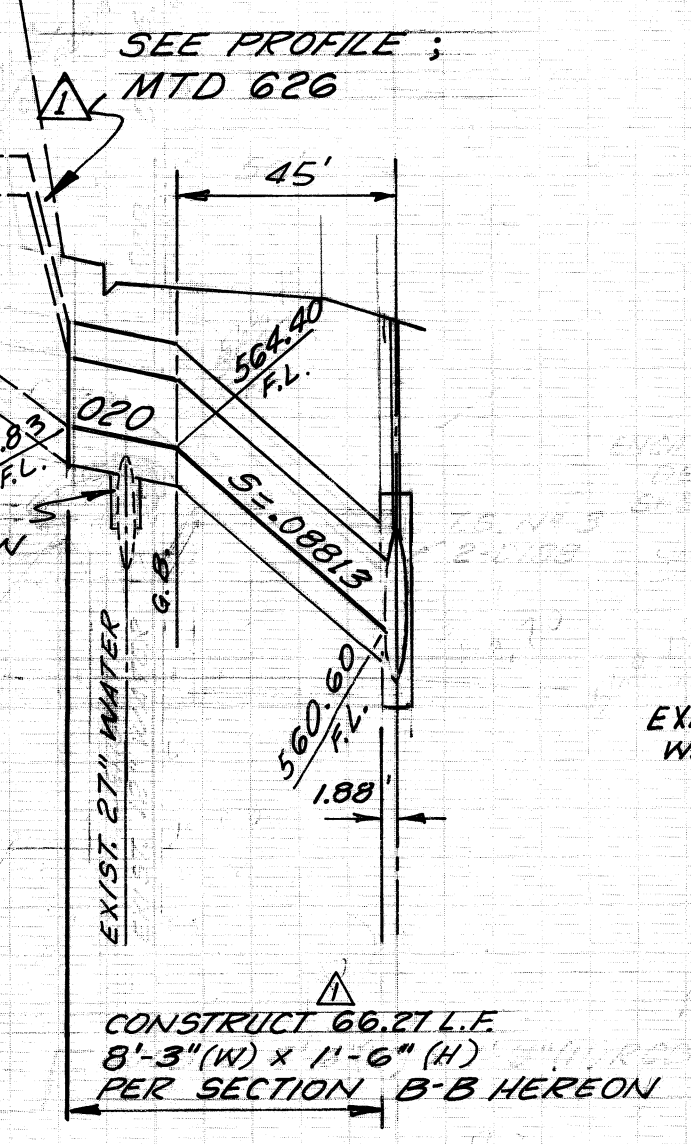
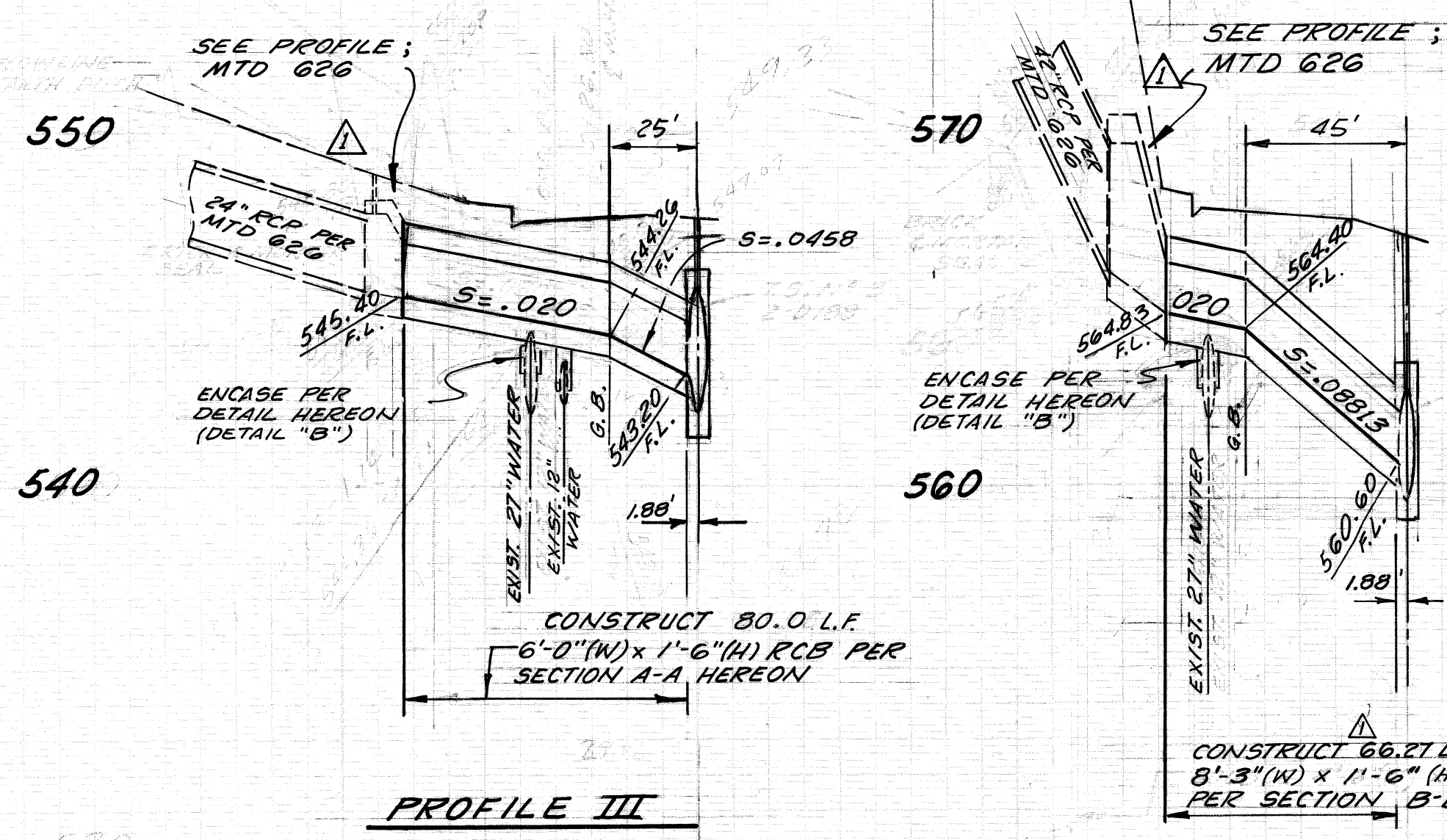
REVISIONS  
1. DELETED 30" RCP LATERAL AND INLET #1 (TEMPORARY) @ LA PUENTE RD. STA. 391.35± (PROFILE I)  
REVISOR: *S. LENTZ* 3/5/75  
APPROVED: *W. Saffers* DATE 7/1/76

REVISIONS  
REVISOR: \_\_\_\_\_ DATE \_\_\_\_\_  
APPROVED: \_\_\_\_\_ DATE \_\_\_\_\_

CITY OF WALNUT  
**STORM DRAIN**  
MISCELLANEOUS TRANSFER DRAIN # 588

TR. SHT 1 of 2 SHTS

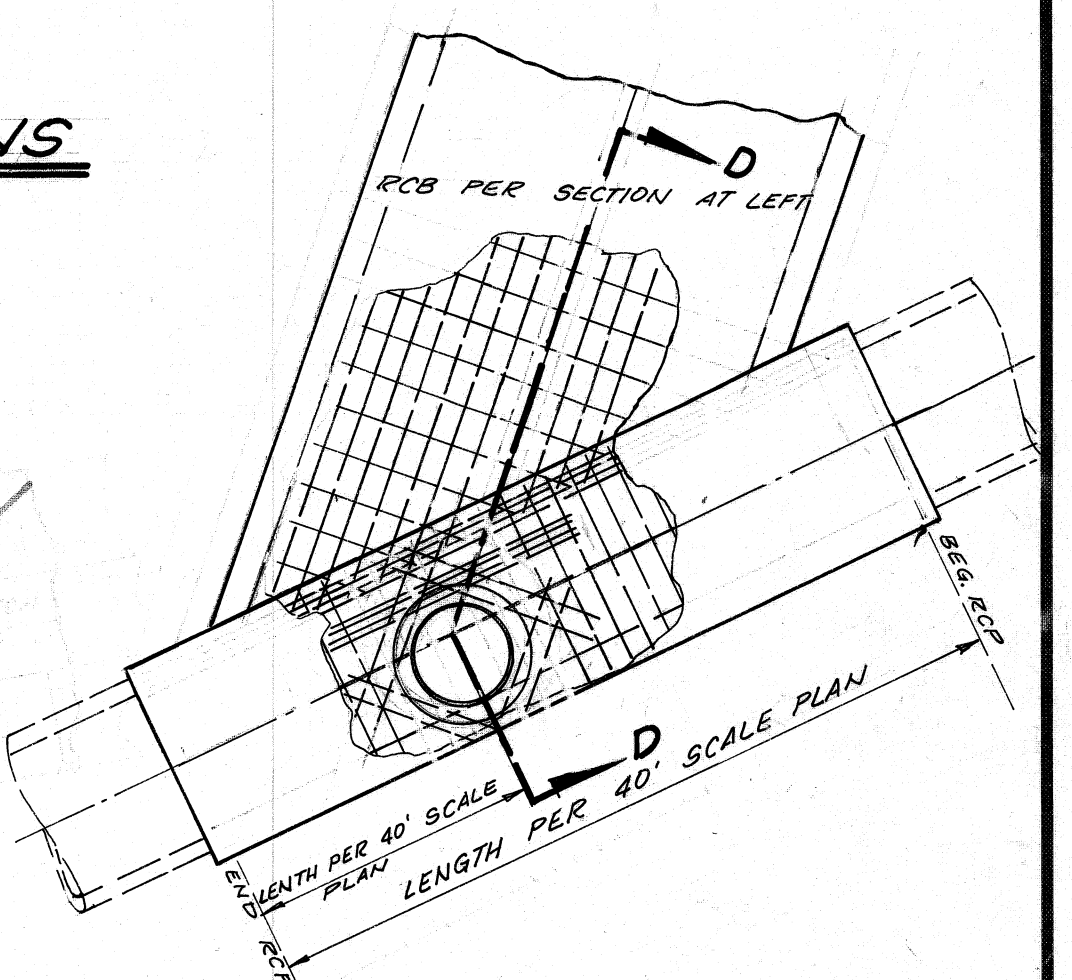
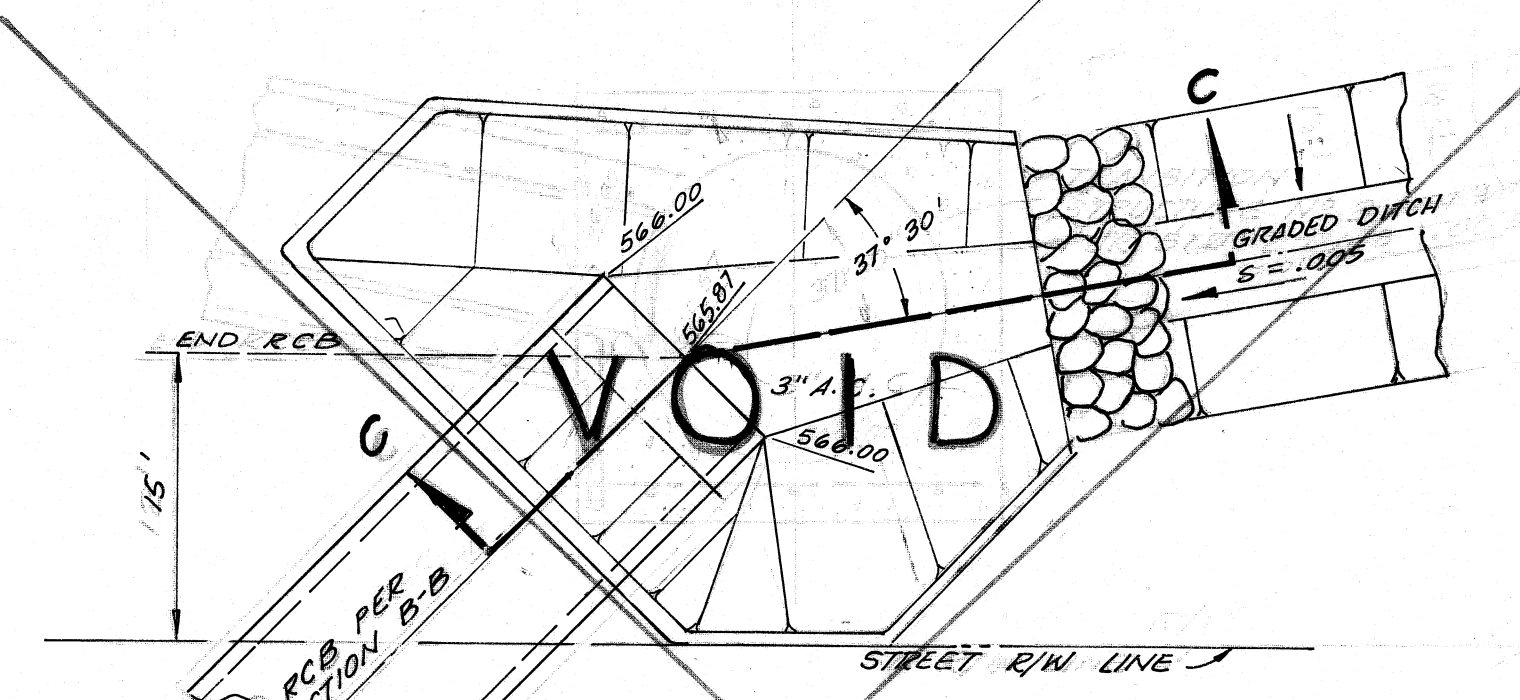
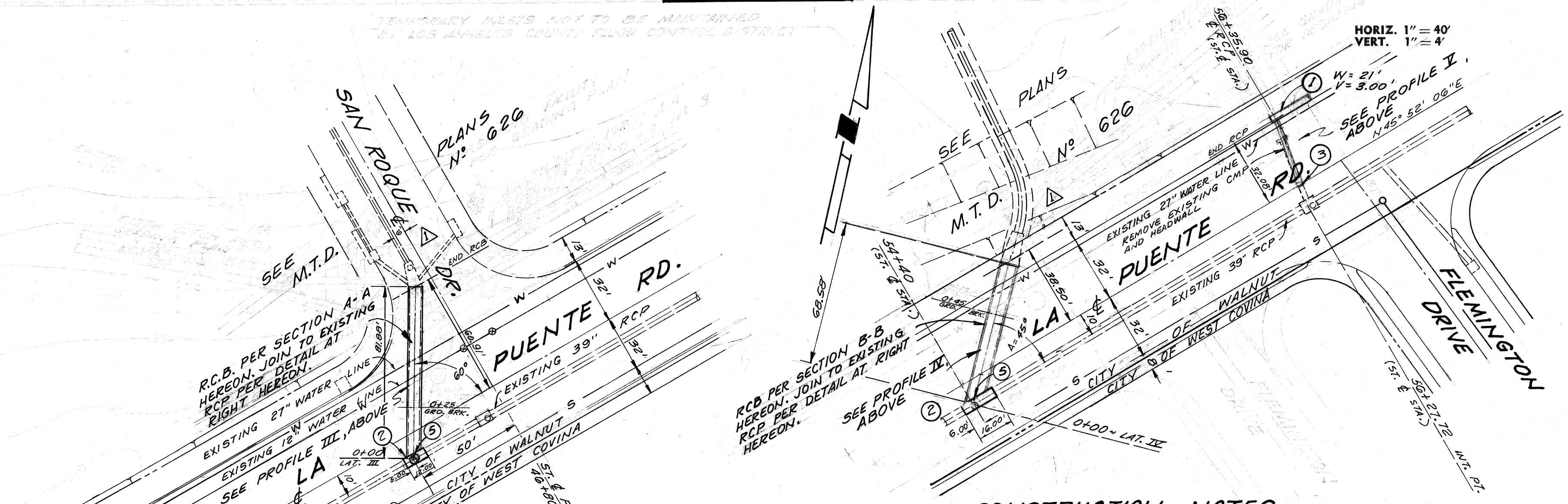
NOTE:  
VERIFY LOCATION AND ELEVATION OF  
EXISTING UTILITIES BEFORE  
BEGINNING CONSTRUCTION.



REINFORCED CONCRETE BOX SECTIONS  
SCALE: 1/2" = 1'-0"

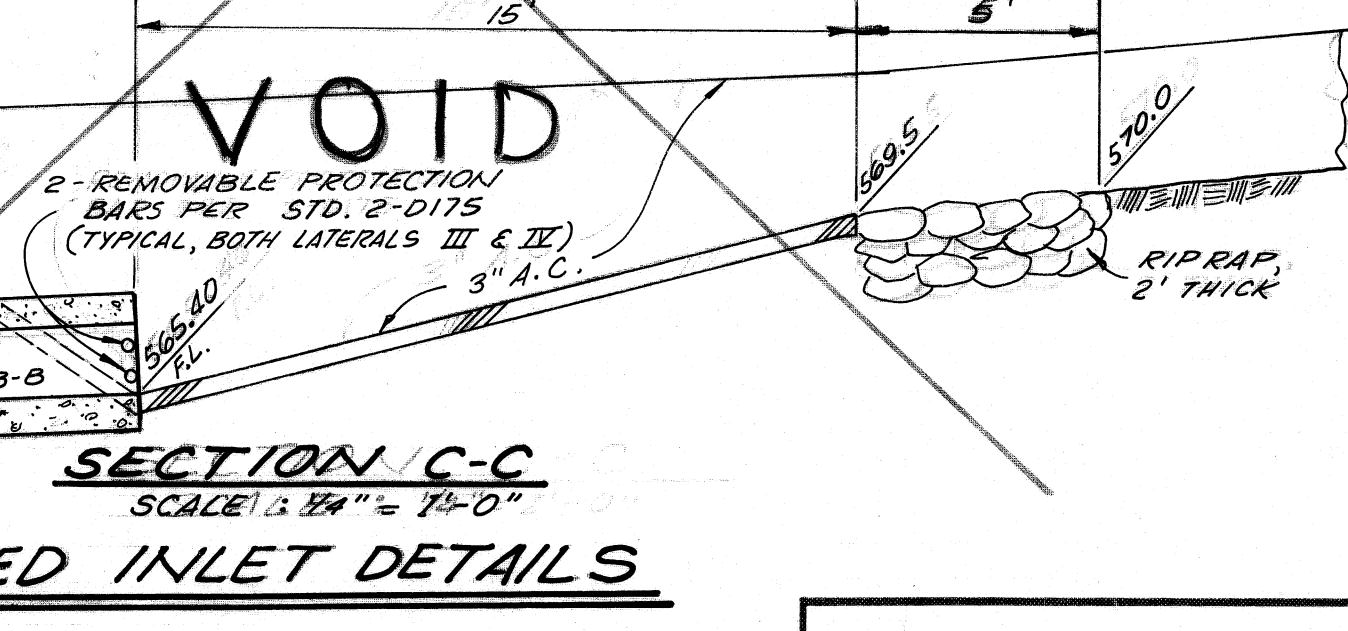
SECTION D-D  
SCALE: 3/8" = 1'-0"

PROFILE SCALE  
HORIZ. : 1" = 40'  
VERT. : 1" = 4'



PLAN  
SCALE: 1/8" = 1'-0"

PLAN  
SCALE: 1/4" = 1'-0"  
JUNCTION STRUCTURE  
(RCB TO RCP MAINLINE)



SECTION C-C  
SCALE: 3/8" = 1'-0"  
PAVED INLET DETAILS

- CONSTRUCTION NOTES**
- CONSTRUCT CATCH BASIN NO. 3 PER L.A.C.F.C.D. STD. 2-DIG3. SEE PLAN FOR "W" & "V" DIMENSION. LOCAL DEPRESSION PER STD. 2-DIG3.
  - CONSTRUCT JUNCTION STRUCTURE PER DETAIL AT RIGHT HEREON.
  - CONSTRUCT TRANSITION STRUCTURE NO. 3 PER L.A.C.F.C.D. STD. 2-DIG3.
  - DELETED.
  - CONSTRUCT MANHOLE NO. 3 PER L.A.C.F.C.D. STD. 2-DIG3.

APPROVED  
CITY OF WALNUT  
OFFICE OF  
CITY ENGINEER  
JWS 7/2/75

ENCASEMENT SHALL EXTEND  
LONGITUDINALLY 12" (MINIMUM)  
BEYOND O.D. OF RCB.

ENCASEMENT DETAIL "B"  
EXISTING WATER LINE

PLANS PREPARED BY:  
V.M.  
SIGNATURE: *Russell Humeau* 3/5/75  
CIVIL ENGINEER R.E. No. 77061

REVISIONS

1. SHOWN EXTENSION OF LATERALS III & IV PER MTD 626. REVISED PROFILES ACCORDINGLY. VOIDED PAVED INLET DETAIL.	REVISED BY: <i>B.L.</i>	REV. NO.:
	APPROVED: <i>F.W. [Signature]</i>	DATE: 10/16/75

LOS ANGELES CITY OF WALNUT DEPARTMENT  
**STORM DRAIN**  
MISCELLANEOUS TRANSFER DRAIN NO. 588

GRADE APPROVAL ONLY  
SUBJECT TO REVISION BY  
SIX INCHES  
NOT GOOD FOR BUILDING ELEVATIONS  
FOR L.A. CO. RD. DEPT.

TR. SHT 2 of 2 SHTS  
154-67  
WPC 154 114B