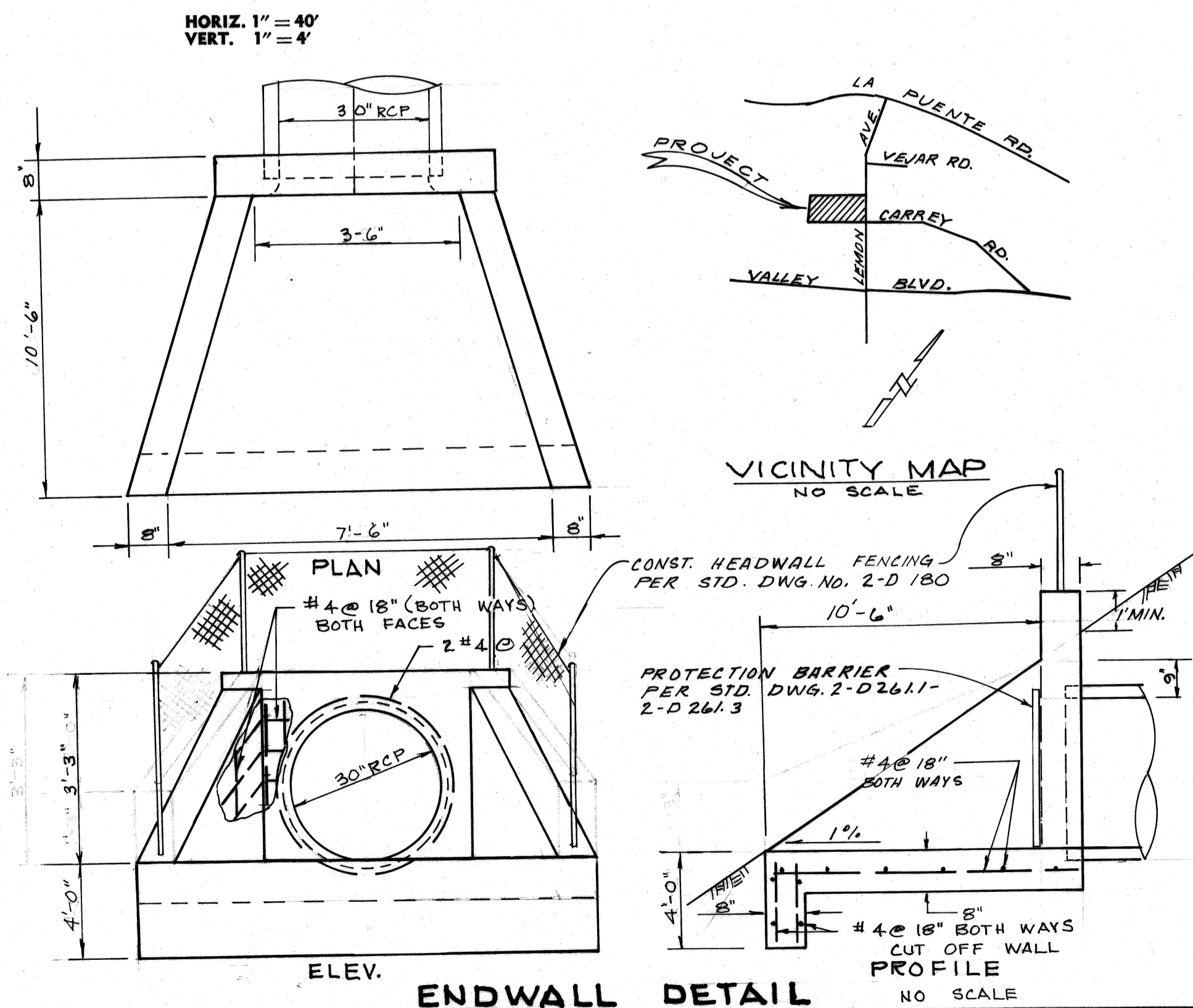
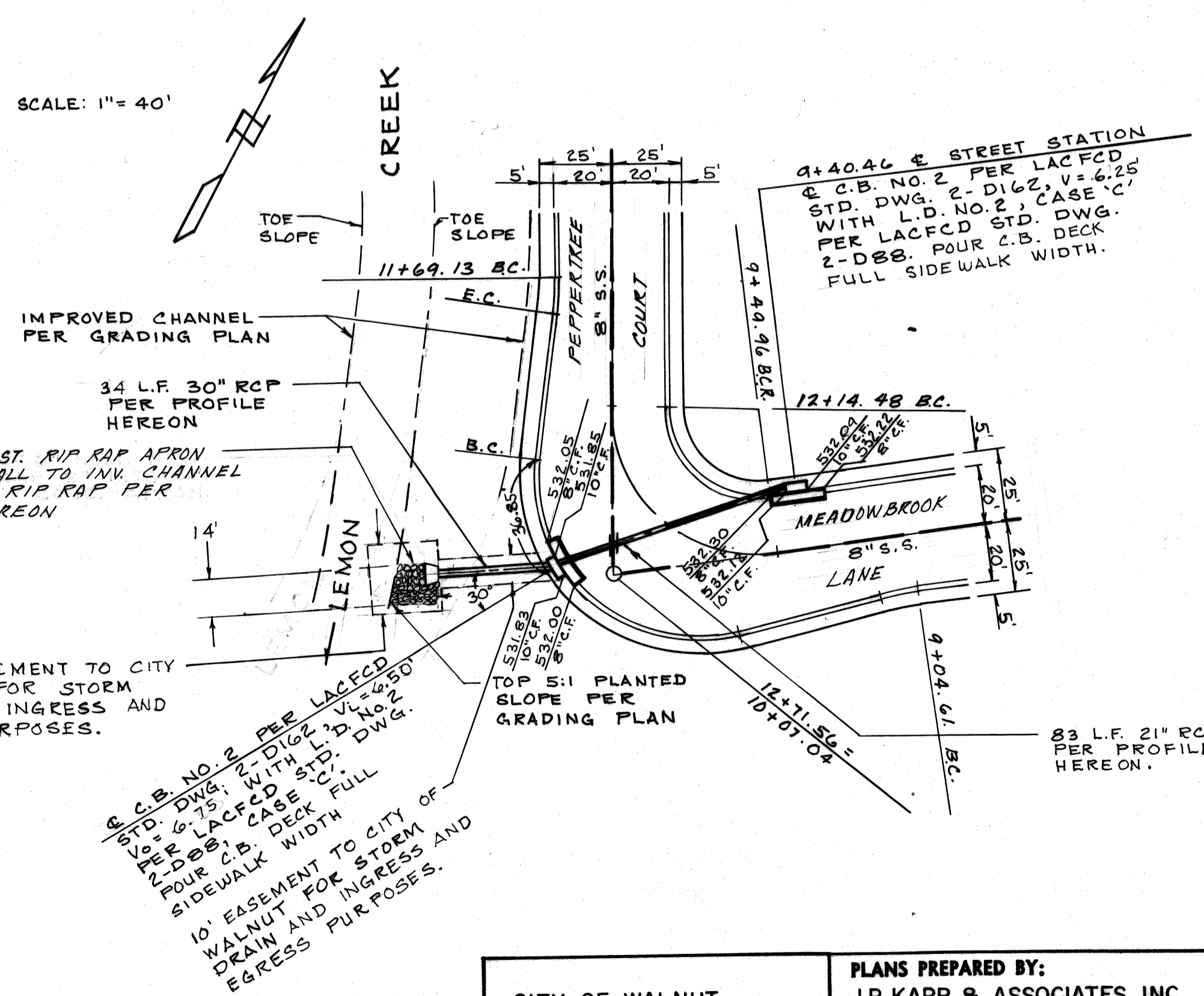


PROFILE SCALE  
1" = 40' HORIZ.  
1" = 4' VERT.

- GENERAL NOTES FOR STORM DRAIN CONSTRUCTION**
- All pipe laid in open trench shall be bedded in accordance with Los Angeles County Engineer Case Ad Bedding per Std. No. D-54.
  - 24 Hours prior to construction, the Contractor shall notify the Los Angeles County Flood Control District Inspector at (213) 226-4206, and Walnut City Engineer at (714) 535-2279.
  - All work shall conform to the requirements of the Standard Specifications for Public Works Construction (1976 Edition), including all amendments adopted thereto prior to the date of approval of these Plans and to the satisfaction of the City Engineer.
  - Before work commences, the Contractor must obtain a permit from the City Engineer to excavate in City Streets. The Permit will be issued without fee.
  - All Backfill shall be compacted to a relative density of 90%.
  - All State and Local Trench safety rules will be rigidly enforced.
  - The Contractor must maintain all Traffic Signs in an erect, readily discernible position, free from obstructions to motorists' vision and shall reset same in the proper position upon completion of construction.
  - Any Existing Utilities crossing the storm Drain shall be supported per Std. No. 2-D173, as directed by the City Engineer.
  - R.C.P. shall be manufactured and inspected in accordance with Section 207-27, 28 and 29 of the Standard Specifications.
  - The Contractor shall furnish a letter of certification from the Pipe Manufacturer as to test results of the pipe installed.
  - All pipe lengths shown are horizontal projections, unless noted otherwise.
  - The Engineer, J.P. Kapp & Assoc. Inc. has investigated all available records of the city and of the other Public Utilities involved, and all known substructures are shown hereon. It shall be the responsibility of the Contractor to locate all substructures, whether shown hereon or not, and to protect them from damage. The Contractor shall bear the total expense of repair or replacement of any said substructures damaged by his operations in connection with the prosecution of said work.
  - Elevations are in feet above U.S.C. & G.S. Mean Sea Level Datum of 1929.
  - This Storm Drain will not be accepted for maintenance until the streets have been paved, Manholes brought up to grade, and the system cleaned to the satisfaction of the City Engineer.
  - The Contractor's attention is directed to Section 7-10.4.1 of the Standard Specifications for Public Works Construction in regards to safety orders.
  - The Contractor shall conform to the 'Minimum Public Safety Requirements' as shown on Los Angeles County Engineer Standard S-2.
  - All concrete shall be 3,000 pounds per square inch Portland Cement Concrete, unless otherwise specified.
  - Finish all exposed edges with  $\frac{3}{4}$  inch chamfers.
  - Reinforcement shall be deformed bars of intermediate grade steel in accordance with ASTM A-615.
  - Rock for grouted Rip Rap shall be good quality, broken concrete and/or river run rock. The smallest dimension shall exceed 3 inches and the largest dimension shall not exceed 18 inches. The largest dimension shall not exceed 4 times the smallest dimension.
  - There shall be a grout bed of at least 2 inches beneath the first layer of rock. All the voids between the rocks shall be filled with grout. Maximum spacing between rocks shall be 2 inches.
  - Surface rocks shall be embedded from  $\frac{1}{2}$  to  $\frac{2}{3}$  their maximum dimensions.



**LIST OF STANDARD DRAWINGS**

L.A. COUNTY ENGINEER STD.		
CATCH BASIN NO. 2	2-D162	
LOCAL DEPRESSION NO. 2	2-D 88	PIPE BEDDING D54
CATCH BASIN OPENING	2-D 232	
C.B. REINFORCING	2-D172	
C.B. REINF. (FOR ROUND M.H.)	2-D157	
STD. DROP STEP	2-D36	
M.H. FRAME & COVER (FOR C.B.)	2-D156	
PROTECTION BAR	2-D175	
PROTECTION BAR STIRRUP	2-D264	
SEWER PROTECTION	2-D251	
PROTECTION BARRIER	2-D261.1 TO .3	
C.B. CONNECTION	2-D224	

AS BUILT

M.T.D. NO. 713  
LOS ANGELES CITY OF WALNUT DEPARTMENT  
STORM DRAIN

GRADE APPROVAL ONLY  
SUBJECT TO REVISION BY  
SIX INCHES  
NOT GOOD FOR BUILDING ELEVATIONS  
FOR L.A. CO. RD. DEPT.  
BY \_\_\_\_\_ DATE \_\_\_\_\_

CITY OF WALNUT APPROVED

PLANS PREPARED BY:  
J.P. KAPP & ASSOCIATES, INC.  
CONSULTING CIVIL ENGINEERS  
17742 IRVINE BLVD., SUITE 203  
TUSTIN, CALIFORNIA 92680  
PHONE (714) 838-0350

REVISIONS

REVISED ENDWALL DETAIL

REVISED BY *[Signature]* RE. No. *12220* DATE 8/29-77

REVISED BY \_\_\_\_\_ RE. No. \_\_\_\_\_ DATE \_\_\_\_\_

APPROVED \_\_\_\_\_ DATE \_\_\_\_\_

REVISIONS

REVISED BY \_\_\_\_\_ RE. No. \_\_\_\_\_ DATE \_\_\_\_\_

APPROVED \_\_\_\_\_ DATE \_\_\_\_\_