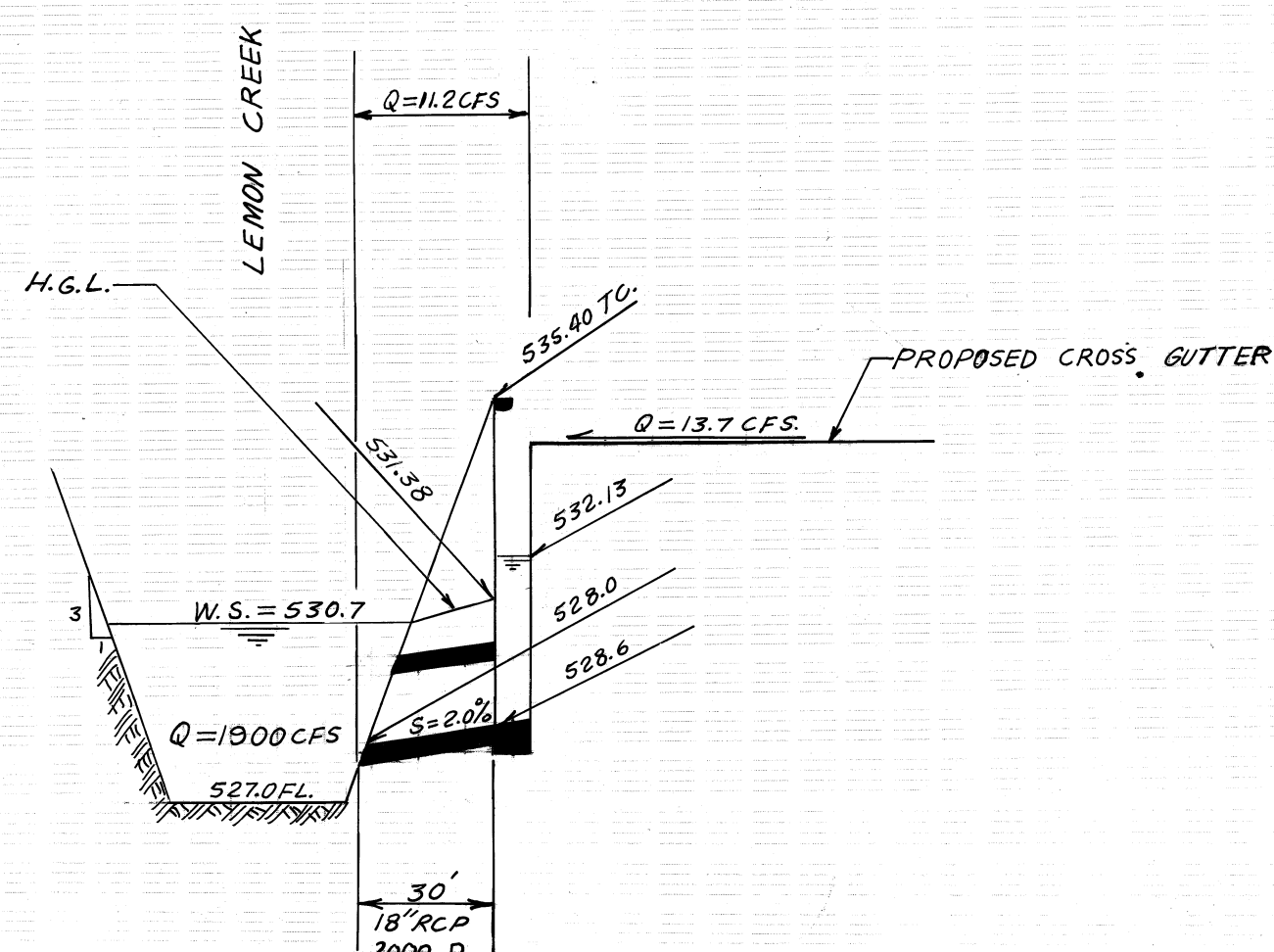
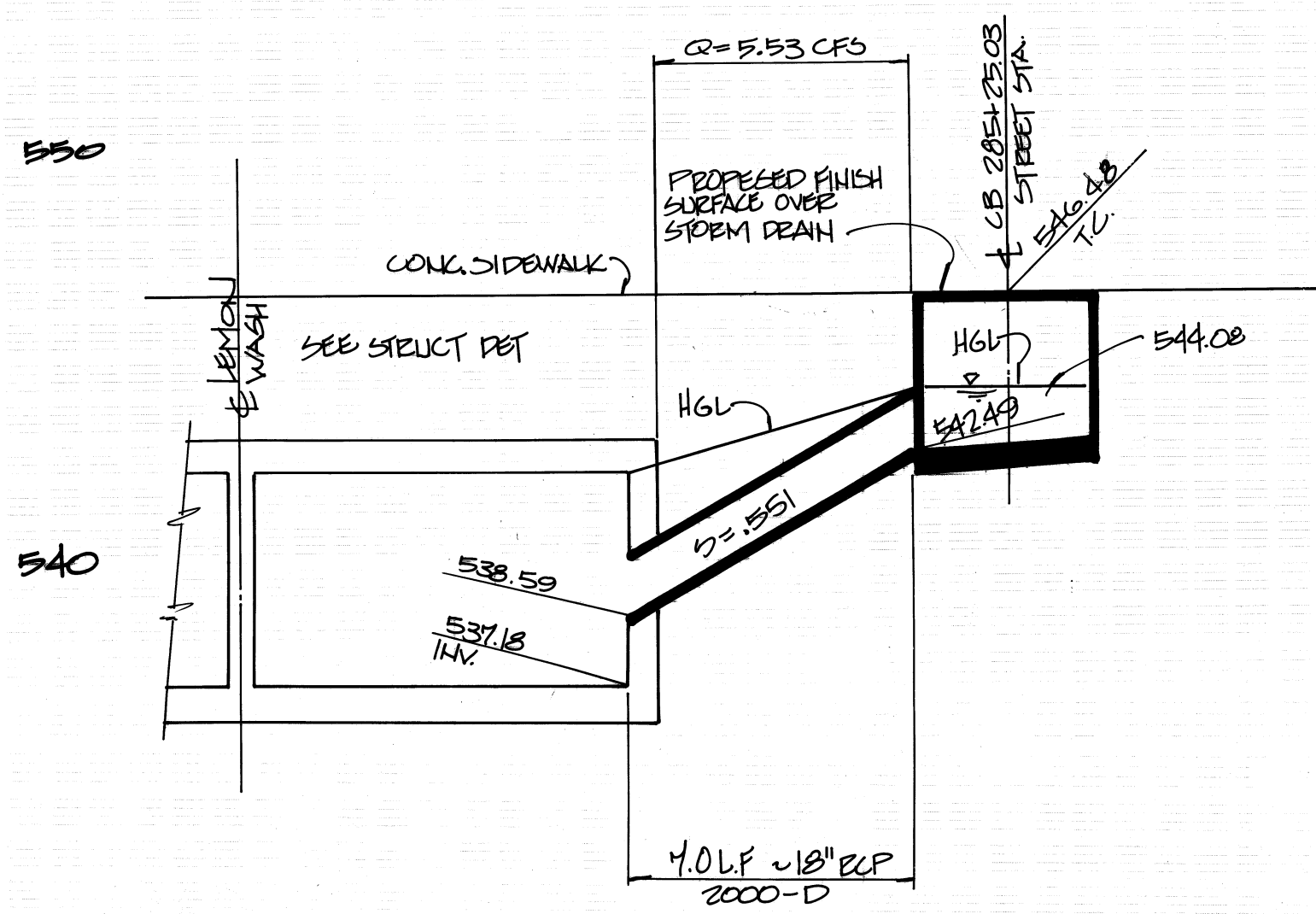


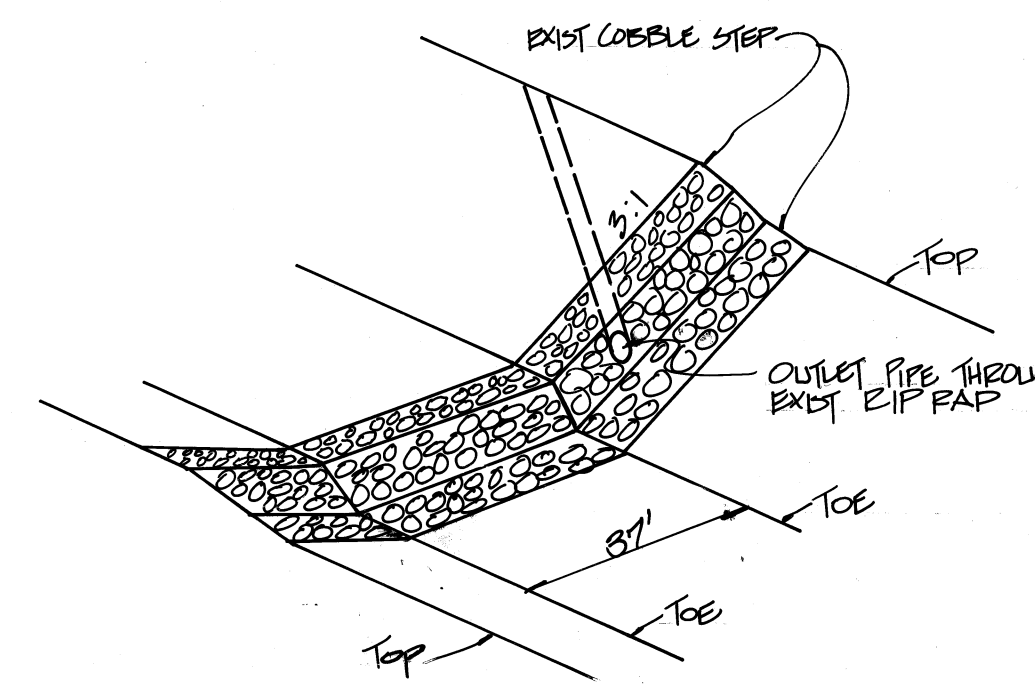
530



**PROFILE LINE 'B'**  
SCALE HORIZ 1"=40'  
VERT 1"=4'  
NOT MAINTAINED BY LACFCO



**PROFILE LINE 'A'**  
SCALE HORIZ 1"=40'  
VERT 1"=4'  
NOT MAINTAINED BY LACFCO



**DETAIL 1**

QUANTITY ESTIMATE		
ITEMS	QUANT.	UNIT
CATCH BASIN NO. 2	1	EA.
LOCAL DEPRESSION NO. 2	2	EA.
RIP RAP	1	TON
18" RCP	37	L.F.
CATCH BASIN NO. 1	1	EA.

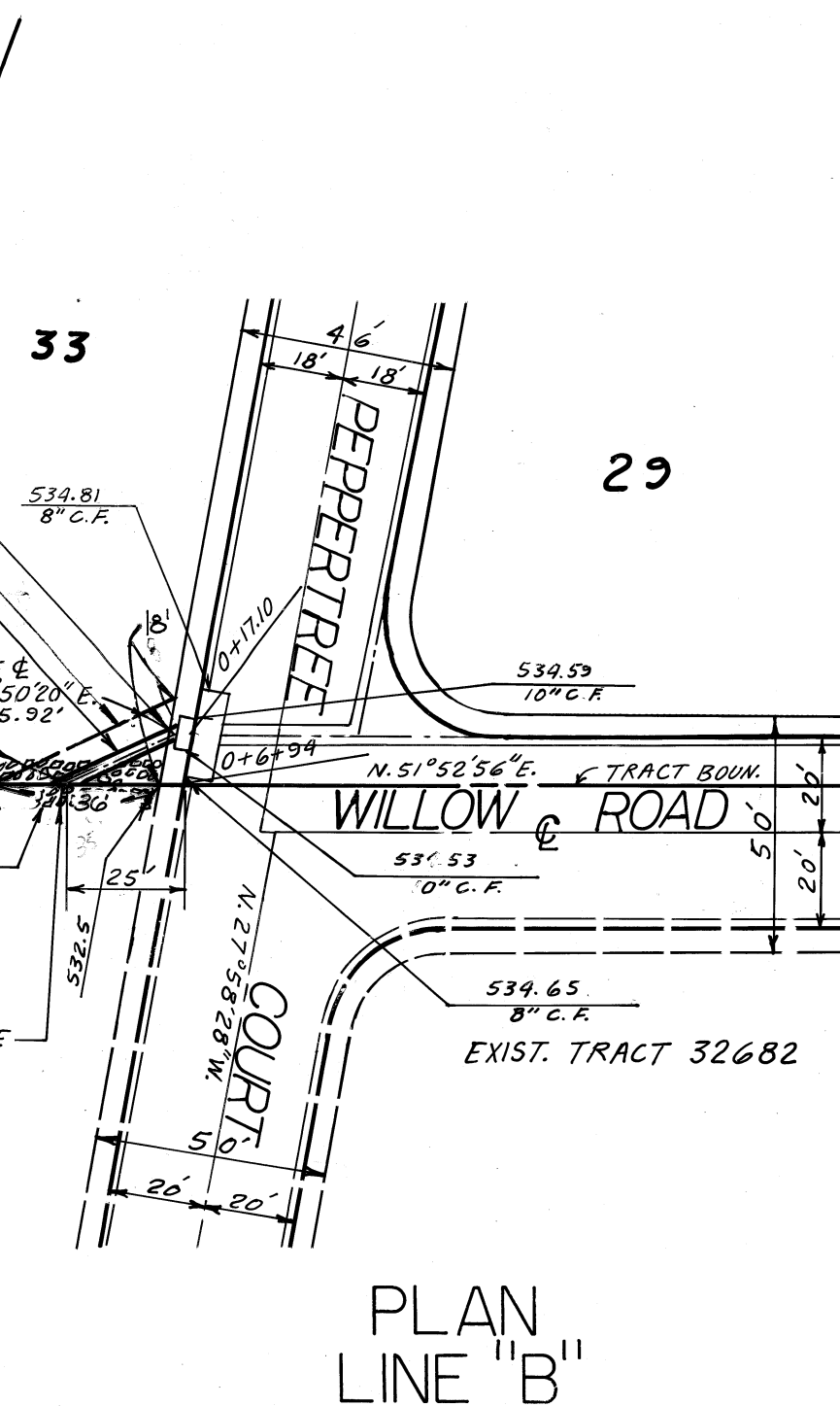
**GENERAL NOTES FOR STORM DRAIN CONSTRUCTION**

- ALL PIPE LAID IN OPEN TRENCH SHALL BE BEDDED IN ACCORDANCE WITH LOS ANGELES COUNTY ENGINEER CASE AD BEDDING PER STD NO. D 54.
- 24 HOURS PRIOR TO CONSTRUCTION, THE CONTRACTOR SHALL NOTIFY THE LOS ANGELES COUNTY FLOOD CONTROL DISTRICT INSPECTOR AT (213) 800-4881 AND WALNUT CITY ENGINEER AT (714) 595-2279.
- ALL WORK SHALL CONFORM TO THE REQUIREMENTS OF THE STANDARD SPECIFICATIONS FOR PUBLIC WORKS CONSTRUCTION (1979 EDITION) INCLUDING ALL AMENDMENTS ADOPTED THERETO PRIOR TO THE APPROVAL OF THESE PLANS AND TO THE SATISFACTION OF THE CITY ENGINEER.
- ALL BACKFILL SHALL BE COMPACTED TO A RELATIVE DENSITY OF 90%.
- ALL STATE AND LOCAL TRENCH SAFETY RULES WILL BE RIGIDLY COMPLIED WITH.
- THE CONTRACTOR MUST MAINTAIN ALL TRAFFIC SIGNS IN AN ERECT, READILY DISCERNIBLE POSITION, FREE FROM OBSTRUCTIONS TO MOTORIST'S VISION AND SHALL RESET SAME IN PROPER POSITION UPON COMPLETION OF CONSTRUCTION.
- ANY EXISTING UTILITIES CROSSING THE STORM DRAIN SHALL BE SUPPORTED PER STD NO. 2-D179 AS DIRECTED BY THE CITY ENGINEER.
- RCP SHALL BE MANUFACTURED AND INSPECTED IN ACCORDANCE WITH SECTION 207-2.7, 2.8 AND 2.9 OF THE STANDARD SPECIFICATIONS.
- THE CONTRACTOR SHALL FURNISH A LETTER OF CERTIFICATION FROM THE PIPE MANUFACTURER AS TO TEST RESULTS OF THE PIPE INSTALLED.
- ALL PIPE LENGTHS SHOWN ARE HORIZONTAL PROJECTIONS, UNLESS NOTED OTHERWISE.
- THE ENGINEER, J.P. KAPP AND ASSOC., INC. HAS INVESTIGATED ALL AVAILABLE RECORDS OF THE CITY AND OF OTHER PUBLIC UTILITIES INVOLVED, AND ALL KNOWN SUBSTRUCTURES ARE SHOWN HEREON. IT SHALL BE THE RESPONSIBILITY OF THE CONTRACTOR TO LOCATE ALL SUBSTRUCTURES, WHETHER SHOWN HEREON OR NOT, AND TO PROTECT THEM FROM DAMAGE. THE CONTRACTOR SHALL BEAR THE TOTAL EXPENSE OF REPAIR OR REPLACEMENT OF ANY SAID SUBSTRUCTURES DAMAGED BY HIS OPERATIONS IN CONNECTION WITH THE PROSECUTION OF SAID WORK.
- ELEVATIONS ARE IN FEET ABOVE USG AND GS MEAN SEA LEVEL DATUM OF 1929.
- THIS STORM DRAIN WILL NOT BE ACCEPTED FOR MAINTENANCE UNTIL THE STREETS HAVE BEEN PAVED, MANHOLES BROUGHT UP TO GRADE, AND THE SYSTEM CLEANED TO THE SATISFACTION OF THE CITY ENGINEER.
- THE CONTRACTORS ATTENTION IS DIRECTED TO SECTION 7-10 4.1 OF THE STANDARD SPECIFICATIONS FOR PUBLIC WORKS CONSTRUCTION IN REGARDS TO SAFETY ORDERS.
- THE CONTRACTOR SHALL CONFORM TO THE "MINIMUM PUBLIC SAFETY REQUIREMENTS" AS SHOWN ON LOS ANGELES COUNTY ENGINEER STANDARD S-2.
- ALL CONCRETE SHALL BE 3000 POUNDS PER SQUARE INCH PORTLAND CEMENT CONCRETE, UNLESS OTHERWISE SPECIFIED.
- FINISH ALL EXPOSED EDGES WITH 3/4 INCH CHAMFERS.
- REINFORCEMENT SHALL BE DEFORMED BARS OF INTERMEDIATE GRADE STEEL IN ACCORDANCE WITH ASTM A-615. GRADE 60.
- ROCK FOR GROUTED RIPRAP SHALL BE GOOD QUALITY BROKEN CONCRETE AND/OR RIVER RUN ROCK. THE SMALLEST DIMENSION SHALL EXCEED 3 INCHES AND THE LARGEST DIMENSION SHALL NOT EXCEED 18 INCHES. THE LARGEST DIMENSION SHALL NOT EXCEED 4 TIMES THE SMALLEST DIMENSION.
- THERE SHALL BE A GROUT BED OF AT LEAST 2 INCHES BENEATH THE FIRST LAYER OF ROCK. ALL THE VOIDS BETWEEN THE ROCKS SHALL BE FILLED WITH GROUT. MAXIMUM SPACING BETWEEN ROCKS SHALL BE 2 INCHES.
- SURFACE ROCKS SHALL BE EMBEDDED FROM 1/2 TO 2/3 THEIR MAXIMUM DIMENSIONS.

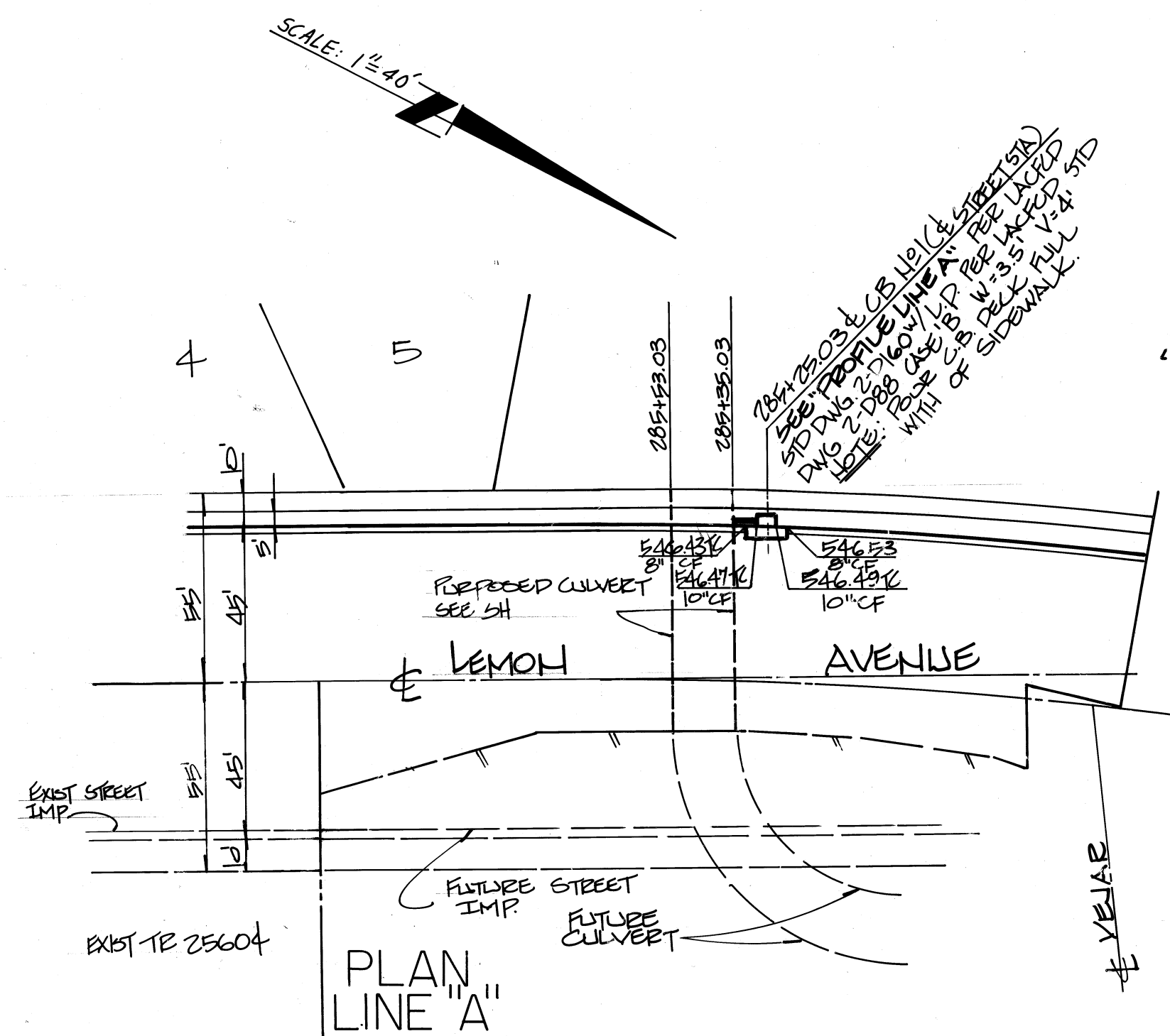
C.C.B. NO. 2 PER LACFCO  
STD. DWG 2-D162 PROFILE 'B'  
V<sub>0</sub> = 6.8 WITH L.D. NO. 2  
PER LACFCO STD. DWG 2-D88  
CASE 'B'. POUR C.B. DECK FULL  
SIDEWALK WIDTH.

EASEMENT FOR STORM DRAIN  
EASEMENT DEDICATED TO THE CITY  
OF WALNUT  
30 L.F. 18" RCP PER PROFILE HEREON

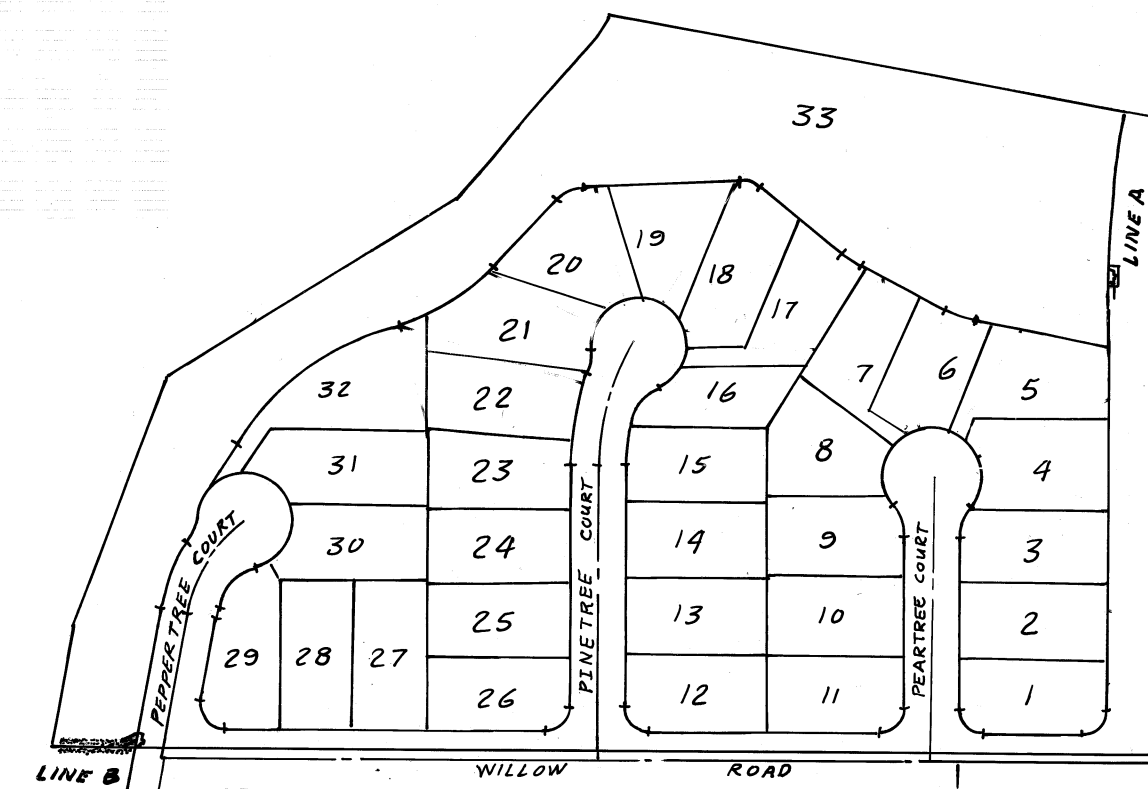
OUTLET PIPE THROUGH EXIST.  
RIP RAP. (SEE DETAIL 1)  
REPLACE RIP RAP AROUND PIPE



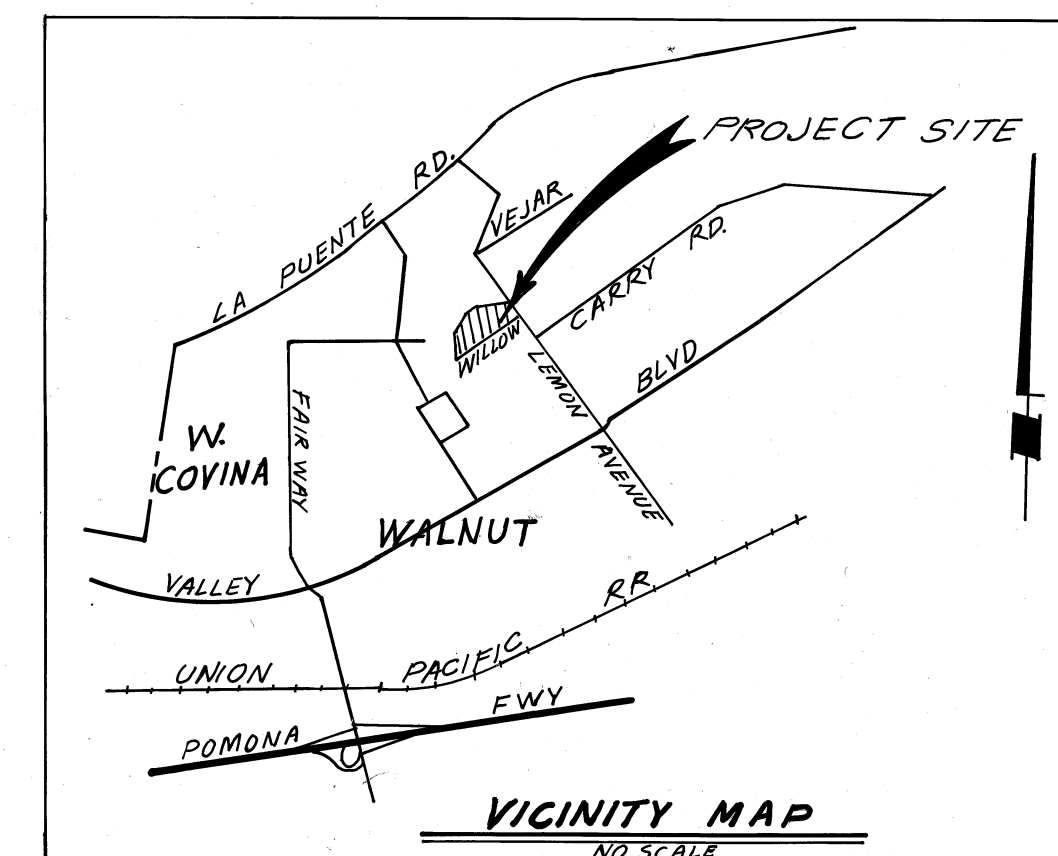
**PLAN LINE 'B'**



**PLAN LINE 'A'**



**INDEX MAP**  
NOT TO SCALE



**VICINITY MAP**  
NO SCALE

**LIST OF STANDARD DRAWINGS**

	LA COUNTY ENGINEER STANDARD
CATCH BASIN NO. 2	2-D162
LOCAL DEPRESSION NO. 2	2-D88
CATCH BASIN OPENING	PIPE BEDDING 059
OB REINFORCEMENT	2-D172
OB REINF. (FOR ROUND MH)	2-D157
STD DROP STEP	2-D86
MH FRAME AND COVER (FOR OB)	2-D156
PROTECTION BAR	2-D175
PROTECTION BAR STIRRUP	2-D264
SEWER PROTECTION	2-D251
PROTECTION BARRIER	2-D261.1 TO .3
OB CONNECTION	2-D224
CATCH BASIN NO. 1	2-D160

CITY OF WALNUT  
APPROVED  
*Frank Sady* 5/1/80

PLANS PREPARED BY:  
J.P. KAPP & ASSOCIATES, INC.  
CONSULTING CIVIL ENGINEERS  
501 PARK CENTER DRIVE, SUITE 200  
SANTA ANA, CALIFORNIA 92705  
PHONE (714) 547-8445  
J.P. KAPP R.C.E. 22015

REVISIONS					
REVISED	NO.	RE. NO.	REVISED	RE. NO.	DATE
APPROVED	DATE	DATE	APPROVED	DATE	DATE

M.T.D. NO. 895  
CITY OF WALNUT  
STORM DRAIN  
TR.37980 WPC 169 SHT. 1 OF 1