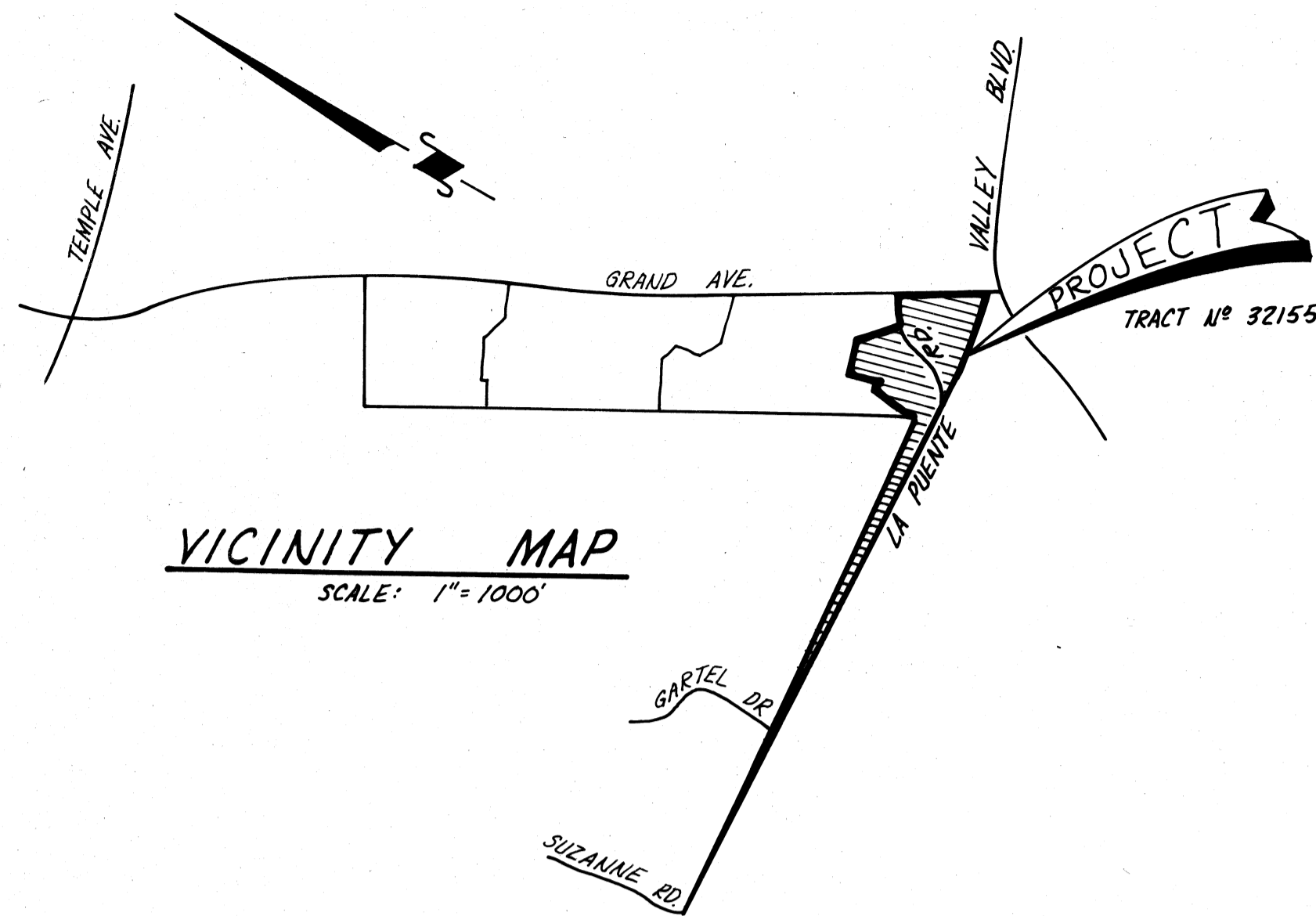


GENERAL NOTES FOR STORM DRAIN CONSTRUCTION

1. ALL PIPE LAID IN OPEN TRENCH SHALL BE BEDDED IN ACCORDANCE WITH L.A. COUNTY F.C.D. STD. DWG. NO. 2-D177.
2. 24 HOURS PRIOR TO CONSTRUCTION, THE CONTRACTOR SHALL NOTIFY THE CITY ENGR., (714) 595-2275.
3. ALL WORK SHALL CONFORM TO THE REQUIREMENTS OF THE STANDARD SPECS FOR PUBLIC WORKS CONSTRUCTION AND SUPPLEMENT, 1979 EDITION, 1981 SUPPLEMENT.
4. ALL BACKFILL SHALL BE COMPACTED TO RELATIVE DENSITY OF 90%.
5. ALL STATE AND LOCAL TRENCH SAFETY RULES WILL BE RIGIDLY ENFORCED.
6. THE CONTRACTOR MUST MAINTAIN ALL TRAFFIC SIGNS IN AN UPRIGHT, READILY DISCERNIBLE POSITION AND FREE FROM OBSTRUCTIONS TO MOTORIST'S VISION, AND SHALL RESET SAME IN THE PROPER POSITION UPON COMPLETION OF CONSTRUCTION.
7. EXISTING UTILITIES CROSSING THE STORM DRAIN SHALL BE SUPPORTED PER LACFGD STD. 2-D173 AS DIRECTED BY THE CITY ENGINEER.
8. R.C.P. SHALL BE MANUFACTURED AND INSPECTED IN ACCORDANCE WITH SECTION 207-2.6, 2.7, 2.8 AND 2.9 OF THE STANDARD SPECIFICATIONS FOR PUBLIC WORKS CONSTRUCTION (1979 EDITION), 1981 SUPPLEMENT.
9. THE CONTRACTOR SHALL FURNISH A LETTER OF CERTIFICATION FROM THE PIPE MANUFACTURER AS TO TEST RESULTS OF PIPE INSTALLED.
10. ALL PIPE LENGTHS SHOWN ARE HORIZONTAL PROJECTIONS, UNLESS OTHERWISE NOTED.
11. ALL CONCRETE SHALL HAVE A 28 DAY COMPRESSIVE STRENGTH OF 3000 PSI.
12. ALL REINFORCING STEEL SHALL CONFORM TO ASTM A-615-GRADE 60.
13. THE ENGINEER, V.T.N., HAS INVESTIGATED ALL AVAILABLE RECORDS OF THE CITY AND OF THE UTILITY COMPANIES INVOLVED, AND ALL KNOWN SUBSTRUCTURES ARE SHOWN HEREON. IT SHALL BE THE RESPONSIBILITY OF THE CONTRACTOR TO LOCATE ALL SUBSTRUCTURES, WHETHER OR NOT SHOWN HEREON, AND TO PROTECT THEM FROM DAMAGE, THE CONTRACTOR SHALL BEAR THE TOTAL EXPENSE OF REPAIR OR REPLACEMENT OF SAID SUBSTRUCTURES DAMAGED BY HIS OPERATIONS IN CONNECTION WITH THE PROSECUTION OF SAID WORK.
14. THIS STORM DRAIN WILL NOT BE ACCEPTED FOR MAINTENANCE UNTIL THE STREETS HAVE BEEN PAVED, MANHOLES BROUGHT UP TO GRADE, AND THE SYSTEM IS CLEANED TO THE SATISFACTION OF THE CITY ENGINEER.
15. ELEVATIONS ARE IN FEET ABOVE U.S.C. G.S. MEAN SEA LEVEL DATUM OF 1929.
16. FINISH ALL EXPOSED EDGES W/ 3/4" CHAMFER.
17. ALL STEEL THAT IS TO BE CONTINUOUS SHALL HAVE A MINIMUM LAP AT SPLICES OF 30 BAR DIAMETERS.
18. ALL PIPE BE EMBEDDED A MINIMUM OF 5 INCHES INTO HEADWALLS OR OTHER STRUCTURES.

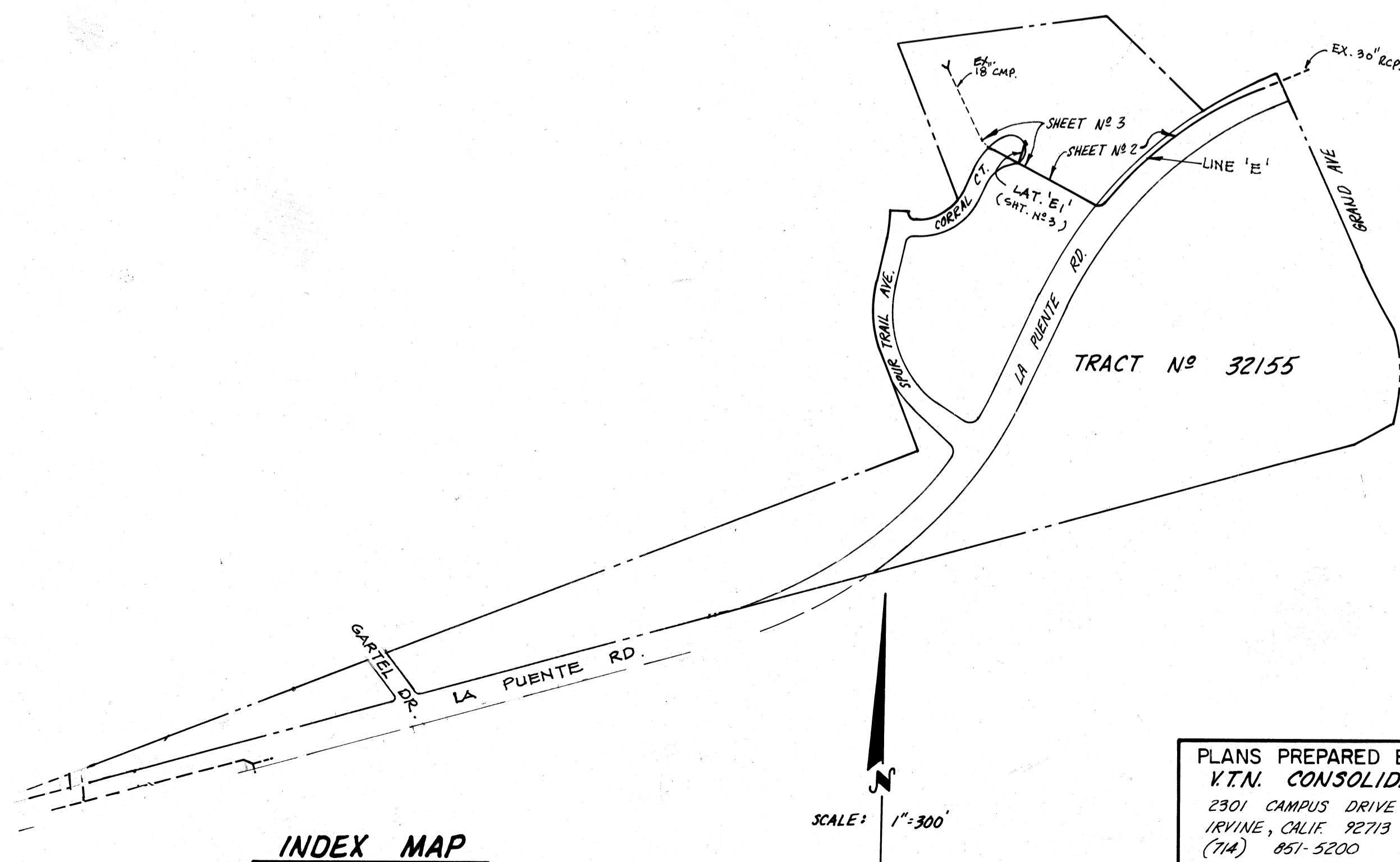


CONSTRUCTION NOTES

- ① CONSTRUCT CONCRETE COLLAR PER L.A.C.F.C.D. STD. 2-D393.
- ② CONSTRUCT MANHOLE NO. 1 PER L.A.C.F.C.D. STD. 2-D102.
- ③ CONSTRUCT CONC. PIPE ANCHOR PER L.A. COUNTY ENGINEERS STD. D-72.
- ④ REMOVE EXISTING 8" BRICK & MORTAR SEAL AND JOIN EXISTING 30" R.C.P.
- ⑤ REMOVE EXIST. PAVEMENT AS REQUIRED & REPLACE IN KIND AFTER COMPLETION PER CITY OF WALNUT STD. WS-507.
- ⑥ CONSTRUCT TRANSITION STRUCTURE NO. 3 PER L.A.C.F.C.D. STD. 2-D188; D₁ = 24" & D₂ = 30"
- ⑦ CONSTRUCT C.D. NO. 2 PER L.A.C.F.C.D. STD. 2-102; W = 7' & V = 4' LOCAL DEPRESSION PER L.A.C.F.C.D. STD. 68-02.
- ⑧ ENCASE PIPE PER L.A. COUNTY ENGINEERS STD. S-23 (CASE IV)

QUANTITY ESTIMATE

ITEM	QUANTITY	
24" R.C.P. - 2000 D	250.30	L.F.
24" R.C.P. - 1400 D	648.50	L.F.
18" R.C.P. - 1600 D	42.66	L.F.
① CONCRETE COLLAR	2	EA.
② MANHOLE #1 STRUCTURE	4	EA.
③ PIPE ANCHOR	6	EA.
④ REMOVE BRICK & MORTAR SEAL	1	EA.
⑤ REMOVE & REPLACE PAVEMENT	3500	S.F.
⑥ TRANSITION STRUC. #3	1	EA.
⑦ CATCH BASIN #2 (W=7' & V=4')	1	EA.
⑧ PIPE ENCASEMENT	1	EA.



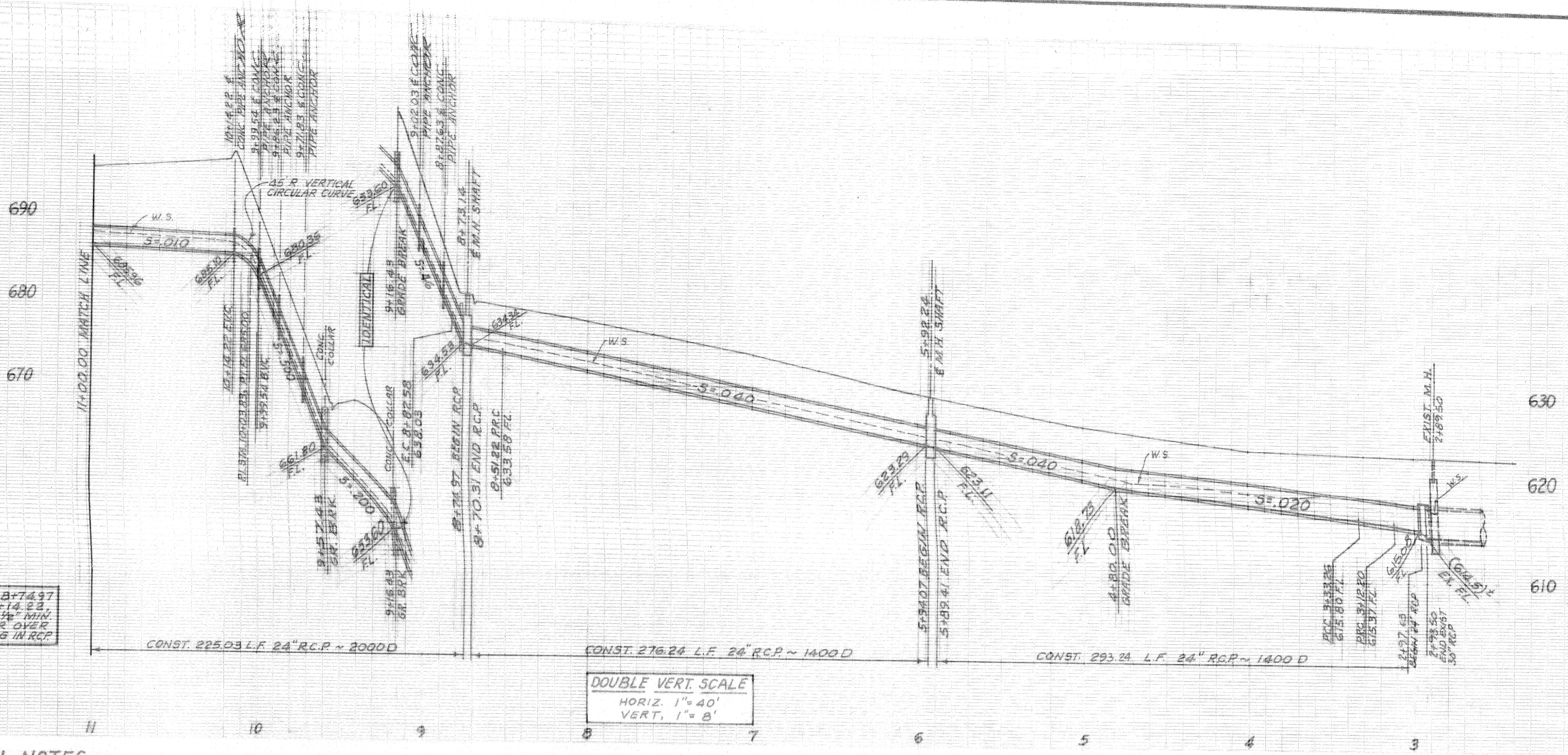
PLANS PREPARED BY:
V.T.N. CONSOLIDATED INC.
2301 CAMPUS DRIVE
IRVINE, CALIF. 92713
(714) 851-5200
Lawrence Redfield 9-24-'81
RCE 28768

BENCH MARK
C.G. 1701 ELEV. 617.011
R.D. B.M. TAG NR. CTR. OF CONC. HEADWALL 24 FT. N. & LA PUENTE RD. 40.2 MI. W/O GRAND AVE.
COVINA (1975)

BASIS OF BEARINGS
N 20° 30' 04" W OF THE W'LY. LINE OF LOT 5, C.M. WRIGHT TRACT, M.D. 5-75, AS SHOWN ON TRACT 40715, H.P.

APPROVAL
CITY OF WALNUT
CITY ENGINEER
Ronald L. Kranzer 10503 10-21-81
RONALD L. KRANZER R.C.E. DATE

CITY OF WALNUT
STORM DRAIN
TRACT NO 32155 134A

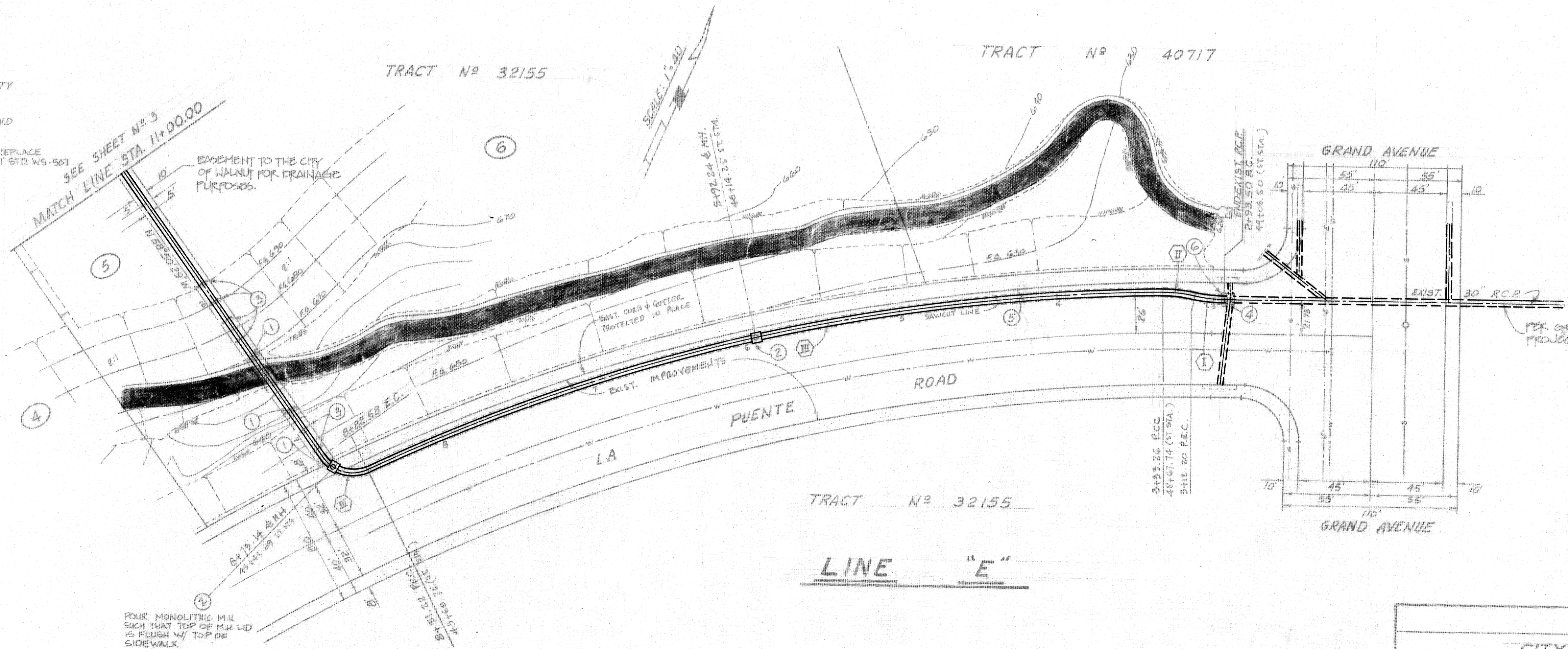


NOTE: FROM STA. 8+74.97 TO STA. 10+14.23, PROVIDE 1/4\"/>

DOUBLE VERT. SCALE
HORIZ. 1" = 40'
VERT. 1" = 8'

CONSTRUCTION NOTES

- 1 - CONST. CONCRETE COLLAR PER L.A.C.F.C.D. STD. 2-D393.
- 2 - CONST. MANHOLE N° 1 PER L.A.C.F.C.D. STD. 2-D102.
- 3 - CONST. CONC. PIPE ANCHOR PER L.A. COUNTY ENGINEER'S STD. D-72.
- 4 - REMOVE EXIST. 9" BRICK AND MOTOR SEAL AND JOIN EXIST. 30" R.C.P.
- 5 - REMOVE EXISTING PAVEMENT AS REQUIRED AND REPLACE IN KIND AFTER COMPLETION PER CITY OF WALNUT STD. WS-507.
- 6 - CONST. TRANSITION STRUCTURE N° 3 PER L.A.C.F.C.D. STD. 2-D183, D=24" D=30"



NO.	Δ	R	L	T
(IV)	79°50'42"	22.50	31.36	18.83
(III)	24°12'22"	122.0	577.96	262.90
(II)	13°26'36"	90	21.06	10.58
(I)	11°54'13"	90	18.70	9.38

± R.C.P. CURVE DATA

APPROVED BY:
CITY OF WALNUT
CITY ENGINEER

PLANS PREPARED BY:
V.T.N. CONSOLIDATED INC.
2301 CAMPUS DRIVE
IRVINE, CALIFORNIA 92715
(714) 851-5200

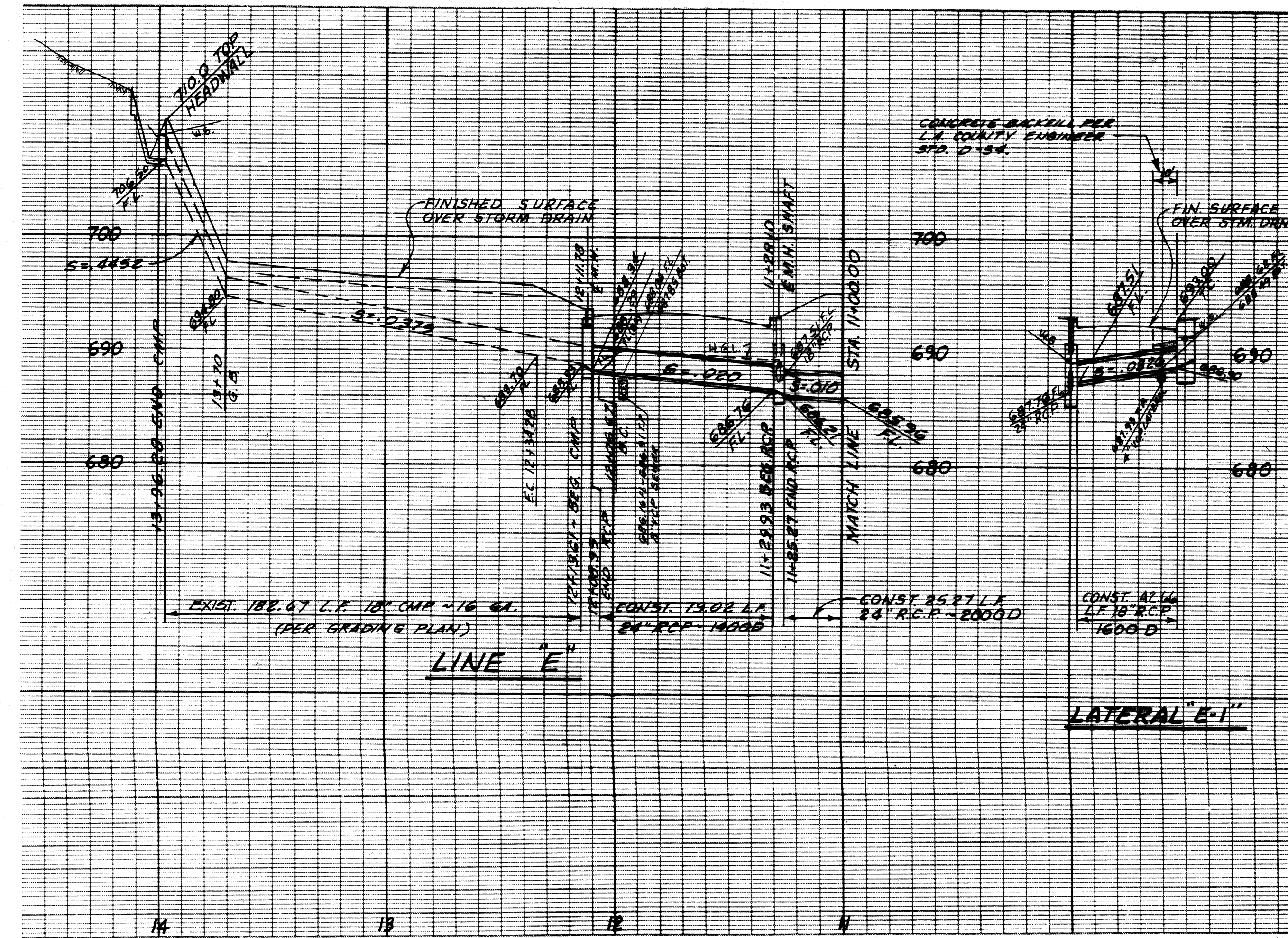
CITY OF WALNUT
STORM DRAIN
TRACT N° 32155

Ronald L. Krantz
RONALD L. KRANTZ

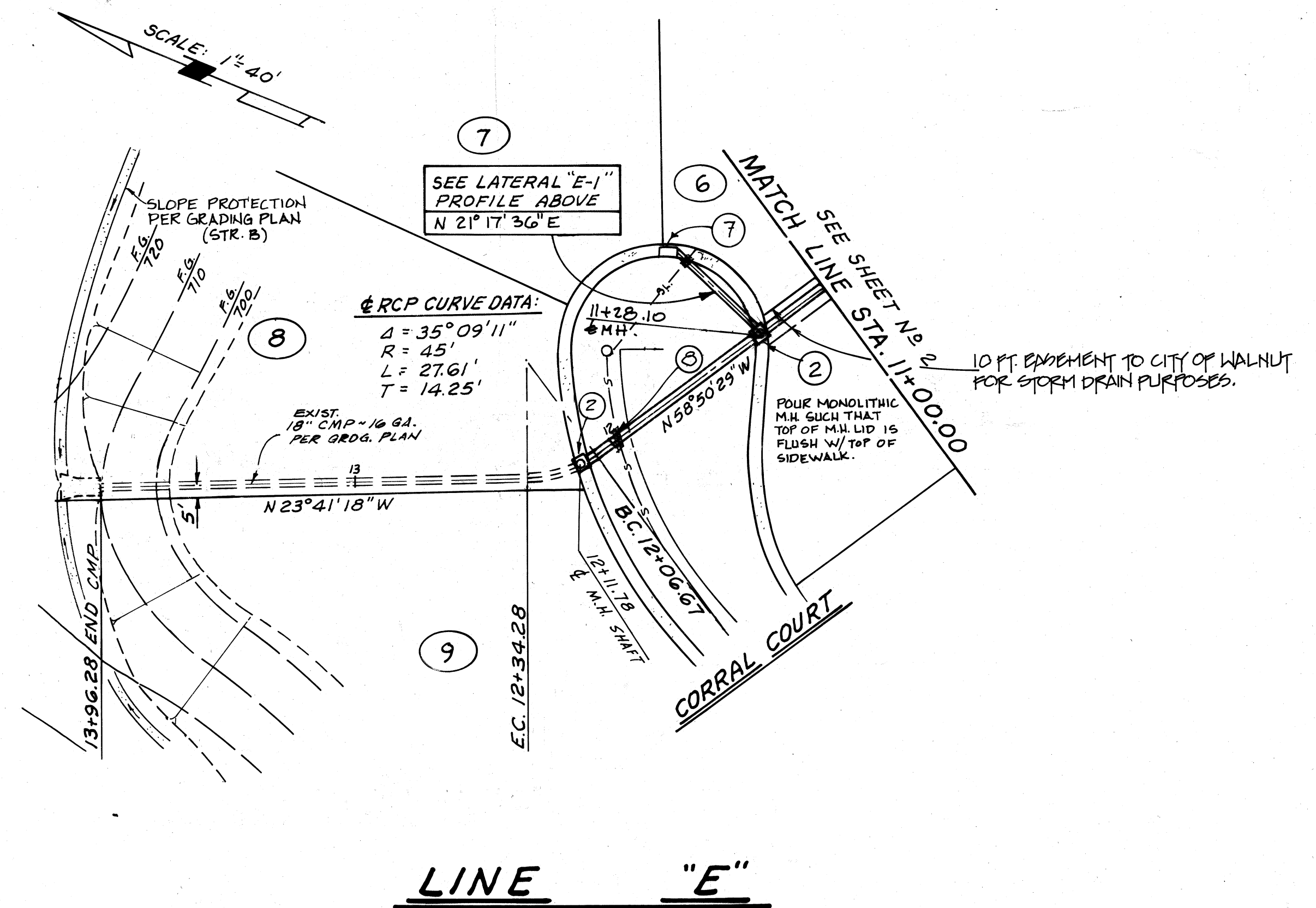
18500 10-21-81
R.C.E. DATE

Lawrence Pofford
CIVIL ENGINEER

20768 9-24-81
R.C.E. DATE



- CONSTRUCTION NOTES**
- ② CONSTRUCT MANHOLE NO. 1 PER L.A.C.F.C.D. STD. 2-1102.
 - ① CONSTRUCT C.P. NO. 2 PER L.A.C.F.C.D. STD. 2-1102; W=7' IV=4.1'
 - ③ LOCAL DEPRESSION PER L.A.C.F.C.D. STD. 68-02.
 - ④ ENCASE PIPE PER L.A.C. ENGINEERS STD. 5-23 (CASE IV.)



APPROVED BY: CITY OF WALNUT CITY ENGINEER <i>Ronald L. Kraemer</i> 10/20/03 10-24-03 RONALD L. KRAEMER R.C.E.		PLANS PREPARED BY: V.T.N. CONSOLIDATED INC. 22001 CAMPUS DRIVE IRVINE, CALIF. 92717 (714) 851-5200 <i>Laurence Redfield</i> 10/20/03 9-24-03 CIVIL ENGINEER R.C.E. DATE		CITY OF WALNUT STORM DRAIN TRACT NO 32155 134C SHT. 3 OF 3 SHTS.	
---	--	---	--	--	--