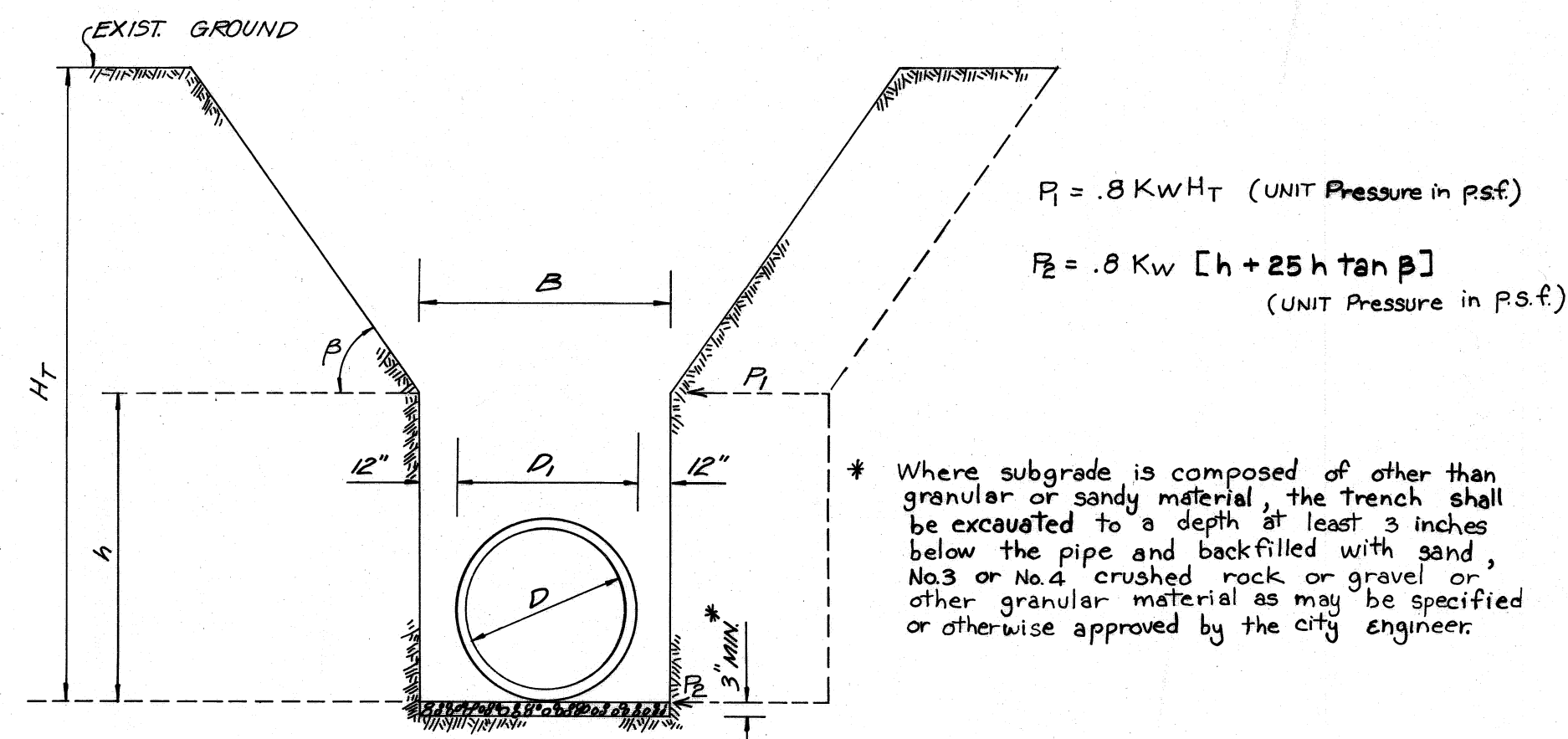
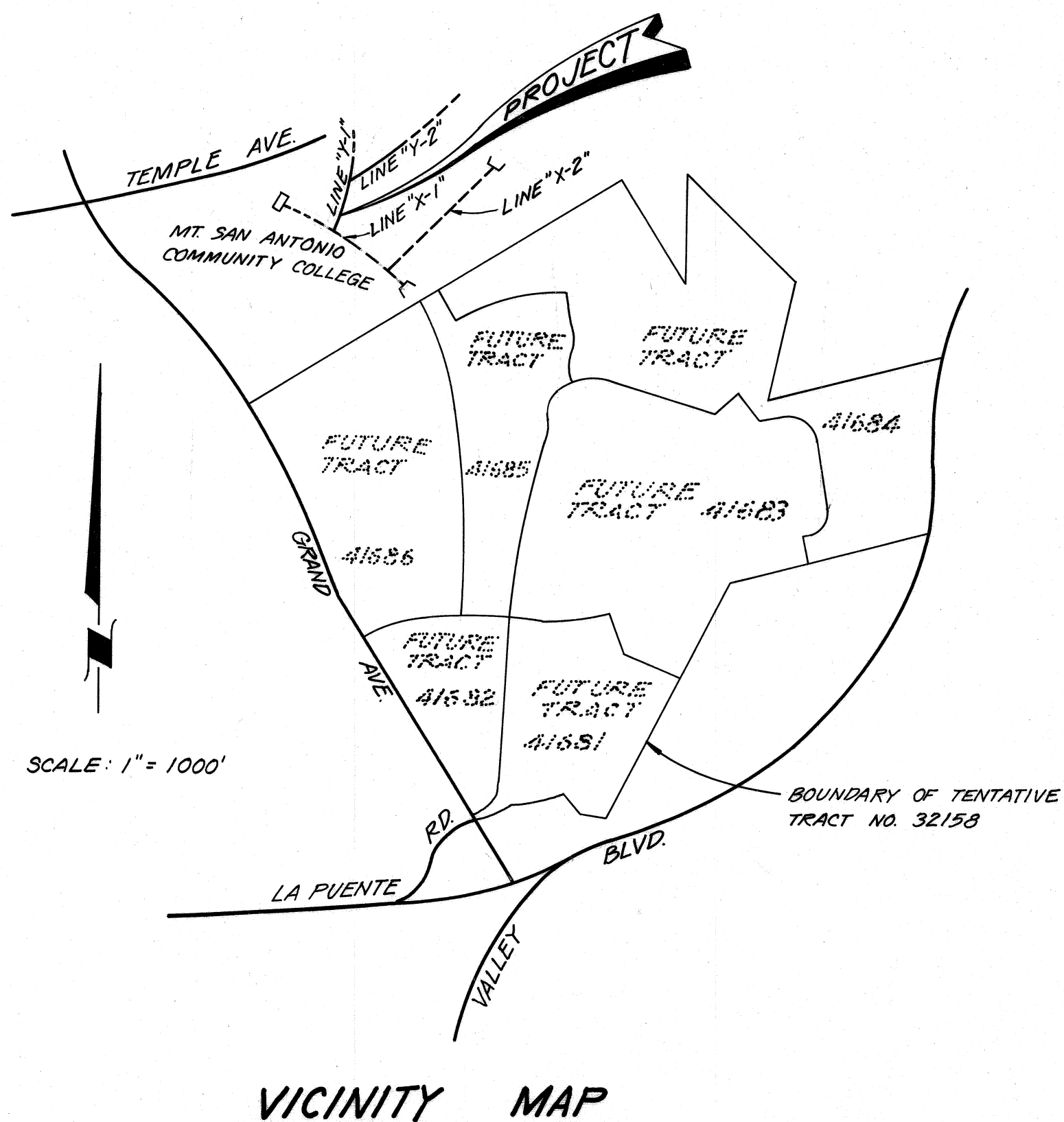


GENERAL NOTES FOR STORM DRAIN CONSTRUCTION

- ALL PIPE LAID IN OPEN TRENCH SHALL BE BEDDED IN ACCORDANCE WITH LAC.F.C.D. STD. DWG. NO. 2-D177.
- 48 HOURS PRIOR TO CONSTRUCTION, THE CONTRACTOR SHALL NOTIFY THE CITY ENGINEER (714) 594-9702 FOR INSPECTION.
- ALL WORK SHALL CONFORM TO THE REQUIREMENTS OF THE STANDARD SPECS FOR PUBLIC WORKS CONSTRUCTION 1982 EDITION, WITH 1983 SUPPLEMENT.
- ALL BACK FILL SHALL BE COMPACTED TO RELATIVE DENSITY OF 90%.
- ALL STATE AND LOCAL TRENCH SAFETY RULES WILL BE RIGIDLY ENFORCED. SHORING CALC. SHALL BE SUPPLIED TO AND APPROVED BY THE CITY ENGINEER PRIOR TO START OF CONSTRUCTION.
- THE CONTRACTOR MUST MAINTAIN ALL TRAFFIC SIGNS IN AN ERECT, READILY DISCERNIBLE POSITION AND FREE FROM OBSTRUCTION TO MOTORISTS VISION AND SHALL RESET SAME IN THE PROPER POSITION UPON COMPLETION OF CONSTRUCTION.
- EXISTING UTILITIES CROSSING THE STORM DRAIN SHALL BE SUPPORTED PER LAC.F.C.D. STD. 2-D173 AS DIRECTED BY THE CITY ENGINEER.
- R.C.P. SHALL BE MANUFACTURED AND INSPECTED IN ACCORDANCE WITH SECTION 207-2.6, 2.7, 2.8 AND 2.9 OF THE STANDARD SPECIFICATIONS FOR PUBLIC WORKS CONSTRUCTION (1982 EDITION, WITH 1983 SUPPLEMENT).
- THE CONTRACTOR SHALL FURNISH A LETTER OF CERTIFICATION FROM THE PIPE MANUFACTURER AS TO TEST RESULTS OF PIPE INSTALLED.
- ALL PIPE LENGTH SHOWN ARE HORIZONTAL PROJECTIONS, UNLESS OTHERWISE NOTED.
- ALL CONCRETE SHALL HAVE A 28 DAY COMPRESSIVE STRENGTH OF 3000 P.S.I.
- ALL REINFORCING STEEL SHALL CONFORM TO ASTM A-615-GRADE 60.
- THE ENGINEER, VTN, HAS INVESTIGATED ALL AVAILABLE RECORDS OF THE CITY AND OF THE UTILITY COMPANIES INVOLVED, AND ALL KNOWN SUBSTRUCTURES ARE SHOWN HEREON. IT SHALL BE THE RESPONSIBILITY OF THE CONTRACTOR TO LOCATE ALL SUBSTRUCTURES WHETHER OR NOT SHOWN HEREON, AND TO PROTECT THEM FROM DAMAGE. THE CONTRACTOR SHALL BEAR THE TOTAL EXPENSE OF REPAIR OR REPLACEMENT OF SAID SUBSTRUCTURES DAMAGED BY HIS OPERATION IN CONNECTION WITH THE PROSECUTION OF SAID WORK.
- THIS STORM DRAIN WILL NOT BE ACCEPTED FOR MAINTENANCE UNTIL THE STREETS HAVE BEEN PAVED, MANHOLES BROUGHT UP TO GRADE, AND THE SYSTEM IS CLEANED TO THE SATISFACTION OF THE CITY ENGINEER.
- ELEVATIONS ARE IN FEET ABOVE U.S.C.G.S. MEAN SEA LEVEL DATUM OF 1929.
- FINISH ALL EXPOSED EDGES W/3/4" CHAMFER.
- ALL STEEL THAT IS TO BE CONTINUOUS SHALL HAVE A MINIMUM LAP AT SPLICES OF 30 BAR DIAMETERS.
- ALL PIPE SHALL BE EMBEDDED A MIN. OF 5' INTO HEADWALLS OR STRUCTURES.

QUANTITY ESTIMATE

NO.	ITEM	QUANTITY	UNIT
①	M.H. NO. 1 PER LAC.F.C.D. STD. DWG. NO. 2-D102	3	EA.
②	36" RCP 1400-D	569.00	L.F.
③	30" RCP 1400-D	384.00	L.F.
④	PIPE CONNECTION PER LAC.F.C.D. STD. DWG. NO. 2-D190 CASE 3	2	EA.
⑤	RECONST. A.C. DRIVEWAY & PARKING LOT	2500	SQ. FT.
⑥	BREAK EX. 51" RCP TO JOIN 36" PIPE AND CONST. JCT. STR. NO. 2 PER LAC.F.C.D. STD. DWG. NO. 2-D112		L.S.
⑦	CONCRETE COLLAR PER LAC.F.C.D. STD. DWG. NO. 2-D393	1	EA.



SHORING FOR COMBINED VERTICAL AND SLOPING EXCAVATIONS

(PER CAL. OSHA PLATE C-23 & PLATE C-24-C) AND SCALE: 1" = 40'
(PER LAC.F.C.D. STD. DRG. NO. 2-D399)

STRUCTURAL NOTES

- EXPOSED EDGES OF CONCRETE MEMBERS SHALL BE CHAMFERED TO 1/4" RADIUS.
- ALL BAR ENDS AND HOLES SHALL CONFORM TO AMERICAN CONCRETE INSTITUTE "BUILDING CODE REQUIREMENTS FOR REINFORCED CONCRETE" (ACI 318-77).
- PLANS OF REINFORCEMENT SHALL CONFORM TO THE PRESCRIBED "MINIMUM" ACTIVITIES "BUILDING CODE REQUIREMENTS FOR REINFORCED CONCRETE" (ACI 318-77).

BASIS OF BEARINGS:
N 22° 50' 05" W FOR THE CENTERLINE OF GRAND AVE. AS SHOWN ON TRACT NO. 40715 RECORDED IN BOOK 998, PAGES 80 THROUGH 84 INCLUSIVE OF MAPS, RECORDS OF LOS ANGELES COUNTY.

BENCH MARK:
BM C.G. 1781 ELEV. 617.01
S.D.B.M. TAG N.E. COR. OF CONCRETE HEADWALL 24 FT NORTH & LA PUENTE ROAD 1/2 MILES WEST OF GRAND AVE. COVINA QUAD 1973.

IF CONSTRUCTION OF IMPROVEMENTS AS SHOWN HEREON ARE NOT COMMENCED WITHIN 18 MONTHS OF APPROVAL DATE, THESE PLANS ARE SUBJECT TO REVIEW BY THE CITY.

NOTICE TO CONTRACTOR:

CONTRACTOR AGREES THAT HE SHALL ASSUME SOLE AND COMPLETE RESPONSIBILITY FOR JOB SITE CONDITIONS DURING THE COURSE OF CONSTRUCTION OF THIS PROJECT, INCLUDING SAFETY OF ALL PERSONS AND PROPERTY THAT THIS REQUIREMENT SHALL APPLY CONTINUOUSLY AND NOT BE LIMITED TO NORMAL WORKING HOURS AND THAT THE CONTRACTOR SHALL DEFEND, INDEMNIFY AND HOLD THE OWNER AND THE ENGINEER HARMLESS FROM ANY AND ALL LIABILITY, REAL OR ALLEGED, IN CONNECTION WITH THE PERFORMANCE OF WORK ON THIS PROJECT, EXCEPTING FOR LIABILITY ARISING FROM THE SOLE NEGLIGENCE OF THE OWNER OR THE ENGINEER.

APPROVED BY:
CITY OF WALNUT
CITY ENGINEER

Ronald L. Kranzer
RONALD L. KRANZER RBE18503 DATE

PLANS PREPARED BY
VTN CONSOLIDATED INC.
2301 CAMPUS DRIVE
IRVINE, CA. 92713 (714) 851-5200

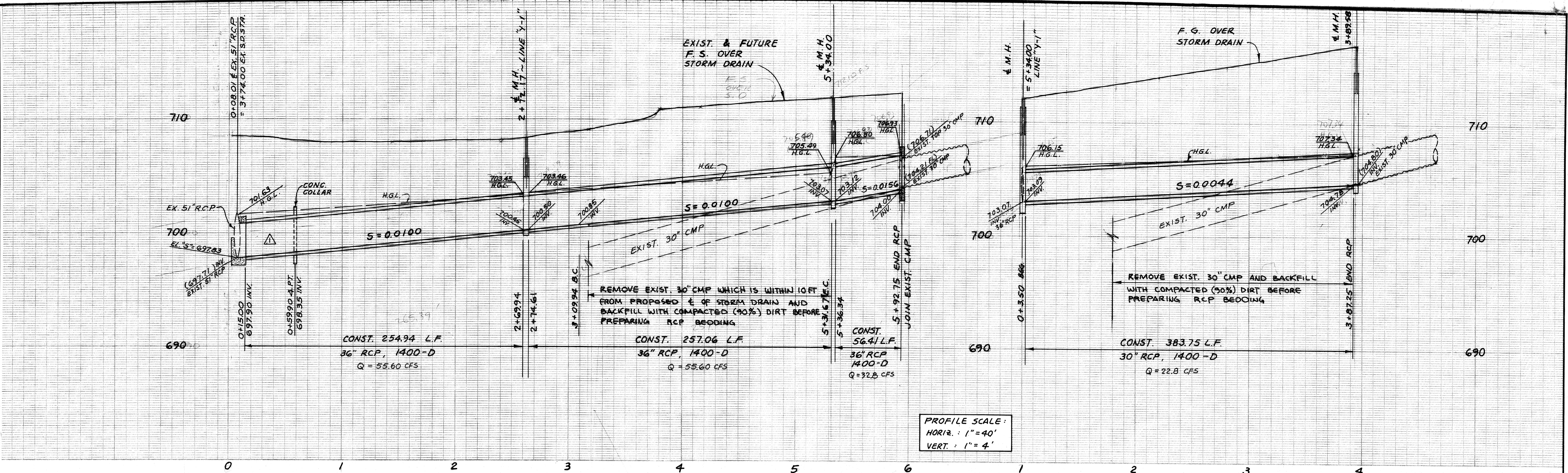
SIGNATURE *Pang-Mou Lin* 7/3/84
PANG-MOU LIN
RCE 22391 DATE

NO.	DATE	REVISIONS	APP.	DATE
①	10-10-84	REALIGNMENT LINE "Y-1" FROM STA. 0+080.01 E. INT. TO STA. 0+189.00. BREAK EX. 31" RCP AND JOIN 36" RCP. ADD JCT. STA. N/E PER LAC.F.C.D. STD. DWG. NO. 2-D112 AND CONE. COLLAR PER STD. DWG. NO. 2-D393. CONSTRUCTION NOTES NO. 6 & 7. (SHEET NO. 2) AND REVISE QUANTITY ESTIMATE (SHEET NO. 1).		10/11/84

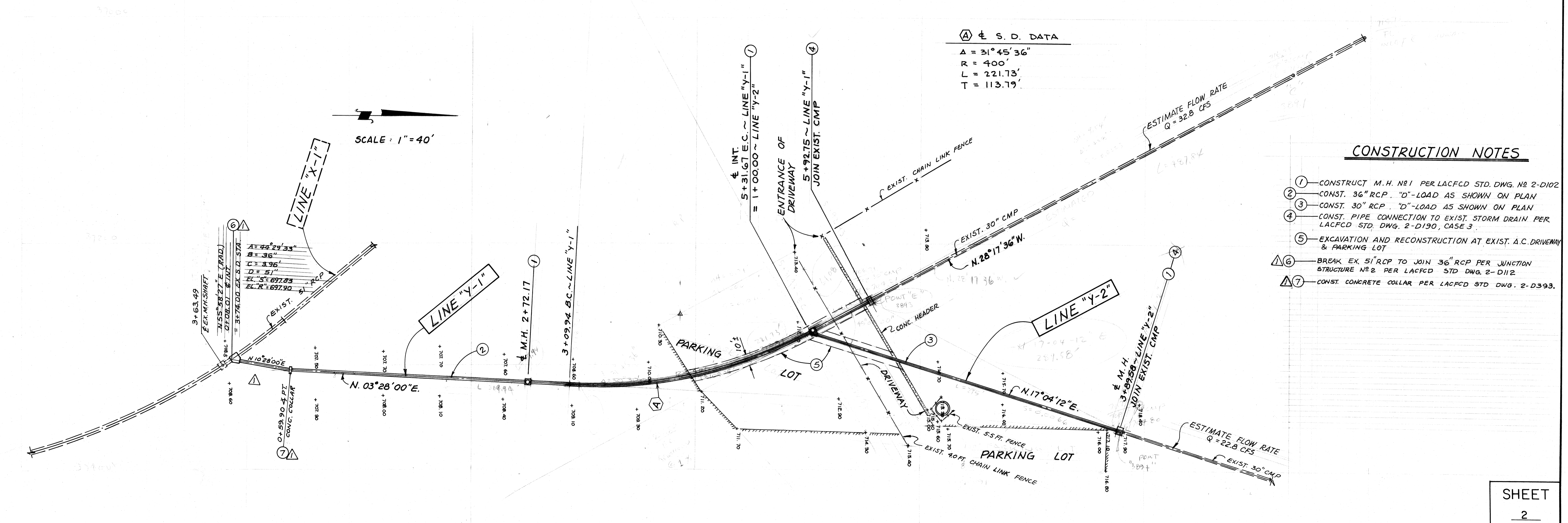
CITY OF WALNUT

TENTATIVE TRACT No. 32158
OFF-SITE STORM DRAINS
LINE "Y-1" AND
LINE "Y-2"

SHEET
1
OF
2



PROFILE SCALE:
 HORIZ. : 1" = 40'
 VERT. : 1" = 4'



Ⓐ S. D. DATA
 $\Delta = 31^\circ 45' 36''$
 $R = 400'$
 $L = 221.73'$
 $T = 113.79'$

CONSTRUCTION NOTES

- ① - CONSTRUCT M.H. NO 1 PER LACFCD STD. DWG. NO 2-D102
- ② - CONST. 36" RCP. "D"-LOAD AS SHOWN ON PLAN
- ③ - CONST. 30" RCP. "D"-LOAD AS SHOWN ON PLAN
- ④ - CONST. PIPE CONNECTION TO EXIST. STORM DRAIN PER LACFCD STD. DWG. 2-D190, CASE 3
- ⑤ - EXCAVATION AND RECONSTRUCTION AT EXIST. A.C. DRIVEWAY & PARKING LOT
- ⑥ - BREAK EX. 51" RCP TO JOIN 36" RCP PER JUNCTION STRUCTURE NO 2 PER LACFCD STD. DWG. 2-D112
- ⑦ - CONST. CONCRETE COLLAR PER LACFCD STD. DWG. 2-D393.

NO.	DATE	REVISIONS	APP.	DATE
10-10-84		REALIGNMENT LINE "Y-1" FROM STA. 0+08.01 INT. TO STA. 0+59.90, BREAK EX. 51" RCP TO JOIN 36" PIPE, ADD JCT. STR. NO 2 PER LACFCD STD. DWG. NO 2-D112, CONC. COLLAR PER STD. DWG. NO. 2-D393, CONSTRUCTION NOTES NO 6 & 7 AND REVISE PLAN AND PROFILE.		

SHEET
 2
 OF
 2

145B