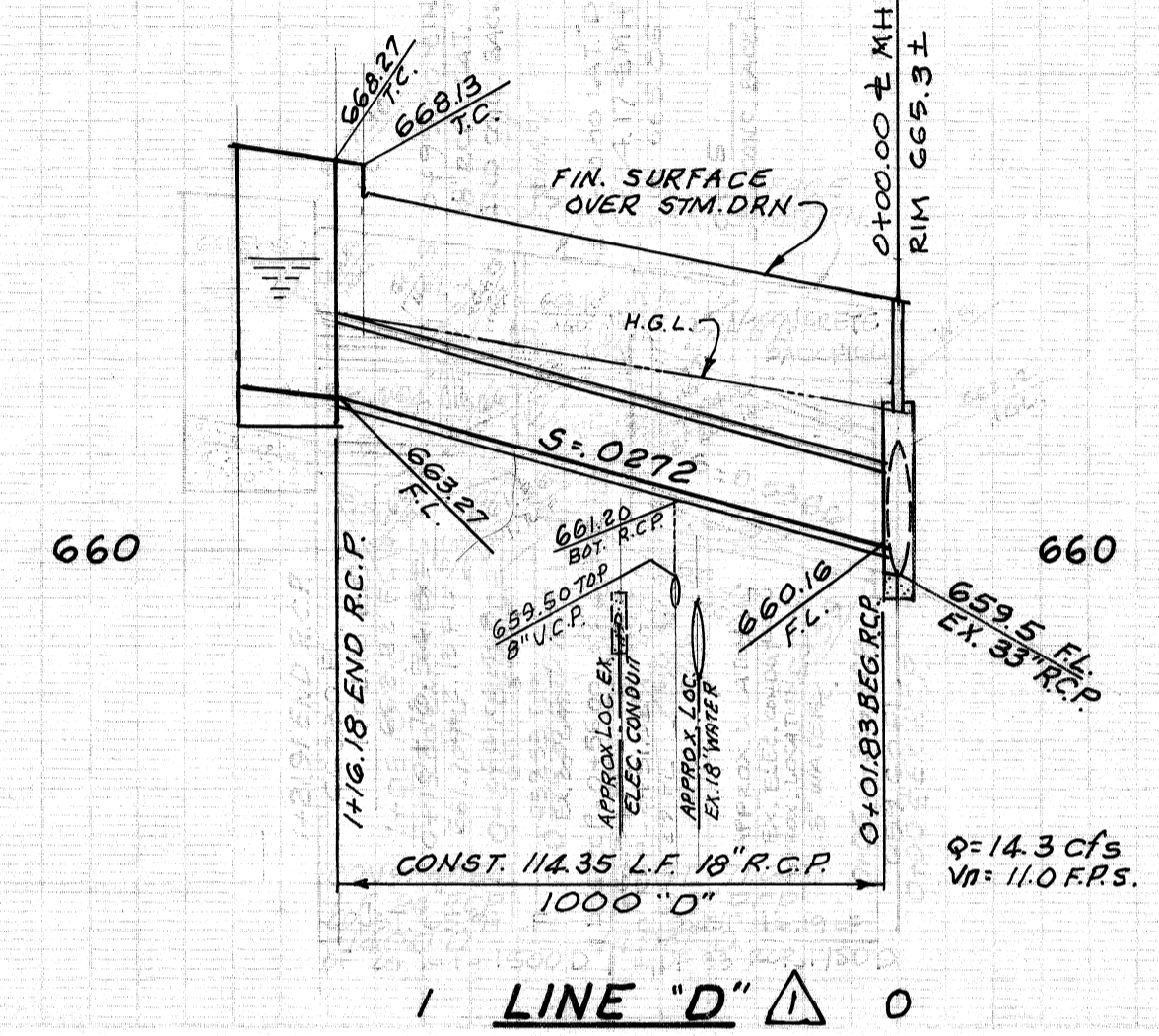
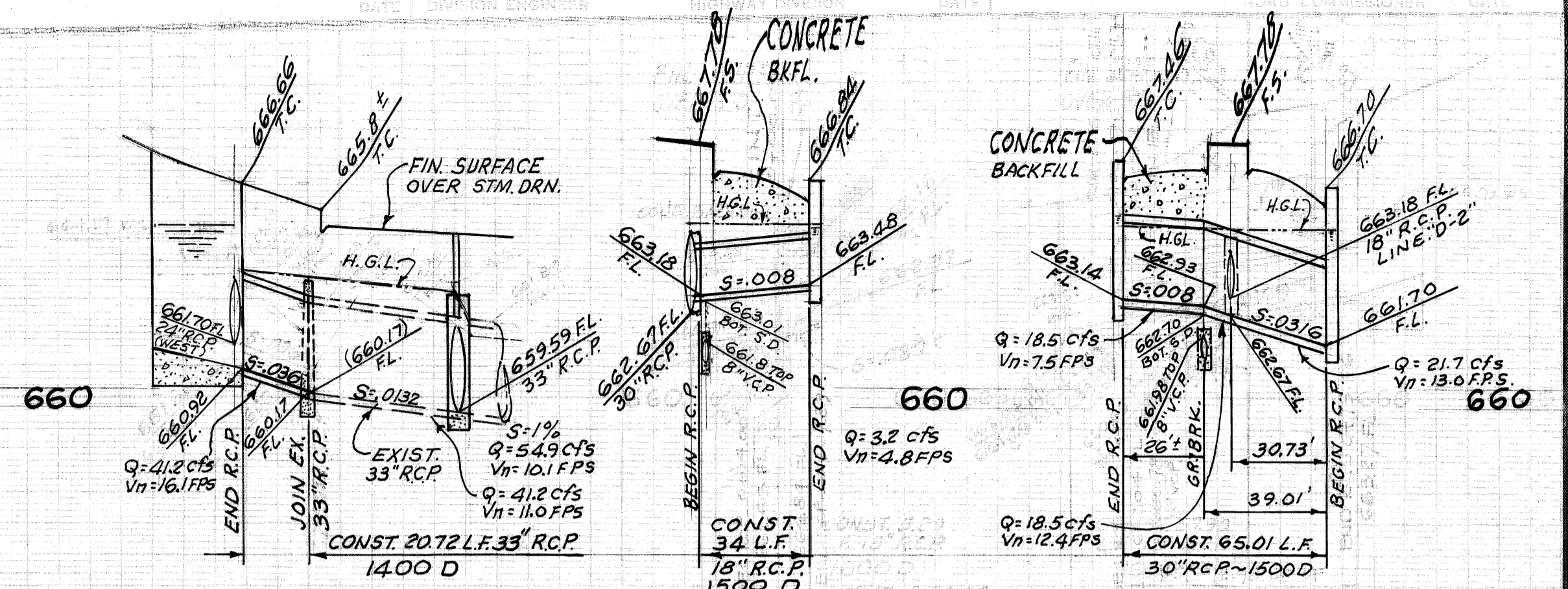
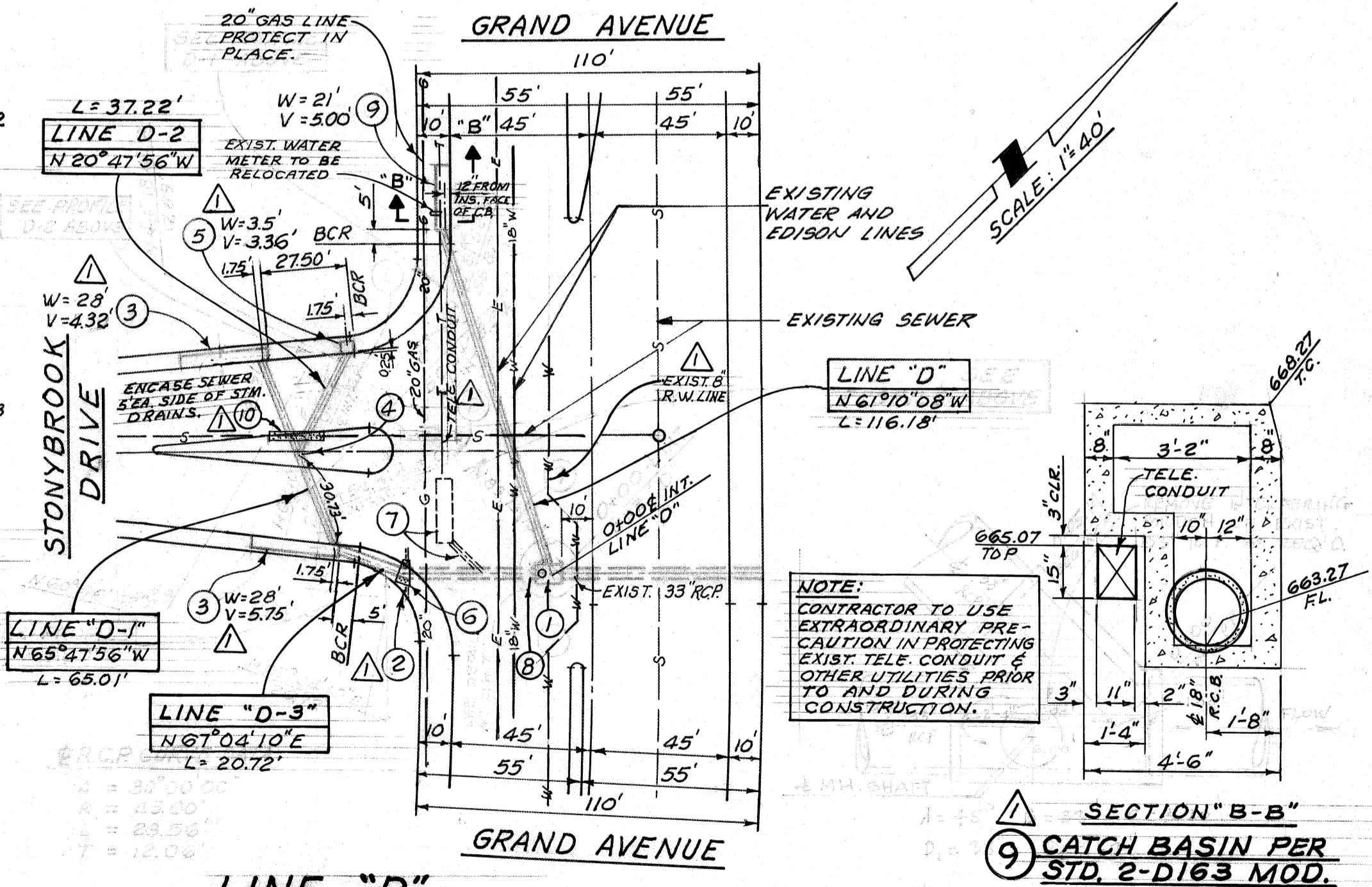


- ALL PIPE LAID IN OPEN TRENCH SHALL BE BEDDED IN ACCORDANCE WITH L.A. COUNTY F.C.D. STD. PLAN 2D-177
- 24 HOURS PRIOR TO CONSTRUCTION, THE CONTRACTOR SHALL NOTIFY THE CITY ENGINEER, (714)594-9702
- ALL WORK SHALL CONFORM TO THE REQUIREMENTS OF THE STANDARD SPECS FOR PUBLIC WORKS CONSTRUCTION & SUPPLEMENT, 1992 EDITION, 1983 SUP.
- ALL BACKFILL SHALL BE COMPACTED TO RELATIVE DENSITY OF 90%.
- ALL STATE AND LOCAL TRENCH SAFETY RULES WILL BE RIGIDLY ENFORCED.
- THE CONTRACTOR MUST MAINTAIN ALL TRAFFIC SIGNS IN AN ERECT, READILY DISCERNIBLE POSITION AND FREE FROM OBSTRUCTIONS TO MOTORIST'S VISION, AND SHALL RESET SAME IN THE PROPER POSITION UPON COMPLETION OF CONSTRUCTION.
- EXISTING UTILITIES CROSSING THE STORM DRAIN SHALL BE SUPPORTED PER LACFCO STD. 2-D173 AS DIRECTED BY THE CITY ENGINEER.
- R.C.P. SHALL BE MANUFACTURED AND INSPECTED IN ACCORDANCE WITH SECTION 207-2.6, 2.7, 2.8 AND 2.9 OF THE STANDARD SPECIFICATIONS FOR PUBLIC WORKS CONSTRUCTION (1979 EDITION), 1980 SUP.
- THE CONTRACTOR SHALL FURNISH A LETTER OF CERTIFICATION FROM THE PIPE MANUFACTURER AS TO TEST RESULTS OF PIPE INSTALLED.
- ALL PIPE LENGTHS SHOWN ARE HORIZONTAL PROJECTIONS, UNLESS OTHERWISE NOTED.
- ALL CONCRETE SHALL HAVE A 28 DAY COMPRESSIVE STRENGTH OF 3000 PSI.
- ALL REINFORCING STEEL SHALL CONFORM TO ASTM A-615-GRADE 60.
- THE ENGINEER, VTN, HAS INVESTIGATED ALL AVAILABLE RECORDS OF THE CITY AND OF THE UTILITY COMPANIES INVOLVED, AND ALL KNOWN SUBSTRUCTURES ARE SHOWN HEREON. IT SHALL BE THE RESPONSIBILITY OF THE CONTRACTOR TO LOCATE ALL SUBSTRUCTURES, WHETHER OR NOT SHOWN HEREON, AND TO PROTECT THEM FROM DAMAGE. THE CONTRACTOR SHALL BEAR THE TOTAL EXPENSE OF REPAIR OR REPLACEMENT OF SAID SUBSTRUCTURES DAMAGED BY HIS OPERATIONS IN CONNECTION WITH THE PROSECUTION OF SAID WORK.
- THIS STORM DRAIN WILL NOT BE ACCEPTED FOR MAINTENANCE UNTIL THE STREETS HAVE BEEN PAVED, MANHOLES BROUGHT UP TO GRADE, AND THE SYSTEM IS CLEANED TO THE SATISFACTION OF THE CITY ENGINEER.
- ELEVATIONS ARE IN FEET ABOVE U.S.C. G.S. MEAN SEA LEVEL DATUM OF 1929.
- FINISH ALL EXPOSED EDGES WITH 3/4" CHAMFER.
- ALL STEEL THAT IS TO BE CONTINUOUS, SHALL HAVE A MINIMUM LAP AT SPLICES OF 30 BAR DIAMETERS.
- ALL PIPE SHALL BE EMBEDDED A MINIMUM OF 5 INCHES INTO HEADWALLS OR OTHER STRUCTURES.



NOTE
 CONTRACTOR TO VERIFY LOCATION AND ELEV. OF EXIST. UTILITIES IN FIELD PRIOR TO CONSTRUCTION.

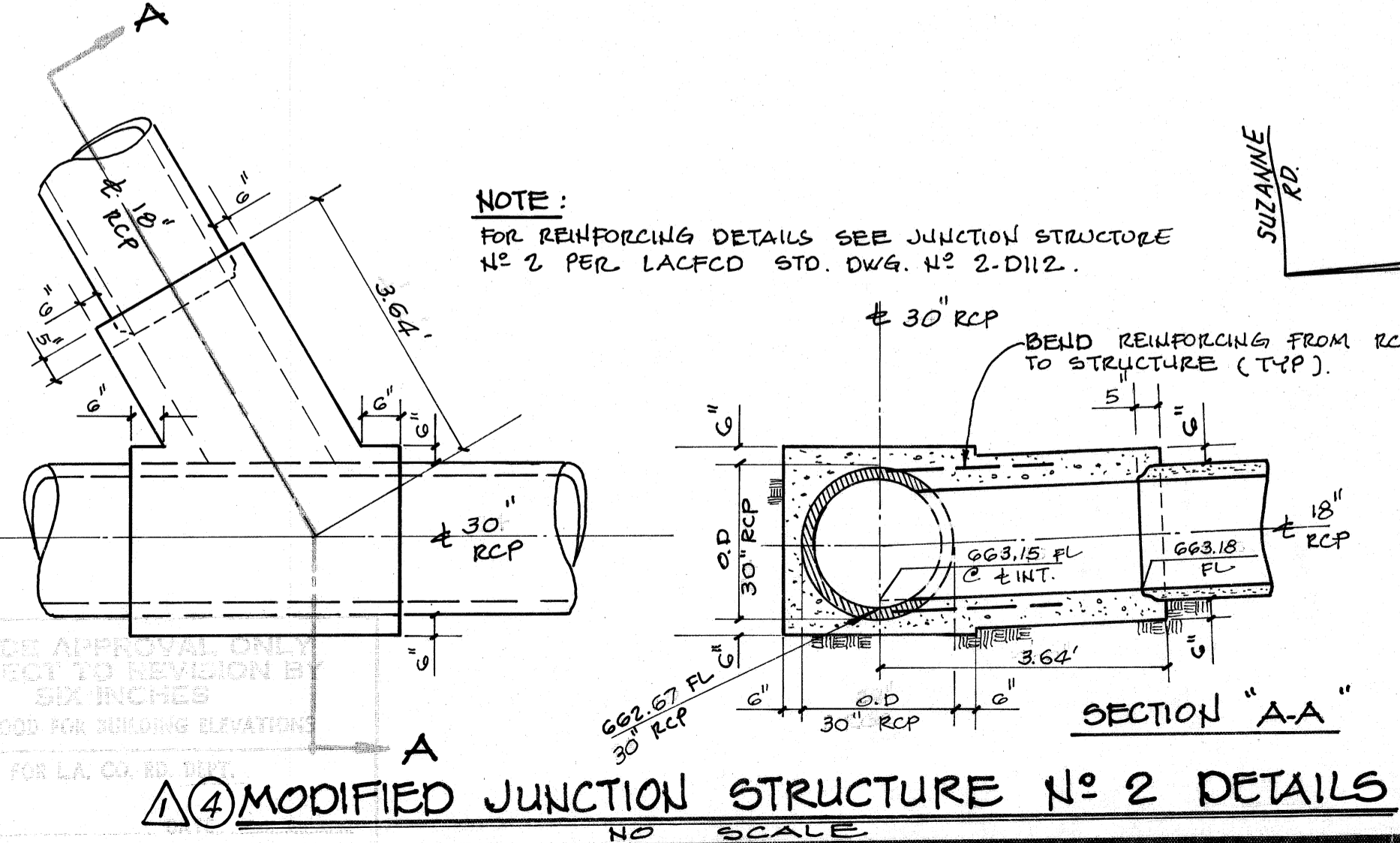
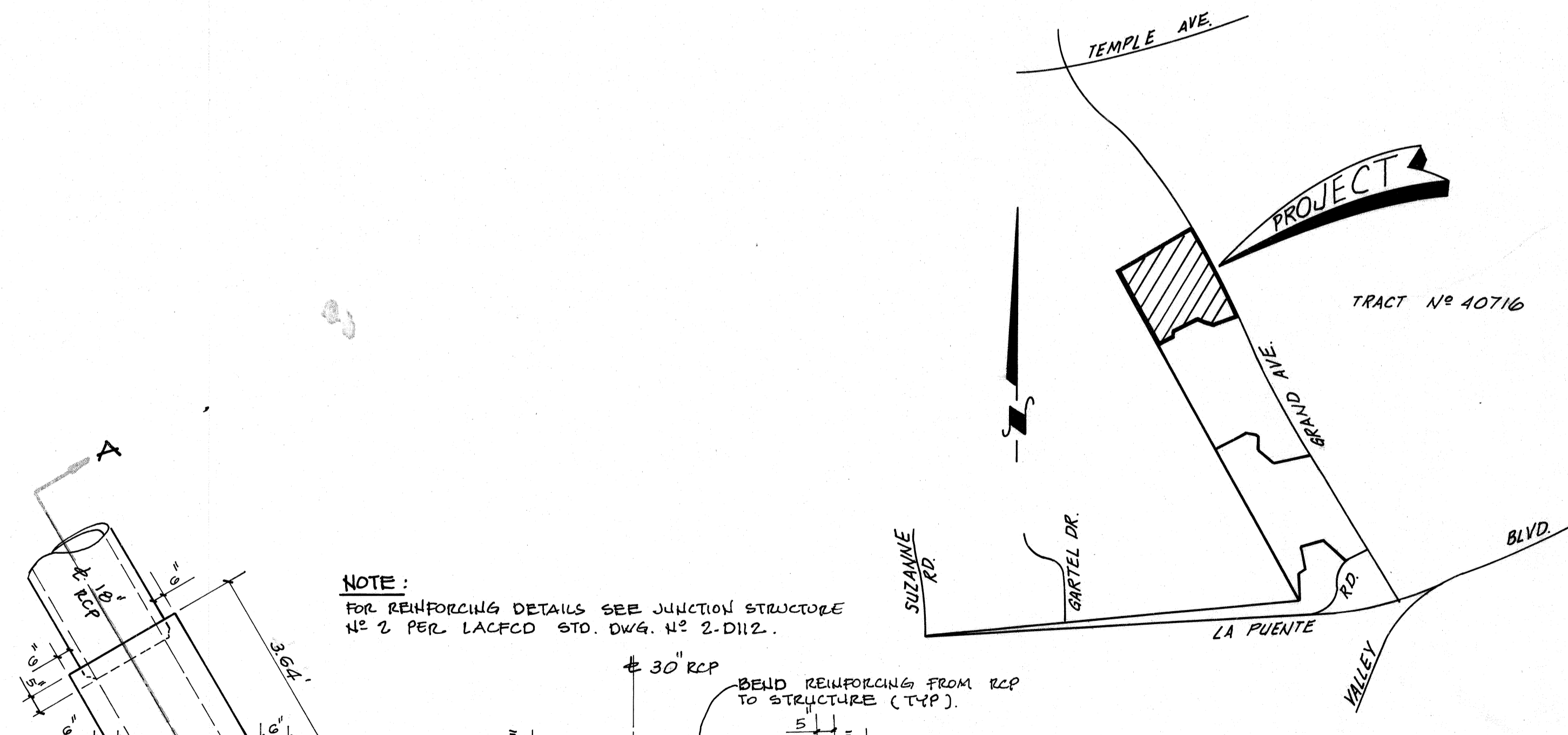
- HORIZ. 1" = 40'
 VERT. 1" = 4'
- CONSTRUCTION NOTES:**
- CONST. MANHOLE N° 1 PER LACFCO STD. 2-D102
 - REMOVE EXISTING HEAD WALL.
 - CONST. C.B. N° 3 PER LACFCO STD. 2-D163. SEE PLAN FOR W & V DIMENSIONS. LOCAL DEPRESSION PER LACFCO STD. 68-01.
 - CONST. MODIFIED J.S. N° 2 PER DETAIL HEREON.
 - CONST. C.B. N° 1 PER LACFCO STD. 2-D160. W=3.5; V PER PLAN, C & G TRANSITION PER LACFCO STD. 66-03.
 - CONST. CONC. COLLAR PER LACFCO STD. 2-D393
 - REMOVE EXIST. 21" C.B., BRICK AND MORTAR SEAL UP-STREAM END OF EXIST. 18" R.C.P.
 - REMOVE INTERFERING PORTION OF EXIST. 33" R.C.P. & CONSTRUCT MANHOLE.
 - CONST. CATCH BASIN N° 3 PER LACFCO STD. 2-D163 AND MOD. PER DET. AT RIGHT.
 - CONST. 15' L.F. OF SEWER ENCASEMENT PER STD. S-23 CASE IV.



NOTE:
 IF CONSTRUCTION OF IMPROVEMENTS AS SHOWN HEREON ARE NOT COMMENCED WITHIN 18 MONTHS OF APPROVAL DATE, THESE PLANS ARE SUBJECT TO REVIEW BY THE CITY.

APPROVED BY:
 CITY OF WALNUT
 CITY ENGINEER
 Ronald L. Krutzler
 18503 2-20-86
 RONALD L. KRUTZLER PCE DATE

NOTE: VERIFY LOCATION AND ELEVATION OF EXISTING UTILITIES PRIOR TO CONSTRUCTION.



NOTE:
 FOR REINFORCING DETAILS SEE JUNCTION STRUCTURE N° 2 PER LACFCO STD. DWG. N° 2-D112.

PLANS PREPARED BY:
 V.T.N. CONSOLIDATED INC.
 2301 CAMPUS DRIVE
 IRVINE, CA. 92713 (714) 851-5200

REVISIONS	
REVISED STORM DRAIN ALIGNMENT DUE TO INTERFERING TELE. CONDUIT. "AS-BUILT"	RE. No. 24573

LOS ANGELES CITY OF WALNUT DEPARTMENT
STORM DRAIN
 MISCELLANEOUS TRANSFER DRAIN N°