

**PLAN AND PROFILE
OF
WALNUT PRIVATE DRAIN NO 104
NEW WALNUT HIGH SCHOOL
LA PUENTE UNION HIGH SCHOOL DISTRICT
SHEET 1 OF 2 SHEETS
PREPARED IN THE OFFICES OF
SIDELCO-Consulting Civil Engineers
1125 W. 6TH STREET LOS ANGELES
CALIFORNIA**

BY: Thomas S. Buenafe DATE: 11-28-67
THOMAS S. BUENAFE REV: 9/18/68
 R.C.E. 14094

GENERAL NOTES

- ELEVATIONS ARE IN FEET ABOVE U.S.G.S. MEAN SEA LEVEL DATUM (REF. L.A. COUNTY RD. DEPT. 1960)
- ALL WORK SHALL BE IN ACCORDANCE WITH THE STD. SPECS. FOR PUBLIC WORKS CONSTRUCTION 1967 ED. AND THE CITY OF WALNUT AND SHALL BE PROSECUTED ONLY IN THE PRESENCE OF THE CITY ENGINEER.
- APPROVAL OF THIS PLAN BY THE CITY ENGINEER DOES NOT CONSTITUTE A REPRESENTATION AS TO THE ACCURACY OF THE LOCATION OR THE EXISTENCE OR NON-EXISTENCE OF ANY UNDERGROUND UTILITY, PIPE OR STRUCTURE WITHIN THE LIMITS OF THIS PROJECT. THIS NOTE APPLIES TO ALL SHEETS.
- ALL REINFORCED CONCRETE PIPE SHALL BE BEDDED IN ACCORDANCE WITH CASE III BEDDING PER LOS ANGELES COUNTY FLOOD CONTROL DISTRICT STD. DVG. 2-D177, UNLESS OTHERWISE NOTED.
- THE CONTRACTOR SHALL NOTIFY THE CITY ENGINEER'S OFFICE ED-31293 AT LEAST 24 HOURS BEFORE STARTING ANY WORK UNDER THIS CONTRACT.
- ALL BACKFILL AND FILL TO BE USED AS SUBGRADE SHALL BE COMPACTED TO A RELATIVE DENSITY OF 90% AT OPTIMUM MOISTURE.
- ALL STATE AND LOCAL TRENCH SAFETY ORDERS WILL BE RIGIDLY ENFORCED.
- ALL CONCRETE WILL BE DESIGNED TO DEVELOP A 28-DAY STRENGTH OF AT LEAST 3,000 POUNDS PER SQUARE INCH IN COMPRESSION.
- NO CONCRETE SHALL BE PLACED UNTIL THE FORMS AND THE REINFORCING STEEL HAS BEEN PLACED, INSPECTED AND APPROVED BY THE CITY ENGINEER.
- THE CONTRACTOR SHALL NOTIFY THE LOS ANGELES COUNTY FLOOD CONTROL DISTRICT AREA INSPECTOR BY PHONE AT HI-75937 TWENTY FOUR (24) HOURS PRIOR TO CONSTRUCTION.
- THE STORM DRAIN WILL NOT BE ACCEPTED FOR MAINTENANCE UNTIL THE STREETS HAVE BEEN PAVED, MANHOLES BROUGHT UP TO GRADE AND THE SYSTEM IS CLEANED TO THE SATISFACTION OF THE CITY ENGINEER AND STORM DRAIN BOND ISSUE PROJECT NO. 8301 IS OPERATIONAL.

* CASE AD BEDDING PER COUNTY ENGINEER STD. DVG. D-54

BENCH MARK 56 1776
 ROAD DEPT. BM TAG IN CONCRETE HEADWALL
 24 FEET NORTHERLY OF C/L LA PUENTE
 ROAD AND 198 FEET EASTERLY OF C/L
 SUZANNE ROAD.
 ELEV. 584.272 COVINA (1960)

(MISCELLANEOUS TRANSFER DRAIN NO. 221)

CITY OF WALNUT CALIFORNIA
 APPROVED BY: E. J. EPPERSON 4-11-68
ELLSWORTH J. EPPERSON CITY ENGINEER

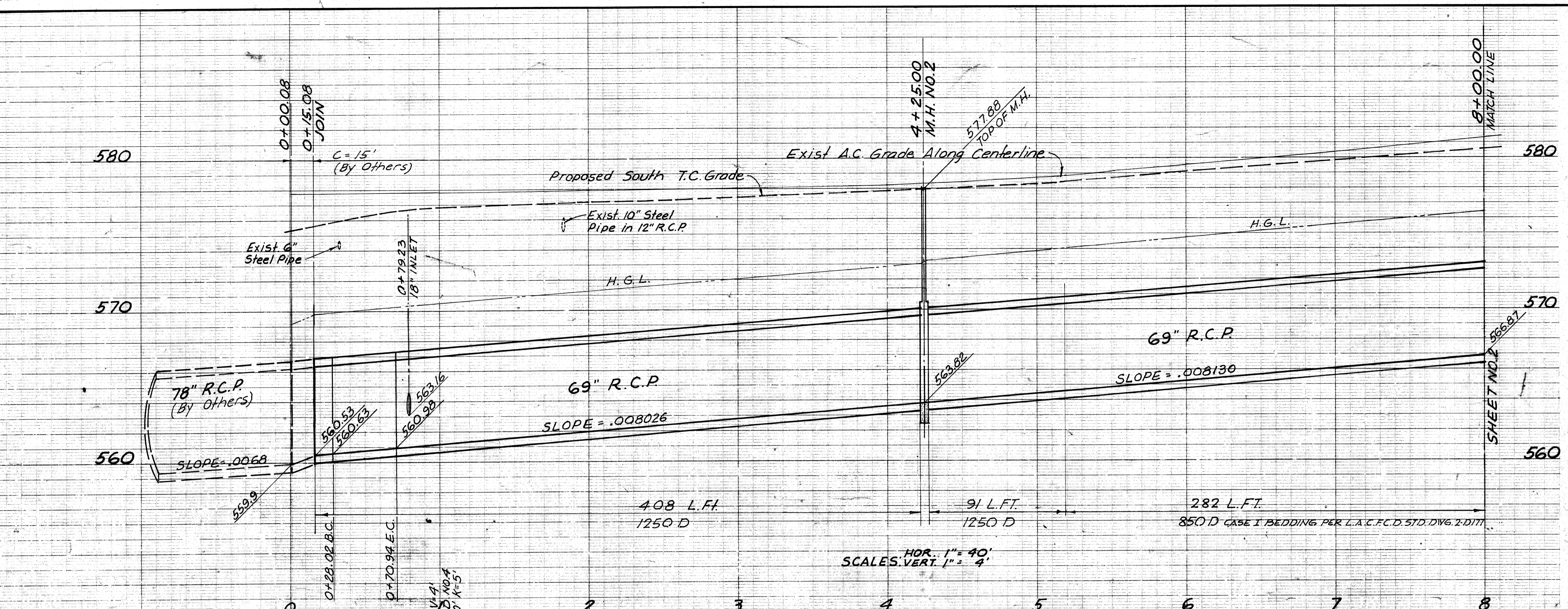
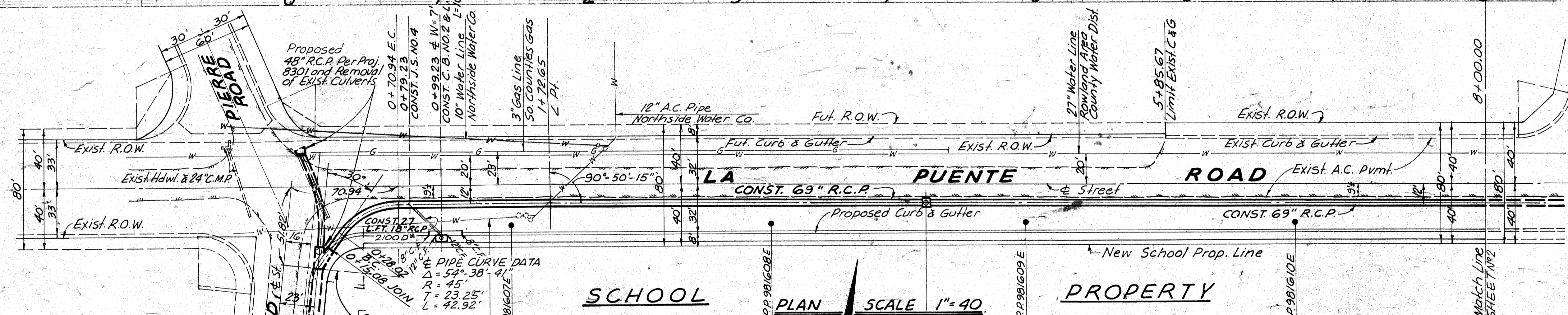
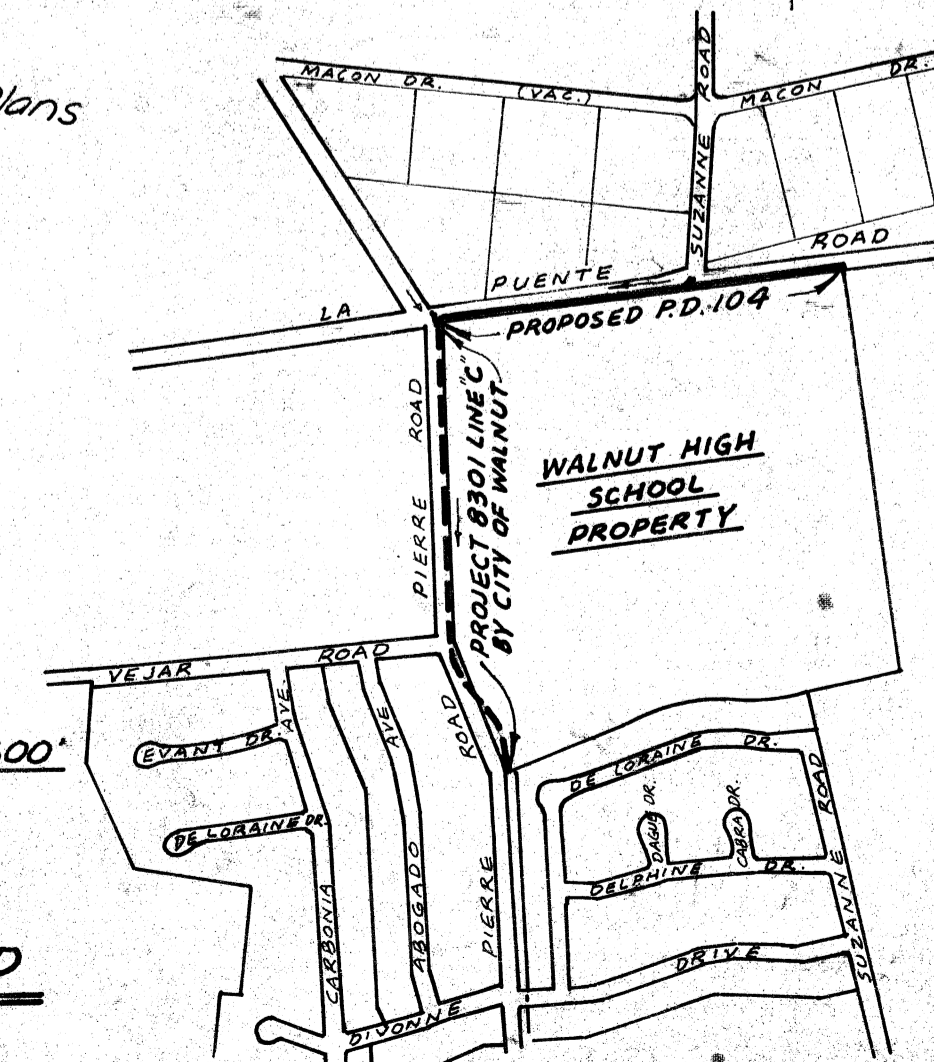
SHEET NO.
C-11

SIDELCO-Consulting Civil Engineers
 DESIGNED: M.P. DRAWN: M.P. CHECKED: C.S.L.

**HYDRAULIC PROPERTIES
25 YEAR FREQUENCY**

Station to Station	Q (cfs)	Size	n	Dn	Vn (FPS)	S _n
13+21.27	10+63.09	160	63"	.013	Full	7.39 .002917
10+63.09	9+95.00	260	63"	.013	Full	12.01 .007703
9+95.00	8+52.09	278	63"	.013	Full	12.84 .008807
8+52.09	4+25.00	345	69"	.013	Full	13.28 .008309
4+25.00	0+15.08	345	69"	.013	Full	13.28 .008309
1+13.78 N	0+00 N	67	39"	.013	Full	8.08 .00661

KEY MAP



**PLAN AND PROFILE
OF
WALNUT PRIVATE DRAIN NO 104
NEW WALNUT HIGH SCHOOL
LA PUENTE UNION HIGH SCHOOL DISTRICT**

SHEET 2 OF 2 SHEETS
PREPARED IN THE OFFICES OF
SIDELCO-Consulting Civil Engineers
1125 W. 6TH STREET LOS ANGELES, CALIFORNIA

BY: Thomas S. Buenafe DATE: 11-28-67
THOMAS S. BUENAFE REV. 9/10/69
R.C.E. 14094

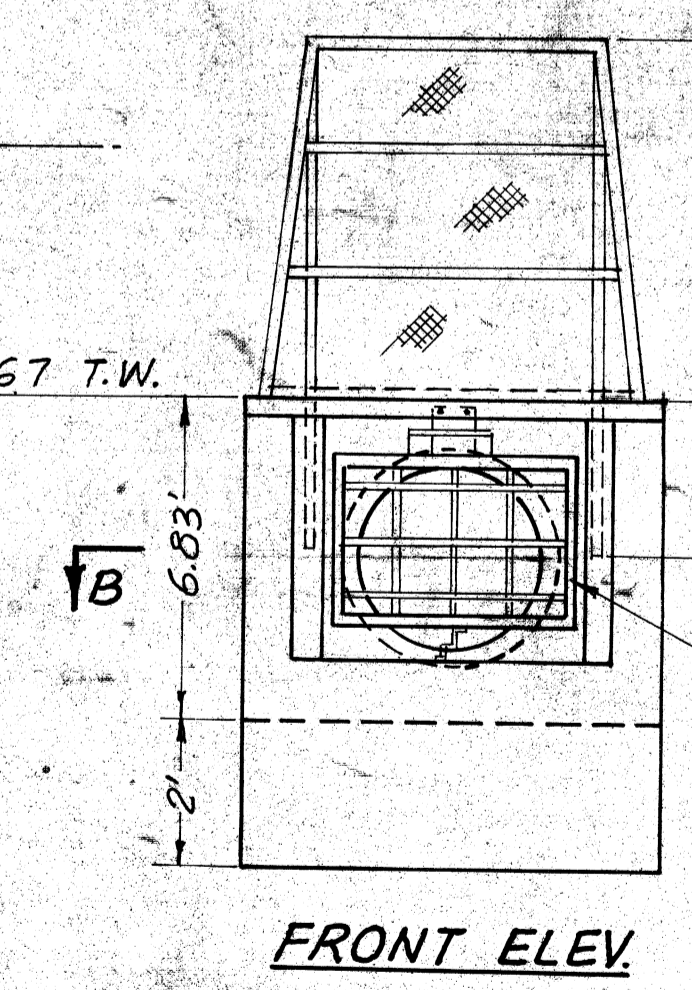
GENERAL NOTES (Cont'd)

12. ALL UTILITY RELOCATIONS SHALL BE ACCOMPLISHED AT NO COST TO THE CITY OF WALNUT.
13. BEFORE WORK CAN BE STARTED, THE CONTRACTOR MUST OBTAIN A PERMIT FROM THE CITY ENGINEER AND FROM THE LOS ANGELES COUNTY FLOOD CONTROL DISTRICT AT HIS OWN EXPENSE. THE LA PUENTE UNION HIGH SCHOOL DISTRICT SHALL PAY FOR ALL INSPECTION FEES.
14. IF THE HIGH SCHOOL DRAIN IS BUILT PRIOR TO PROJECT NO 8301, CONTRACTOR SHALL SEAL ALL INLETS.
15. THE LOCATION OF ALL EXISTING UTILITIES INDICATED ON THESE DRAWINGS ARE TAKEN FROM EXISTING PUBLIC AND UTILITY COMPANY RECORDS. IT SHALL BE THE SOLE RESPONSIBILITY OF THE CONTRACTOR TO DETERMINE THE EXACT LOCATION AND ELEVATION OF ALL EXISTING UTILITIES AND/OR FACILITIES OTHER THAN THOSE SHOWN ON THE DRAWINGS. THE CONTRACTOR SHALL BE RESPONSIBLE FOR TAKING APPROPRIATE MEASURES TO PROTECT SAID EXISTING UTILITIES AND/OR FACILITIES FROM DAMAGE IN ACCORDANCE WITH THE REQUIREMENTS OF THE GOVERNING AGENCY HAVING JURISDICTION AND/OR THE UTILITY COMPANY INVOLVED.
16. THE CONTRACTOR SHALL USE CAUTION IN WORKING NEAR THE EXISTING 27" WATER MAIN AND SHALL NOTIFY MR. OLIVER ENGLE AT 697-1726 AT LEAST THREE (3) DAYS PRIOR TO ANY EXCAVATION TO BE PERFORMED NEAR MAIN.

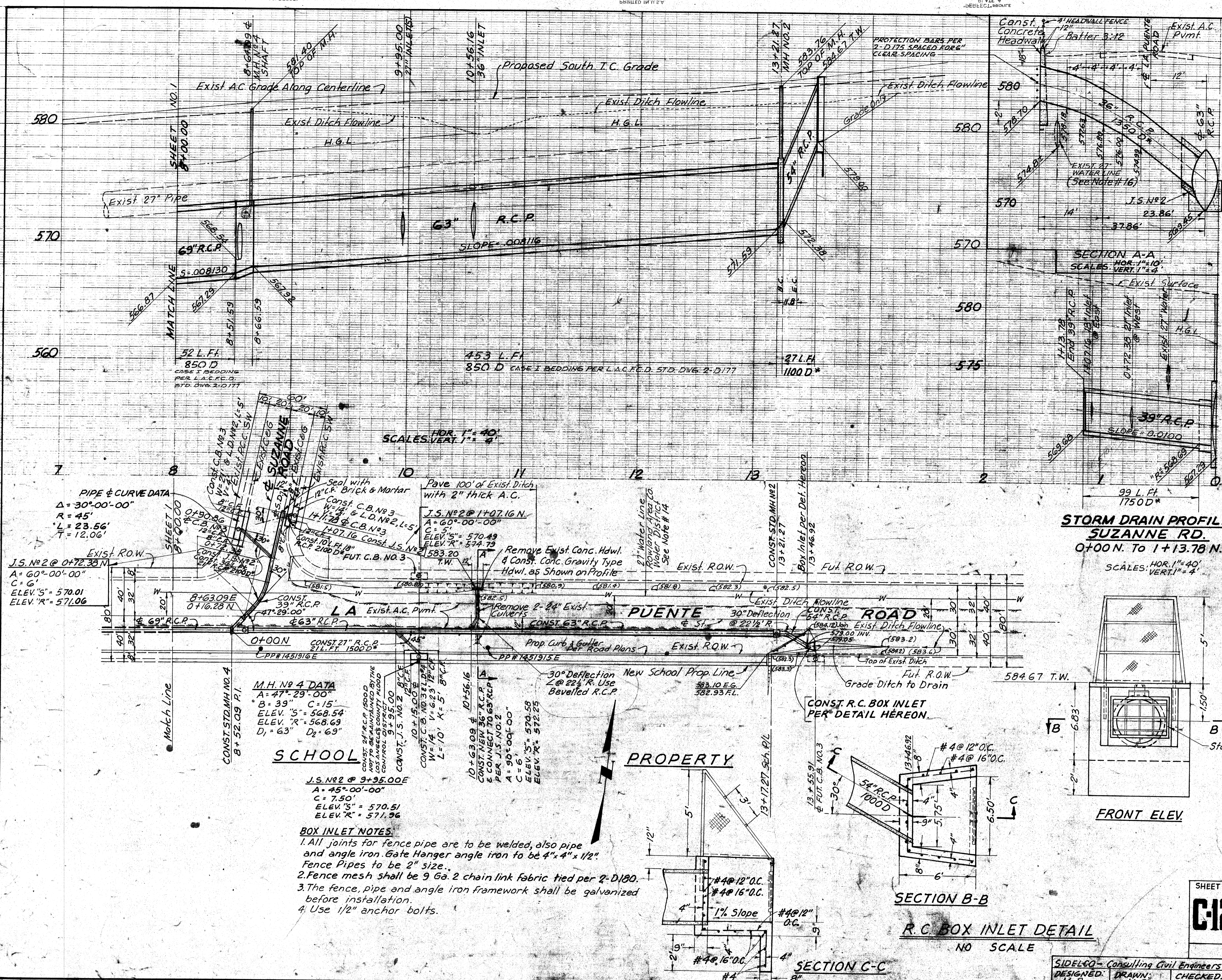
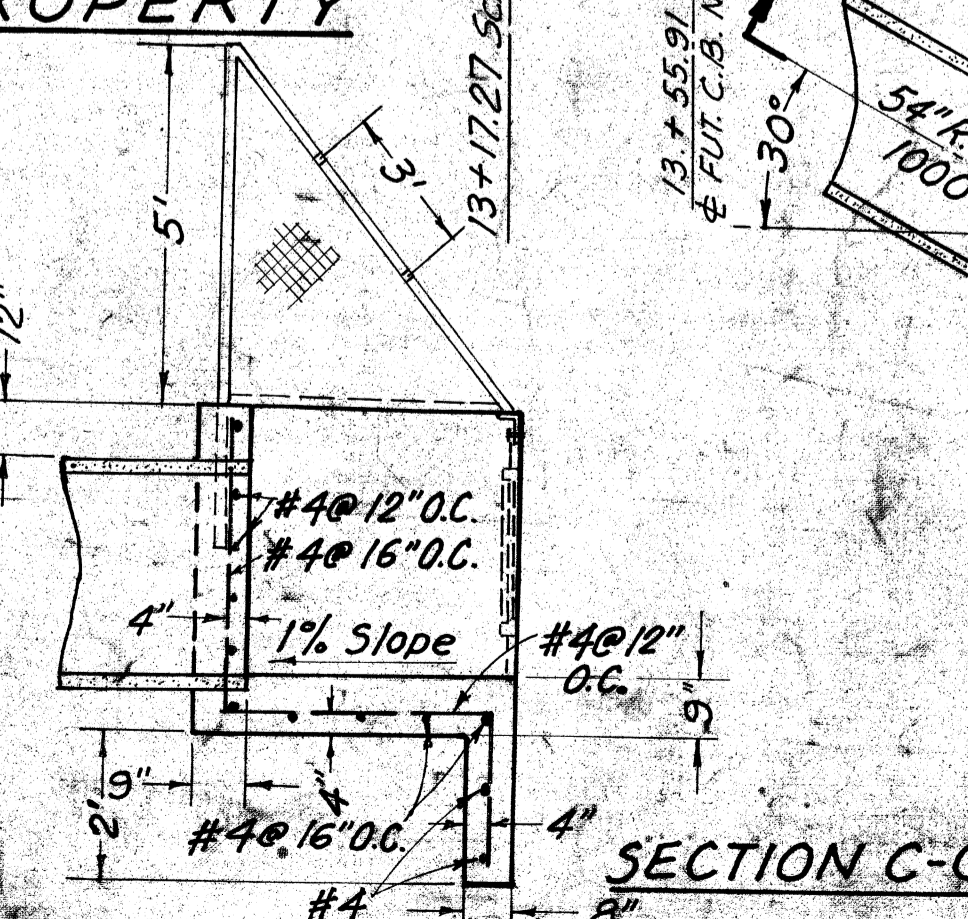
* CASE AD BEDDING PER COUNTY ENGINEER STD. DVG. D-54

**STORM DRAIN PROFILE
SUZANNE RD.
0+00N. TO 1+13.78N.**

SCALES: HOR. 1"=40'
VERT. 1"=4'



**R.C. BOX INLET DETAIL
NO SCALE**



BENCH MARK 56 1776
ROAD DEPT. BM TAG IN CONCRETE
HEADWALL 24 FEET NORTHERLY OF
C/L LA PUENTE ROAD AND 198 FEET
EASTERLY OF C/L SUZANNE ROAD
ELEV. 584.272 COVINA (1960)

(MISCELLANEOUS TRANSFER DRAIN NO. 221)
CITY OF WALNUT CALIFORNIA
APPROVED BY Ellsworth J. Jepperson 4-11-68
ELLSWORTH J. JEPPELSON CITY ENGINEER

SHEET NO.
C-12

SIDELCO-Consulting Civil Engineers
DESIGNED: M.P. DRAWN: M.P. CHECKED: G.S.L.

W.S.D. 026