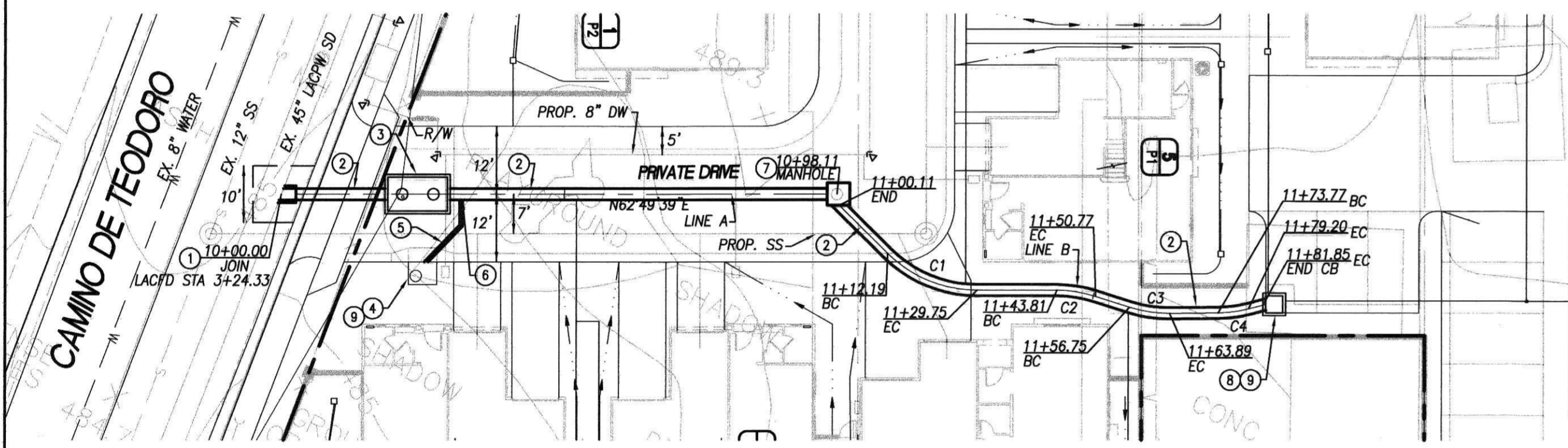


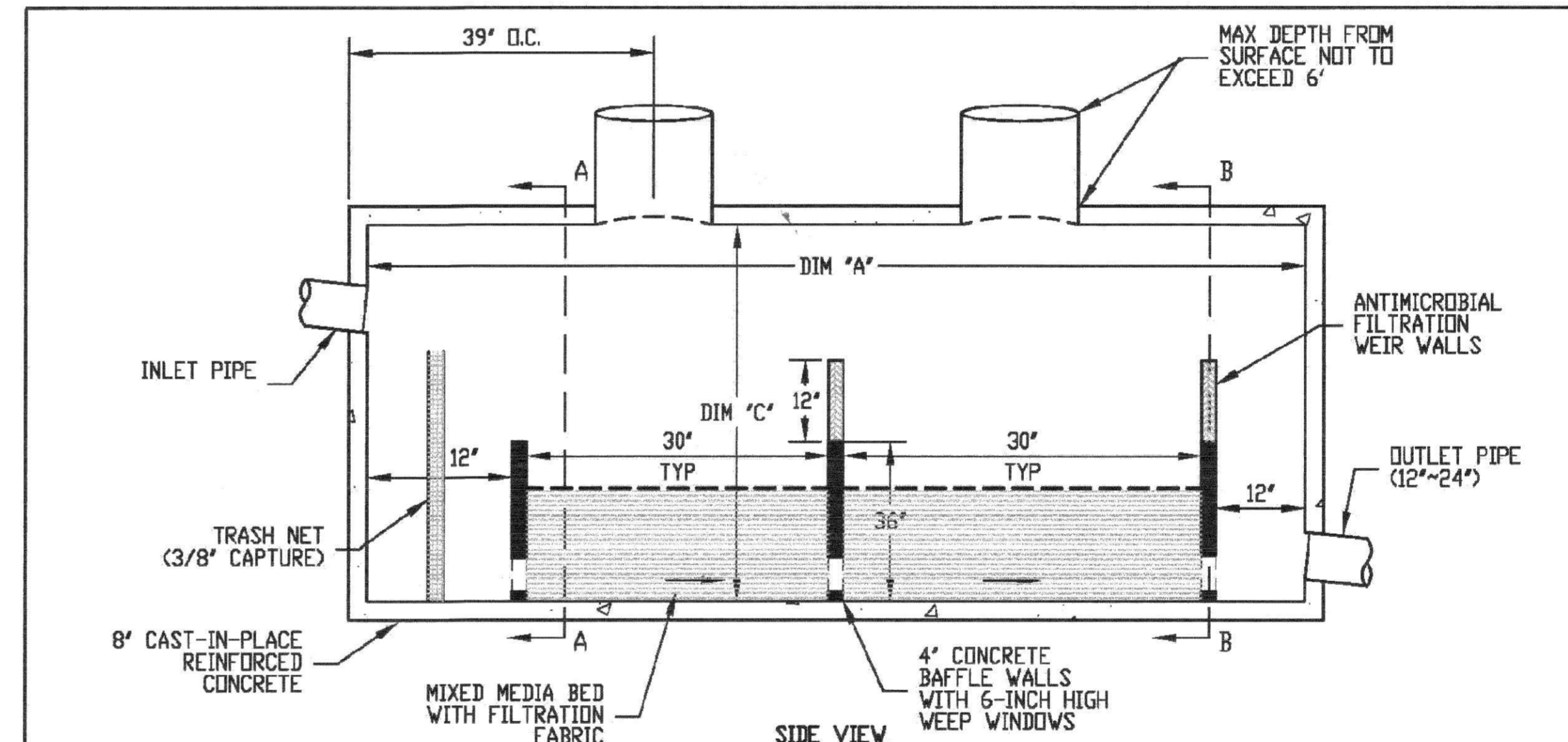
PROFILE
1"=20' HORIZONTAL
1"=2' VERTICAL



CONSTRUCTION NOTES:

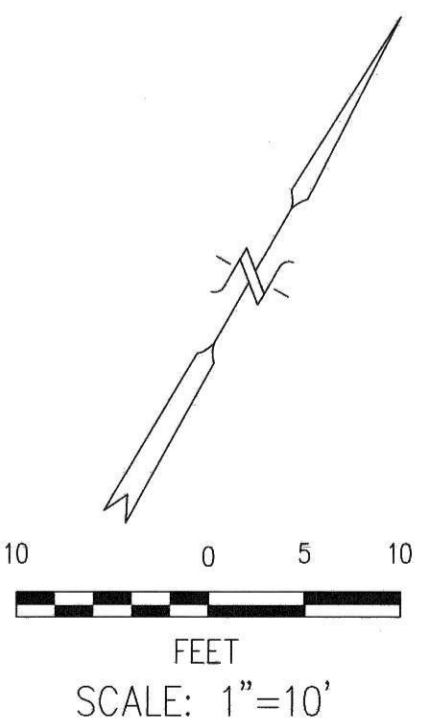
- 1— JOIN TO EXISTING STORM DRAIN PER SPPWC STD 331-2.
- 2— INSTALL 18" RCP TO THE GRADES SHOWN, SEE TRENCH DETAIL SHEET 3.
- 3— INSTALL KATCHALL KLEERSTREAM FILTER PER MANUFACTURERS RECOMMENDATIONS.
- 4— CONSTRUCT SPPWC STD 330-2 CATCH BASIN TO THE GRADES SHOWN.
- 5— CONSTRUCT 6" SDR-35 WATER QUALITY DRAIN LINE 2% MIN SLOPE.
- 6— JOIN TO PROPOSED RCP PER GREEN BOOK STANDARDS.
- 7— INSTALL SPPWC 321-1 MANHOLE TO THE GRADES SHOWN.
- 8— INSTALL 3'X3' AREA DRAIN BOX WITH TRAFFIC RATED GRATE AND FRAME.
- 9— INSTALL SPPWC STD 313-2 CASE B LOCAL DEPRESSION.

CURVE TABLE				
CURVE	LENGTH	RADIUS	DELTA	TAN
C1	17.56	22.50	44°43'03"	9.25
C2	6.96	22.50	17°43'50"	3.51
C3	7.14	22.50	18°11'20"	3.60
C4	5.43	22.50	14°45'24"	2.84



- NOTES:**
1. MANHOLES AND VAULT ARE TRAFFIC RATED (CALTRANS D-80/D-82 SPECIFICATIONS).
 2. FILTER FABRICS / MEDIA:
 - TRASH NET ELIMINATES DEBRIS >3/8-INCH
 - ANTIMICROBIAL FILTER ELIMINATE 99.99% OF ALL BACTERIA, VIRUSES, YEAST, MOLD, MILDEW, ALGAE AND THEIR ASSOCIATED ODORS.
 3. MIXED MEDIA BED ELIMINATES >65% OF HEAVY METALS, PHOSPHATES, PHOSPHORUS, NITRATES, ETC. 97% REMOVAL OF HYDROCARBONS.

KATCHALL FILTRATION SYSTEMS, LLC 1-866-KATCHALL WWW.KATCHALL.NET	KLEERSTREAM™ FILTRATION VAULT		
	REVISION:	DWG NUM:	SHEET:



DIGALERT
DIAL BEFORE YOU DIG
TWO WORKING DAYS BEFORE YOU DIG
TOLL FREE 1-800-227-2600
A PUBLIC SERVICE BY UNDERGROUND SERVICE ALERT

DATE	BY	MARK	APPR	DATE

REGISTERED PROFESSIONAL ENGINEER
VINCENT W. SCARPATI
No. 33530
Exp. 6/30/2016
CIVIL
STATE OF CALIFORNIA

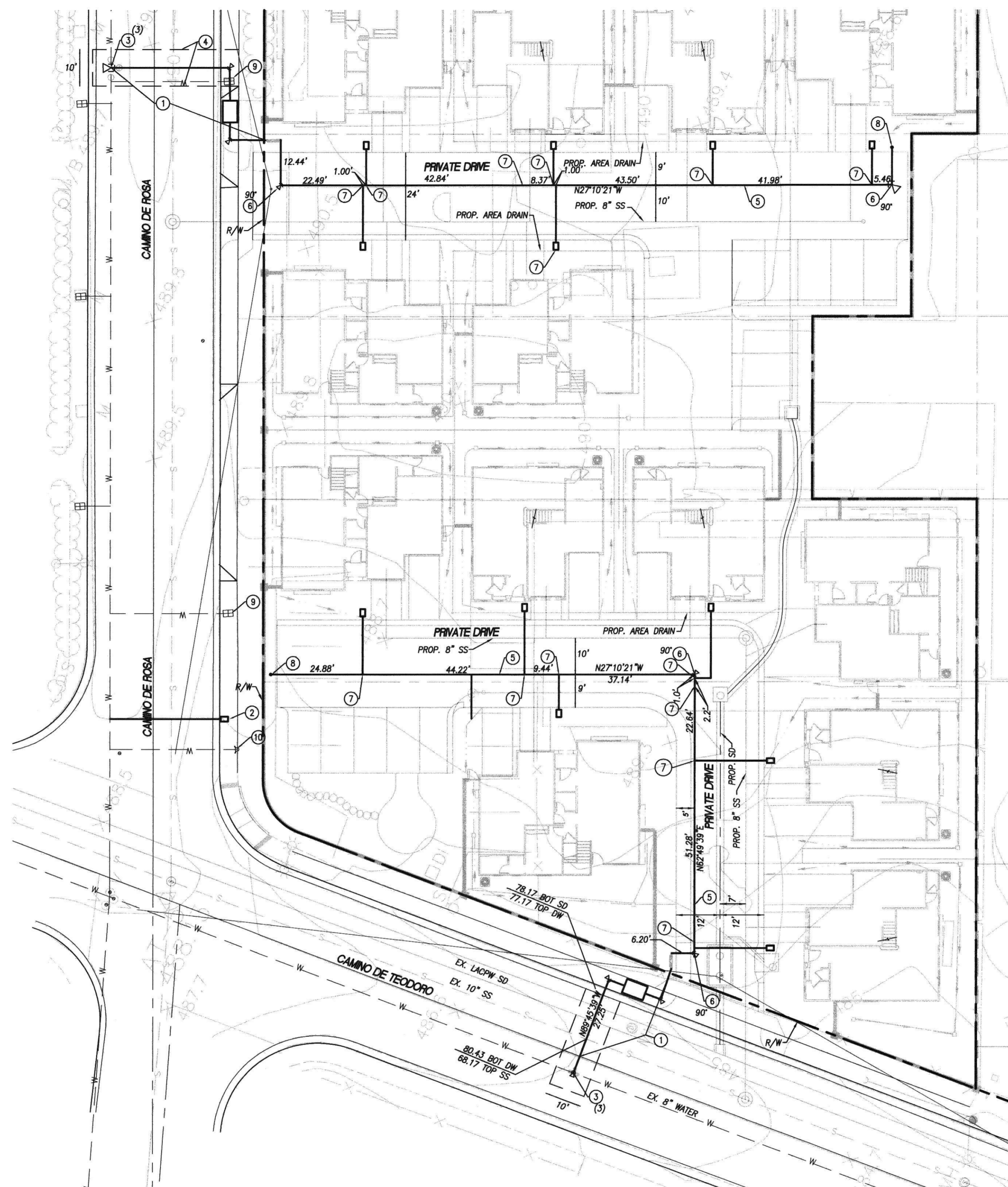
PREPARED UNDER THE DIRECTION OF:
VINCENT SCARPATI
DATE: 4-15-15
EXP. DATE: 06-30-16 R.C.E.# 33520
APPROVED BY:
CITY ENGINEER
DATE: 4/16/15

THE OLSON COMPANY
3020 OLD RANCH PARKWAY, SUITE 400
SEAL BEACH, CA 90740-2751
PH: (562) 596-4770 FAX: (562) 596-6968

C&V CONSULTING, INC.
CIVIL ENGINEERING
LAND PLANNING AND SURVEYING
2756 BURBANK
FOOTHILL RANCH, CALIFORNIA 92610
PHONE (949) 916-3800
FAX (949) 916-3805

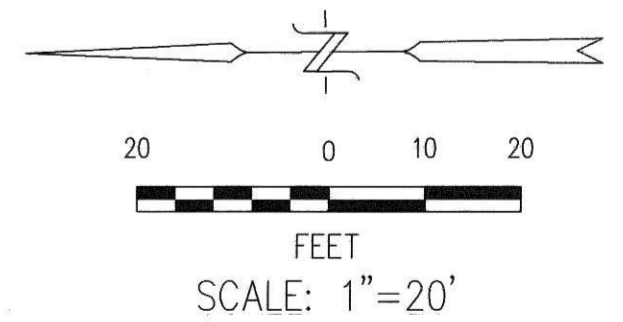
CITY OF WALNUT, CALIFORNIA
TRACT MAP 72827
DESIGN BY: DSK
DRAWN BY: DSK
CHECKED BY: VS
STORM DRAIN IMPROVEMENT PLAN
SCALE: AS SHOWN
DATE: 4/16/15
W.O. OLSO-072 11/1

#192 A



WATER CONSTRUCTION NOTES:

- ① — 8" MAIN AND 4" MASTER METER AND DDA TO BE INSTALLED BY WALNUT VALLEY WATER DISTRICT. CONNECT AND JOIN.
- ② — INSTALL 2" IRRIGATION SERVICE WITH 2" METER. TO BE INSTALLED BY WALNUT VALLEY WATER DISTRICT.
- ③ — PROPOSED RW 8" GATE VALVE (FLGMJ), TO BE INSTALLED BY WALNUT VALLEY WATER DISTRICT.
- ④ — REMOVE AND REPLACE PAVEMENT BY WALNUT VALLEY WATER DISTRICT.
- ⑤ — INSTALL 8" PVC C-900 (42" MIN COVER) PER 2010 CPC AND CITY OF HB SPECS.
- ⑥ — INSTALL DI BEND AND THRUST BLOCK PER DETAIL SHEET 3.
- ⑦ — INSTALL 1" HOUSE CONNECTION WITH WATER METER BOX.
- ⑧ — INSTALL 8" BLOW OFF TO WALNUT VALLEY WATER DISTRICT STDS.
- ⑨ — ABANDON EXISTING WATER METER BY WALNUT VALLEY WATER DISTRICT.
- ⑩ — EXISTING FIRE HYDRANT, SAVE AND PROTECT.



DATE	BY	MARK	REVISIONS	APPR	DATE	COUNTY



PREPARED UNDER THE DIRECTION OF:
 VINCENT SCARPATI DATE: 4-15-15
 EXP. DATE: 06-30-16 R.C.E.# 33520
 APPROVED BY:
 [Signature] DATE: 4/20/15
 CITY ENGINEER



THE OLSON COMPANY
 3020 OLD RANCH PARKWAY, SUITE 400
 SEAL BEACH, CA 90740-2751
 PH: (562) 596-4770 FAX: (562) 596-6968

C&V CONSULTING, INC.
 CIVIL ENGINEERING
 LAND PLANNING AND SURVEYING
 2756 BURBANK
 FOOTHILL RANCH, CALIFORNIA 92600
 PHONE (949) 916-3800
 FAX (949) 916-3805

CITY OF WALNUT, CALIFORNIA			
TRACT MAP 72827			
DESIGN BY: DSK	WATER IMPROVEMENT PLAN	SCALE: AS SHOWN	1/11
DRAWN BY: DSK		DATE:	
CHECKED BY: VS		W.O. OLS0-072	

#192B