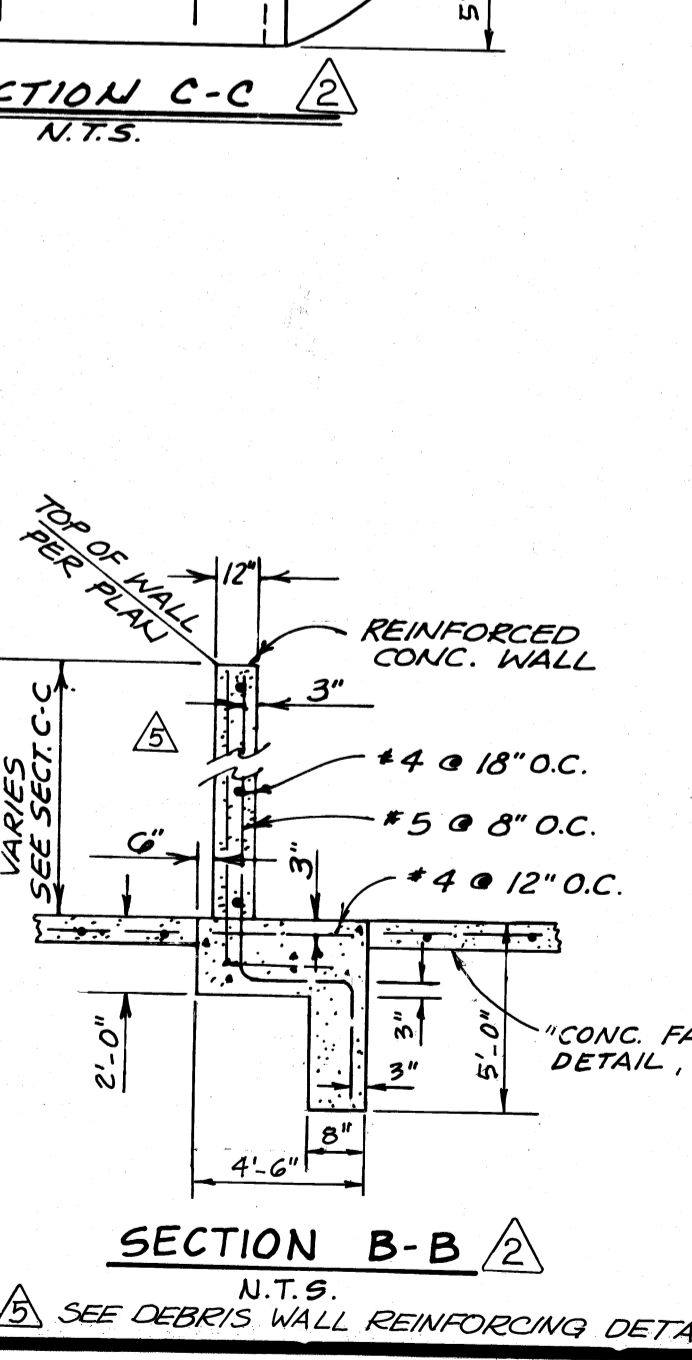
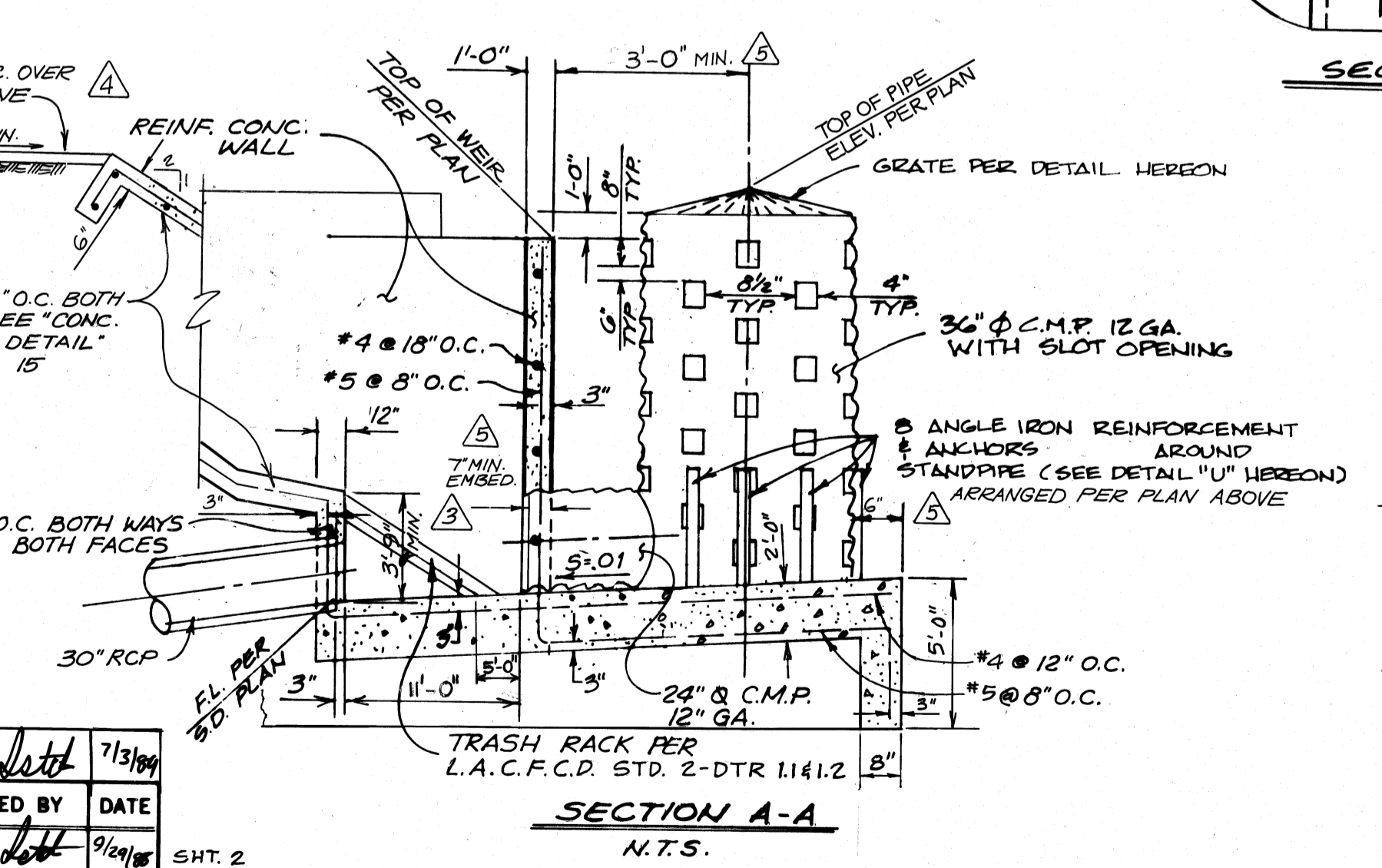
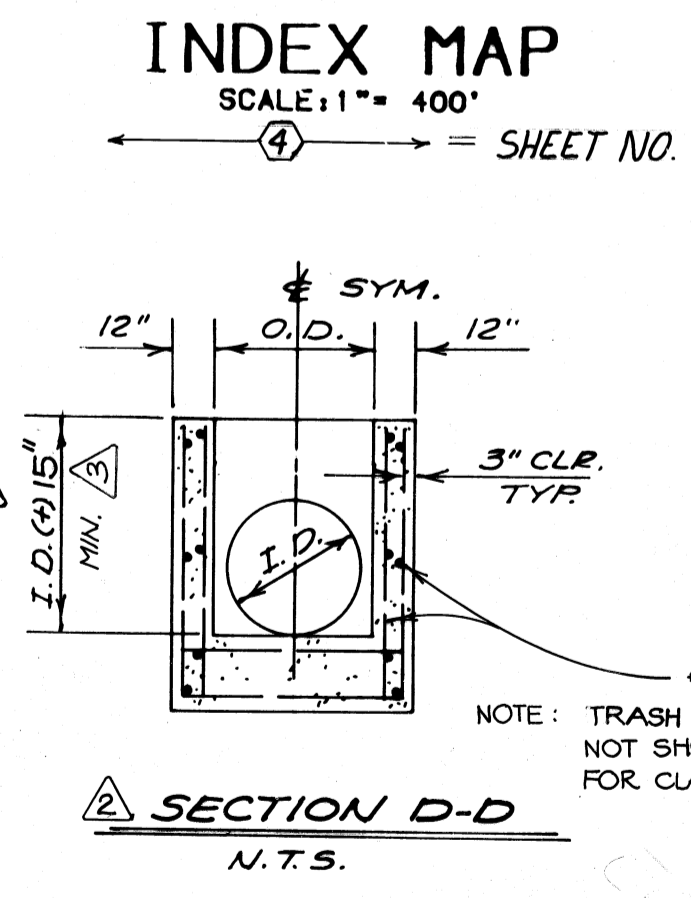
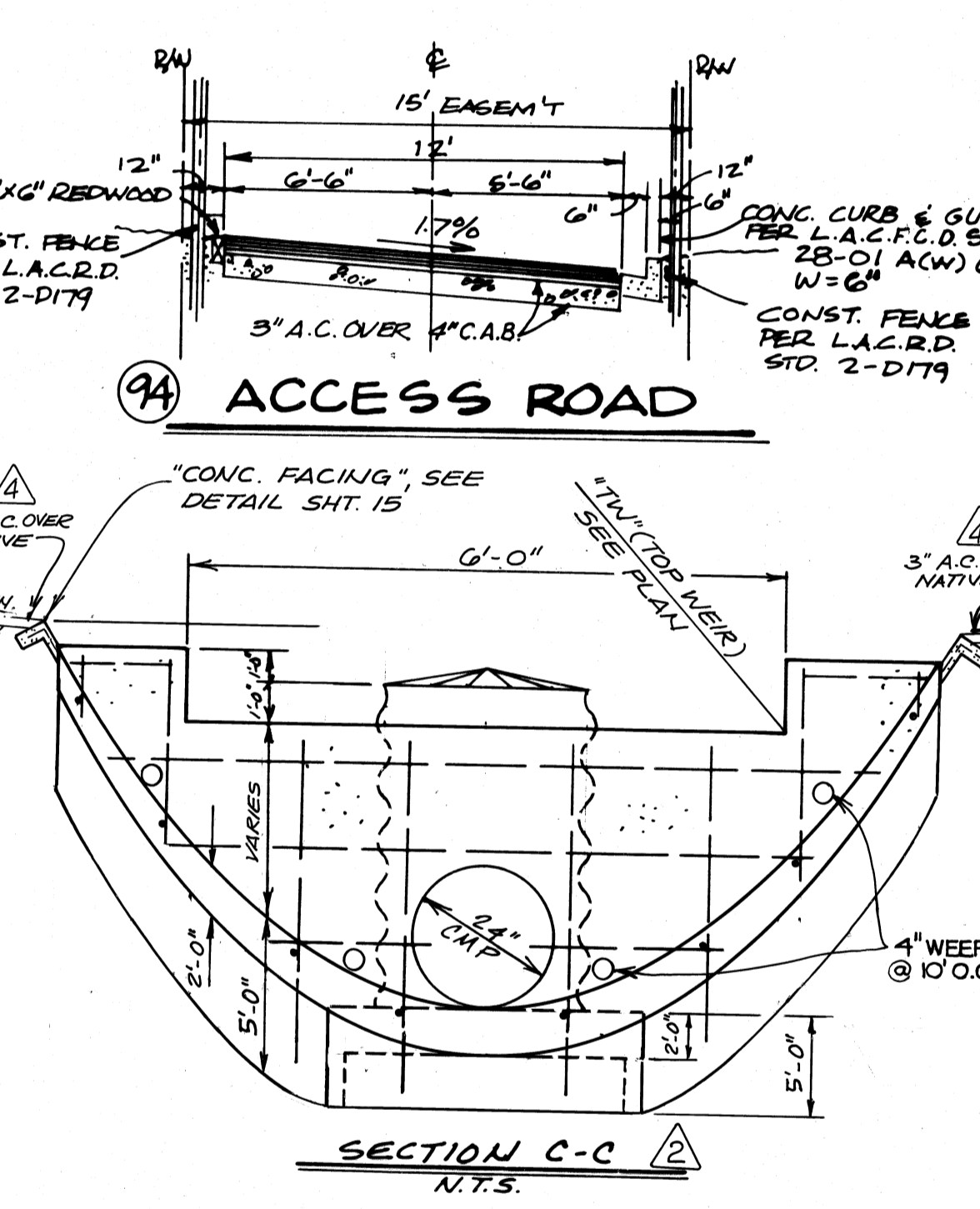
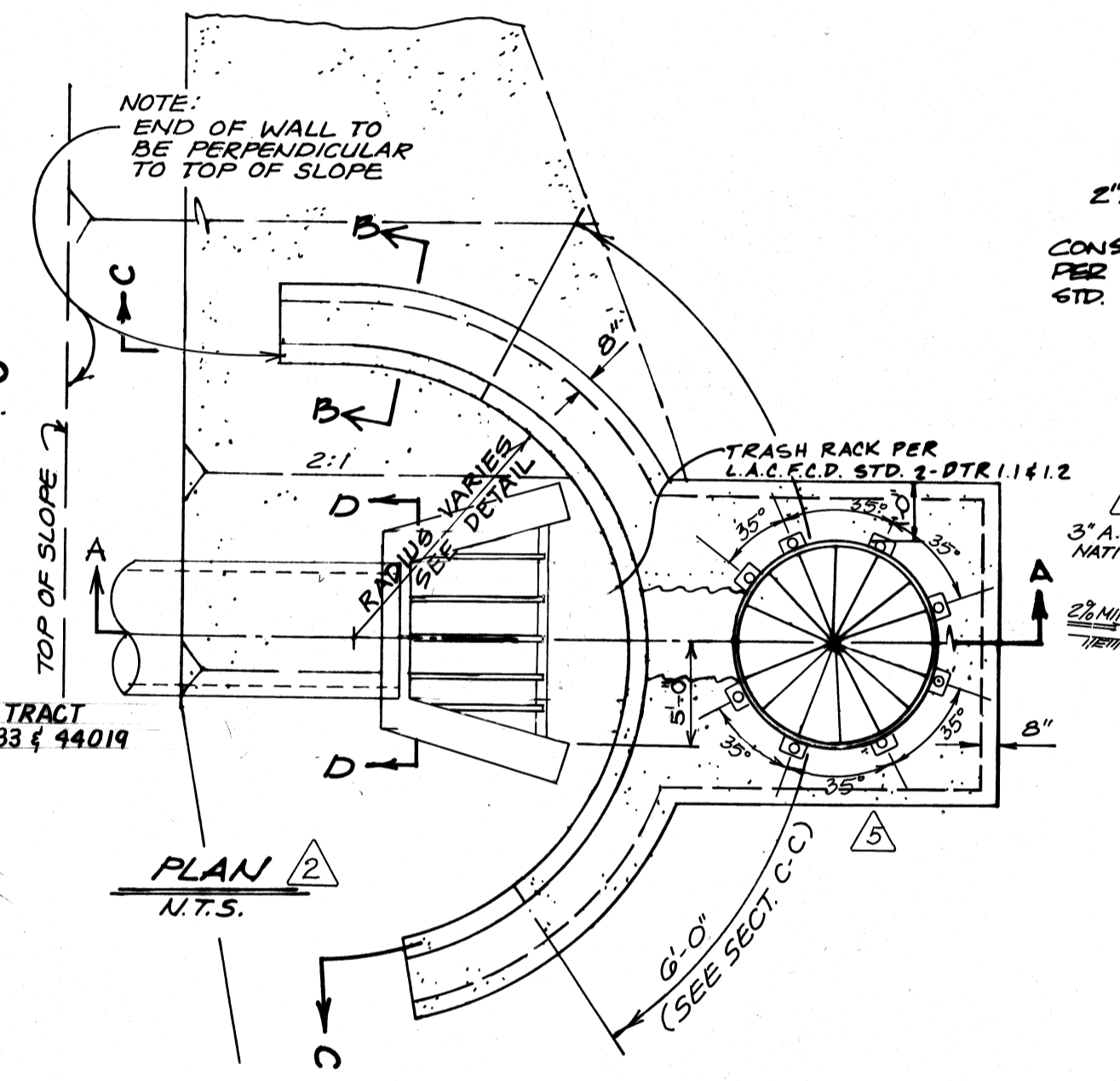
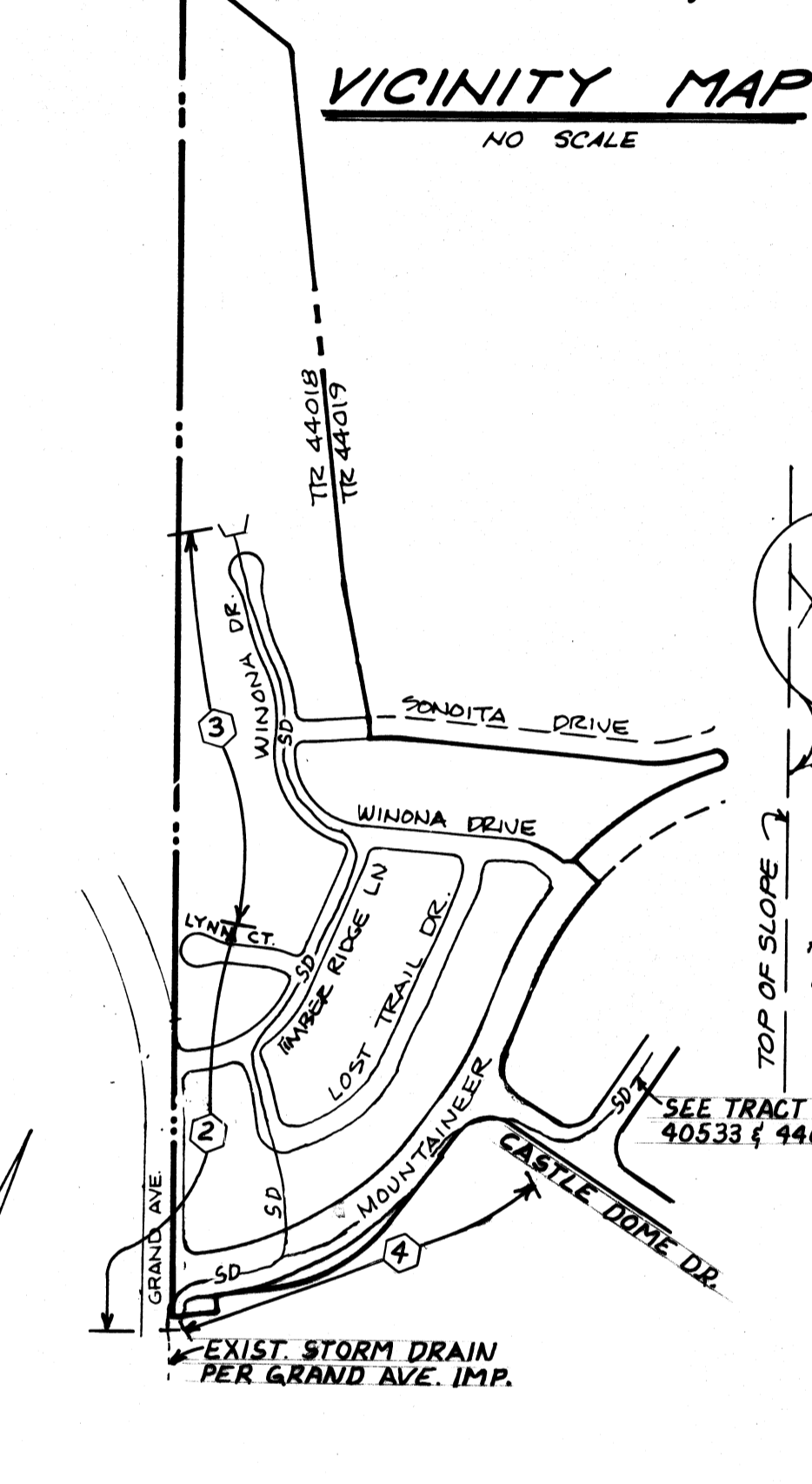
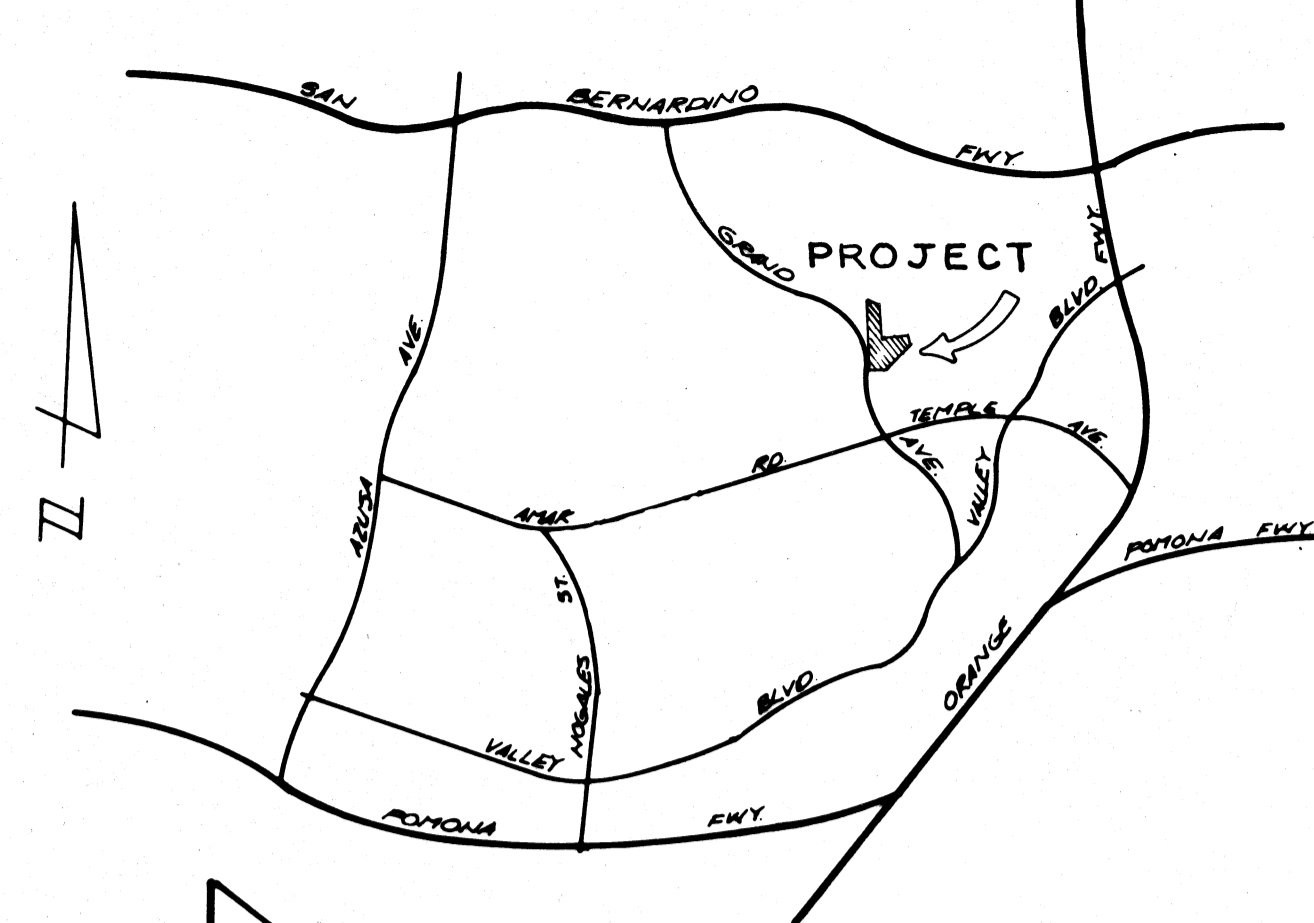
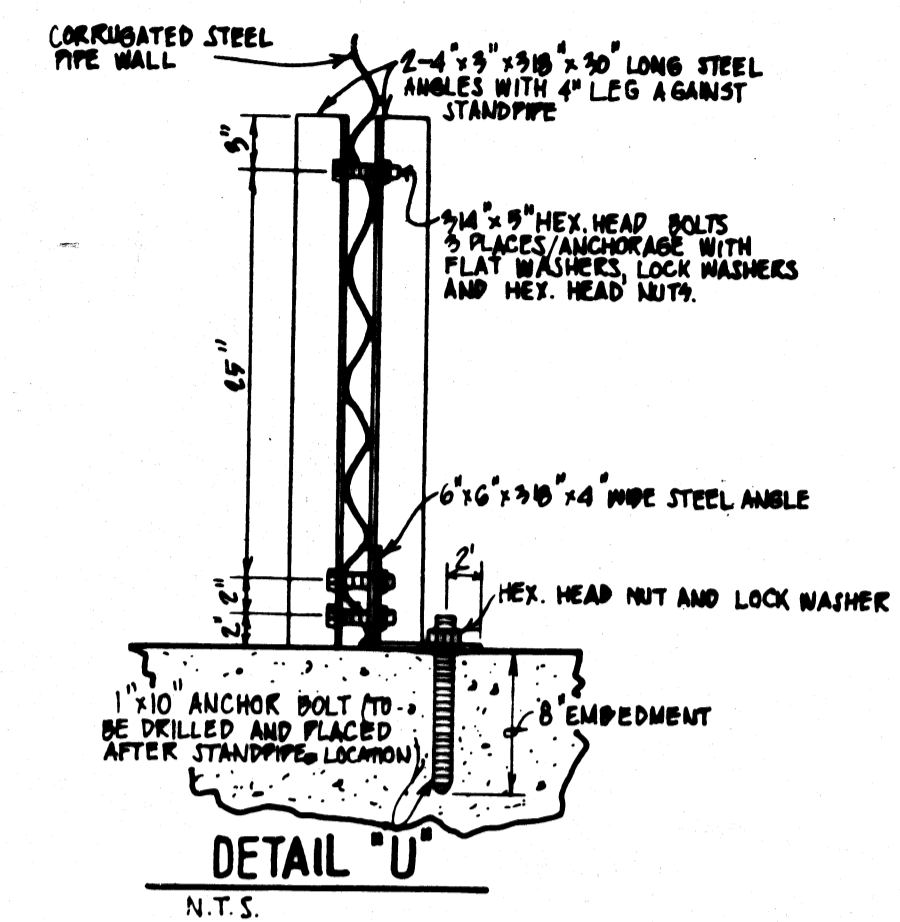
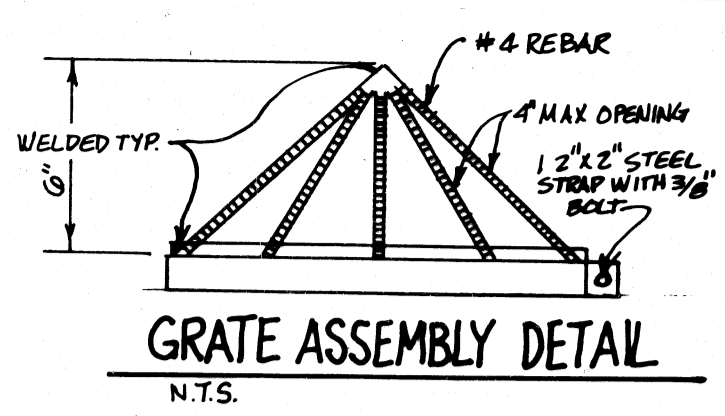


STORM DRAIN PLANS IN TRACT No. 44018 MTD 1220

BENCH MARK:
 ROUND B. M. TAG IN N'LY END OF CATCH BASIN ON N.E. CORNER OF GRAND AVE. AND MOUNTAINEER RD. 30 FT. NORTH & 90 FT. EAST OF APPROX. ST. C.L. INT.
 COVINA QUAD. 1980

INDEX TO STANDARD DRAWINGS

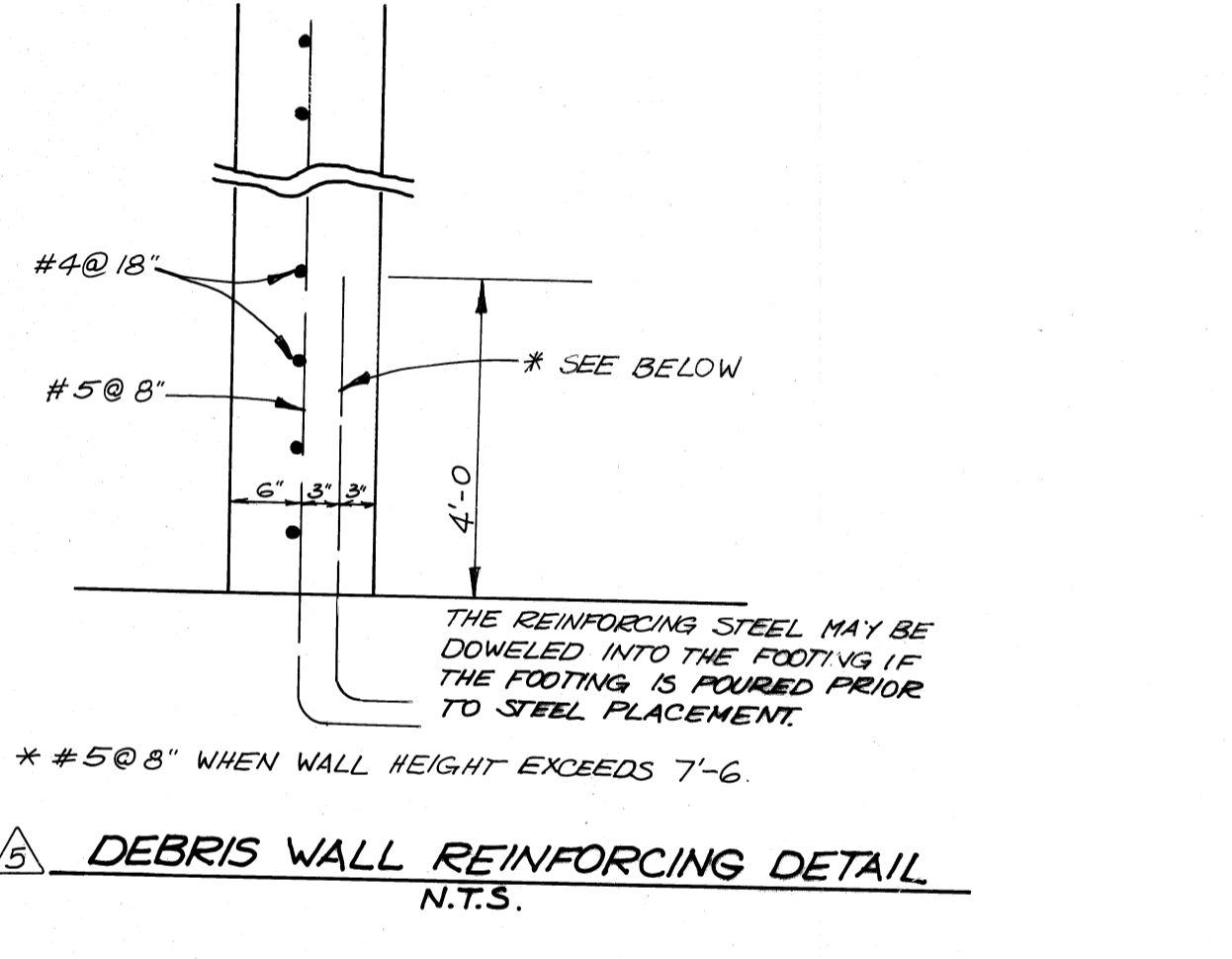
L.A.C.F.C.D. STD.	DESCRIPTION
2-9 96	STANDARD DROP STEP
2-D 102	MANHOLE NO. 1
2-D 107	CONCRETE RINGS, REDUCER AND PIPE FOR MANHOLE SHAFT
2-D 112	JUNCTION STRUCTURE NO. 2
2-D 113	MANHOLE NO. 4
2-D 156	MANHOLE FRAME AND COVER FOR CATCH BASINS
2-D 157	CATCH BASIN REINFORCEMENT FOR ROUND MANHOLES
2-D 160	CATCH BASIN NO. 1
2-D 162	CATCH BASIN NO. 2
2-D 163	CATCH BASIN NO. 3
2-D 172	CATCH BASIN REINFORCEMENT
2-D 173	PIPE SUPPORT ACROSS TRENCHES
2-D 175	REMOVABLE PROTECTION FOR CATCH BASINS
2-D 184	MANHOLE NO. 2
2-D 193	JUNCTION STRUCTURE NO. 4
2-D 224	CONNECTION TO CATCH BASIN FOR PIPES 12 INCHES THRU 72 INCHES
2-D 232	DETAIL OF CATCH BASIN OPENING
2-D 238	WIRE ROPE BARRICADE
2-D 264	ADJUSTABLE PROTECTION BAR STIRRUP
2-D 393	CONCRETE COLLAR FOR PIPE 12 INCHES THROUGH 66 INCHES
2-D 461	MODIFICATION TO CATCH BASINS
2-D 472	STANDARD 24-INCH MANHOLE FRAME AND COVER
2-D 179	FENCE AND GATE DETAILS FOR DEBRIS BASIN R/W'S
2-D 177	PIPE BEDDING
L.A.C. ENGINEER STD.	
S-2	PUBLIC SAFETY
L.A.C.R.D. STD.	DESCRIPTION
33-01	STEPS
CITY OF WALNUT STD.	DESCRIPTION
W S-506	DRIVEWAYS



GENERAL NOTES

- A PERMIT SHALL BE OBTAINED FROM THE LOS ANGELES COUNTY DEPARTMENT OF PUBLIC WORKS PRIOR TO COMMENCING ANY CONSTRUCTION WORK UNDER THIS CONTRACT. CONTACT THE DEPARTMENT BY TELEPHONE AT (818) 458-3129 TO OBTAIN AN INSPECTION AND CONNECTION PERMIT AND TO MAKE DEPOSIT FOR CONSTRUCTION INSPECTION.
- THE CONTRACTOR SHALL NOTIFY THE CONSTRUCTION DIVISION BY TELEPHONE, (714) 594-9702 AT LEAST 48 HOURS BEFORE STARTING ANY WORK UNDER THIS CONTRACT.
- THIS STORM DRAIN WILL NOT BE ACCEPTED FOR MAINTENANCE UNTIL THE STREETS HAVE BEEN PAVED, MANHOLES BROUGHT TO GRADE AND THE SYSTEM CLEANED TO THE SATISFACTION OF THE DIRECTOR OF PUBLIC WORKS.
- APPROVAL OF THIS PLAN BY THE COUNTY OF LOS ANGELES DOES NOT CONSTITUTE A REPRESENTATION TO THE ACCURACY OF THE LOCATION, OR THE EXISTENCE OR NON-EXISTENCE OF ANY UNDERGROUND UTILITY, PIPE OR STRUCTURE WITHIN THE LIMITS OF THIS PROJECT. THIS NOTE APPLIES TO ALL SHEETS.
- ALL WORK SHALL BE IN ACCORDANCE WITH THE "STANDARD SPECIFICATIONS FOR PUBLIC WORKS CONSTRUCTION 1985 EDITION", INCLUDING SUPPLEMENTS AND SHALL BE PROSECUTED ONLY IN THE PRESENCE OF THE DIRECTOR OF PUBLIC WORKS.
- THE CONTRACTOR'S ATTENTION IS DIRECTED TO SECTION 7-10.41 OF THE STANDARD SPECIFICATIONS FOR PUBLIC WORKS CONSTRUCTION IN REGARD TO SAFETY ORDERS.
- THE CONTRACTOR SHALL CONFORM TO THE "MINIMUM PUBLIC SAFETY REQUIREMENTS" AS SHOWN ON LOS ANGELES COUNTY ENGINEER STANDARD S-2.
- TRANSVERSE REINFORCEMENT AND TRANSVERSE JOINTS SHALL BE PLACED AT RIGHT ANGLES (OR RADIAL) TO THE CONDUIT CENTERLINE EXCEPT AS OTHERWISE SHOWN ON THE DRAWINGS.
- ALL STEEL ADJACENT TO FACE OF CONCRETE SHALL HAVE 2 1/2" CLEARANCE UNLESS OTHERWISE SPECIFIED.
- REINFORCEMENT SHALL BE DEFORMED BARS OF INTERMEDIATE GRADE STEEL, PER A.S.T.M. A-615-GRADE 60.
- ALL BAR BENDS AND HOOKS SHALL CONFORM TO THE AMERICAN CONCRETE INSTITUTE "MANUAL OF STANDARD PRACTICE".
- DIMENSIONS FROM FACE OF CONCRETE TO STEEL ARE TO CENTERLINE OF STEEL UNLESS OTHERWISE NOTED.
- ALL STEEL THAT IS TO BE CONTINUOUS SHALL HAVE A MINIMUM LAP OF 30 BAR DIAMETERS OR 18" WHICHEVER IS GREATER.
- NO CONCRETE SHALL BE PLACED UNTIL THE FORMS AND REINFORCING STEEL HAVE BEEN PLACED, INSPECTED AND APPROVED.
- ALL CONCRETE SHALL BE PORTLAND CEMENT CONCRETE WITH AN ULTIMATE 28 DAYS COMPRESSIVE STRENGTH OF 3250 P.S.I., UNLESS OTHERWISE NOTED.
- ALL CONSTRUCTION JOINTS IN THE FOOTING OF SLABS AND WALLS SHALL BE IN THE SAME PLANE. NO STAGGERING OF JOINTS WILL BE PERMITTED.
- ALL EXPOSED EDGES SHALL BE FINISHED WITH A 3/4" CHAMFER.
- UNLESS OTHERWISE SHOWN, CONCRETE DIMENSIONS SHALL BE MEASURED VERTICALLY OR HORIZONTALLY AND PARALLEL OR AT RIGHT ANGLES (OR RADIAL) TO THE CENTER LINE OF CONSTRUCTION.
- THE INSPECTOR MAY HAVE THE OPTION TO REQUIRE CONCRETE BACKFILL DURING CONSTRUCTION WHEN THE PIPE HAS LESS THAN ONE FOOT OF COVER AND IS SUBJECT TO HEAVY EQUIPMENT TRAFFIC. THE CONCRETE BACKFILL SHALL CONSIST OF 1:3:5 MIX, PORTLAND CEMENT CONCRETE POURED FROM WALL TO WALL OF TRENCH AND FROM BOTTOM OF TRENCH TO A MINIMUM OF 4 INCHES OVER THE TOP OF THE PIPE.
- ALL BACKFILLS AND FILLS TO BE USED AS SUBGRADE SHALL BE COMPACTED TO A RELATIVE DENSITY OF 90% UNLESS OTHERWISE SPECIFIED.
- A SOILS ENGINEER SHALL CERTIFY THAT ALL FILLS AND BACKFILLS OVER UNDERGROUND STORM DRAINS OUTSIDE OF STREET RIGHTS-OF-WAY HAVE BEEN COMPACTED OR CONSOLIDATED TO A 90% DENSITY. THIS CERTIFICATION SHALL BE SUBMITTED TO THE DIRECTOR OF THE PUBLIC WORKS PRIOR TO THE ACCEPTANCE OF THE WORK BY THE COUNTY.
- WHERE PIPE IS TO BE PLACED IN FILL, THE FILL SHALL BE COMPACTED TO A MINIMUM DEPTH OF 3 FEET ABOVE THE TOP OF THE PIPE PRIOR TO TRENCHING.
- ALL BACKFILL AND FILL AROUND CLOSED CONDUIT IN STREET RIGHTS-OF-WAY SHALL BE BROUGHT UP TO SUBGRADE OF THE ROAD OR TO 2 FEET ABOVE THE TOP OF THE CONDUIT, WHICHEVER IS LESS. THE DEPARTMENT SHALL INSPECT ALL BACKFILL AND FILL ABOVE AFOREMENTIONED LIMITS. APPLICATIONS FOR AN ENGINEER OR INSPECTOR IN CONNECTION WITH THE WORK SHALL BE MADE BY THE CONTRACTOR AT LEAST 24 HOURS BEFORE HIS SERVICE IS REQUIRED. CALL (213) 226-8188 AND (714) 594-9702.

- ALL REINFORCED CONCRETE PIPE SHALL BE BEDDED IN ACCORDANCE WITH LOS ANGELES COUNTY FLOOD CONTROL DIST. CASE III BEDDING PER STANDARD DRAWING 2-D177 (130 PCF) UNLESS OTHERWISE NOTED. THE BEDDING MATERIAL PLACED FROM THE BOTTOM OF THE PIPE TO 1 FOOT OVER THE TOP OF THE PIPE SHALL BE SAND, CRUSHED AGGREGATE, OR NATIVE FREE-DRAINING GRANULAR MATERIAL AND SHALL HAVE A SAND EQUIVALENT OF 20 OR GREATER.
- ALL PIPES SHALL BE PLACED IN TRENCH IN NATURAL GROUND AND/OR COMPACTED FILL. THE GROUND LEVEL BEFORE THE TRENCHING SHALL BE AT LEAST 3 FEET ABOVE THE TOP OF THE PIPE ELEVATION, OR AT FINISH SURFACE ELEVATION, WHICHEVER IS LESS. ALL BACKFILLS IN EASEMENTS SHALL BE COMPACTED TO THE DENSITY REQUIRED BY THE GRADING PLAN.
- PIPE SHALL BE EMBEDDED 5 INCHES INTO ALL STRUCTURES INCLUDING INLET AND HEADWALLS, UNLESS OTHERWISE SPECIFIED.
- THE PIPE IS TO BE MANUFACTURED WITH AN ADDITIONAL CONCRETE THICKNESS OVER THE INVERT REINFORCEMENT AS SPECIFIED IN PROFILE ON THESE PLANS.
- ELEVATIONS ARE IN FEET ABOVE U.S.C. & G.S. MEAN SEA LEVEL DATUM OF 1929.
- ALL LOCAL DEPRESSIONS WITHIN THE DEDICATED STREET RIGHTS-OF-WAY SHALL BE CONSTRUCTED PER THE STREET PLANS.
- THE CONTRACTOR SHALL PROVIDE FOR CONTRIBUTORY DRAINAGE AT ALL TIMES UNTIL THIS STORM DRAIN SYSTEM IS OPERABLE.
- ALL REFERENCES ON THIS PLAN TO THE COUNTY ENGINEER, ROAD DEPARTMENT, OR FLOOD CONTROL DISTRICT SHALL APPLY TO THE APPROPRIATE SECTIONS OF THE DEPARTMENT OF PUBLIC WORKS.
- REFER TO W.A.T.C.H. HANDBOOK FOR TRAFFIC CONTROL DURING CONSTRUCTION WORK WITHIN EXISTING STREETS. THAT WORK SHALL BE PERFORMED ONLY BETWEEN THE HOURS OF 9:00 AM AND 3:30 PM WITH (1) ONE TRAFFIC LANE OPEN IN EACH DIRECTION AT ALL TIMES.



PRIVATE ENGINEERS NOTICE TO CONTRACTORS

THE EXISTENCE AND LOCATION OF ANY UNDERGROUND UTILITY PIPES OR STRUCTURES SHOWN ON THESE PLANS ARE OBTAINED BY A SEARCH OF THE AVAILABLE RECORDS. TO THE BEST OF OUR KNOWLEDGE THERE ARE NO EXISTING UTILITIES EXCEPT AS SHOWN ON THIS MAP. THE CONTRACTOR IS REQUIRED TO TAKE DUE PRECAUTIONARY MEASURES TO PROTECT THE UTILITY LINES SHOWN AND ANY OTHER LINES NOT OF RECORD OR NOT SHOWN ON THIS DRAWING.

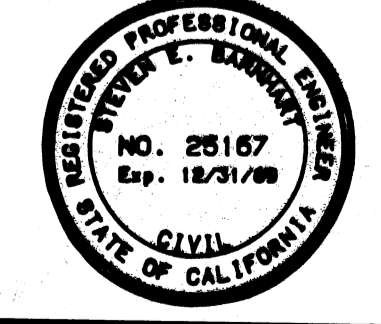
Stan Shambert
 REGISTERED CIVIL ENGINEER No. 25167 3-19-85 DATE

NOTICE: IF CONSTRUCTION OF IMPROVEMENTS ARE NOT INITIATED WITHIN 18 MONTHS OF APPROVAL DATE THESE PLANS ARE SUBJECT TO REVIEW BY CITY OF WALNUT.

CITY OF WALNUT - APPROVED CITY ENGINEER

Ronald L. Kranzer 11-9-87
 RONALD L. KRANZER, P.E. 18503 DATE

Contractor agrees that he shall assume sole and complete responsibility for job site conditions during the course of construction of this Project including safety of all persons and property; that this requirement shall apply continuously and not be limited to normal working hours; and that the Contractor shall defend, indemnify and hold the Owner and the Engineer harmless from any and all liability, real or alleged, in connection with the performance of work on the Project, excepting for liability arising from the sole negligence of the Owner or the Engineer.



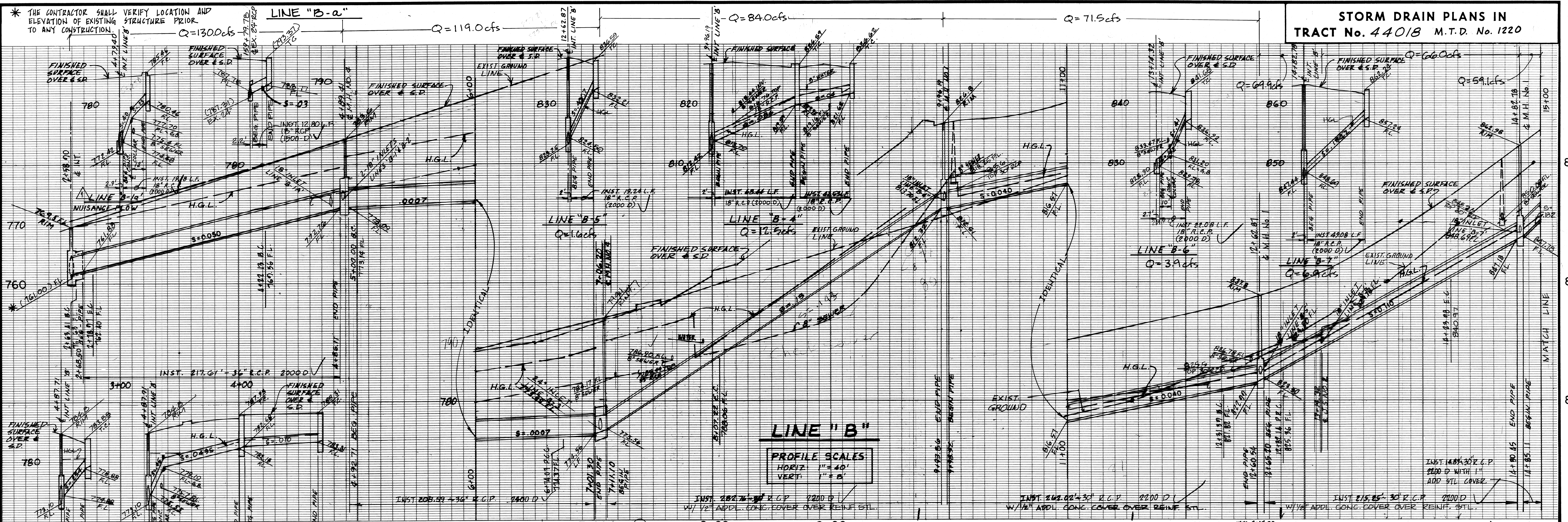
PLANS PREPARED BY:
Hunsaker & Associates
 Planning • Engineering • Surveying
 (714) 583-1010
 Three Hughes • Irvine, CA 92718

NO.	REVISION	REVISED BY	APPROVED BY	DATE
1	REVISED FACING SLAB LOC. IN DEBRIS BASIN. ELEV. PIPE PROFILE INLET LINE "B" SHT. 15, 2	<i>Stan Shambert</i>	<i>Jack Dettl</i>	7/3/84
2	CHANGE SLOPE OF LINES "B-1a" & "B-2"	<i>Stan Shambert</i>	<i>Jack Dettl</i>	9/29/84
3	CHANGE CURVE DATA, BEARING LINE "B-3"	<i>Stan Shambert</i>	<i>Jack Dettl</i>	9/29/84
4	CHANGE DIM. IN SECTION A-A TO 3'-0" MIN. & SEC. D-D I.D. 41.5" MIN.	<i>Stan Shambert</i>	<i>Jack Dettl</i>	9/29/84
5	CHANGED WALL & INLET DETAIL DIM. & FLANKED WING WALLS AND DEBRIS BASIN DETAIL	<i>Stan Shambert</i>	<i>Jack Dettl</i>	9/29/84
6	REVISED FACING CUT-OFF DETAIL	<i>Stan Shambert</i>	<i>Jack Dettl</i>	3/7/84
7	DEBRIS WALL DETAIL MODIFIED	<i>Stan Shambert</i>	<i>Jack Dettl</i>	4/15/84
8	ADDED FLOOD CONTROL EASEMENT, NOW SECTION "D" OVER GATE LOCATIONS	<i>Stan Shambert</i>	<i>Jack Dettl</i>	9/12/84
9	EXIS 42" R.C.P. TO REMAIN	<i>Stan Shambert</i>	<i>Jack Dettl</i>	9/21/84

M.T.D. 1220
 CITY OF WALNUT
STORM DRAIN IMPROVEMENTS
 LINE "B"
TITLE SHEET
 TR. 44018 STORM DRAIN IMPROVEMENTS SHT 1 of 4 SHTS

* THE CONTRACTOR SHALL VERIFY LOCATION AND ELEVATION OF EXISTING STRUCTURE PRIOR TO ANY CONSTRUCTION.

STORM DRAIN PLANS IN TRACT No. 44018 M.T.D. No. 1220



LINE "B"

PROFILE SCALES
HORIZ: 1" = 40'
VERT: 1" = 5'

STORM DRAIN CONST. NOTES

- (80) --- CONST. M. H. NO.1 PER L.A.C.F.C.D. STD. 2-D102
- (81) --- CONST. J. S. NO.2 PER L.A.C.F.C.D. STD. 2-D112
- (82) --- CONST. M. H. NO.4 PER L.A.C.F.C.D. STD. 2-D113
- (83) --- CONST. C. B. NO.1 PER L.A.C.F.C.D. STD. 2-D160
- (84) --- CONST. C. B. NO.2 PER L.A.C.F.C.D. STD. 2-D162
- (85) --- CONST. C. B. NO.3 PER L.A.C.F.C.D. STD. 2-D163
- (86) --- CONST. CONC. COLLAR PER L.A.C.F.C.D. STD. 2-D393
- (87) --- INST. 18" RCP (SEE PROFILE FOR D-LOAD)
- (88) --- INST. 30" RCP (SEE PROFILE FOR D-LOAD)
- (89) --- CONST. 8" THICK BRICK AND MORTAR PLUG
- (90) --- INST. 36" RCP (SEE PROFILE FOR D-LOAD)

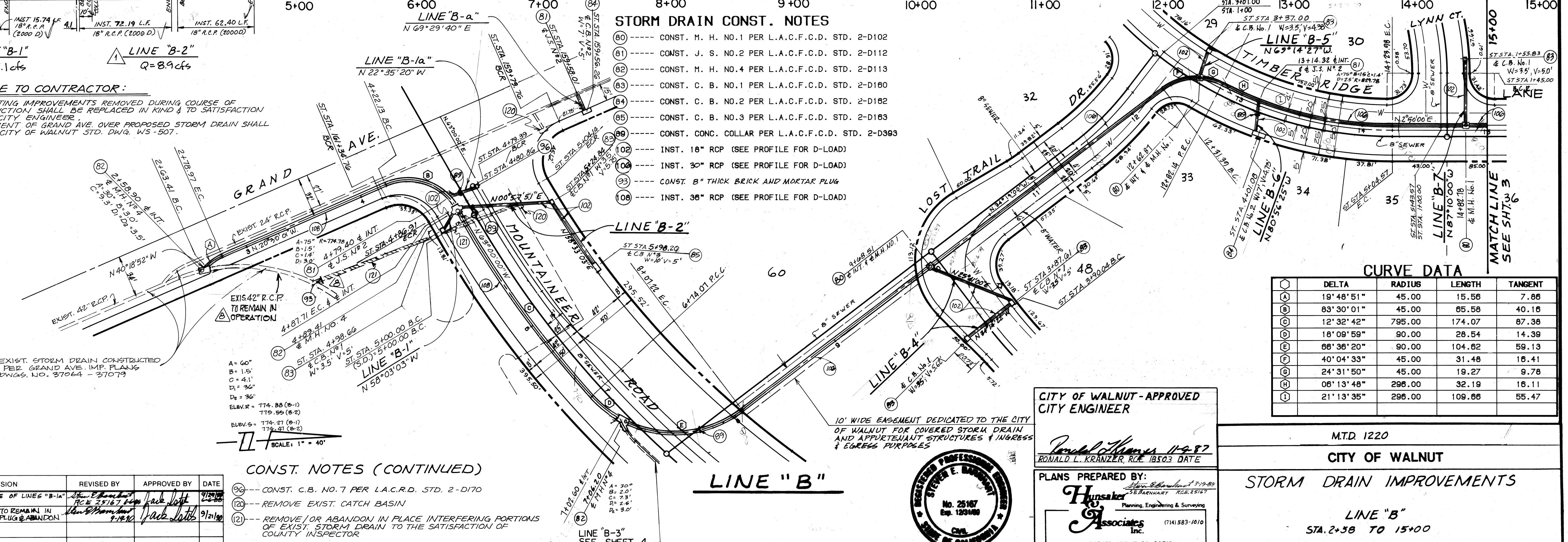
LINE "B-1"
Q=2.1 cfs

LINE "B-2"
Q=8.9 cfs

LINE "B-1a"
N 22° 35' 20" W

NOTICE TO CONTRACTOR:

1. ALL EXISTING IMPROVEMENTS REMOVED DURING COURSE OF CONSTRUCTION SHALL BE REPLACED IN KIND & TO SATISFACTION OF THE CITY ENGINEER.
2. REPAVEMENT OF GRAND AVE. OVER PROPOSED STORM DRAIN SHALL BE PER CITY OF WALNUT STD. DWG. WS-507.



CURVE DATA

DELTA	RADIUS	LENGTH	TANGENT
19° 48' 51"	45.00	15.56	7.86
83° 30' 01"	45.00	65.56	40.16
12° 32' 42"	795.00	174.07	87.38
18° 09' 59"	90.00	26.54	14.39
66° 36' 20"	90.00	104.62	59.13
40° 04' 33"	45.00	31.48	16.41
24° 31' 50"	45.00	19.27	9.78
08° 13' 48"	296.00	32.19	16.11
21° 13' 35"	296.00	109.66	55.47

CONST. NOTES (CONTINUED)

- (91) --- CONST. C.B. NO.7 PER L.A.C.F.C.D. STD. 2-D170
- (92) --- REMOVE EXIST. CATCH BASIN
- (93) --- REMOVE / OR ABANDON IN PLACE INTERFERING PORTIONS OF EXIST. STORM DRAIN TO THE SATISFACTION OF COUNTY INSPECTOR

CITY OF WALNUT-APPROVED
CITY ENGINEER

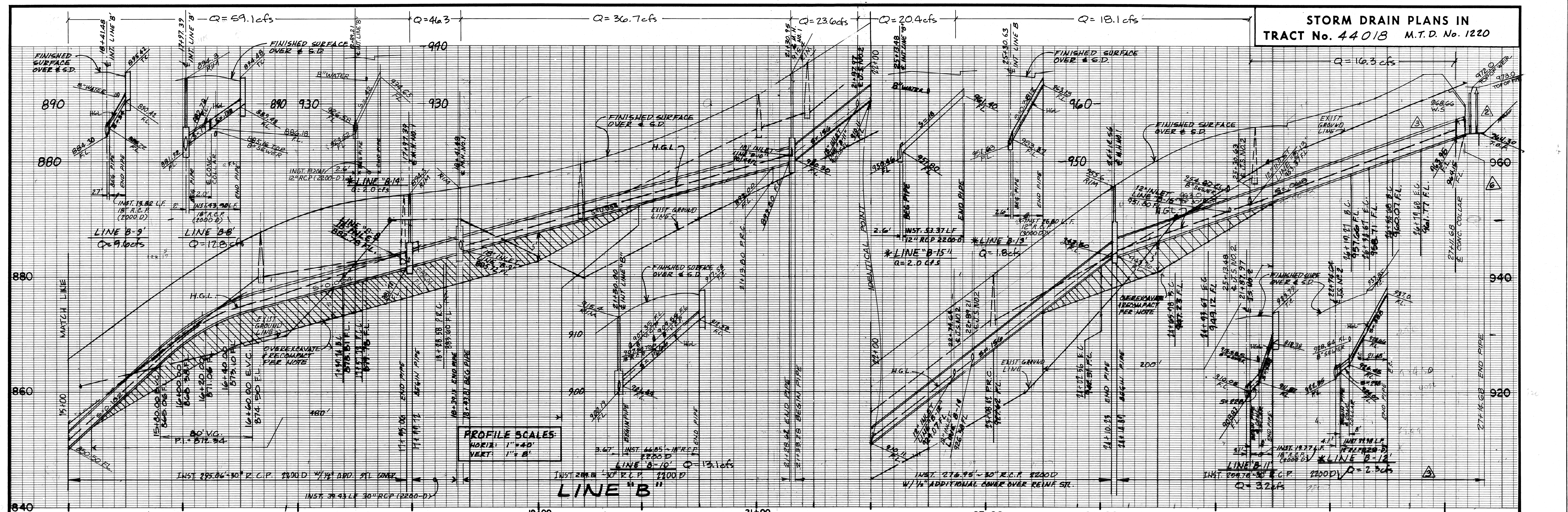
Ronald L. Kranzer 11-2-87
RONALD L. KRANZER, RCE 18503 DATE

PLANS PREPARED BY:
Hunsaker & Associates Inc.
Planning, Engineering & Surveying
(714) 583-1010
THREE HUGHES IRVINE, CA. 92718



M.T.D. 1220
CITY OF WALNUT
STORM DRAIN IMPROVEMENTS
LINE "B"
STA. 2+58 TO 15+00

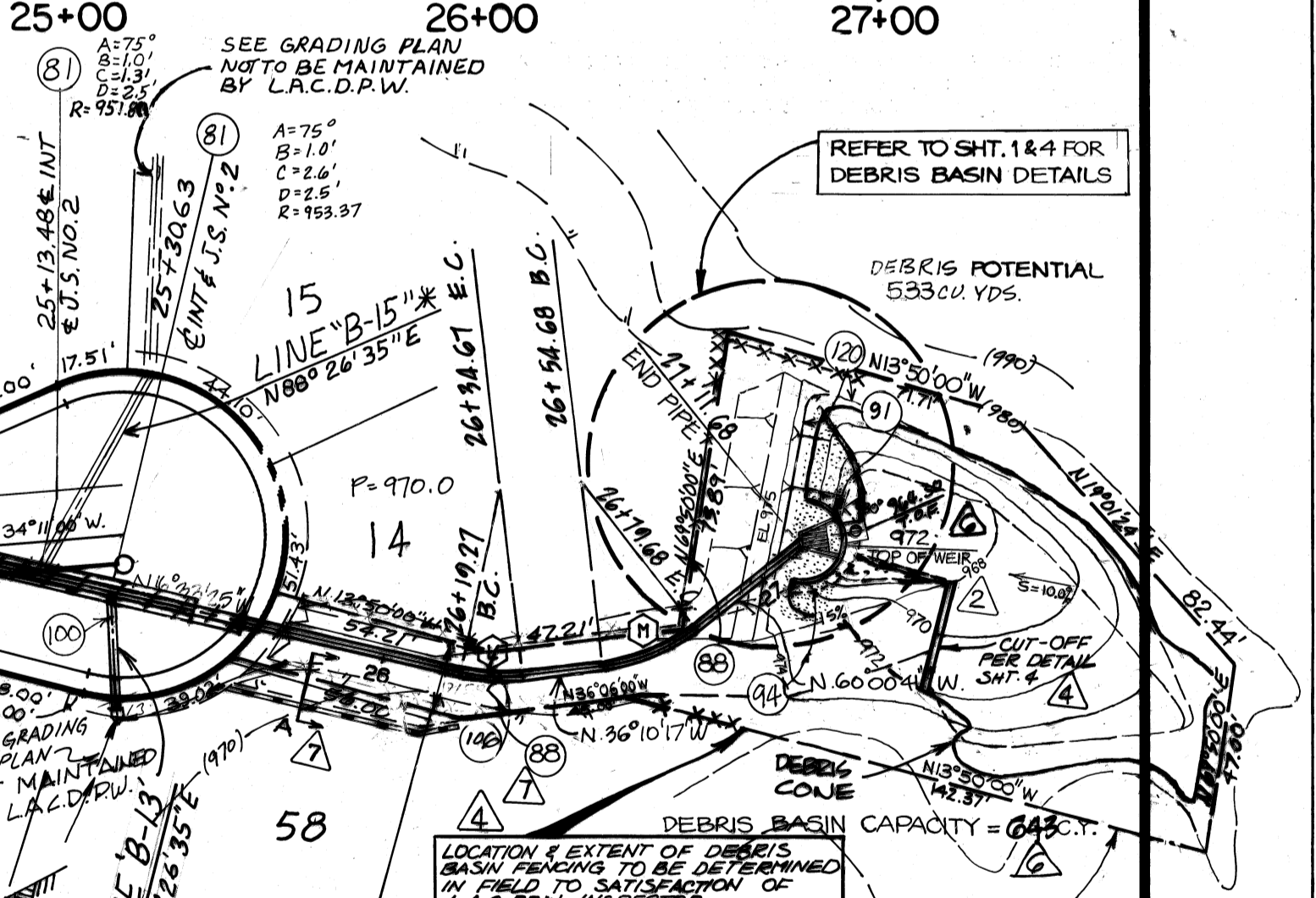
NO.	REVISION	REVISED BY	APPROVED BY	DATE
1	CHANGE SLOPE OF LINES "B-1a" & "B-2"	<i>John Thompson</i>	<i>Jack Lott</i>	9/21/87
2	ENS. 42" R.C.P. TO REMAIN IN OPERATIONAL PLUG & ABANDON LATERAL	<i>John Thompson</i>	<i>Jack Lott</i>	9/21/87



PROFILE SCALES:
HORIZ: 1" = 40'
VERT: 1" = 8'

CURVE DATA				CURVE DATA				CURVE DATA			
DELTA	RADIUS	LENGTH	TANGENT	DELTA	RADIUS	LENGTH	TANGENT	DELTA	RADIUS	LENGTH	TANGENT
(A) 05° 15' 25"	196.00	17.98	9.00	(H) 15° 23' 25"	318.00	318.00	85.42	(P) 3° 27' 43"	318.00	19.22	9.61
(B) 50° 30' 11"	45.00	39.67	21.22	(I) 06° 18' 44"	318.00	35.03	17.53				
(C) 39° 42' 50"	45.00	31.19	16.25	(J) 13° 25' 00"	402.00	94.13	47.28				
(D) 02° 37' 27"	204.00	12.90	6.45	(K) 17° 37' 35"	90.00	27.69	13.95				
(E) 75° 27' 19"	204.00	268.66	157.83	(L) 19° 36' 52"	45.00	15.41	7.78				
(F) 01° 01' 41"	204.00	3.66	1.83	(M) 31° 50' 24"	45.00	25.01	12.84				
(G) 13° 21' 51"	318.00	74.17	37.26	(N) 54° 42' 16"	22.50	21.48	11.64				

* NOT MAINTAINED BY L.A.C.D.P.W.
(LINES "B-12", "B-13", "B-14", "B-15")



STORM DRAIN CONST. NOTES

- (80) --- CONST. M. H. NO. 1 PER L.A.C.F.C.D. STD. 2-D102
- (81) --- CONST. J. S. NO. 2 PER L.A.C.F.C.D. STD. 2-D112
- (82) --- CONST. C. B. NO. 1 PER L.A.C.F.C.D. STD. 2-D180
- (83) --- CONST. C. B. NO. 2 PER L.A.C.F.C.D. STD. 2-D182
- (84) --- CONST. C. B. NO. 3 PER L.A.C.F.C.D. STD. 2-D183
- (85) --- CONST. 5' FENCE AND 16' DOUBLE DRIVE GATE PER L.A.C.F.C.D. 2-D179
- (86) --- CONST. CONC. COLLAR PER L.A.C.F.C.D. STD. 2-D393
- (87) --- CONST. TRASH RACK PER L.A.C.F.C.D. STD. 2-DTR1.1
- (88) --- CONST. DEBRIS WALL & INLET (SEE SHT. 1)
- (89) --- INST. 12" RCP OR ACP (SEE PROFILE FOR D-LOAD)
- (90) --- INST. 18" RCP (SEE PROFILE FOR D-LOAD)
- (91) --- INST. 30" RCP (SEE PROFILE FOR D-LOAD)
- (92) --- CONST. ACCESS ROAD PER DETAIL ON SHT. 1
- (93) --- CONST. CONC. FACING (TOP OF FACING TO BE 2.5' ABOVE TOP OF WEIR) PER DETAIL ON SHT. 4
- (94) --- OVEREXCAVATE & RECOMPACT @ 90%

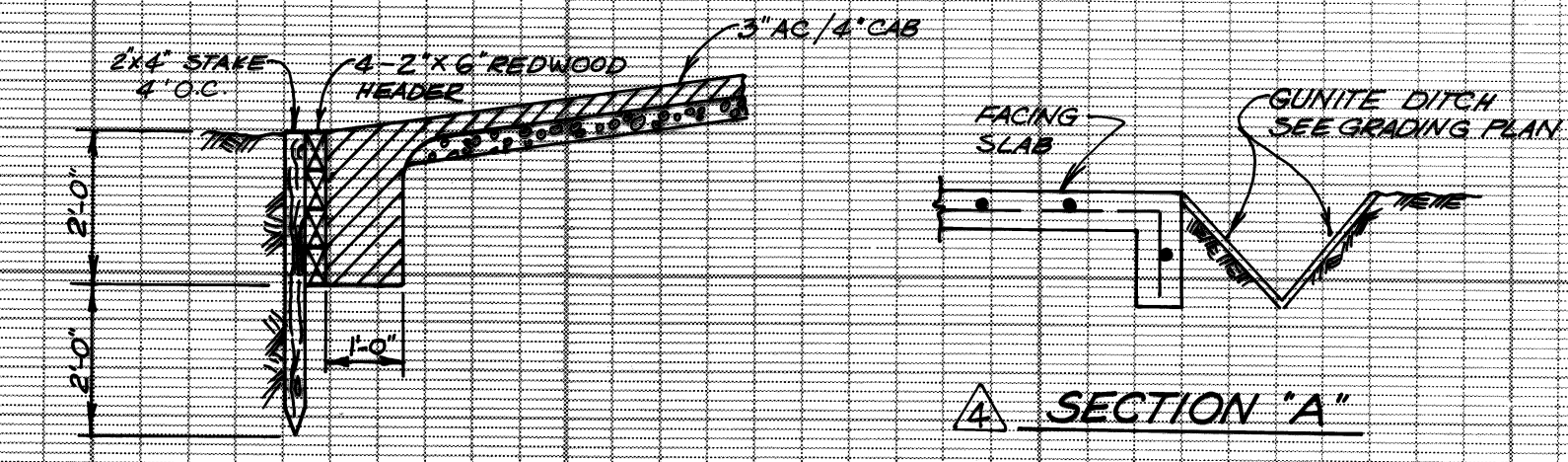
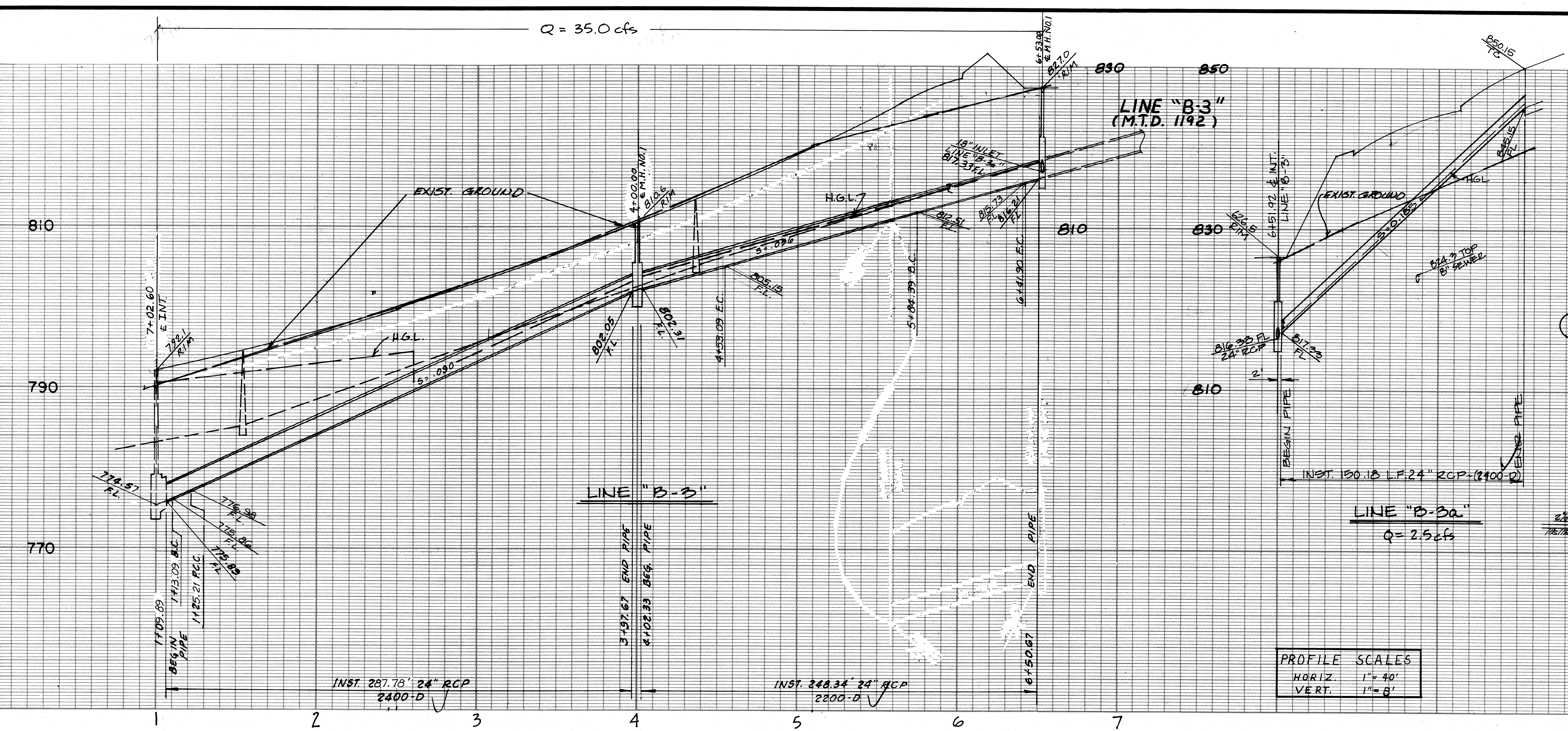
CITY OF WALNUT - APPROVED
CITY ENGINEER
Ronald L. Kranzer
RONALD L. KRANZER RCE 18503 DATE



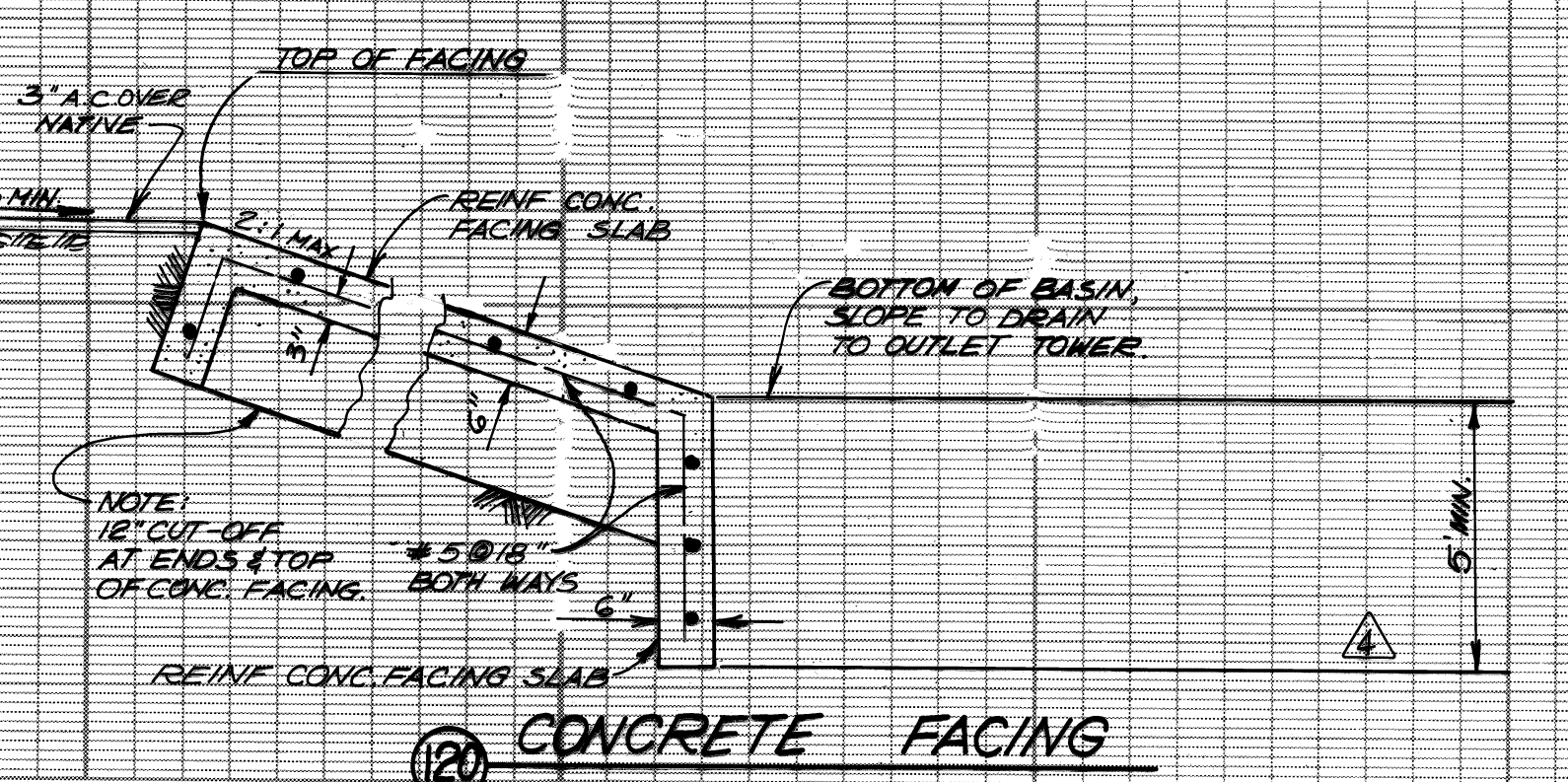
M.T.D. 1220
CITY OF WALNUT
STORM DRAIN IMPROVEMENTS
LINE "B"
STA. 15+00 TO 27+12
TR. 44018 STORM DRAIN IMPROVEMENTS SHT 3 OF 4 SHTS

NO.	REVISION	REVISED BY	APPROVED BY	DATE
1	CHANGED WALL & INLET DETAIL	Steve Barnhart	Jack Latta	9/24/08
2	ADD DEBRIS BASIN DETAIL	RCE 25167 9-28-08	Jack Latta	9/24/08
3	EXTENDED LINE "B" 3'	Steve Barnhart	Jack Latta	9/24/08
4	REV. PIPE PROFILED INLET LINE "B"	Steve Barnhart	Jack Latta	9/24/08
5	REV. LOCATION OF FACING SLAB	RCE 25167 25/11	Jack Latta	9/24/08
6	CAPACITY OF DEBRIS BASIN	Steve Barnhart	Jack Latta	9/24/08
7	ADDED EASEMENT FOR FLOOD CONTROL	Steve Barnhart	Jack Latta	9/24/08
8	ACCESS RD. MOVED OVER	Steve Barnhart	Jack Latta	9/24/08

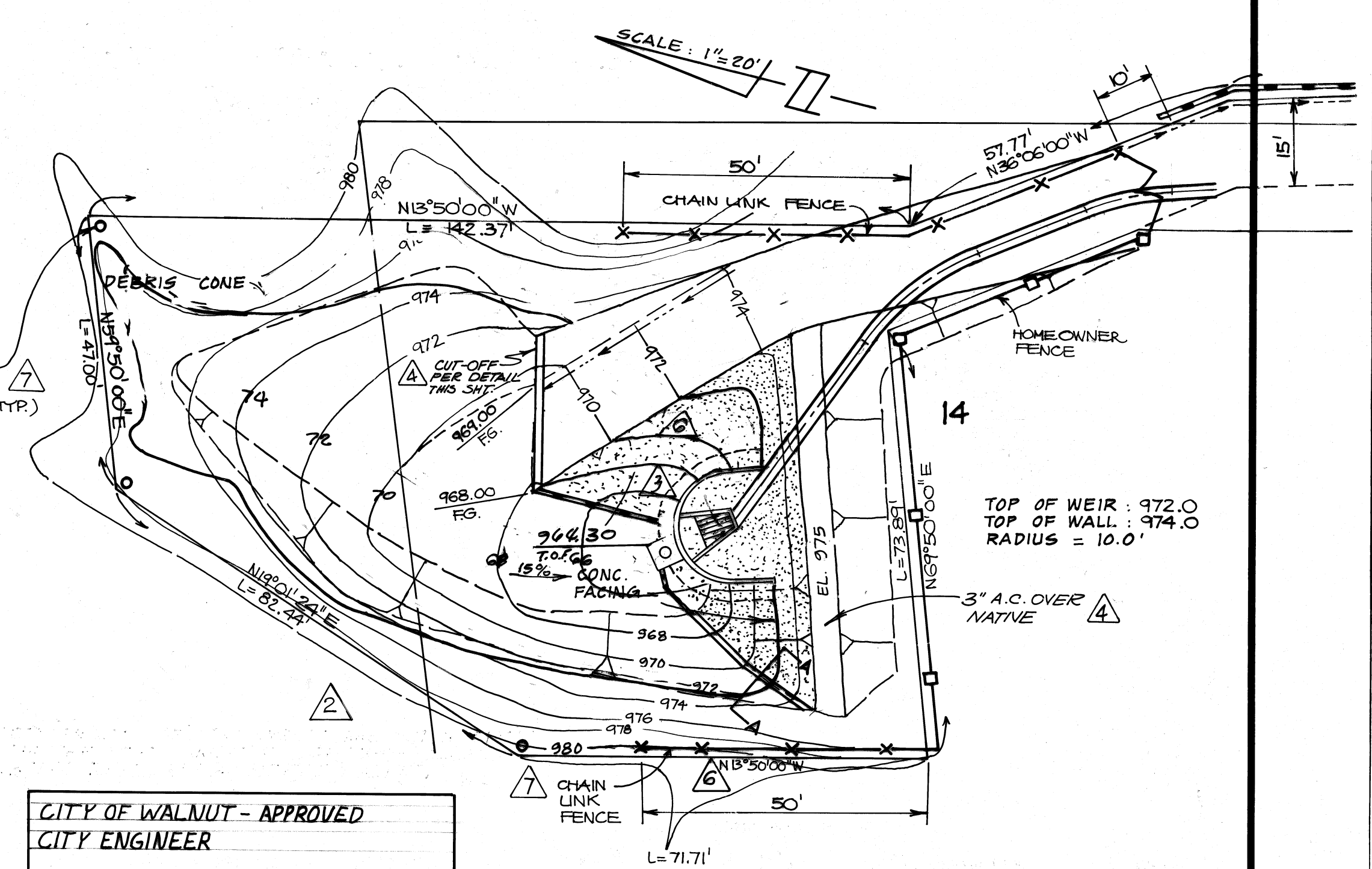
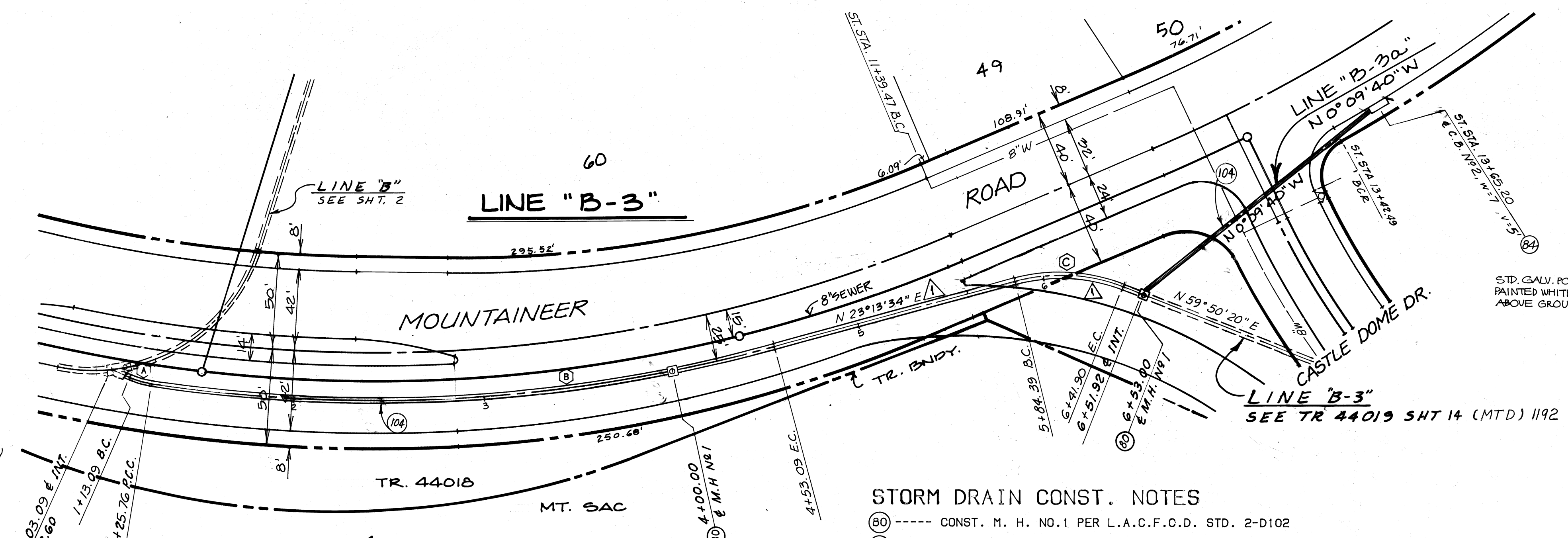
STORM DRAIN PLANS IN
TRACT No. 44018 M.T.D. No. 1220



ACCESS ROAD CUT-OFF DETAIL
N.T.S.



PROFILE SCALES
HORIZ. 1" = 40'
VERT. 1" = 8'



NO.	REVISION	REVISED BY	APPROVED BY	DATE
1	CHANGE CURVE DATA, BEARING LINE "B-3"	Jack Lott	Jack Lott	9/21/88
2	ADD DEBRIS BASIN DETAIL	Jack Lott	Jack Lott	9/21/88
3	CHANGE LOC. OF DARRIS WALL	Jack Lott	Jack Lott	9/21/88
4	REVISED FACING CUT-OFF DETAIL	Jack Lott	Jack Lott	9/21/88
5	SHOWED FENCE & ACCESS RD. GRADING	Jack Lott	Jack Lott	9/21/88

DELTA	RADIUS	LENGTH	TANGENT
15° 25' 57"	45.00	12.12	6.10
23° 37' 49"	795.00	327.88'	166.30'
36° 36' 46"	90.00	57.51'	29.78'

- STORM DRAIN CONST. NOTES
- (80) ---- CONST. M. H. NO.1 PER L.A.C.F.C.D. STD. 2-D102
 - (81) ---- CONST. J. S. NO.2 PER L.A.C.F.C.D. STD. 2-D112
 - (83) ---- CONST. C. B. NO.1 PER L.A.C.F.C.D. STD. 2-D160
 - (84) ---- CONST. C. B. NO.2 PER L.A.C.F.C.D. STD. 2-D162
 - (89) ---- CONST. CONC. COLLAR PER L.A.C.F.C.D. STD. 2-D399
 - (102) ---- INST. 18" RCP (SEE PROFILE FOR D-LOAD)
 - (104) ---- INST. 24" RCP (SEE PROFILE FOR D-LOAD)



CITY OF WALNUT - APPROVED
CITY ENGINEER
Ronald L. Kranizer 11-9-87
RONALD L. KRANIZER, RCE 18503 DATE
PLANS PREPARED BY:
Hunsaker Associates Inc.
Planning, Engineering & Surveying
(714) 583-1010
THREE HUGHES - IRVINE, CA. 92718

MTD. 1220
CITY OF WALNUT
STORM DRAIN IMPROVEMENTS
LINE "B-3"
STA. 1+00 TO 6+55