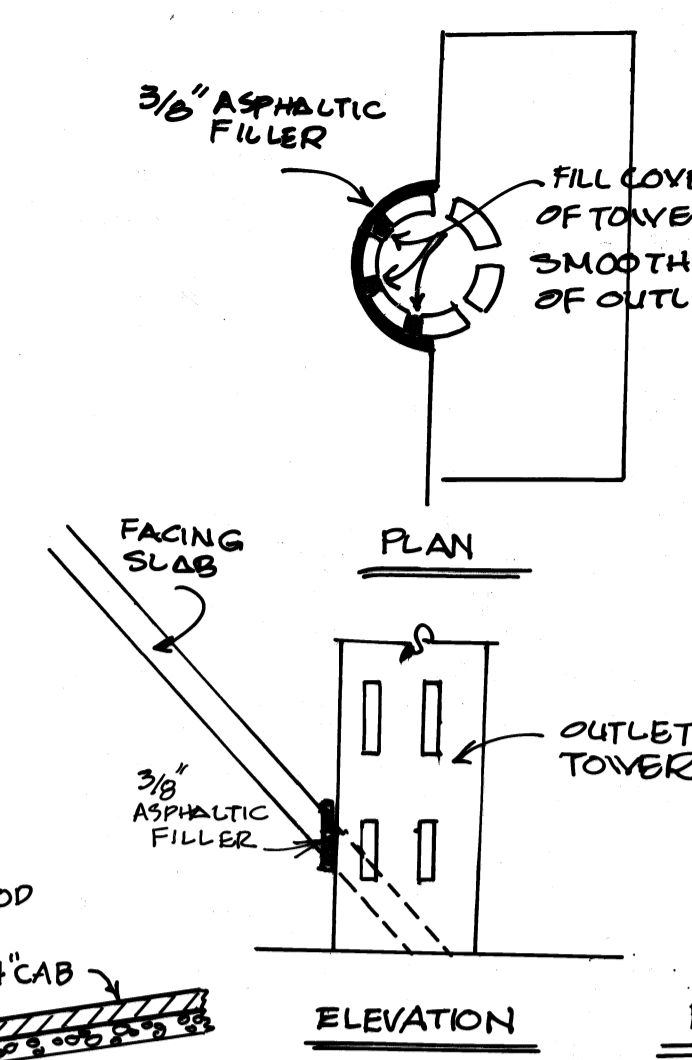
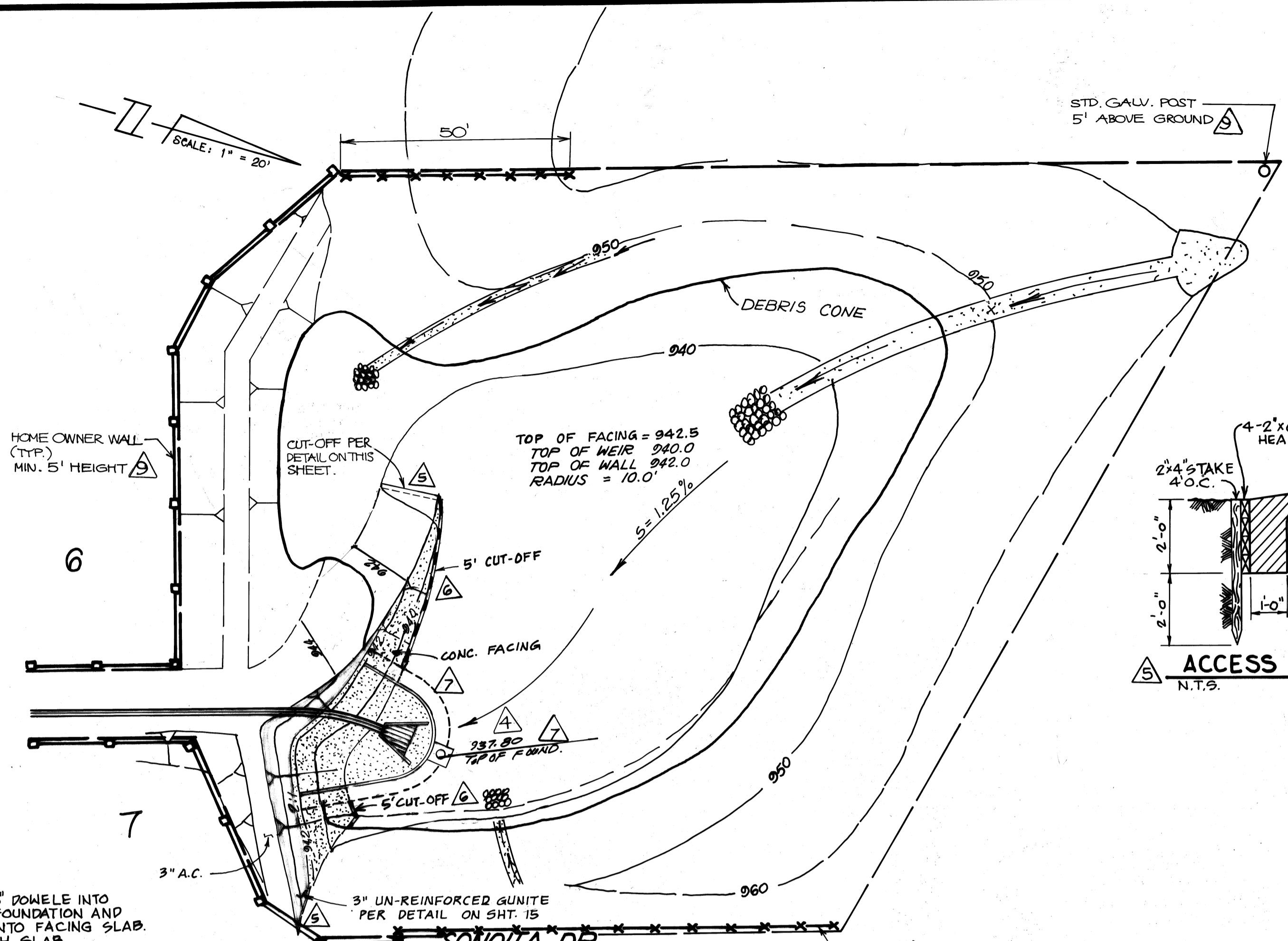
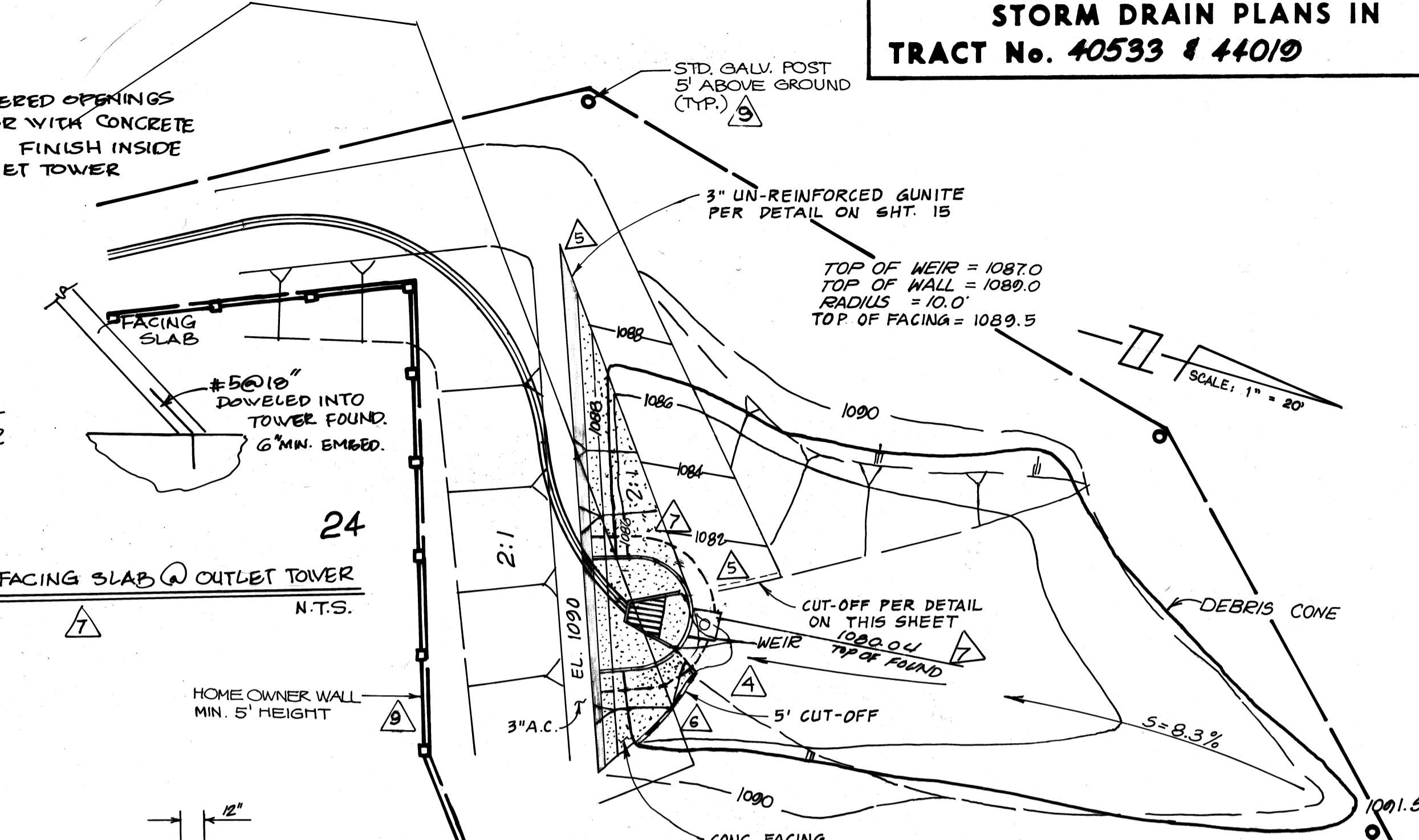




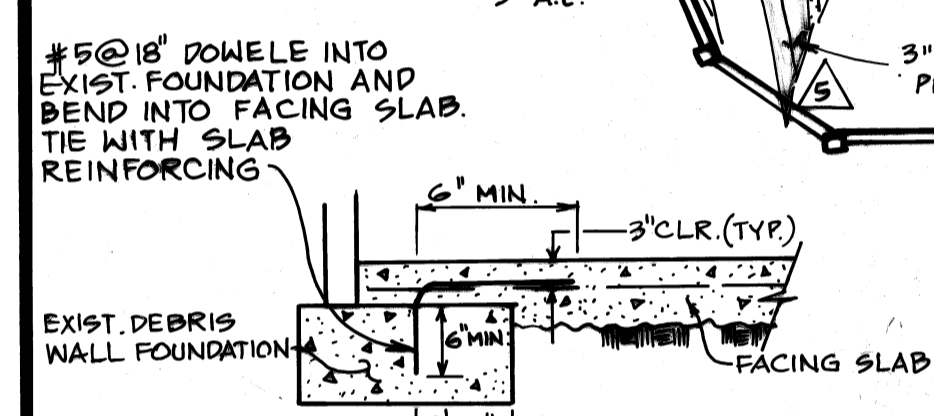
**STORM DRAIN PLANS IN  
TRACT No. 40533 & 44010**



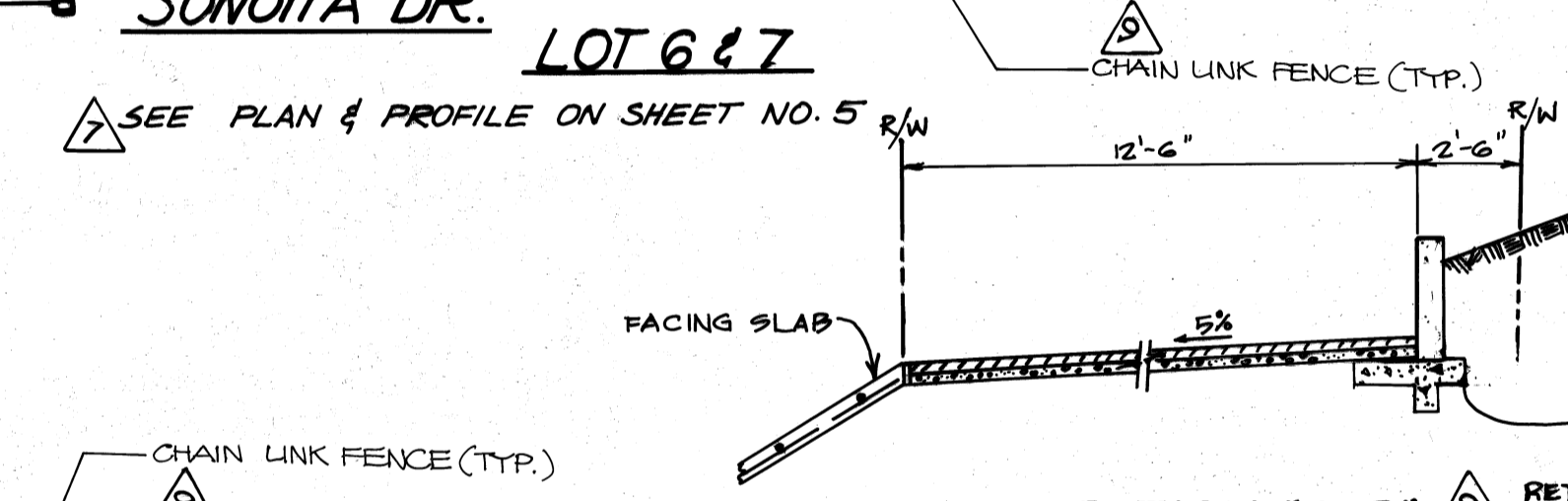
**ACCESS ROAD CUT-OFF DETAIL**  
N.T.S.



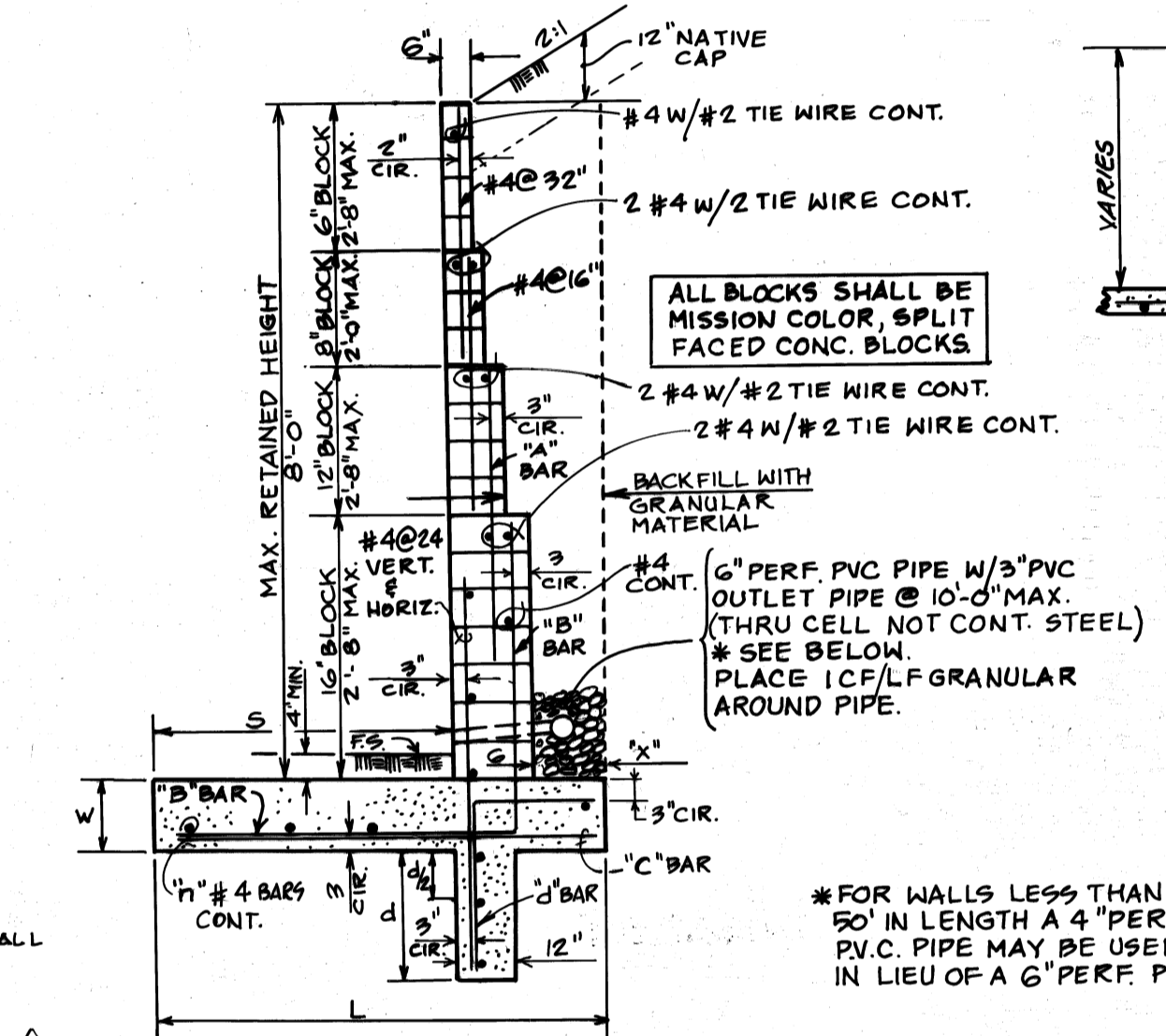
**GRANITE WELLS DR. LOT 24**  
SEE PLAN & PROFILE ON SHEET NO. 4



**SECTION "C-C"**  
THIS DETAIL SUPERCEDES TYPICAL DETAIL SECTION B-B ON SHT. 2 FOR THE AREA SHOWN ONLY.

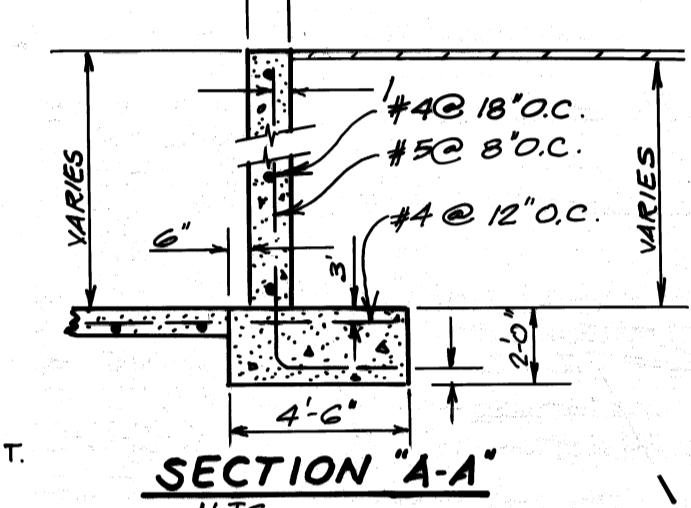


**SECTION "B-B"**  
RETAINING WALL  
N.T.S.

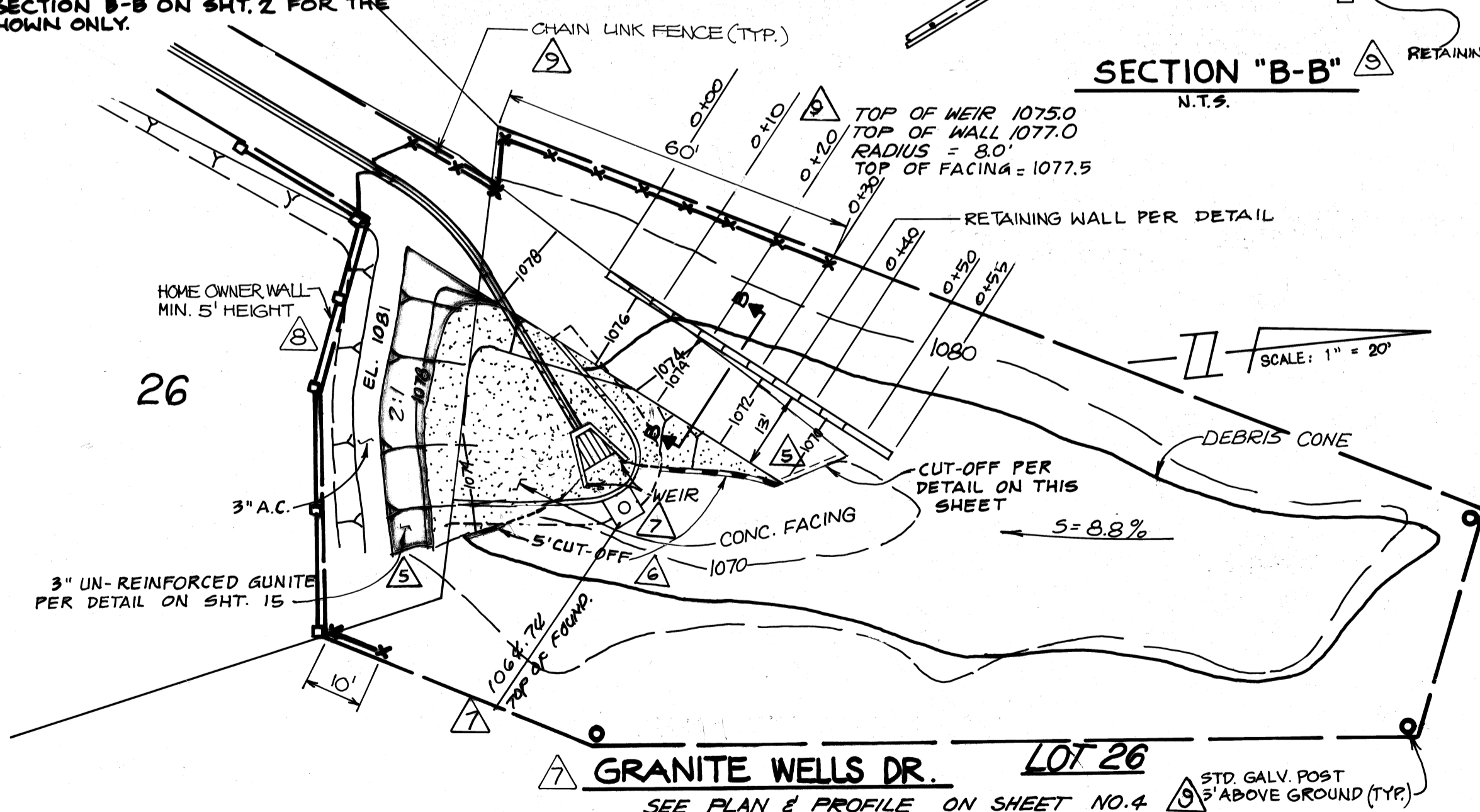


**RETAINING WALL DETAIL**  
NO SCALE

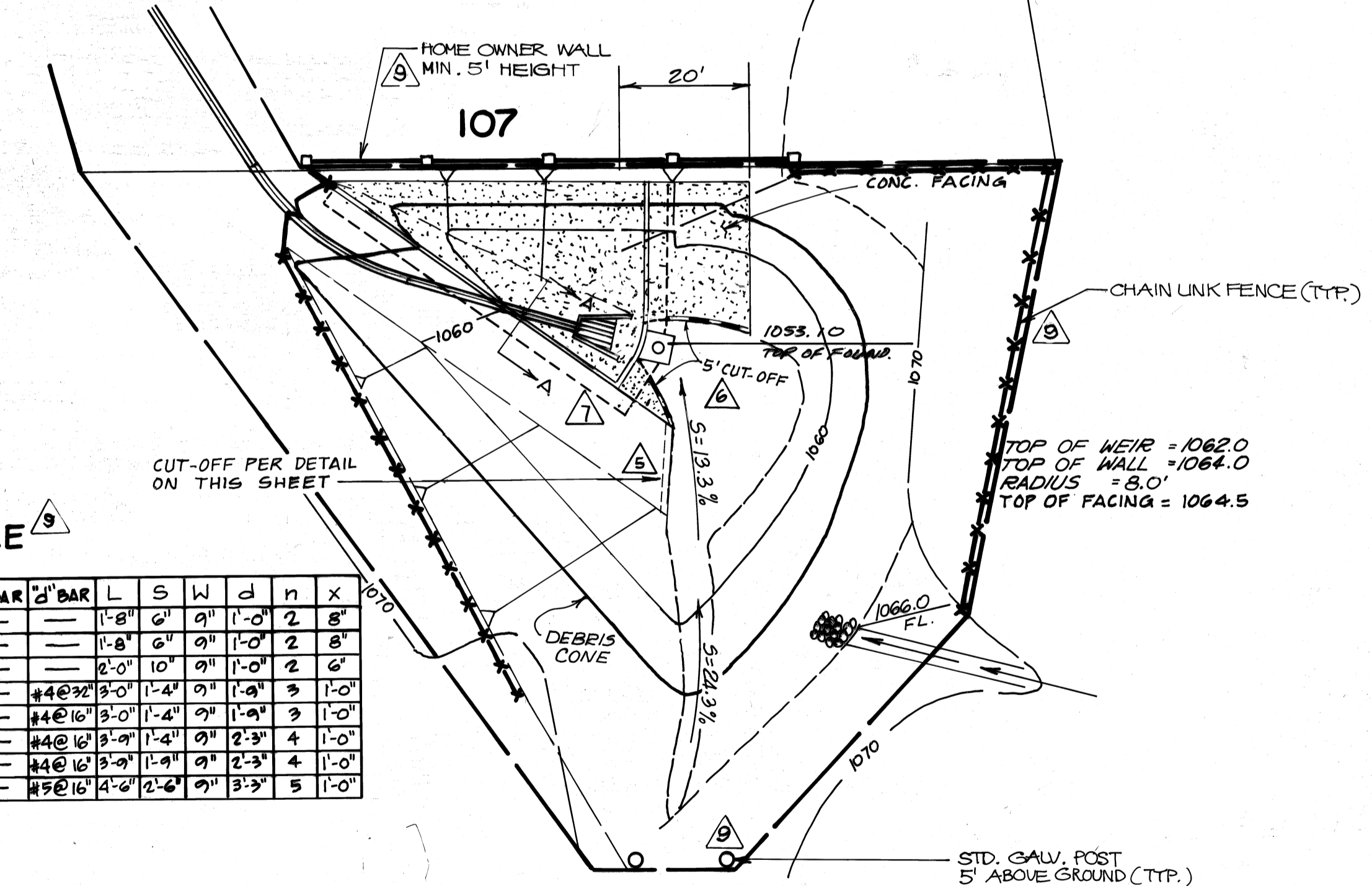
REINF. STEEL: DEFORMED BILLET STEEL BARS, GRADE 40 PER ASTM A-618  
CONC. STRENGTH: PORTLAND CEMENT PER ASTM C-150  
F.C. = 3250 P.S.I. @ 28 DAYS  
ALL CONC. STRUCTURES CONTACTING ON-SITE SOILS SHALL BE TYPE "S" SULFATE RESISTANT CEMENT



**SECTION "A-A"**  
N.T.S.



**GRANITE WELLS DR. LOT 26**  
SEE PLAN & PROFILE ON SHEET NO. 4



**FORT BOWIE DR. LOT 107**  
SEE PLAN & PROFILE ON SHEET NO. 8

**WALL SCHEDULE**

HEIGHT	OP WALL	CONC. BLOCK	REINFT. CONST.	A' BAR	B' BAR	C' BAR	D' BAR	L	S	W	d	n	x
2'-0"	2'-0"	8"	---	---	---	---	---	1'-8"	6"	9"	1'-0"	2	8"
2'-8"	2'-8"	8"	---	---	---	---	---	1'-8"	6"	9"	1'-0"	2	8"
3'-4"	2'-0"	1'-4"	---	---	---	---	---	2'-0"	10"	9"	1'-0"	2	6"
4'-0"	2'-0"	2'-0"	---	---	---	---	---	4-4@92"	3'-0"	1'-4"	9"	1'-0"	3
4'-8"	2'-8"	2'-0"	---	---	---	---	---	4-4@16"	3'-0"	1'-4"	9"	1'-0"	3
5'-4"	2'-8"	1'-4"	---	4-4@16"	---	---	---	4-4@16"	3'-9"	1'-4"	9"	2'-3"	4
6'-0"	2'-8"	2'-0"	---	4-4@16"	---	---	---	4-4@16"	3'-9"	1'-4"	9"	2'-3"	4
6'-8"	2'-8"	2'-0"	---	4-4@16"	---	---	---	4-4@16"	4'-0"	2'-0"	9"	3'-3"	5

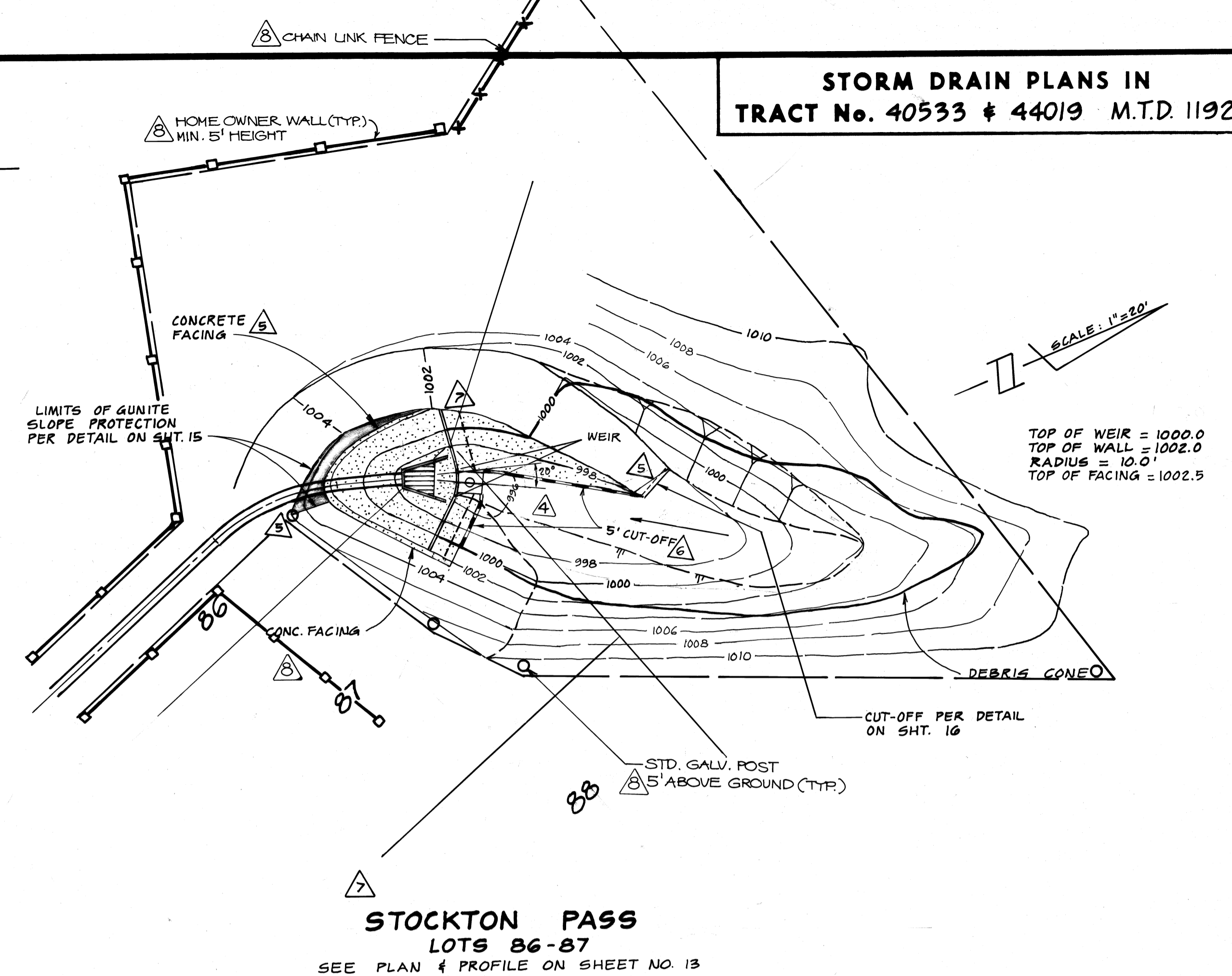
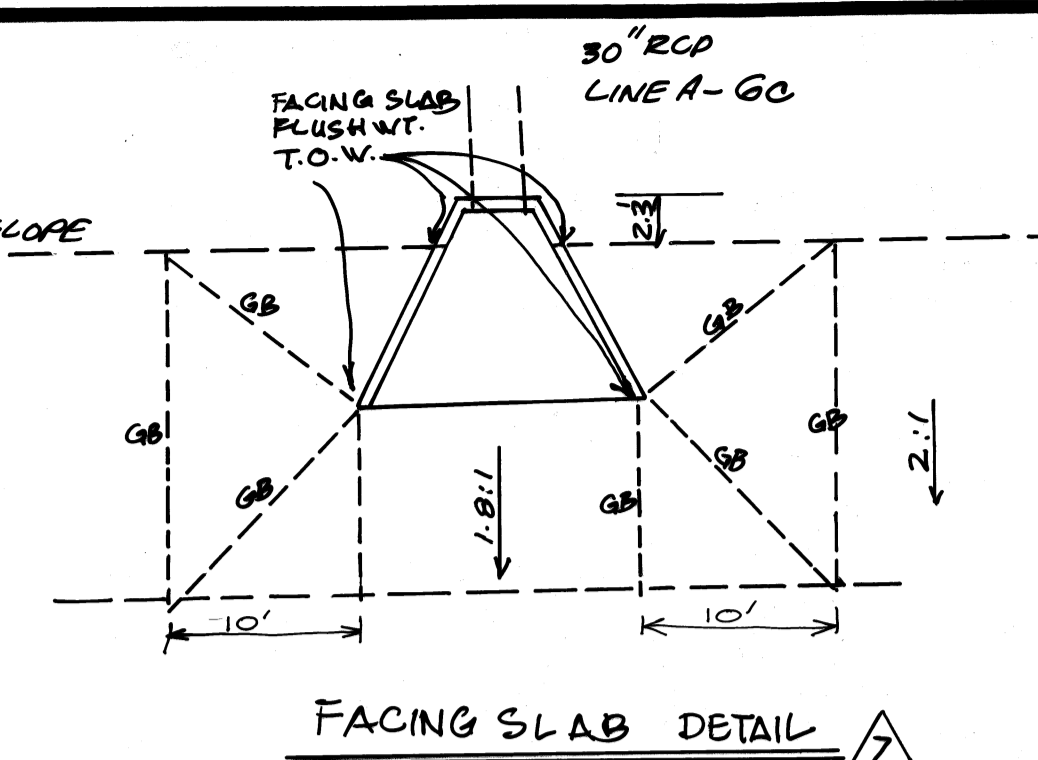
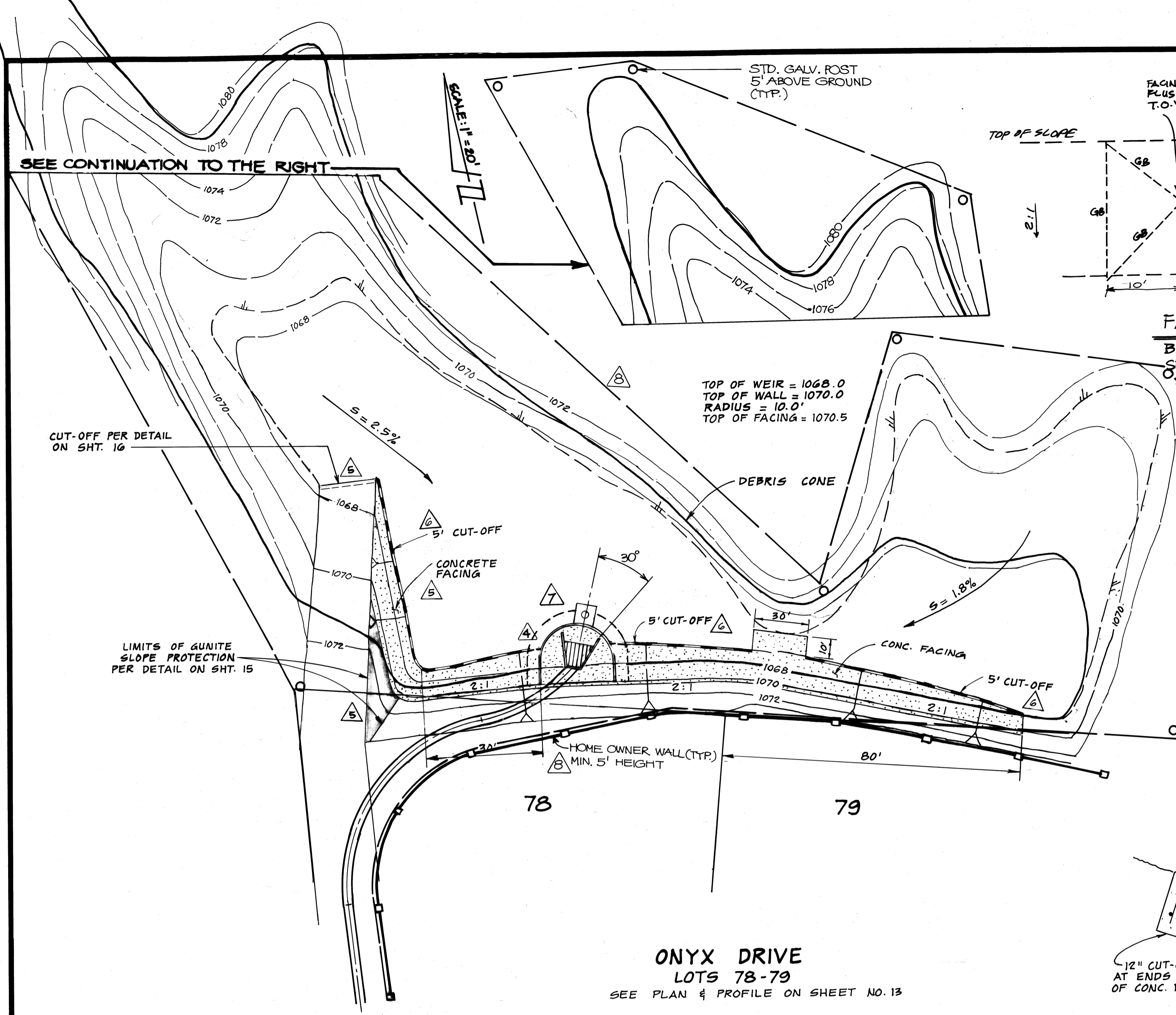
NO.	REVISION	REVISED BY	APPROVED BY	DATE	NO.	REVISION	REVISED BY	APPROVED BY	DATE
1	ADDED THIS SHEET	ACE 2/1/88	Jack L. Smith	10/1/88	1	ADDED 5' CUT-OFF	ACE 2/1/88	Jack L. Smith	10/1/88
2	REVISED DETAIL (SEE SHTS)	ACE 2/1/88	Jack L. Smith	10/1/88	2	SHOWED DEBRIS WALL FOUND STOPPED CUT-OFF @ FOUND. ALL DET. L-21-88	ACE 2/1/88	Jack L. Smith	10/1/88
3	ROTATED INLET STRUCT. 30° IN LOT 24	ACE 2/1/88	Jack L. Smith	10/1/88	3	ADDED FACING SLAB @ OUTLET TOWER DETAIL	ACE 2/1/88	Jack L. Smith	10/1/88
4	ADDED ACCESS ROAD CUT-OFF & TOP OF CONC. FACING DETAILS	ACE 2/1/88	Jack L. Smith	10/1/88	4	ADDED FENCE LOCATION. ADD RETAINING WALL GRANITE WELLS. SHOWED AS BUILT	ACE 2/1/88	Jack L. Smith	10/1/88

**CITY OF WALNUT - APPROVED**  
CITY ENGINEER  
*Jack L. Smith* 10/13/88  
JACK G. ISTIK, R.C.E. 26,558  
ASSISTANT CITY ENGINEER

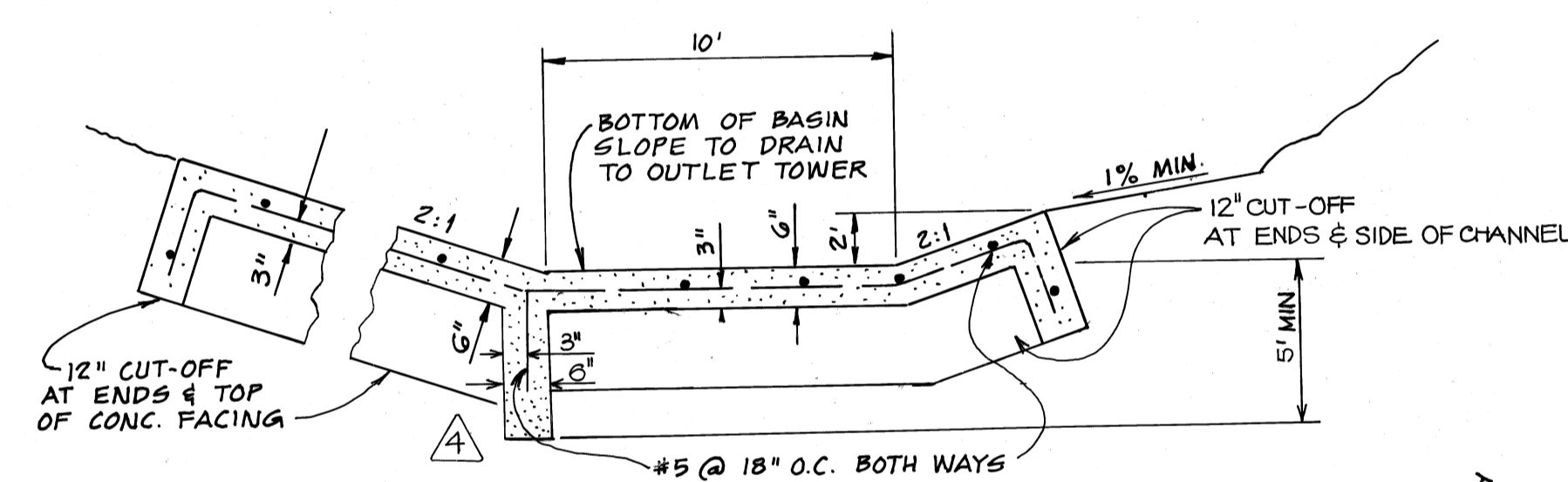


PLANS PREPARED BY:  
*Steve Barnhart* 6-6-88  
No. 25187  
Exp. 12/31/89  
BARNHART RCE 25187  
Barnhart & Associates, Inc.  
Planning • Engineering • Surveying  
Three Hughes • Irvine, California 92718 • (714) 855-3600

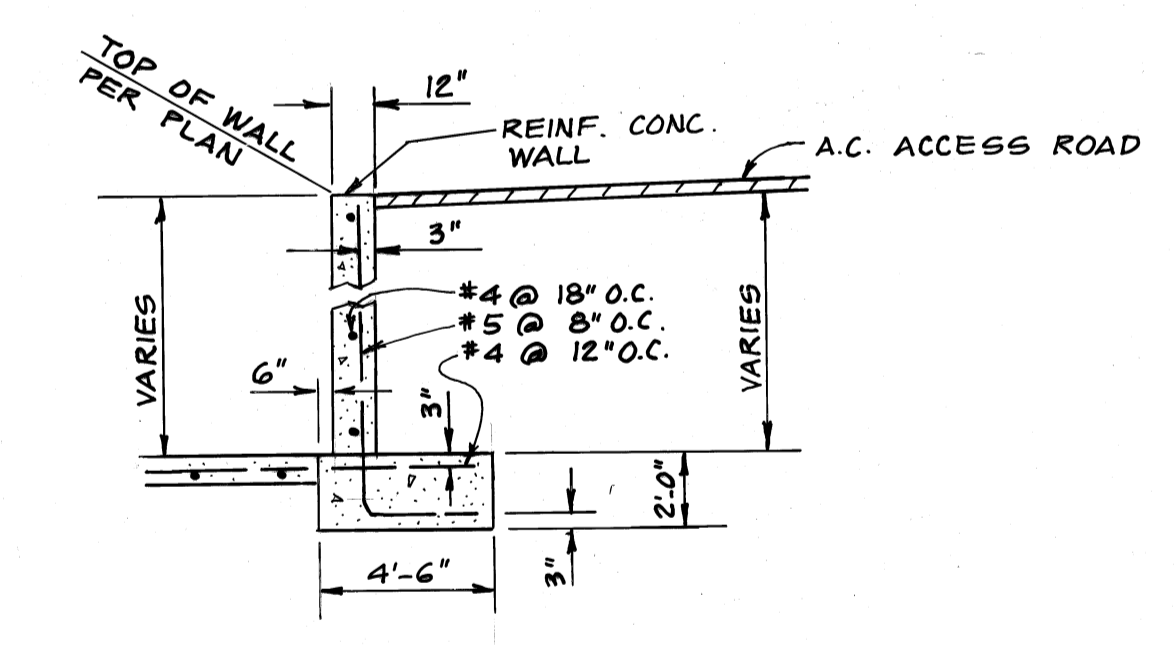
M.T.D. 1192  
CITY OF WALNUT  
**STORM DRAIN IMPROVEMENT**  
**DEBRIS BASIN**  
**DETAIL SHEET**  
TR. 40533 AND 44010 AND STORM DRAIN IMPROVEMENTS SHT 16 of 17 SHTS



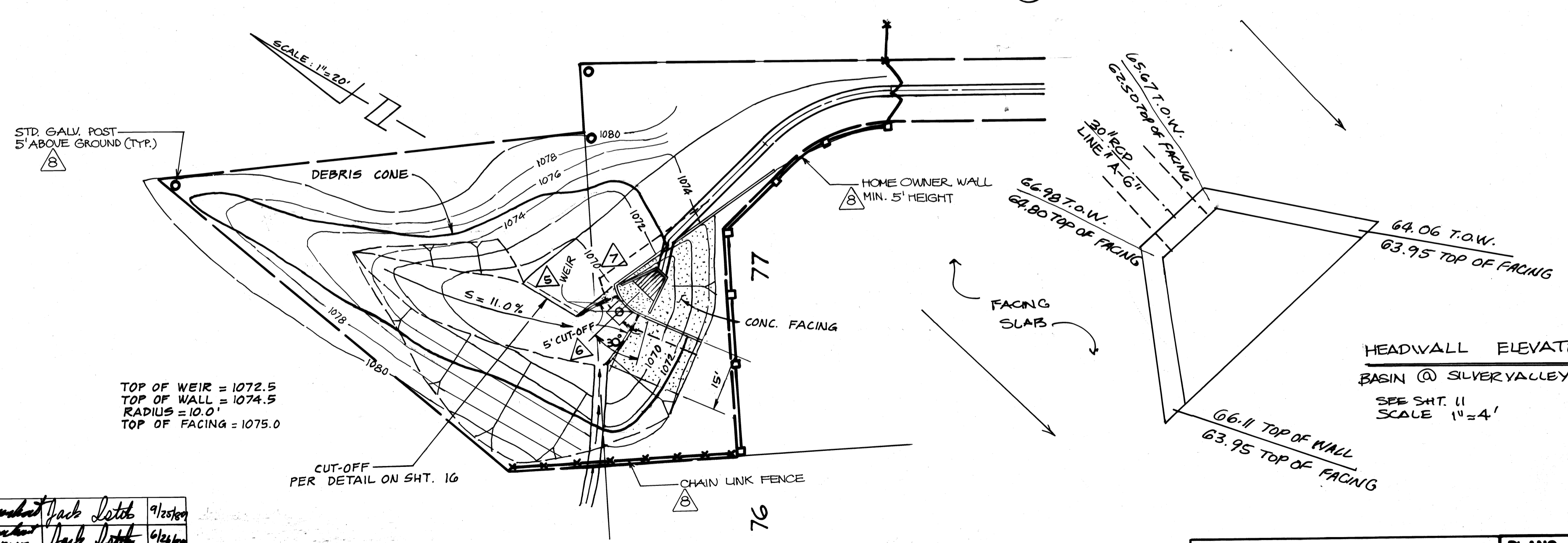
ONYX DRIVE  
LOTS 78-79  
SEE PLAN & PROFILE ON SHEET NO. 13



124 CONCRETE CHANNEL DETAIL  
N.T.S.



SECTION A-A  
N.T.S.



ONYX DRIVE  
LOT 77  
SEE PLAN & PROFILE ON SHEET NO. 13

HEADWALL ELEVATIONS  
BASIN @ SILVER VALLEY  
SEE SHT. 11  
SCALE 1"=4'



NO.	REVISION	REVISED BY	APPROVED BY	DATE
7	SHOWN DEBRIS WALL FOUND. & TOP OF CUT-OFF CHANGED. FOUND 2 INLET DETAILS	Jack Satal	Jack Satal	6/26/89
	ADDED THIS SHEET	Jack Satal	Jack Satal	10/21/88
	ROTATED INLET STRUCT. 30° IN LOT 78-79 BASIN @ 20' IN LOT 86-87	Jack Satal	Jack Satal	11/1/88
	REVISED CONC. CHANNEL DETAIL	Jack Satal	Jack Satal	11/1/88
	REVISED TOP OF CONC. FACING	Jack Satal	Jack Satal	3/1/89
	ADDED ACCESS RD. CUT-OFF	Jack Satal	Jack Satal	5/3/89
	ADDED 5' CUT-OFF	Jack Satal	Jack Satal	5/3/89

CITY OF WALNUT-APPROVED  
CITY ENGINEER  
Jack Satal 10/13/88  
JACK G. ISTIK, R.C.E. 26558 DATE  
ASSISTANT CITY ENGINEER

PLANS PREPARED BY:  
Hummel & Associates, Inc.  
Planning • Engineering • Surveying  
Three Hughes • Irvine, California 92718 • (714) 855-3600

M.T.D. 1192
CITY OF WALNUT
STORM DRAIN IMPROVEMENTS
DEBRIS BASIN DETAIL SHEET
TR. 40533 AND 44019
STORM DRAIN IMPROVEMENTS
SHT 17 of 17 SHTS